



ENGLISH

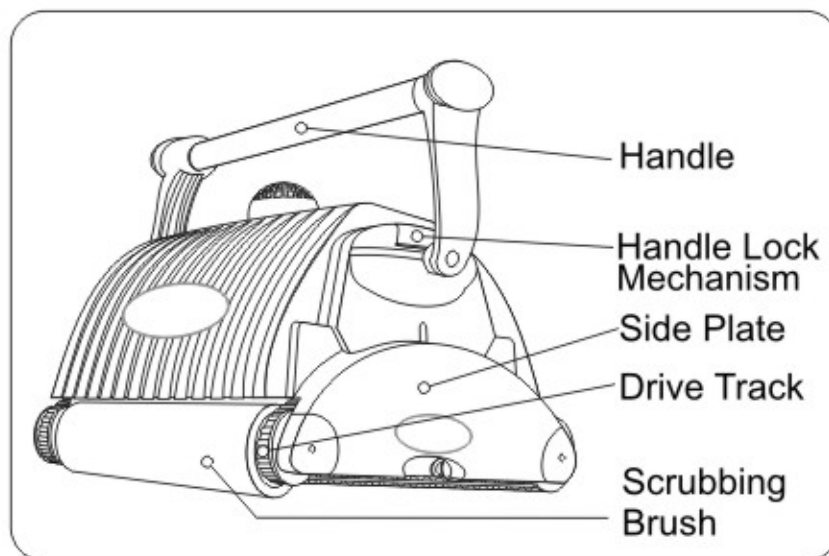
Dear Customer,
Thank you for choosing the Blue Diamond to clean your pool. We hope that you will enjoy using your new Blue Diamond to maintain your swimming pool for years to come.
Before you begin to use your Blue Diamond, please take a few minutes to carefully read these operating instructions.
Again, thank you for choosing the Blue Diamond.

IMPORTANT

1. CAUTION: DO not switch the pool cleaner "ON" if it is not fully immersed in water. Operating the cleaner out of water will cause severe damage immediately and will result in loss of warranty.

2. Allow the cleaner to remain in the pool for 5 to 10 minutes following the end of its cleaning cycle. This will allow the motors to cool adequately. Do not leave the cleaner in the pool all the time. Always remember to turn the power supply "OFF" and unplug it from the power outlet before removing the cleaner from the pool.

WARNING: Your Cleaner should not be used while people are swimming in the pool.



Operating the Blue Diamond Pool Cleaner

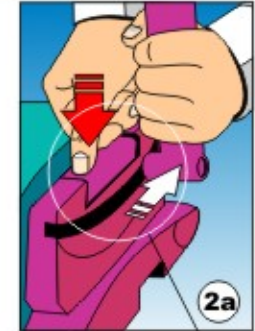
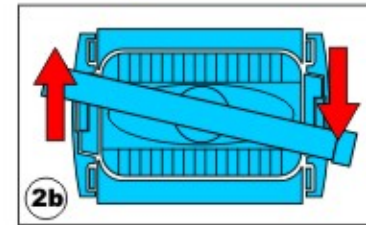
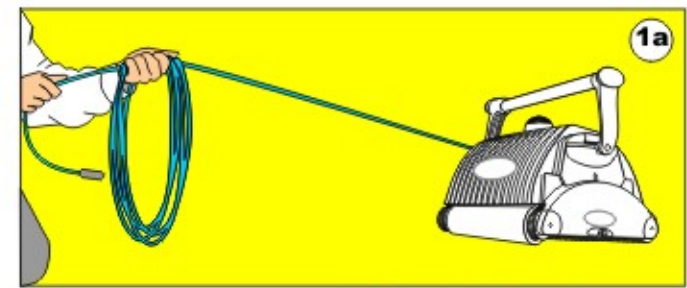
Your new automatic pool cleaner contains:

- A.** The robotic pool cleaner with its floating cable.
- B.** The Power Supply (transformer).
- C.** Caddy - cart.

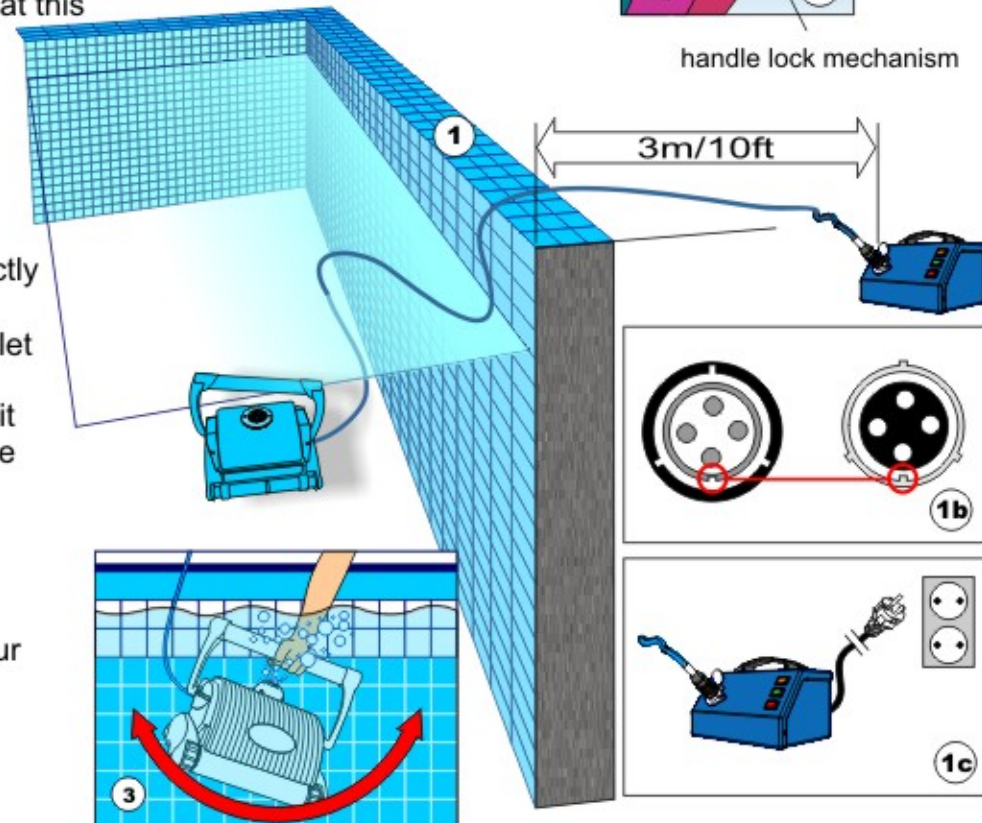
Please read this manual completely before operating your pool cleaner.

- 1.** Place the power supply (transformer) at least three meters/ ten feet from the pool.(fig.1). The transformer will supply low voltage to the cleaner.
- 2.** Uncoil the cable.(fig. 1a)
- 3.** For proper operation, lock the moveable handle diagonally across the top of the cleaner's body. Push down on the handle lock mechanism and slide the handle all the way to the end (recommended one slot before the end), then release the lock. The handle will remain fixed in this position. Repeat this process on the other side of the cleaner. Remember, the handle must be fixed diagonally (fig.2a, 2b)
- 4.** Place the unit in the water. Turn the unit side to side in the water to allow air to escape from the body and then let the cleaner sink to the bottom of the pool (fig.3). Then, spread the cable over the surface of the pool as evenly as possible (fig.1).
- 5.** Plug the cable into the power supply. Make sure the key on the plug exactly corresponds with the key slot on the socket of the power supply (fig.1b). Plug the power supply into a grounded outlet. Ensure that the electric outlet has been properly grounded (fig.1c).The light will glow indicating that the system is " ON " and the pool cleaner will start the cleaning cycle. The unit keeps record of the number of cleaning cycles. Only an authorized service center can display the accumulated cleaning cycles. (See details on the next page)

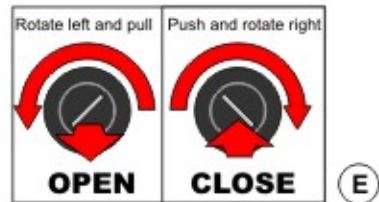
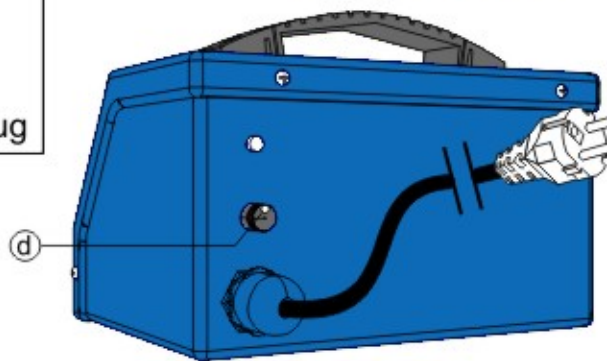
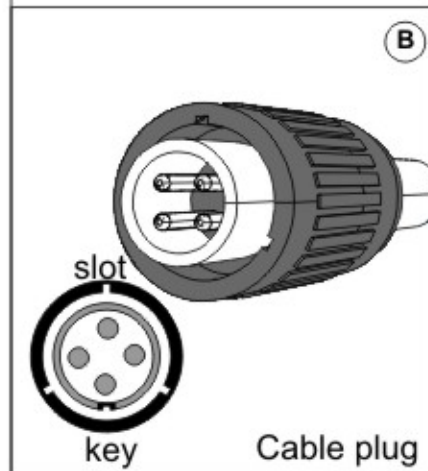
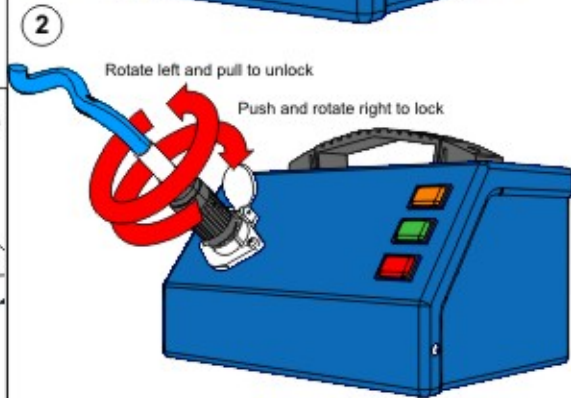
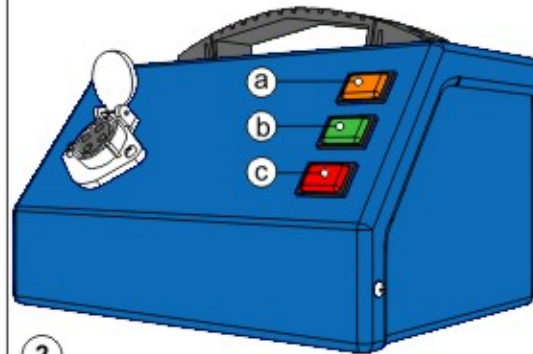
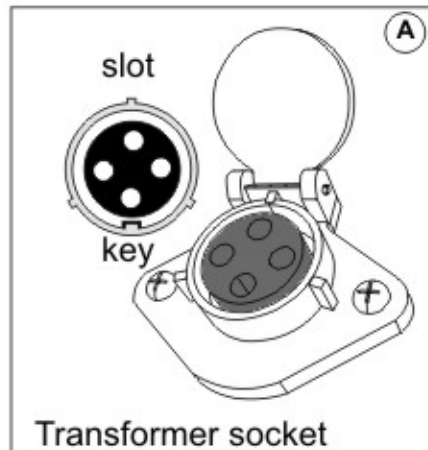
WARNING: A Ground Fault Current Interrupter (GFCI-USA) or a Residual Current Device (RCD-EUROPE) must be installed to protect your electric outlet and prevent any possible electric shock.



handle lock mechanism



Standard Power Supply (Transformer) - Operating instructions



To plug the cable (Fig B) into the socket on the power supply (Fig A), please do the following:

1. Prepare the plug as seen in Fig. C with the key and 3 outside slots exactly as shown.
2. Fit exactly the key and the slots from cable plug with the corresponding key and slots from the transformer socket.
3. Push the plug into the socket of the transformer all the way in.
4. Once the plug is in, rotate the plug to the right to lock it into place.

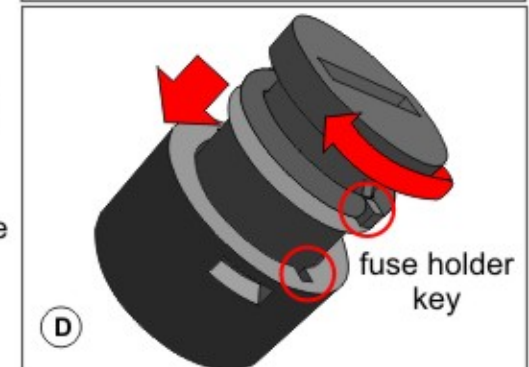
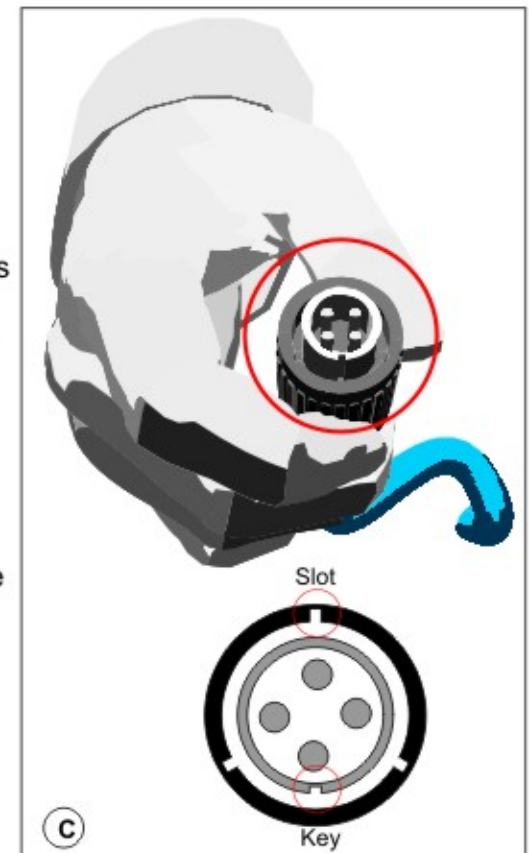
5. To remove the plug, first rotate the plug to the left to unlock it, then pull it out.

a. Light indicates that the machine is running.

b. Green push button turns the machine "ON".

c. Red push button turns the machine "OFF".

IMPORTANT- After every cycle the pool cleaner will turn off automatically. In case you want to turn the machine off during the working cycle, push the **red button** once and the **indicator light** will turn off signaling that the machine has stopped running.

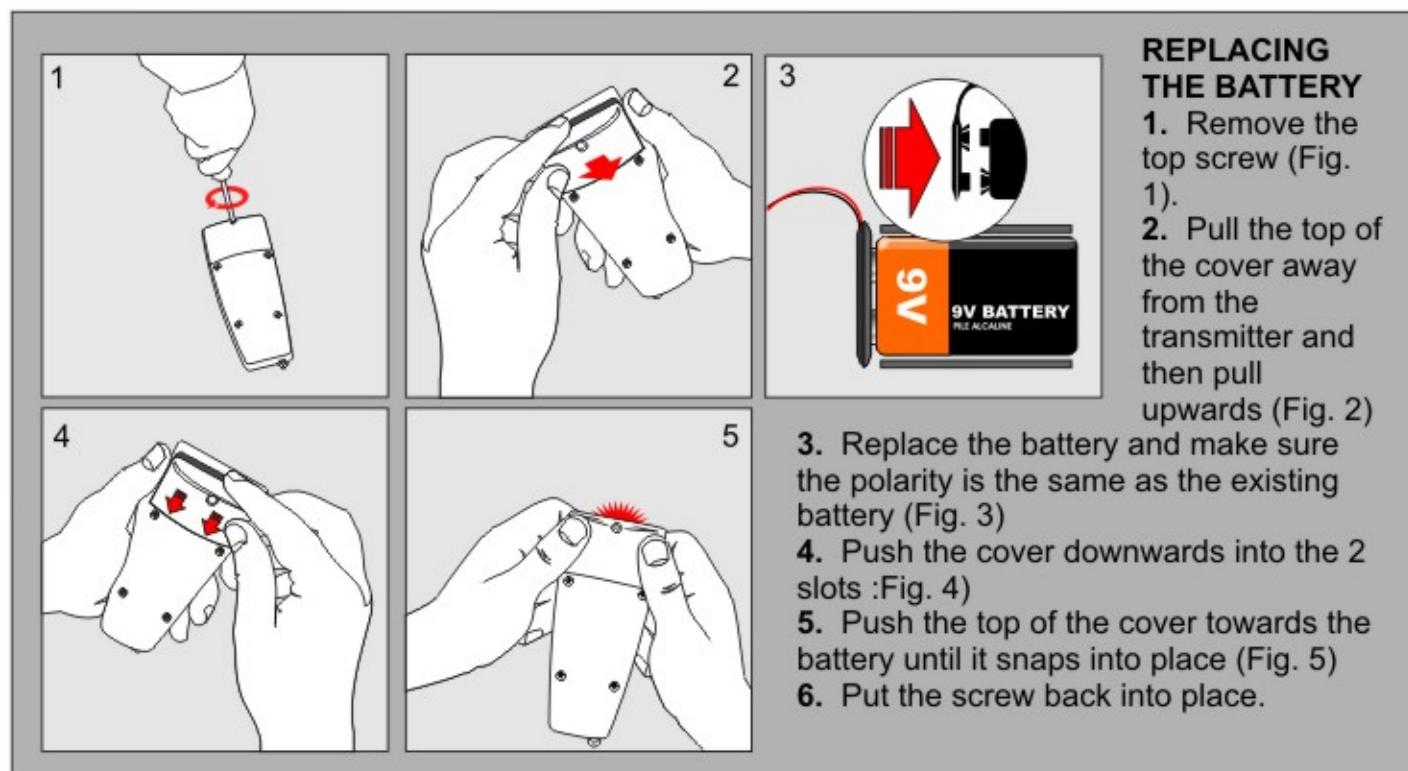
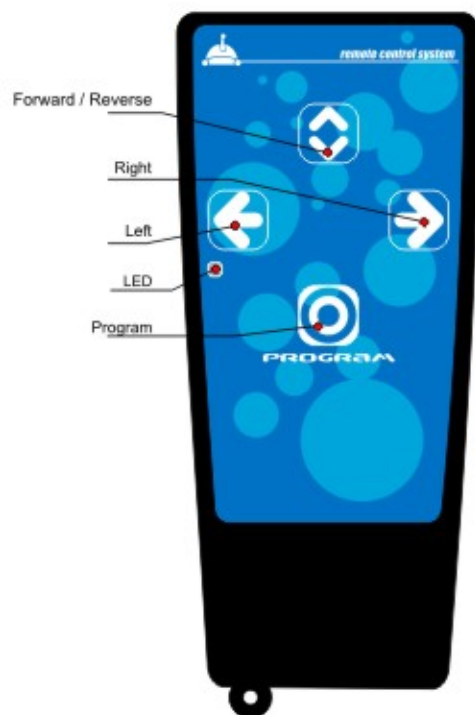


d. The fuse (Fig. D, E). To change the fuse, you must turn the fuse holder to the left using a flat head screwdriver until the fuse comes out. Replace the fuse and insert the holder back into the power supply. To put the fuse holder back, just align the key, push in, and turn to the right (Fig. D).

IMPORTANT : Unplug the power supply before you open the fuse holder. Only a qualified person can control or change the fuse.

Wireless Remote Control - R/C Model

Using Radio Remote Control Feature and accessing Cleaning Modes



The Remote Control Model is equipped with a multi-directional radio transmitter . This feature will enable you to guide the pool cleaner directly to areas of the pool requiring additional cleaning attention or for quick clean-ups. When you press the Right or Left Buttons, the unit will turn until the button is released. Then, the machine will proceed straight ahead in the new direction. Pressing the Forward/Reverse button will cause the cleaner to proceed in the new direction after the button has been released.

Cleaning Modes

The Remote Control has an advanced cleaning program with two options:

Option 1: Standard Mode-cleans the bottom of the pool only in just 1 hour (maximum 90 minutes on large swimming pools).

Option 2: Super Mode-cleans the bottom and walls of the swimming pool in just 3 hours. Every remote control unit is shipped from the factory with the Standard Mode as the primary program. To Switch from the Standard to the Special Mode, simply press the "Program" button once. The machine will immediately receive the command and will start to clean the bottom and the walls. Your signal that the machine is in the special mode is that the machine will stop for a moment after pressing the button and climb up to the waterline in the first contact with a wall. To return to the Standard Mode, simply press the "Program" button again only when the machine is on the pool bottom.

PLEASE NOTE: When the Power Supply is turned off, the Mode is automatically returned to the "Standard" (floor cleaning only) Mode.

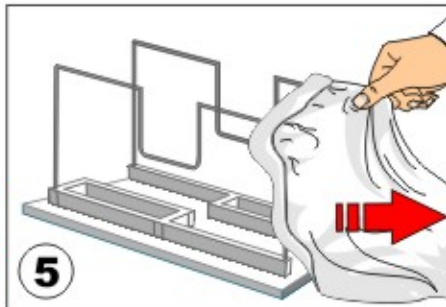
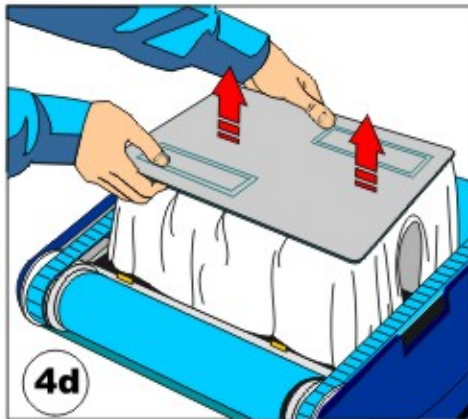
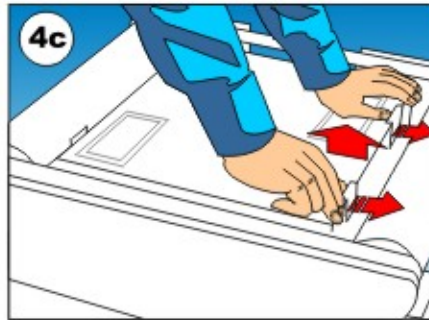
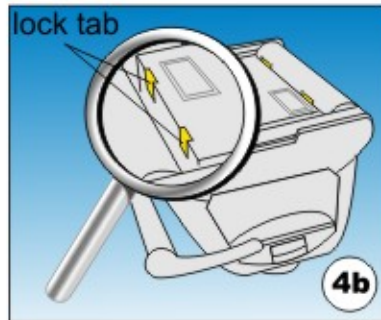
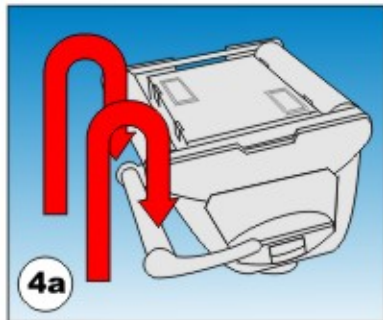
important

Please be sure to always keep your Blue Diamond pool cleaner properly stored anywhere between 10 to 40 degrees Celsius (50 to 104 degrees Fahrenheit). This will keep the motors, plastics and seals protected. Failure to comply will result in loss of warranty.

Maintenance and adjustment of Blue Diamond Pool Cleaner

CLEAN THE FILTER BAG AFTER EVERY CLEANING CYCLE

- a. Unplug the power supply. (Please keep the plug away from contact with water)
- b. If the unit is in the pool, gently pull the cleaner toward you using the cable until the handle is within reach. Use the handle (not the cable) to pull the cleaner out of the pool after allowing most of the water to drain from the unit.
- c. Lay the unit on its back on a smooth surface (in order to prevent scratches on the machine body), unlock and remove the bottom lid assembly. (fig.4a, 4b, 4c, 4d)
- d. Remove the filter bag from the support bars, turn it inside out and wash off all the dirt with a garden hose or in a sink. Squeeze the bag gently until the rinse water is clear. If necessary, machine wash the bag using only cold water with **NO DETERGENT!** (fig.5)
- e. Re-install the bag on the support bars with the **label** in the center of one of the long sides of the bottom lid (5A)
- f. Re-install the bottom lid assembly in the body. Push down on it until all 4 lock tabs will snap into place properly.

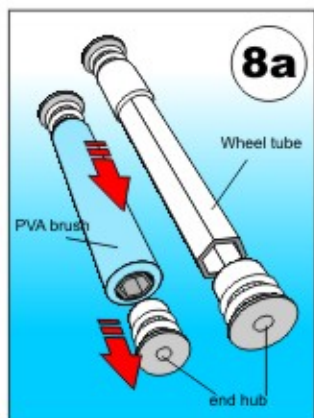


- Shut off and unplug the power supply every time you remove the cleaner from the water.
- Clean the filter bag after every cycle.
- Reverse the handle after every cleaning cycle to avoid tangling the cable.
- Periodically straighten out the floating cable.
- Replace worn brushes to ensure maximum cleaning performance
- Make sure that your pool cleaner positions itself properly on the wall. The machine handle must rest parallel to the water line upon reaching the surface of the water.
- Save your cleaner's packaging for off-season storage or for shipping the unit to your dealer if service is required.
- Store the unit and accessories on the caddy.
- Leave your pool cleaner in the water for 15 to 20 minutes after every cleaning cycle.
- **Do not leave your cleaner in direct sunlight when not in use.**
- **Never leave the power supply in direct sunlight and avoid leaving it in the rain.**
- Occasionally, you should rinse your cleaner in clean, fresh water. This will lengthen the service life of the drive belts, drive tracks and scrubbing brushes.

CHANGING THE DRIVE BELTS

Depending on usage, the drive belts (located behind the side plate) will stretch. When this happens, in order to maintain the optimum performance of the Blue Diamond, these drive belts have to be changed.

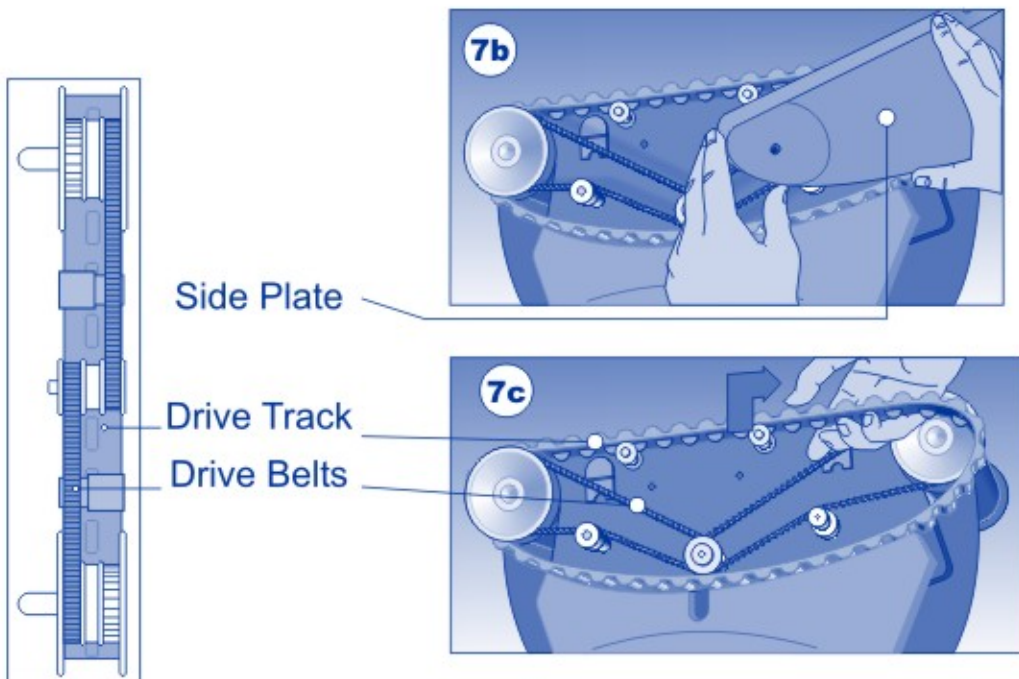
- Unplug the power supply. Turn the Blue Diamond upside down and remove the bottom lid assembly (fig. 4a, 4b, 4c, 4d) see page 5.
- Inside, locate four screws on drive motor side, which hold the side plate in place (fig. 7a).
- Take out these four screws and remove the side plate (fig. 7a, 7b).
- Remove the drive track. Before removing the drive track, notice carefully how the drive belts are positioned for re-assembly (fig. 7c).
- Take out the old drive belts and replace them with new ones.
To re-assemble, reverse steps d to a.



CHANGING BRUSHES

Depending upon how frequently you use the cleaner pool cleaner, it will be necessary to replace the brushes when they are worn out. Worn out brushes will impede cleaner's scrubbing, climbing the walls or general performance.

- Detach one of the side plates, unscrewing the four screws (see fig. 7a).
- With side plate detached, take out the wheel tube from the machine.
- Open the end hub and pull out the worn PVA brush. (see fig. 8a)
- Place the new PVA brush on to the hexagonal tube and close it with the end hub.
- Reinstall the wheel tube in place and place back the side plate screwing back the four screws.

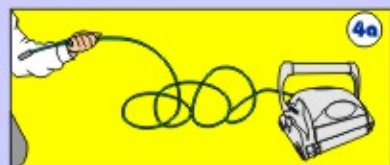


Cable care

The cable may become twisted after a period of time in use. To correct this condition, simply lock the moveable handle on the top of the cleaner in the opposite diagonal direction. The pool cleaner will now travel in the opposite direction while cleaning your pool and the cable will uncoil. Check the cable periodically for external damage. If the problem persists, use the E-Z Swivel device.

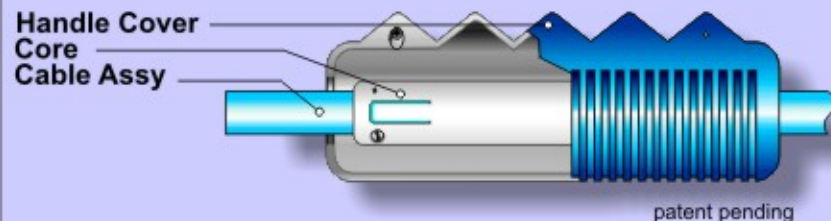


Holding with one hand the E-Z Swivel.



The core will rotate inside the cover and in this way will untangle the cable.

Place the Robot on the ground and unplug the cable from the transformer. With one hand, holding the E-Z Swivel (see photo 3), walk away from the Robot, pulling the cable to its full length.



patent pending

