

## 9" Square SUN Suction Outlet Cover and Mud Frame

### VGB Series

#### Product Specification Sheet

#### Features

For single or multiple drain use  
(see installation instructions)

Requires a minimum 3" sump depth

Floor: 212 GPM at 3.5 fps  
Wall: 128 GPM at 2.1 fps

Floor/wall: 92.6 GPM at 1.5 fps  
19.7 square inch opening

#316 stainless steel screws

The SUN Series has the lowest profile  
9" x 9" and 12" x 12" VGB 2008 compliant  
suction outlets in the industry

Manufactured from superior  
UV-resistant engineered polymers

Easily and safely retrofits most brands'  
existing 9" frames\* (see chart and  
installation instructions for details and  
special requirements)

Mud frame included for new construction

All components (cover, adapter plate, frame,  
screws) meet or exceed NSF 50/ASME/ANSI  
A112.19.8a-2008 national standards and  
ASTM G154 UV testing exposure

Listed with IAPMO R&T

20 per case

The AquaStar line of suction outlet covers, compliant with the new  
Virginia Graeme-Baker Pool and Spa Safety Act (ASME/ANSI A112.19.8a-2008)

### NEW SUN Series

Lowest profile – great for spas and wading pools!



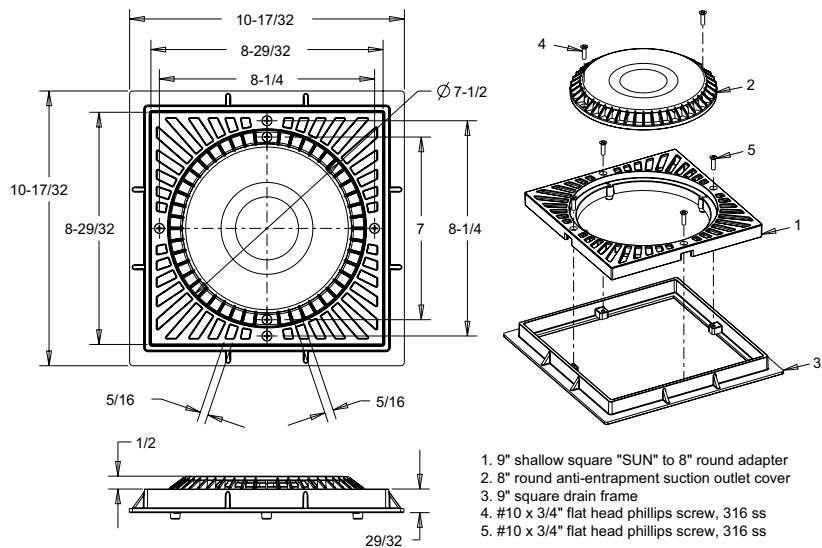
Part # SUN9xxx

\*Fits: AquaStar, Pentair #1, AquaStar pre-VGB (3/4" deep frames)

#### Part Numbers / Colors

- SUN9101 White
- SUN9102 Black
- SUN9103 Lt. Gray
- SUN9104 Blue
- SUN9105 Dk. Gray
- SUN9106 Bone
- SUN9107 Taupe
- SUN9108 Tan

VGB 2008 Compliant



## ADDITIONAL PRODUCT CONFIGURATIONS FOR SUN9xxx

### Features: Sump Buckets for SUN9xxx

For single or multiple drain use (see installation instructions)

#316 stainless steel screws

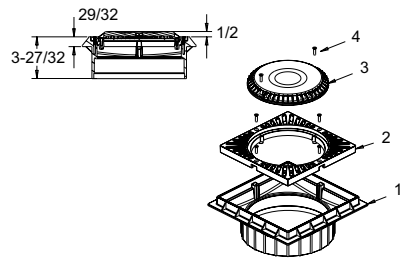
The SUN Series has the lowest profile 9" x 9" and 12" x 12" VGB 2008 compliant suction outlets in the industry

Manufactured from superior UV-resistant engineered polymers

All components (cover, adapter plate, frame, screws) meet or exceed NSF 50/ASME/ANSI A112.19.8a-2008 national standards and ASTM G154 UV testing exposure

Sold with SUN9xxx, not sold separately

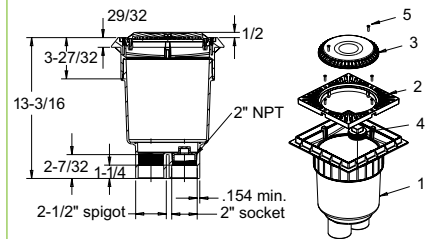
#### 9" Square SUN to 8" Anti-Entrapment Suction Outlet with 9" Square Double-Deep Sump



Part #  
SUN9DDxxx  
4 per case

1. 9" square double-deep frame
2. 9" square "sun" to 8" round adapter
3. 8" anti-entrapment suction outlet
4. #10 x 3/4" flat head phillips screw, 316 ss, qty 6

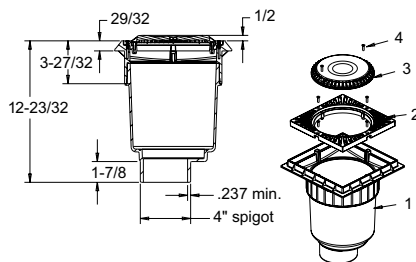
#### 9" Square SUN Suction Outlet with Dual-Port 2 1/2" Spigot x 2" Socket Deep PVC Sump



Part #  
SUN9DDSBxxx  
2 per case

1. Dual-port 2-1/2" spigot x 2" socket deep PVC sump
2. 9" square "sun" to 8" round adapter
3. 8" anti-entrapment suction outlet
4. 2" tapered pipe thread plug
5. #10 x 3/4" flat head phillips screw, 316 ss, qty 6

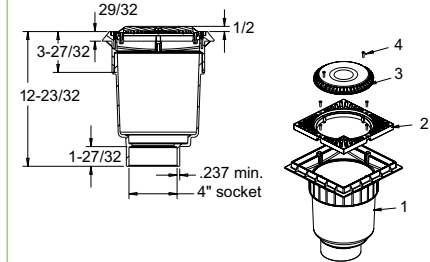
#### 9" Square SUN Suction Outlet with 4" Spigot Deep PVC Sump



Part #  
SUN9DDSB4SPxxx  
2 per case

1. 4" spigot deep PVC sump
2. 9" square "sun" to 8" round adapter
3. 8" anti-entrapment suction outlet
4. #10 x 3/4" flat head phillips screw, 316 ss, qty 6

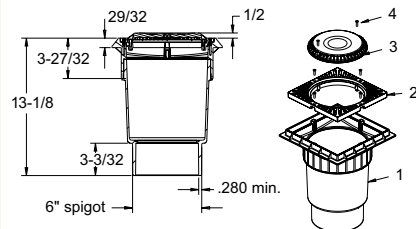
#### 9" Square SUN Suction Outlet with 4" Socket Deep PVC Sump



Part #  
SUN9DDSB4S0Cxxx  
2 per case

1. 4" socket deep PVC sump
2. 9" square "sun" to 8" round adapter
3. 8" anti-entrapment suction outlet
4. #10 x 3/4" flat head phillips screw, 316 ss, qty 6

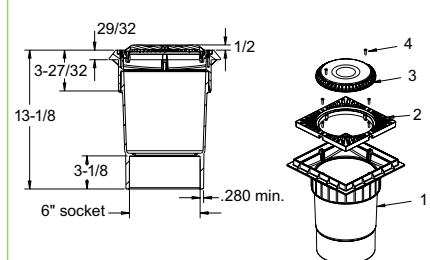
#### 9" Square SUN Suction Outlet with 6" Spigot Deep PVC Sump



Part #  
SUN9DDSB6SPxxx  
2 per case

1. 6" spigot deep PVC sump
2. 9" square "sun" to 8" round adapter
3. 8" anti-entrapment suction outlet
4. #10 x 3/4" flat head phillips screw, 316 ss, qty 6

#### 9" Square SUN Suction Outlet with 6" Socket Deep PVC Sump



Part #  
SUN9DDSB6S0Cxxx  
2 per case

1. 6" socket deep PVC sump
2. 9" square "sun" to 8" round adapter
3. 8" anti-entrapment suction outlet
4. #10 x 3/4" flat head phillips screw, 316 ss, qty 6