

## 32" CHANNEL DRAIN DEBRIS CATCHER SUCTION OUTLET WITH PVC THREE-PORT MANUFACTURED SUMP

### VGB Series

The AquaStar line of suction outlet covers, compliant with the Virginia Graeme-Baker Pool and Spa Safety Act (ANSI/APSP 16-2011 and NSF/ANSI 50-2009a)

#### FEATURES

Uniquely engineered concave/convex design allows for superior debris catching while exceeding UL articulate probe finger and knuckle ASME A112 2008 tests

For single or multiple drain use (see installation instructions for plumbing, hydrostatic valve/drain pipe and single or multi-pump connections)

Single

Floor: 196 GPM at 1.3 fps

Wall: 192 GPM at 1.2 fps

Floor/wall: 236 GPM at 1.5 fps

Floor/wall: 156.2 GPM at 1.0 fps

50.1 square inch opening

#316 stainless steel screws

PVC sump (standard)

Manufactured from superior UV-resistant engineered polymers

Three ports: bottom 2½" OD, 2" ID S/S; inside 2" threaded FPT; two 2" threaded plugs included

All components meet or exceed ANSI/APSP 16-2011 and NSF/ANSI 50-2009a national standards and ASTM G154 UV testing exposure

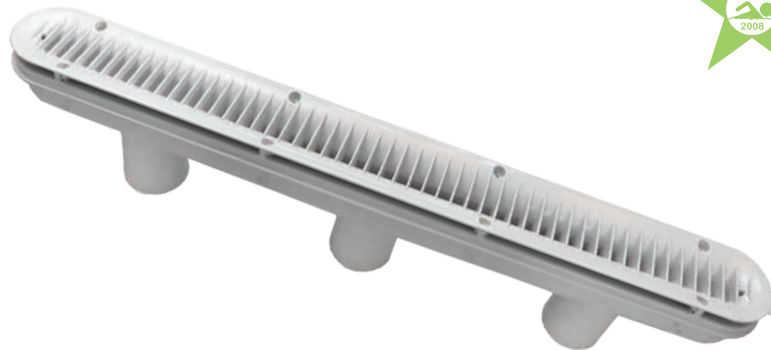
Disposable plastic pre-gunite/plaster insert keeps debris out and retains sump shape during construction

Does not require use of transition glue

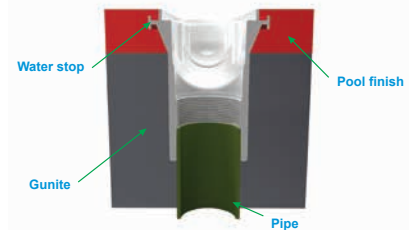
Replace every five years from the date of installation

4 per case

### Unblockable debris catcher



#### New waterstop feature



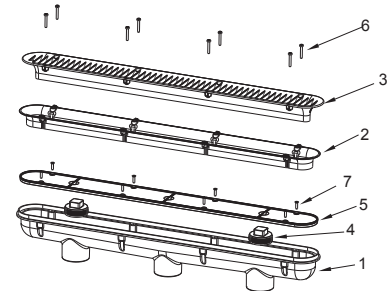
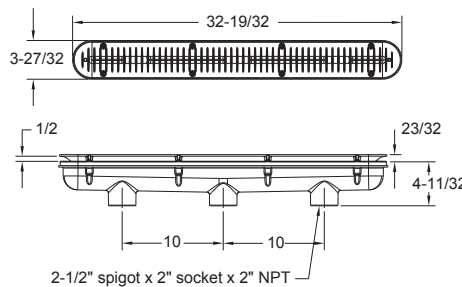
With sump (concrete pools)  
Part # 32CDLTxxx

#### STANDARD COLORS

- 32CDLT101 – White
- 32CDLT102 – Black
- 32CDLT103 – Light Gray
- 32CDLT104 – Blue
- 32CDLT105 – Dark Gray
- 32CDLT108 – Tan

Also available as sump only  
p/n 32CDPxxx  
4 per case

VGB 2008 Compliant



1. 32" three-port manufactured sump bucket
2. 32" leaf trap insert
3. 32" leaf trap cover
4. 2" NPT plug, qty 2
5. 32" channel drain, plaster shield
6. #10 x 1-1/4" pan head Phillips screw, 316 ss, qty 8
7. #10 x 3/4" flat head Phillips Type A screw, 316 ss, qty 8