

10" Anti-Entrapment Suction Outlet Cover, Vented Riser Ring and Mud Frame

VGB Series

The AquaStar line of suction outlet covers, compliant with the new Virginia Graeme-Baker Pool and Spa Safety Act (ANSI/APSP 16-2011 AND NSF 50-2008)

Features

For single or multiple drain use
(see installation instructions)

Single – 3" sump depth:
Floor: 206 GPM at 4.1 fps
Wall: 96 GPM at 1.9 fps

Floor/wall: 76.2 GPM at 1.5 fps
16.3 square inch opening

Additional sump versions
also available

#316 stainless steel screws

Manufactured from superior
UV-resistant engineered polymers

Meets or exceeds ANSI/APSP 16-2011
AND NSF 50-2008 national standards
and ASTM G154 UV testing

Listed with IAPMO R&T

8 per case

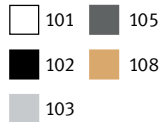


Also fits 10" Waterwat and Color Match

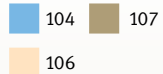
10" Round Vented Riser Ring also sold separately
part # 10RRxxx

Part # 10AVWRxxx

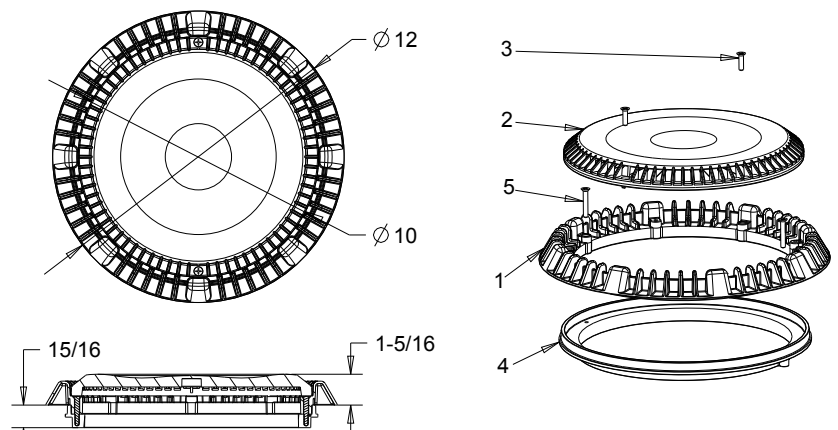
STANDARD COLORS



OPTIONAL COLORS



VGB 2008 Compliant



1. 10" vented riser ring
2. 10" anti-entrapment suction outlet cover
3. #10 x 3/4" flat head phillips type-a screw, 316 ss
4. 10" round frame
5. #10 x 1-1/4" flat head phillips type-a screw, 316 ss

ADDITIONAL PRODUCT CONFIGURATIONS FOR 10AVWRxxx

Features: Sump Buckets for 10AVWRxxx

For single or multiple drain use (see installation instructions)

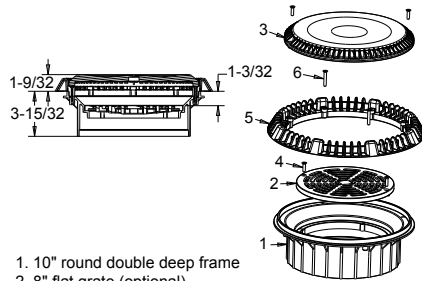
#316 stainless steel screws

Manufactured from superior UV-resistant engineered polymers

Meets or exceeds ANSI/APSP 16-2011 AND NSF 50-2008 national standards and ASTM G154 UV testing

Sold with 10AVWRxxx, not sold separately

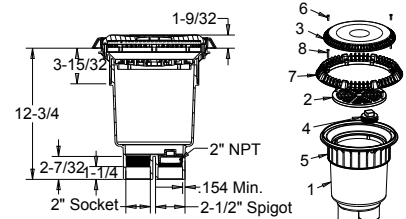
Double-Deep Sump



Part #
10AVWRxxxA
4 per case

1. 10" round double deep frame
2. 8" flat grate (optional)
3. 10" anti-entrapment suction outlet cover
4. #10 x 3/4" flat head phillips type-a screw, 316 ss
5. 10" vented riser ring
6. #10 x 1-1/4" flat head phillips type-a screw, 316 ss

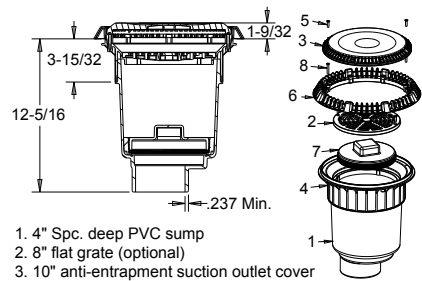
Dual-Port 2 1/2" Spigot x 2" Socket Deep PVC Sump



Part #
10AVWRxxxB
4 per case

1. Dual port 2-1/2" spigot x 2" socket deep PVC sump
2. 8" flat grate (optional)
3. 10" anti-entrapment suction outlet cover
4. 2" tapered pipe thread plug
5. 10" anti-entrapment round sump frame
6. #10 x 3/4" flat head phillips type-a screw, 316 ss
7. 10" vented riser ring
8. #10 x 1-1/4" flat head phillips type-a screw, 316 ss

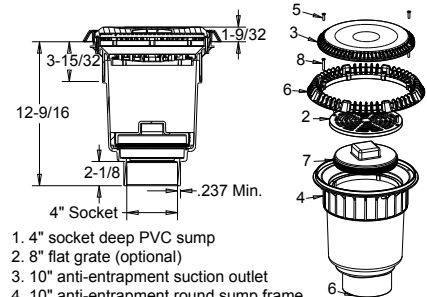
4" Spigot Deep PVC Sump



Part #
10AVWRxxxC
4 per case

1. 4" Spc. deep PVC sump
2. 8" flat grate (optional)
3. 10" anti-entrapment suction outlet cover
4. 10" anti-entrapment round sump frame
5. #10 x 3/4" flat head phillips type-a screw, 316 ss
6. 10" vented riser ring
7. Plug, 4" NPT, deep sump bucket
8. #10 x 1-1/4" flat head phillips type-a screw, 316 ss

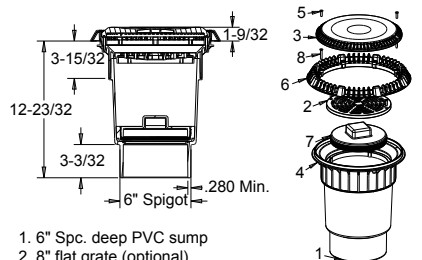
4" Socket Deep PVC Sump



Part #
10AVWRxxxD
4 per case

1. 4" socket deep PVC sump
2. 8" flat grate (optional)
3. 10" anti-entrapment suction outlet
4. 10" anti-entrapment round sump frame
5. #10 x 3/4" lg flat head phillips screw, 316 ss
6. 10" vented riser ring
7. Plug, 4" NPT, deep sump bucket
8. #10 x 1 1/4" flat head phillips type-a screw, 316 ss

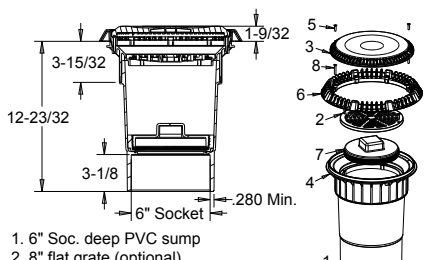
6" Spigot Deep PVC Sump



Part #
10AVWRxxxE
4 per case

1. 6" Spc. deep PVC sump
2. 8" flat grate (optional)
3. 10" anti-entrapment suction outlet cover
4. 10" anti-entrapment round sump frame
5. #10 x 3/4" flat head phillips type-a screw, 316 ss
6. 10" vented riser ring
7. Plug, 4" NPT, deep sump bucket
8. #10 x 1-1/4" flat head phillips type-a screw, 316 ss

6" Socket Deep PVC Sump



Part #
10AVWRxxxF
4 per case

1. 6" Soc. deep PVC sump
2. 8" flat grate (optional)
3. 10" anti-entrapment suction outlet cover
4. 10" anti-entrapment round sump frame
5. #10 x 3/4" flat head phillips type-a screw, 316 ss
6. 10" vented riser ring
7. Plug, 4" NPT, deep sump bucket
8. #10 x 1-1/4" flat head phillips type-a screw, 316 ss