

10" Anti-Entrapment Suction Outlet Cover, Solid Riser Ring and Mud Frame

VGB Series

The AquaStar line of suction outlet covers, compliant with the new Virginia Graeme-Baker Pool and Spa Safety Act (ANSI/APSP 16-2011 AND NSF 50-2008)

Features

For single or multiple drain use
(see installation instructions)

Single – 3" sump depth:
Floor: 166 GPM at 4.8 fps
Wall: 96 GPM at 2.8 fps

Floor/wall: 53 GPM at 1.5 fps

11.2 square inch opening

Additional sump versions
also available

#316 stainless steel screws

Manufactured from superior
UV-resistant engineered polymers

Meets or exceeds ANSI/APSP 16-2011
AND NSF 50-2008 national standards
and ASTM G154 UV testing

Listed with IAPMO R&T

10" Round Solid Riser Ring
also sold separately
part # 10AVRRxxx

8 per case



Part # 10AVRxxx

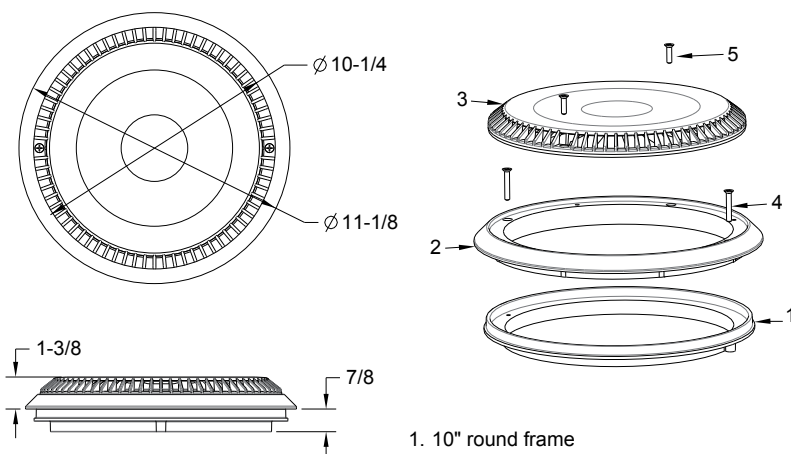
Also fits: 10" Waterway and Color Match
10" Round Solid Riser Ring also sold separately
part # 10AVRRxxx

STANDARD COLORS

- 101 (White) 105 (Dark Grey)
- 102 (Black) 108 (Orange)
- 103 (Light Grey)

OPTIONAL COLORS

- 104 (Blue) 107 (Brown)
- 106 (Light Orange)



1. 10" round frame
2. Riser ring for 10" cover
3. 10" anti-entrapment suction outlet cover
4. #10 x 1-1/4" flat-head Phillips type-A screw, 316 ss, qty 2
5. #10 x 3/4" flat-head Phillips type-A screw, 316 ss, qty 2

VGB 2008 Compliant

ADDITIONAL PRODUCT CONFIGURATIONS FOR 10AVRxxx

Features: Sump Buckets for 10AVRxxx

For single or multiple drain use (see installation instructions)

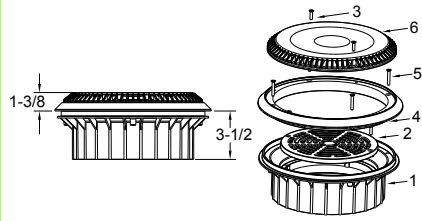
#316 stainless steel screws

Manufactured from superior UV-resistant engineered polymers

Meets or exceeds ANSI/APSP 16-2011 AND NSF 50-2008 national standards and ASTM G154 UV testing

Sold with 10AVRxxx, not sold separately

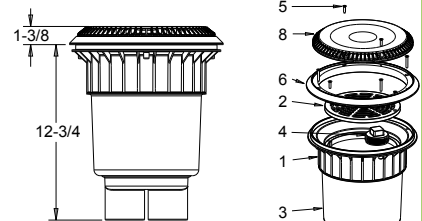
Double-Deep Sump



1. 10" round double deep frame
2. 8" flat grate (optional)
3. #10 x 3/4" flat head phillips type-a screw, 316 ss, qty 4
4. Riser ring for 10" cover
5. #10 x 1-1/4" flat head phillips type-a screw, 316 ss, qty 4
6. 10" anti-entrapment suction outlet cover

Part #
10AVRxxxA
4 per case

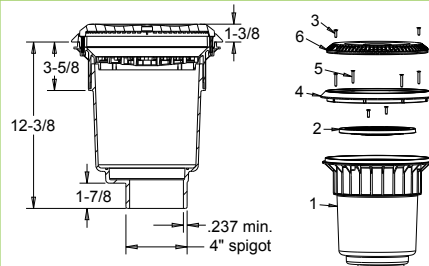
Dual-Port 2 1/2" Spigot x 2" Socket Deep PVC Sump



1. 10" anti-entrapment suction outlet cover
2. 8" flat grate (optional)
3. Dual port 2 1/2" spigot x 2" socket deep PVC sump
4. 8" tapered pipe thread plug
5. #10 x 3/4" flat head phillips type-a screw, 316 ss, qty 4
6. Riser ring for 10" cover
6. #10 x 1 1/4" flat head phillips type-a screw, 316 ss, qty 4
6. 10" anti-entrapment suction outlet cover

Part #
10AVRxxxB
4 per case

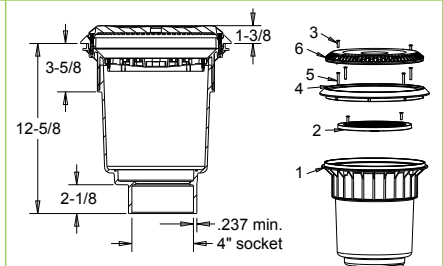
4" Spigot Deep PVC Sump



1. 4" spigot deep PVC sump
2. 8" flat grate (optional)
3. #10 x 3/4" flat head phillips screw type-a, 316 ss, qty 4
4. Riser ring for 10" cover
5. #10 x 1 1/4" flat head phillips screw type-a, 316 ss, qty 4
6. 10" anti-entrapment suction outlet cover

Part #
10AVRxxxC
4 per case

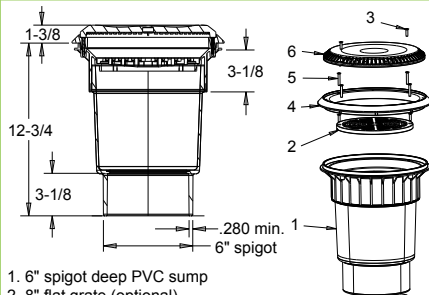
4" Socket Deep PVC Sump



1. 4" socket deep PVC sump
2. 8" flat grate (optional)
3. #10 x 3/4" flat head phillips screw type-a, 316 ss, qty 4
4. Riser ring for 10" cover
5. #10 x 1 1/4" flat head phillips screw type-a, 316 ss, qty 4
6. 10" anti-entrapment suction outlet cover

Part #
10AVRxxxD
4 per case

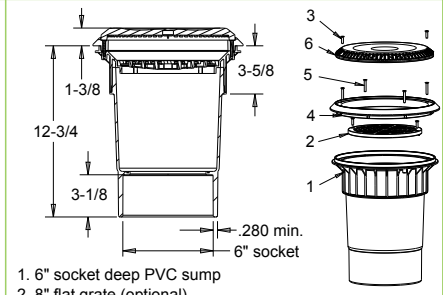
6" Spigot Deep PVC Sump



1. 6" spigot deep PVC sump
2. 8" flat grate (optional)
3. #10 x 3/4" flat head phillips screw type-a, 316 ss, qty 4
4. Riser ring for 10" cover
5. #10 x 1-1/4" flat head phillips screw type-a, 316 ss, qty 4
6. 10" anti-entrapment suction outlet cover

Part #
10AVRxxxE
4 per case

6" Socket Deep PVC Sump



1. 6" socket deep PVC sump
2. 8" flat grate (optional)
3. #10 x 3/4" flat head phillips screw type-a, 316 ss, qty 4
4. Riser ring for 10" cover
5. #10 x 1-1/4" flat head phillips screw type-a, 316 ss, qty 4
6. 10" anti-entrapment suction outlet cover

Part #
10AVRxxxF
4 per case