

# 14" SQUARE ANTI-ENTRAPMENT SUCTION OUTLET COVER FOR 9" SQUARE RETROFITS OR NEW CONSTRUCTION



Certified to  
NSF/ANSI/CAN 50  
ANSI/APSP/ICC-16 2017

Open Area  
84 in<sup>2</sup>

For SOFA Specific Flow Ratings and specifications please scan QR code or visit  
[www.aquastarpoolproducts.com/flowcode](http://www.aquastarpoolproducts.com/flowcode)



## FEATURES

Certified, Listed, and Labeled in conformance with APSP/ANSI/ICC-16 2017 and NSF/ANSI/CAN 50 standards

Retrofit adapter frame easily and safely retrofits most brands' existing 9" mud frames

Ideal for retrofitting over all existing sumps/frames up to 13" by anchoring directly into concrete pool finish using four brass anchors and stainless screws in kit #BIK4

Manufactured from superior UV-resistant engineered polymers

#316 stainless steel screws

Trademarked VGBA compliance button easily identifies VGBA 2017 compliant cover from on deck and underwater

Online product support including downloadable CAD files, General Certificate of Conformity, third-party certificate, installation instructions and more

Replace drain cover every five years from the date of installation

See next page for additional product configurations

6 per case

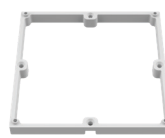
## 914 UNIVERSAL HIGH-FLOW COVER FOR 9" MUD FRAMES



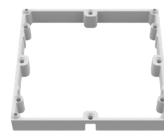
Fits most brands' existing 9" mud frames.  
Retrofits over all sumps/frames up to 13" using brass anchor kit.



Mud frame



Retrofit adapter frame for 3/4" deep 9" square retrofits



Retrofit adapter frame for 1" deep 9" square retrofits

Optional – extra screw holes for anchoring directly into pool finish using four brass anchor kit part # BIK4



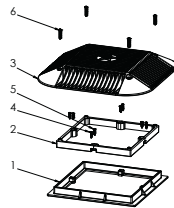
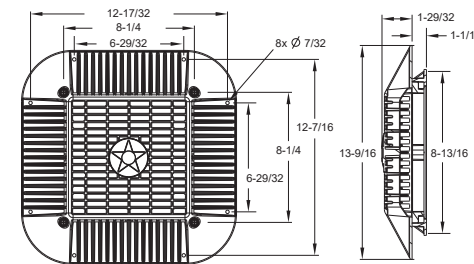
Part # 914xxx



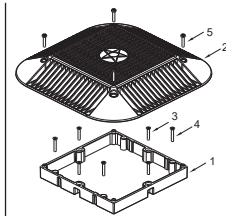
Fits most brands' existing 9" mud frames.  
Retrofits over all sumps/frames up to 13" using brass anchor kit

## STANDARD COLORS

- 914101 – White
- 914102 – Black
- 914103 – Light Gray
- 914105 – Dark Gray
- 914108 – Tan



1. 9" Square Mud Frame
2. 9" to 14" Square Adapter
3. 14" Square Anti-Entrapment Cover
4. 8 x 3/4" Flat Head Phillips, 316 SS, Qty 4
5. 10 x 3/4" Flat Head Phillips, 316 SS, Qty 4
6. 10-32 x 1" Pan Head Phillips, 316 SS, Qty 4



1. 9" to 14" Square Retrofit Adapter Frame
2. 14" Square Anti-Entrapment Cover
3. 10 x 1" Flat Head Phillips, 316 SS, Qty 4
4. 10-24 x 1-1/4" Flat Head Phillips, 316 SS, Qty 4
5. 10-32 x 1" Pan Head Phillips, 316 SS, Qty 4

Also Includes (Not Shown):  
10x1-1/2" Flat Head Phillips,  
316 SS, Qty 4

P 877-768-2717 F 877-276-POOL Outside the US: P +1-949-336-1940 F +1-949-336-1940  
info@aquastarpoolproducts.com www.aquastarpoolproducts.com

## 6" Socket Deep PVC Sump

**NSF**

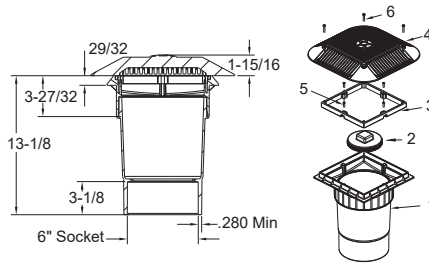
Certified to  
NSF/ANSI/CAN 50  
ANSI/APSP/ICC-16 2017

**Open Area**  
84 in<sup>2</sup>

For SOFA Specific Flow Ratings and  
specifications please scan QR code or visit  
[www.aquastarpoolproducts.com/flowcode](http://www.aquastarpoolproducts.com/flowcode)



Part #  
914xxxF  
1 per case



1. 6" Socket Deep PVC Sump
2. 6" Tapered Threaded Pipe Plug
3. 9" to 14" Square Adapter
4. 14" Square Anti-Entrapment Cover
5. 10 x 3/4" Flat Head Phillips, 316 SS, Qty 4
6. 10-32 x 1" Pan Head Phillips, 316 SS, Qty 4

## 3" Socket x 4" Spigot Side Port PVC Sump

**NSF**

Certified to  
NSF/ANSI/CAN 50  
ANSI/APSP/ICC-16 2017

**Open Area**  
84 in<sup>2</sup>

For SOFA Specific Flow Ratings and  
specifications please scan QR code or visit  
[www.aquastarpoolproducts.com/flowcode](http://www.aquastarpoolproducts.com/flowcode)



**NEW**

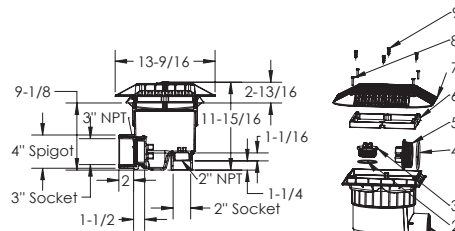
**Hassle-free pressure testing  
and winterizing**



Part #  
914xxxSSB  
1 per case

**Hassle-free pressure  
testing and winterizing**  
Comes with a 3" and  
2" NPT cap with O-ring.  
No knock-outs required.

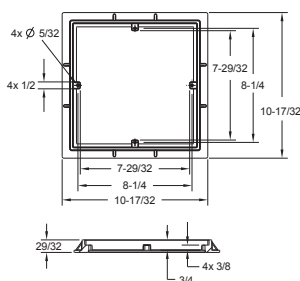
2" Plug and O-Ring, p/n 2SBP101  
3" Plug and O-Ring, p/n 3SBP101



1. Side Port Sump Bucket, 9" Square Frame
2. 2" Plug O-Ring
3. 2" NPT Plug
4. 3" Plug O-Ring
5. 3" NPT Plug
6. 9" to 14" Square Adapter
7. 14" Square Anti-Entrapment Cover
8. 10-32 x 1" Pan Head Phillips, 316 SS, Qty 4
9. 10-24 x 1-1/4" Flat Head Phillips 316 SS, Qty 4

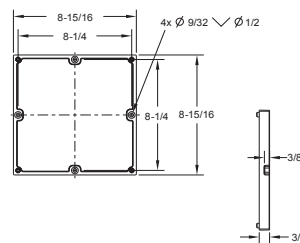
## Adapter and Mud Frame Dimensions

Mud Frame



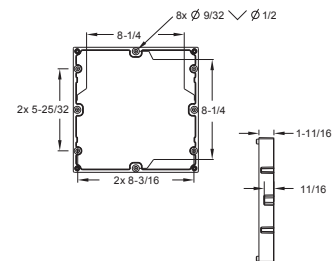
Part # 9FRxxx  
20 per case

Retrofit Adapter Frame  
for 3/4" deep 9" square retrofits



Part # 914FR101  
12 per case

Retrofit Adapter Frame  
for 1" deep 9" square retrofits



Part # R914FR101  
12 per case