

16" SQUARE ANTI-ENTRAPMENT SUCTION OUTLET COVER FOR 12" SQUARE RETROFITS OR NEW CONSTRUCTION



Certified to
NSF/ANSI/CAN 50
ANSI/APSP/ICC-16 2017

Open Area
101in²

For SOFA Specific Flow Ratings and specifications please scan QR code or visit
www.aquastarpoolproducts.com/flowcode



FEATURES

Certified, Listed, and Labeled in conformance with APSP/ANSI/ICC-16 2017 and NSF/ANSI/CAN 50 standards

Easily and safely retrofits into most brands' existing 12" mud frames

Ideal for retrofitting over all existing sumps/frames up to 15" by anchoring directly into concrete pool finish using four brass anchors and stainless screws in kit #BIK4

Manufactured from superior UV-resistant engineered polymers

#316 stainless steel screws

Trademarked VGBA compliance button easily identifies VGBA 2017 compliant cover from on deck and underwater

Online product support including downloadable CAD files, General Certificate of Conformity, third-party certificate, installation instructions and more

Replace drain cover every five years from the date of installation

See next page for additional product configurations

4 per case

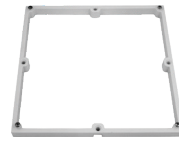
1216 UNIVERSAL HIGH-FLOW COVER FOR 12" MUD FRAMES



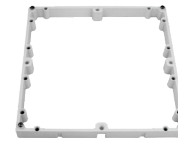
Fits most brands' existing 12" mud frames.
Retrofits over all sumps/frames up to 15" using brass anchor kit.



Mud frame



Retrofit adapter frame for 3/4" deep 12" square retrofits



Retrofit adapter frame for 1" deep 12" square retrofits

Optional – extra screw holes for anchoring directly into pool finish using four brass anchor kit part # BIK4








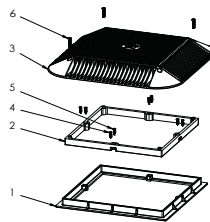
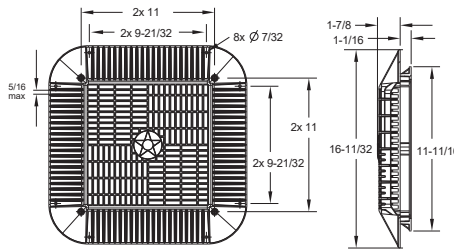
Part # 1216xxx



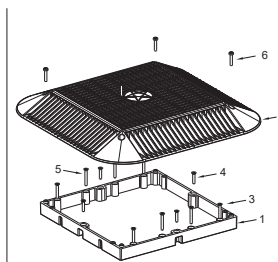
Fits most brands' existing 12" mud frames.
Retrofits over all sumps/frames up to 15" using brass anchor kit

STANDARD COLORS

-  1216101 – White
-  1216102 – Black
-  1216103 – Light Gray
-  1216105 – Dark Gray
-  1216108 – Tan



1. 12" Square Mud Frame
2. 12" to 16" Square Adapter
3. 16" Square Anti-Entrapment Suction Outlet Cover
4. 8 x 3/4" Flat Head Phillips, 316 SS, Qty 4
5. 10 x 3/4" Flat Head Phillips, 316 SS, Qty 4
6. 10-32 x 1" Pan Head Phillips, 316 SS, Qty 4



1. 12" to 16" Square Retro-Fit Adapter Frame
2. 16" Square Anti-Entrapment Suction Outlet Cover
3. 10-24 x 1-1/4" Flat Head Phillips, 316 SS, Qty 4
4. 10 x 1-1/2" Flat Head Phillips, 316 SS, Qty 4
5. 10 x 1" Flat Head Phillips, 316 SS, Qty 4
6. 10-32 x 1" Pan Head Phillips, 316 SS, Qty 4

P 877-768-2717 F 877-276-POOL Outside the US: P +1-949-336-1940 F +1-949-336-1940
info@aquastarpoolproducts.com www.aquastarpoolproducts.com

6" Socket Deep PVC Sump

NSF

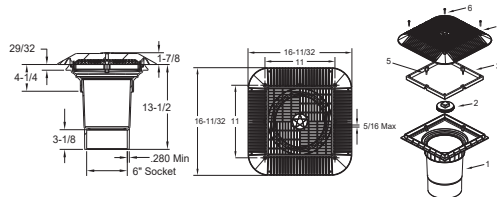
Certified to
NSF/ANSI/CAN 50
ANSI/APSP/ICC-16 2017

Open Area
101in²

For SOFA Specific Flow Ratings and
specifications please scan QR code or visit
www.aquastarpoolproducts.com/flowcode



Part #
1216xxxF
4 per case



1. 6" Socket Deep PVC Sump
2. 6" Tapered Threaded Pipe Plug
3. 12" to 16" Square Adapter
4. 16" Square Anti-Entrapment Suction Outlet Cover
5. 10 x 3/4" Flat Head Phillips, 316 SS, Qty 4
6. 10-32 x 1" Pan Head Phillips, 316 SS, Qty 4

3" Socket x 4" Spigot Side Port PVC Sump

NSF

Certified to
NSF/ANSI/CAN 50
ANSI/APSP/ICC-16 2017

Open Area
101in²

For SOFA Specific Flow Ratings and
specifications please scan QR code or visit
www.aquastarpoolproducts.com/flowcode



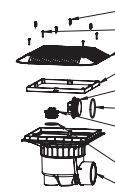
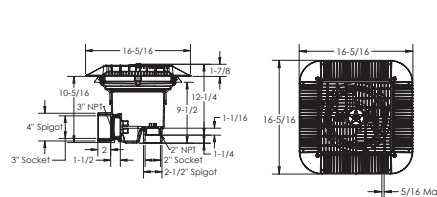
NEW Hassle-free pressure testing
and winterizing



Part #
1216xxxSSB
1 per case

**Hassle-free pressure
testing and winterizing**
Comes with a 3" and
2" NPT cap with O-ring.
No knock-outs required.

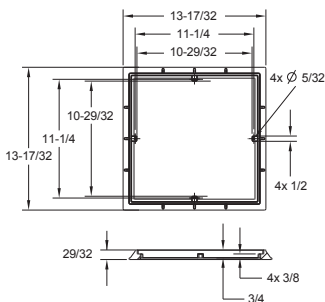
2" Plug and O-Ring, p/n 2SBP101
3" Plug and O-Ring, p/n 3SBP101



1. Side Port Sump Bucket, 12" Square Frame
2. 2" NPT Plug
3. 3" NPT Plug
4. 3" Plug O-Ring
5. 2" Plug O-Ring
6. 10 x 1" Flat Head Phillips 316 SS, Qty 4
7. 10-32 x 1" Pan Head Phillips, 316, Qty 4
8. 16" Square Anti-Entrapment Cover
9. 12" to 16" Square Adapter

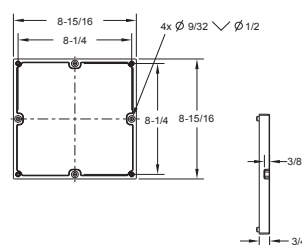
Adapter and Mud Frame Dimensions

Mud Frame



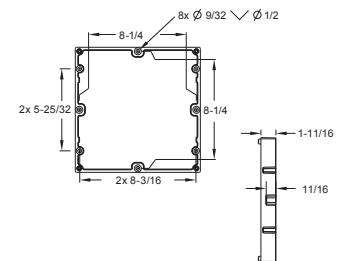
Part # 12FRxxx
12 per case

Retrofit Adapter Frame for 3/4" deep 9" square retrofits



Part # 1216FR101
12 per case

Retrofit Adapter Frame for 1" deep 9" square retrofits



Part # R1216FR101
12 per case