

9" Square Star Anti-Entrapment Suction Outlet Cover, Vented Riser Ring and Mud Frame

VGB Series

The AquaStar line of suction outlet covers, compliant with the new Virginia Graeme-Baker Pool and Spa Safety Act (ANSI/APSP 16-2011 AND NSF 50-2008)

Features

For single or multiple drain use
(see installation instructions)

Single – 3" sump depth
Floor/Wall: 270 GPM at 2.1 fps

Floor/wall:
196.4 GPM at 1.5 fps

42.0 square inch opening

Additional sump versions
also available

Easily and safely retrofits to 9" square
¾" deep frames

#316 stainless steel screws

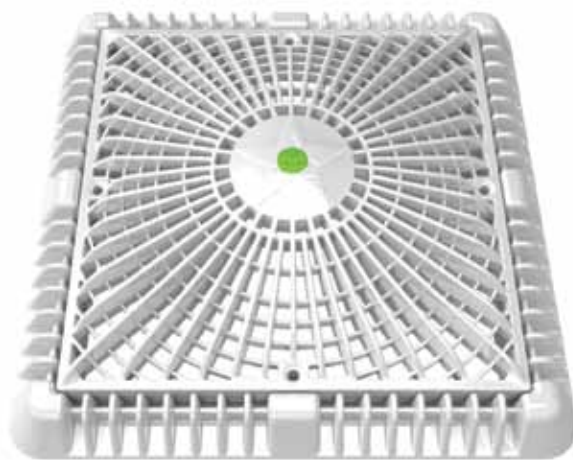
Manufactured from superior
UV-resistant engineered polymers

All components (cover, frame, screws) meet
or exceed ANSI/APSP 16-2011 AND NSF 50-
2008 national standards and ASTM G154 UV
testing exposure

Listed with IAPMO R&T

6 per case

NEW








*Fits: AquaStar (p/n 9xxx, pre-VGB "flat"); Pentair (#1 selling)
with ¾" deep existing frames and four screw hole pattern




9" Square Vented Riser Ring also sold separately
part # 9RRxxx

Part #P9xxx

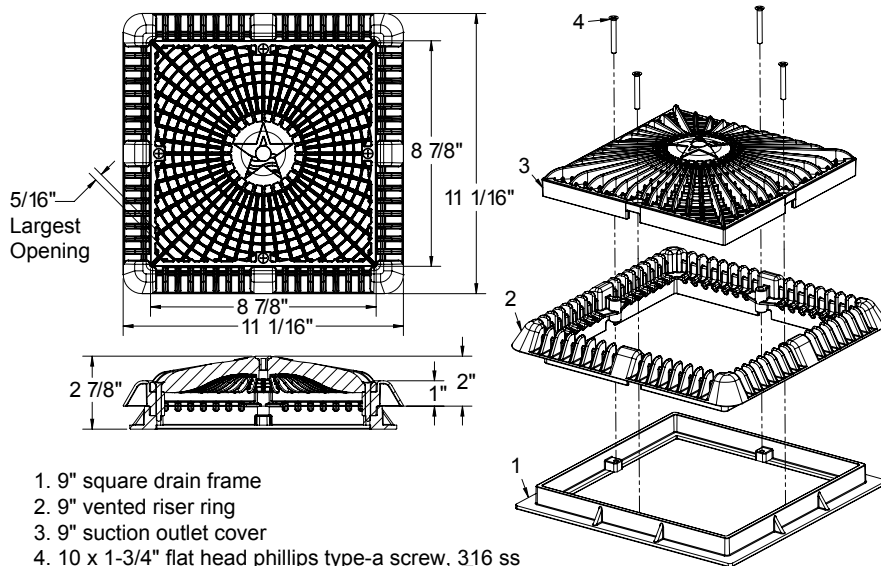
STANDARD COLORS

	101		105
	102		108
	103		

OPTIONAL COLORS

	104		107
	106		

VGB 2008 Compliant



ADDITIONAL PRODUCT CONFIGURATIONS FOR P9xxx

Features: Sump Buckets for P9xxx

For single or multiple drain use (see installation instructions)

#316 stainless steel screws

Manufactured from superior UV-resistant engineered polymers

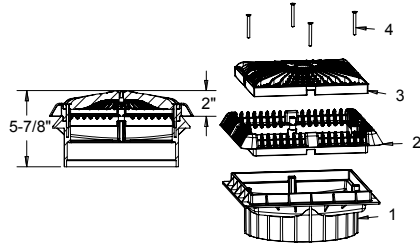
All components (cover, sump, screws) meet or exceed ANSI/APSP 16-2011 AND NSF 50-2008 national standards and ASTM G154 UV testing exposure

Sold with P9xxx, not sold separately

Double-Deep Sump

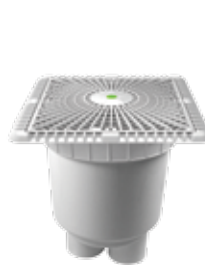


Part #
P9xxxA
4 per case

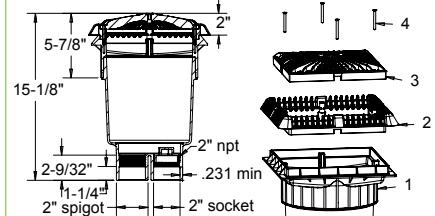


1. 9" square double deep frame
2. 9" vented riser ring
3. 9" suction outlet cover
4. 10 x 1-3/4" flat head phillips type-a screw, 316 ss

Dual-Port 2 1/2" Spigot x 2" Socket Deep PVC Sump



Part #
P9xxxB
2 per case

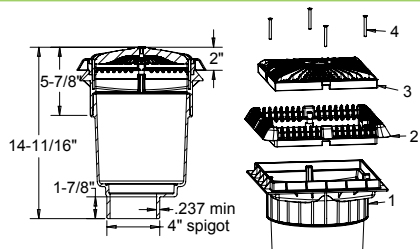


1. 9" square double deep frame
2. 9" vented riser ring
3. 9" suction outlet cover
4. 10 x 1-3/4" flat head phillips type-a screw, 316 ss
5. Dual port 2-1/2" spigot x 2" socket deep pvc sump
6. 2" npt plug

4" Spigot Deep PVC Sump



Part #
P9xxxC
2 per case

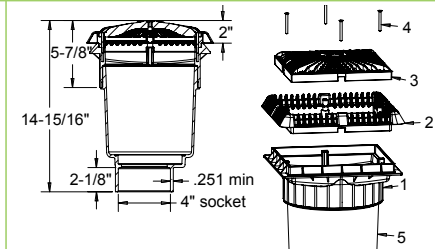


1. 9" square double deep frame
2. 9" vented riser ring
3. 9" suction outlet cover
4. 10 x 1-3/4" flat head phillips type-a screw, 316 ss
5. 4" spigot deep pvc sump

4" Socket Deep PVC Sump



Part #
P9xxxD
2 per case

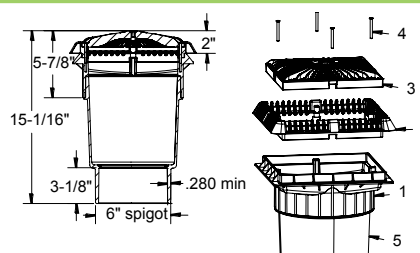


1. 9" square double deep frame
2. 9" vented riser ring
3. 9" suction outlet cover
4. 10 x 1-3/4" flat head phillips type-a screw, 316 ss
5. 4" socket deep pvc sump

6" Spigot Deep PVC Sump



Part #
P9xxxE
2 per case

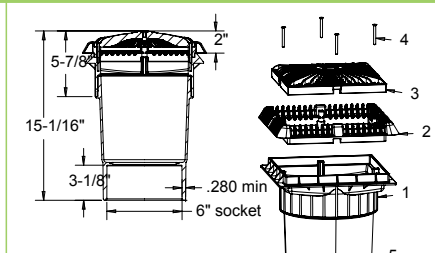


1. 9" square double deep frame
2. 9" vented riser ring
3. 9" suction outlet cover
4. 10 x 1-3/4" flat head phillips type-a screw, 316 ss
5. 6" spigot deep pvc sump

6" Socket Deep PVC Sump



Part #
P9xxxF
2 per case



1. 9" square double deep frame
2. 9" vented riser ring
3. 9" suction outlet cover
4. 10 x 1-3/4" flat head phillips type-a screw, 316 ss
5. 6" socket deep pvc sump