

PRODUCT INFORMATION PACKET



Model No:
Catalog No: SQ1052
1/2 HP 3450 115/230 ODP 48Y THD SHAFT
Induction Motors



Regal and Century are trademarks of Regal Beloit Corporation or one of its affiliated companies.
©2019 Regal Beloit Corporation, All Rights Reserved. MC017097E





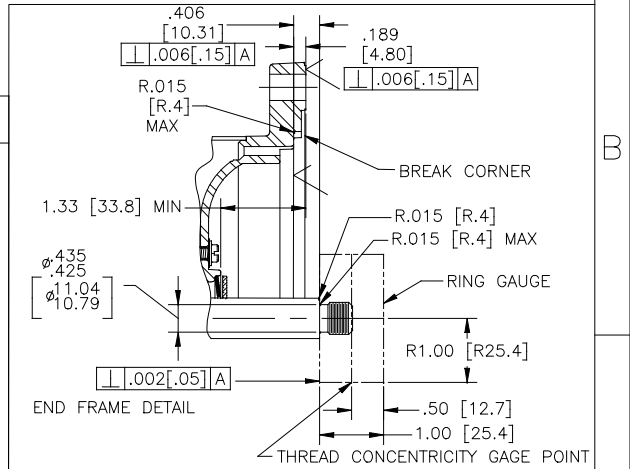
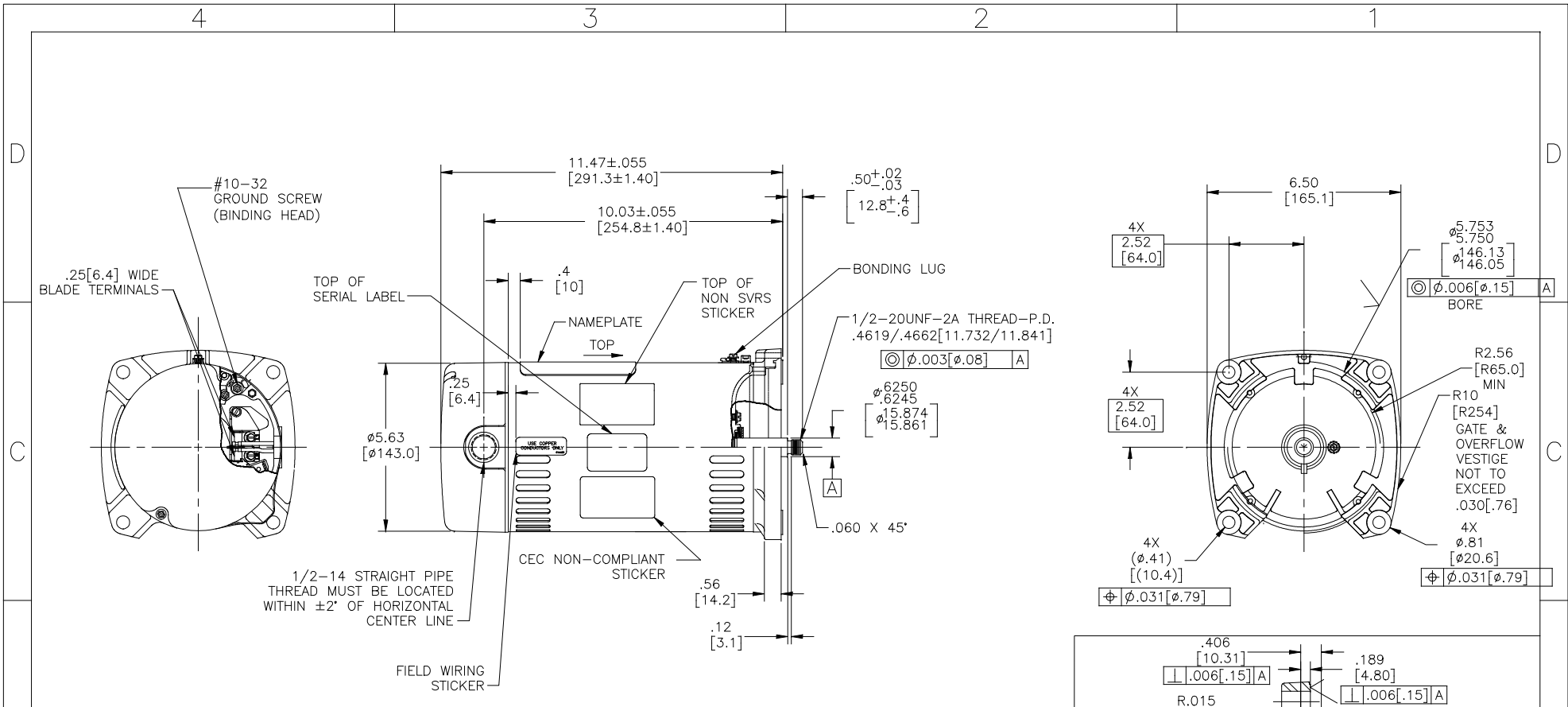
Nameplate Specifications

Output HP	1/2 HP	Output KW	0.37 kW
Frequency	60 Hz	Voltage	230/115 V
Current	6.7/13.4 A	Speed	3450 RPM
Service Factor	1.9	Phase	1
Duty	Continuous	Insulation Class	B
Frame	48Y	Enclosure	Open Drip Proof
Overload Protector	Automatic	Ambient Temperature	50 °C
UL	Recognized	CSA	Y

Technical Specifications

Electrical Type	Cap Start Motor	Poles	2
Rotation	Counterclockwise Pump End	Mounting	Round
Motor Orientation	Horizontal	Drive End Bearing	BALL
Opp Drive End Bearing	BALL	Frame Material	Rolled Steel
Shaft Type	Threaded	Overall Length	12.19 in
Frame Length	8.31 in	Shaft Diameter	0.625 in
Shaft Extension	0.906 in		
Outline Drawing	SQ1052	Connection Diagram	627103-006

This is an uncontrolled document once printed or downloaded and is subject to change without notice. Date Created: 09/19/2019



NAMEPLATE DATA	EXTERNAL CONNECTION DIAGRAM	NOTES
MODEL: C48J2PA105C4 CUST PN: SQ1052 HP: 0.5 SF: 1.9 ROT: CCWPE RPM: 3450 TYPE: UAC FORM: CODE: M FRAME: 48 Y VOLTS: 230/115 AMPS: MAX AMPS: 5.9/11.8 SF AMPS: 6.0/12.0 PH: 1 HZ: 60 INS: B DUTY: CONT ENCLOSURE: ODP THERMALLY PROTECTED	<p> HIGH VOLTAGE SHOWN, ROTATE DIAL CCW TO 115 FOR LOW VOLTAGE. USE COPPER CONDUCTORS ONLY. ACCEPTABLE FOR FIELD WIRING </p>	<ol style="list-style-type: none"> FINISH PAINT TO BE SATIN BLACK. $.44$ [11.2] WRENCH FLATS ON SHAFT—FOR ACCESS TO THIS WRENCH FLAT REMOVE END COVER. STAINLESS STEEL SHAFT EXT. LIMITS ON AMPLITUDE OF VIBRATION MEASURED AT BEARING HOUSING = $.001$. CONNECTED FOR 230 VOLTS. QUICK VOLTAGE CHANGE DIAL INCLUDED ON THE TERMINAL BOARD. SUPPORT PAD TO BE PACKED WITH EACH MOTOR

PERFORMANCE CURVE	APPROVED SAMPLE
C48J2W41	
UL COMPONENT	CSA
FILE# CCN#	FILE# GUIDE#
E25022 XEWR2	LR43341 4211-01
CUSTOMER	DISTRIBUTION SERVICES

DRAWING REVISION	REVISION BY	DATE	TOLERANCES UNLESS OTHERWISE SPECIFIED	DRAWN BY:	DATE:	DESCRIPTION
ECO	APPROVED BY	DATE	DEC. INCH mm ANGLE	JLG	05-12-2009	Regal Beloit America, Inc.
ECO-0165900			X ± 0.1 [2.5]			
SEE ECO			JX ± 0.02 [0.51]	APPROVED BY:		
			JXX ± 0.005 [0.127]	DATE:		
			JXXX ± 0.0005 [0.0127]	REFERENCE:		
			JXXXX ± 0.0001 [0.00254]	MATERIAL:		
			REMOVE BURRS & BREAK SHARP EDGES .003/.015 [0.076/.381]	PROCESS/FINISH		
			CORNER FILLETS .02 [0.51]	SIZE DWG NO		
			MACHINED SURFACES	THIRD ANGLE PROJECTION		
			INCH mm			
			mm SHOWN IN BRACKETS			