

## Why Nicheless?

### EASY TO INSTALL

Jandy Pro Series Nicheless LED Lights require no bonding or traditional niches, making the installation process quick and simple. During construction, simply mount the light directly to the finished 1½" electrical conduit.



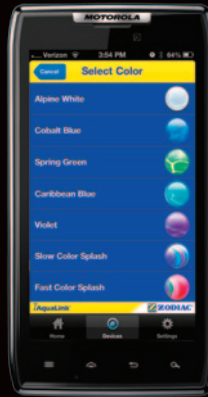
### BRIGHTER, MORE EVEN LIGHTING

For even lighting with fewer hotspots, use multiple lower power lights instead of one high power light. Since the lights are less expensive, and no niches are required, installing more nicheless lights may even cost less than installing a smaller number of traditional lights.



### EASY TO RETROFIT

Jandy Pro Series Nicheless Lights are the perfect retrofit for fiber optic replacement, especially when a 1½" return fitting is already in place. Niche cover adapters allow them to be installed where niched lights have been previously.



### iAquaLink™ Control

Control your lights anytime, anywhere with iAquaLink. With iAquaLink, you can select colors and settings from virtually any web-connected smart device. To learn more, or to download the app, visit [iAquaLink.com](http://iAquaLink.com).

Jandy Pro Series Nicheless LED lights can also be controlled by any AquaLink® automation system.\*

\* AquaLink RS Firmware Rev R or newer  
AquaLink PDA Firmware Rev 6 or newer

### Jandy Pro Series Underwater Nicheless Lights

	Cord Length		
	50'	100'	150'
<b>WaterColors (10w Max)</b>	JLUC10-50	JLUC10-100	JLUC10-150
<b>White Only (10w Max)</b>	JLUW10-50	JLUW10-100	JLUW10-150
<b>White Only (15w Max)</b>	JLUW15-50	JLUW15-100	JLUW15-150
<b>Blue Only (10w Max)</b>	JLUB10-50	JLUB10-100	JLUB10-150
<b>Blue Only (15w Max)</b>	JLUB15-50	JLUB15-100	JLUB15-150

#### Zodiac Pool Systems, Inc.

2620 Commerce Way, Vista, CA 92081  
1.800.822.7933 | [www.ZodiacPoolSystems.com](http://www.ZodiacPoolSystems.com)

#### Zodiac Pool Systems Canada, Inc.

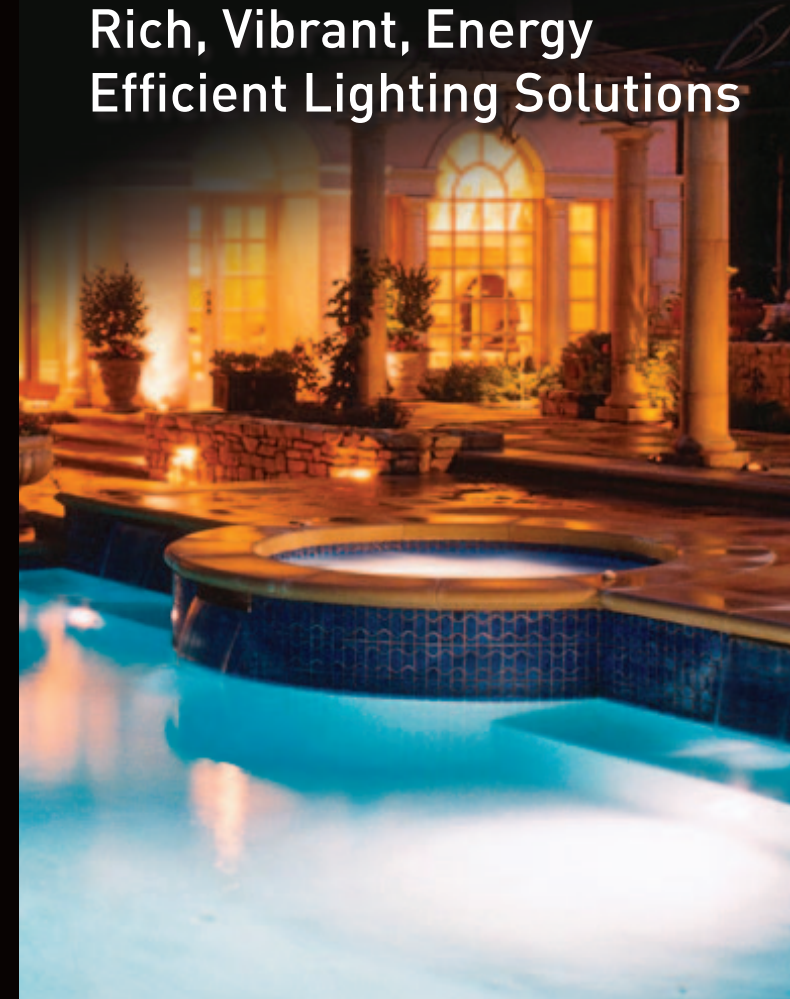
2115 South Service Road West  
Unit #3, Oakville, ON L6L 5W2  
1.888.647.4004 | [www.ZodiacPoolSystems.ca](http://www.ZodiacPoolSystems.ca)

©2013 Zodiac Pool Systems, Inc. SL6501 Rev A 0213  
ZODIAC® is a registered trademark of Zodiac International, S.A.S.U., used under license.  
All other trademarks used herein are the property of their respective owners.



## LED LIGHTS

Rich, Vibrant, Energy Efficient Lighting Solutions





# LED LIGHTS



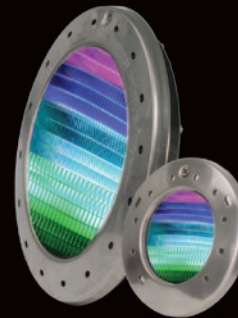
## Nicheless LED

- » 9 vibrant colors & 5 light shows
- » Low voltage (12VAC)
- » 10W & 15W max power draw options
- » 100% non-metallic, no bonding required
- » Mounts directly to 1½" return fitting
- » Pure white light for the most efficient pool illumination (white lights)
- » Deep blue lights create vivid illumination for dramatic effect



## Standard LED

- » 9 colors & 5 light shows
- » 12VAC & 120V options
- » 50w max power draw
- » Stainless steel housings
- » Stainless & plastic niches available
- » ETL® listed for installation in ProNiche & other manufacturers' niches



## Landscape & Environmental

- » Low voltage (12VAC)
- » 10W max power draw
- » Colors sync with the pool



## Accessories

### Pool Light Niche Cover

- » Adapts most pool niches
- » Mount 1 or 2 Nicheless LEDs
- » Colors: White, black, & grey (Light sold separately)



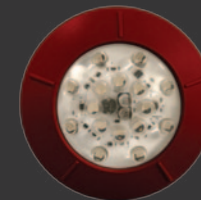
### Spa Light Niche Cover

- » Adapts many spa niches
- » Colors: White, black, & grey



### Trim Rings

- » Useful for landscape & environmental lighting applications
- » Colors: White, black, grey, & red cedar



All Jandy Pro Series LED lights are iAquaLink™ compatible.