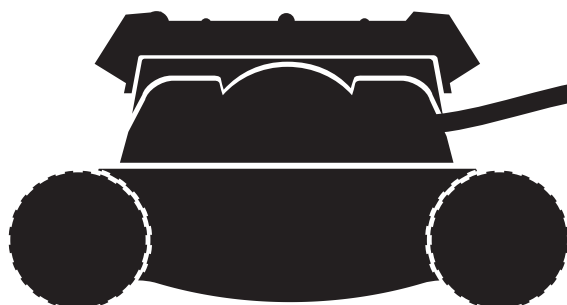
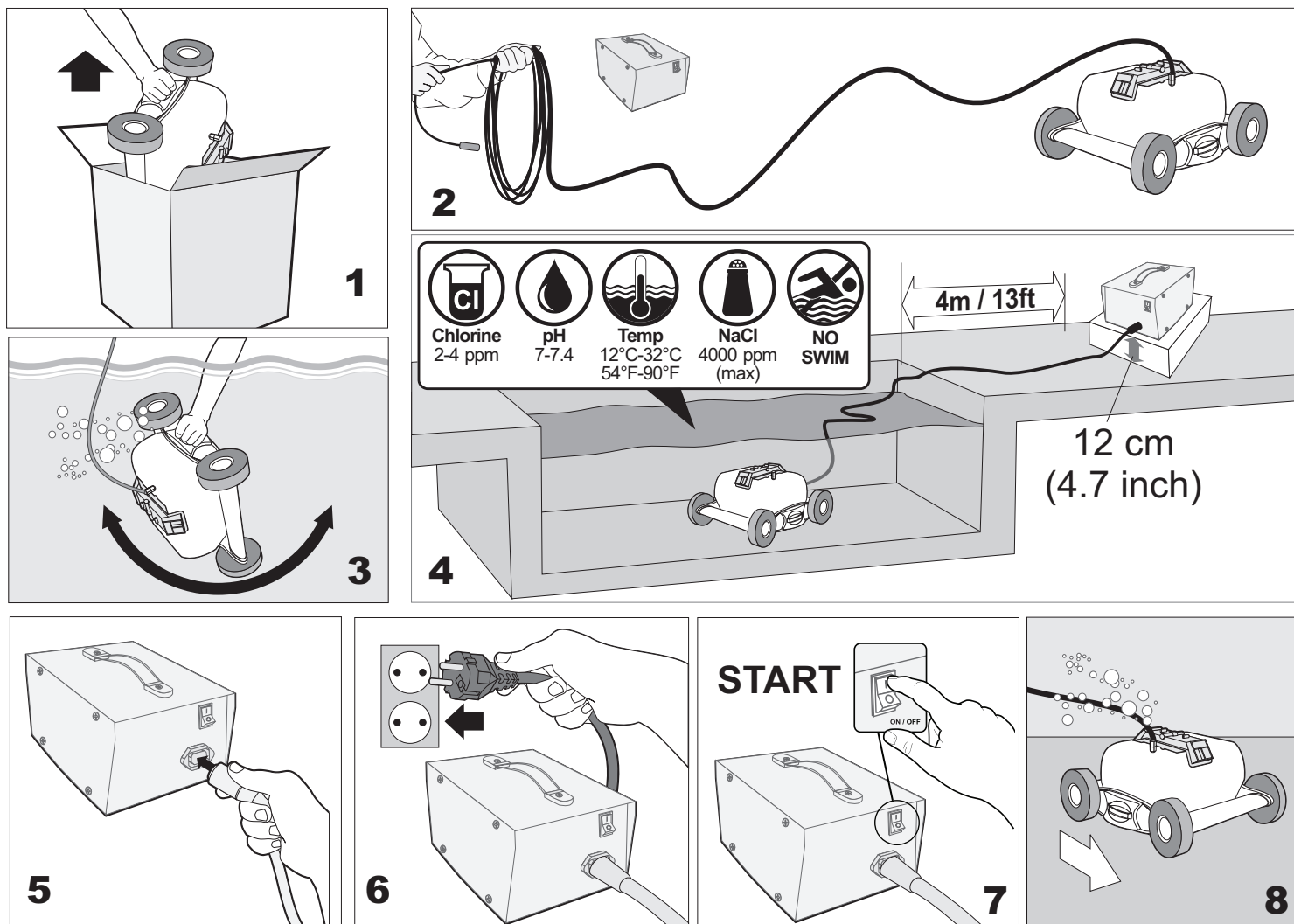


# Commercial Jet Cleaners

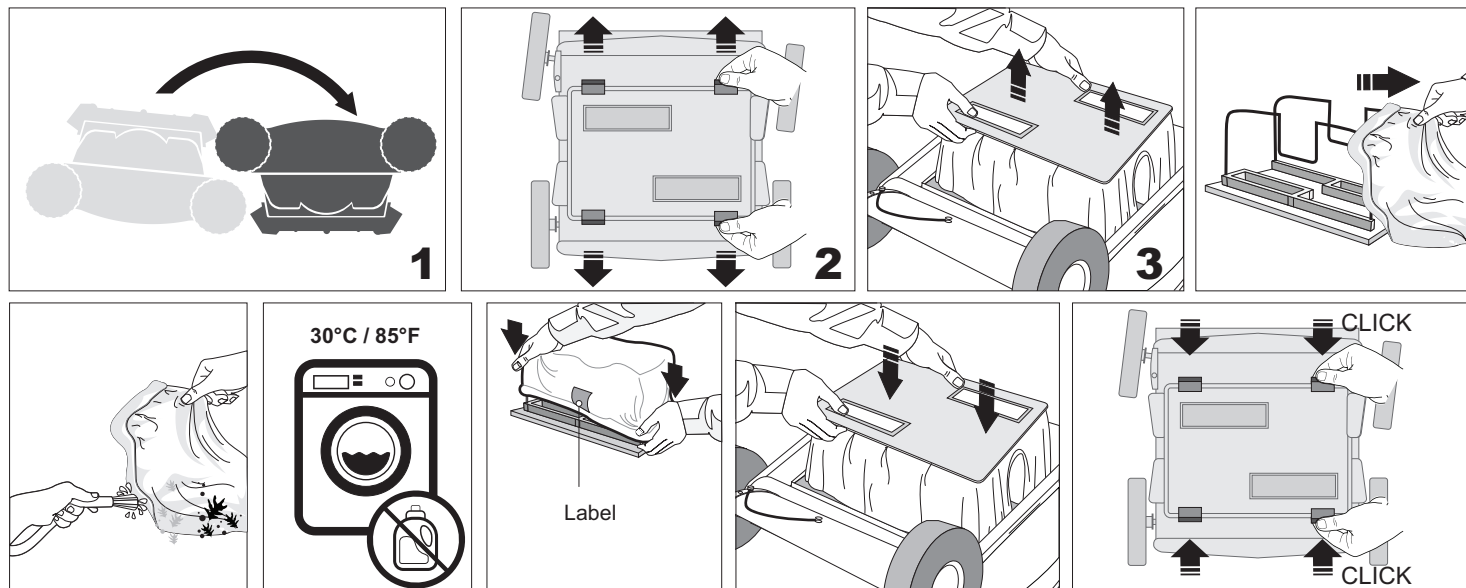
## Operating Instructions



# Quick start guide

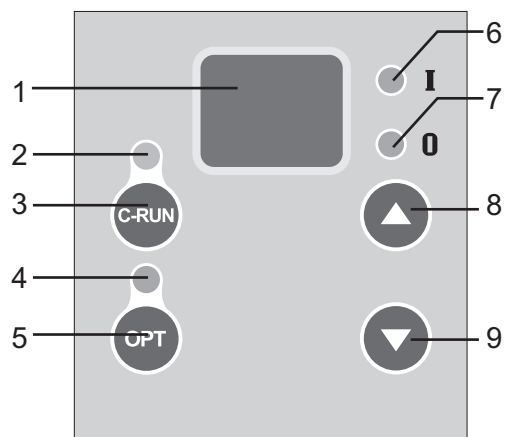


# Cleaning the filter



# 7h Digital timer

(certain models)



- 1 - LED Display
- 2 - Continuous Operation Mode LED
- 3 - Continuous Operation Mode Button
- 4 - Timer Operation Mode LED
- 5 - Timer Operation Mode Button
- 6 - Timer is in operation LED
- 7 - Timer is turned OFF LED
- 8 - Timer selector button (increase value)
- 9 - Timer selector button (decrease value)

## 7 HOUR TIMER OPERATING INSTRUCTIONS

Your pool cleaner is equipped with a 7 hour digital timer. This timer is simple to operate and offers two cleaning modes –Timed and Continuous cleaning. In normal service it will give you years of reliable service. Switch the Power Supply ON. The LED will flash two horizontal bars until you select either Continuous or Timed operation.

**Continuous Operation:** Press the C-RUN button. Both the green LED above the button and the red “ON” LED will illuminate. The cleaner will now clean your pool until you stop it by switching the Power Switch to the “OFF” position.

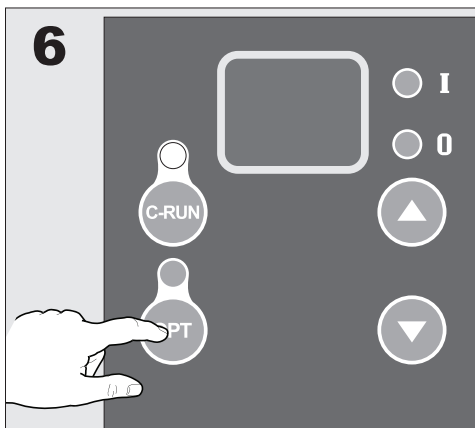
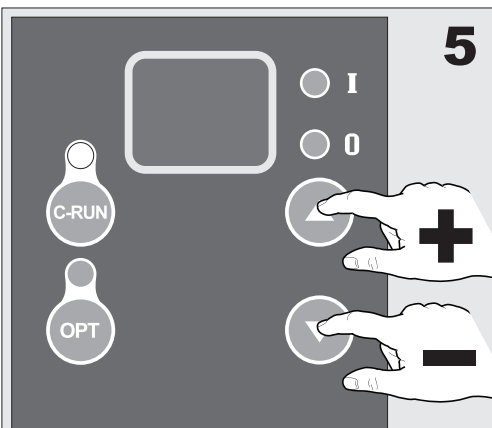
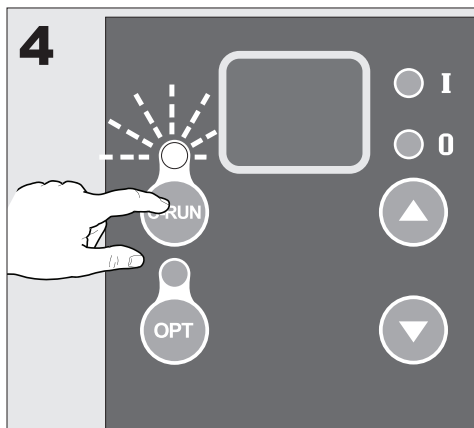
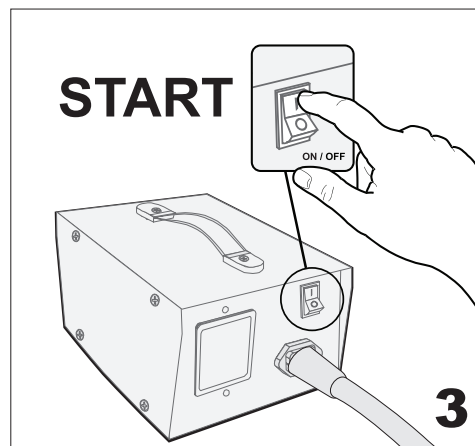
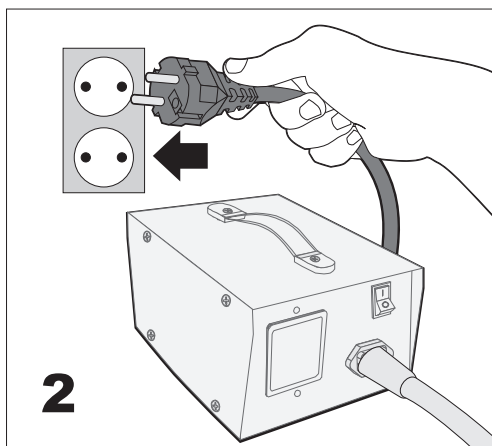
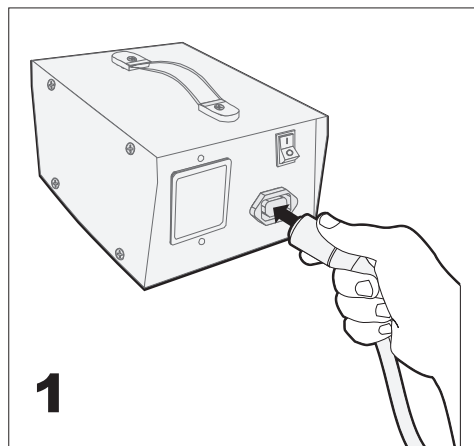
**Timed Operation (step 1):** Press the “UP” arrow button once for each hour of operation you desire (up to 7 hours).

**Timed Operation (step 2):** When you have selected the proper number of hours, press the OPT button to set the timer.

**Changing Time Setting:** After you have set the cleaning time you may add or subtract hours by simply pressing the “UP” or “DOWN” arrow button. This may be done WHILE CLEANER IS OPERATING IN THE POOL.

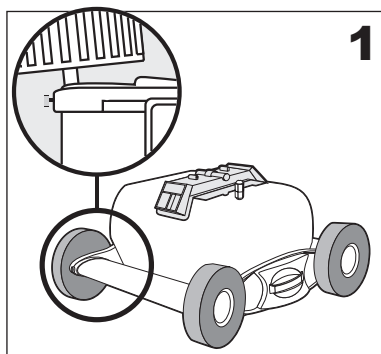
**NOTE:** During Timed Operation the cleaner will shut off for 5 seconds every eight minutes. This is a normal function. No adjustment is required by the operator.

**IMPORTANT – If you shut off the Power Supply this action will cancel the programming you have entered. To resume cleaning you must repeat the procedures listed above.**

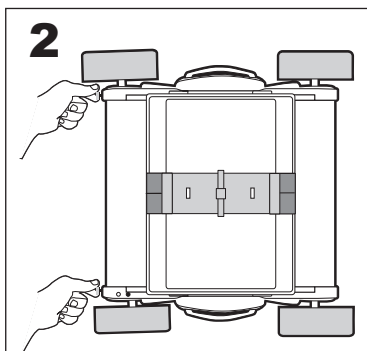


# Cleaning adjustment

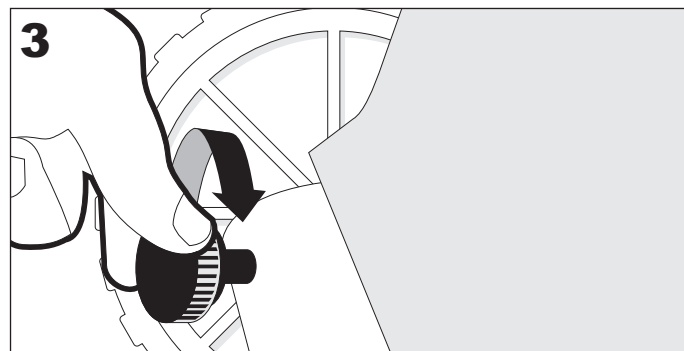
If the unit looks like it is moving in the same area of the pool and does not clean other areas, change the axle set up by adjusting the axle configuration rotating the thumb screws as shown. This will help move the cleaner in a different pattern.



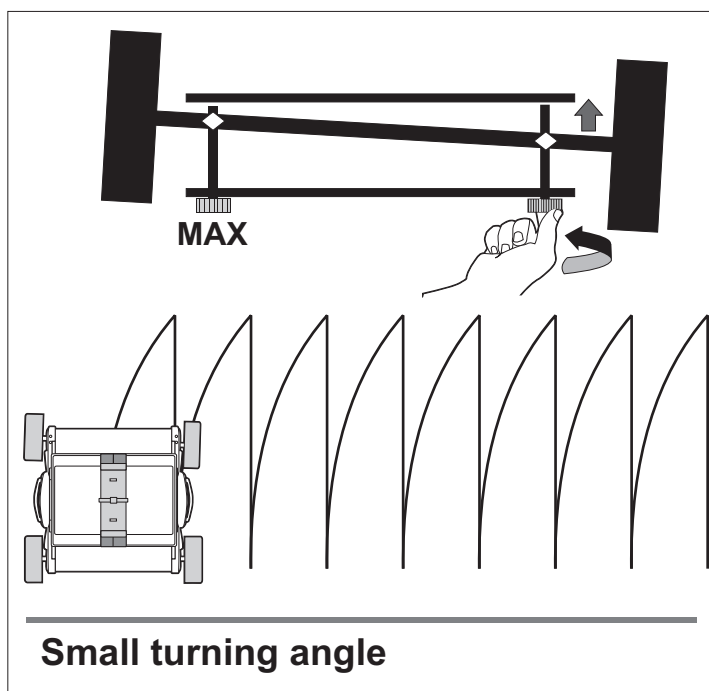
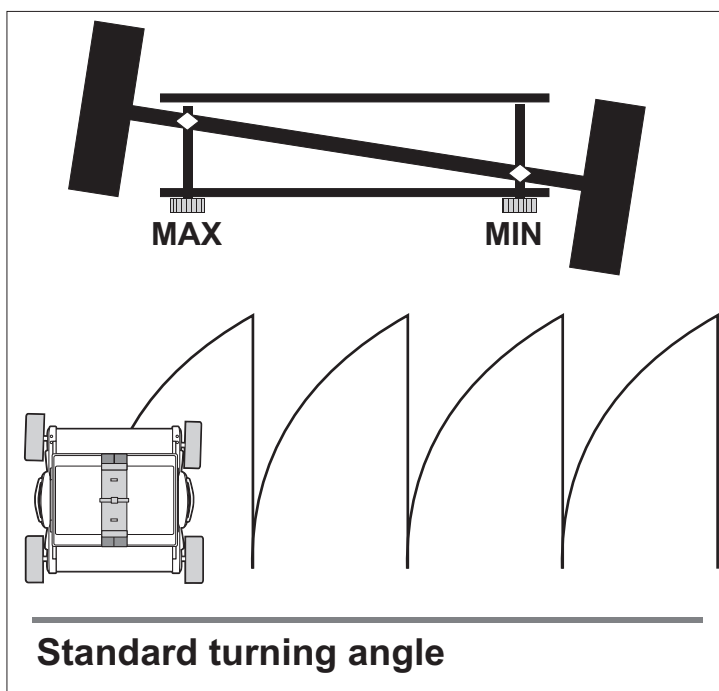
**1**



**2**

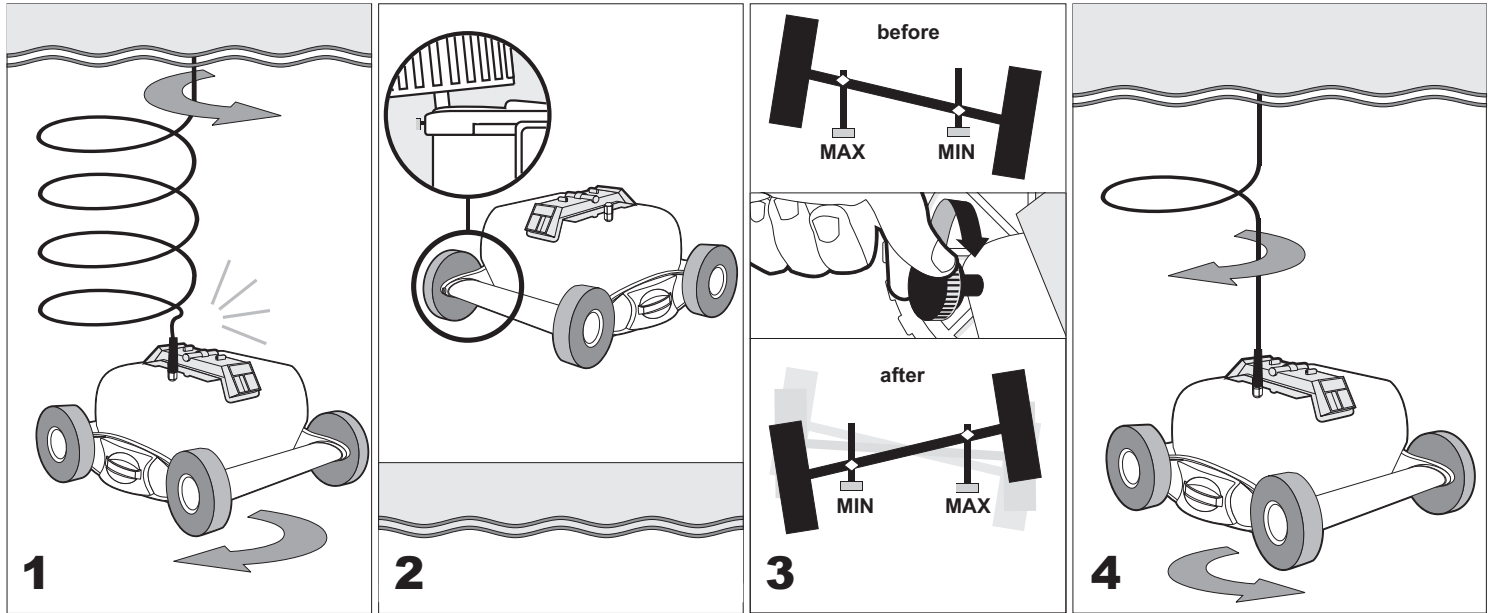


**3**

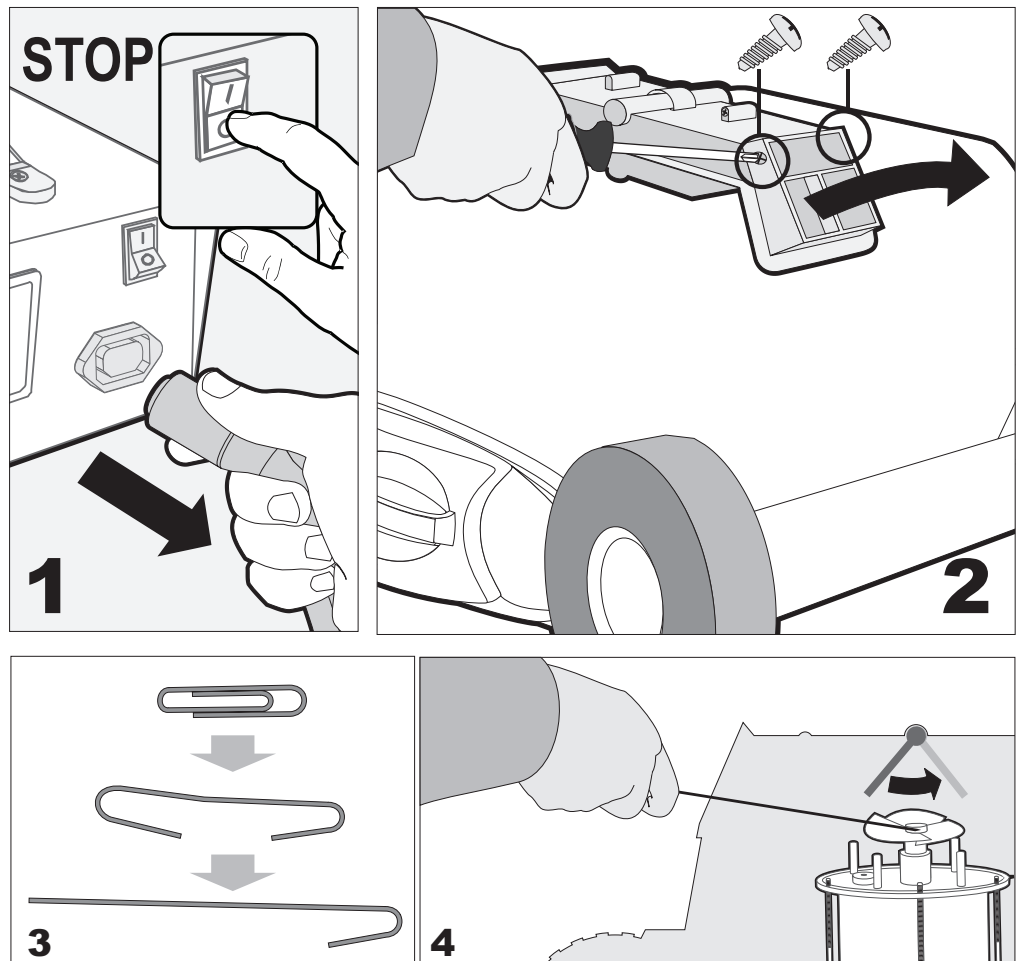


## Detangling the cable

To help prevent cable tangling, it is recommended to periodically change the axle position.



## Cleaning the propeller



Dear Customer,

Thank you for choosing our product to clean your pool. We hope that you will enjoy using your new robot to maintain your swimming pool for years to come.

Before you begin to use your robot, please take a few minutes to carefully read these operating instructions.

Again, thank you for choosing our product.

## IMPORTANT SAFETY INSTRUCTIONS READ AND FOLLOW ALL THE INSTRUCTIONS

**CAUTION:** Do not plug the power supply into a grounded outlet or do not switch the pool cleaner "ON" if it is not fully immersed in water. Operating the cleaner out of water will cause severe damage immediately and will result in loss of warranty.

Allow the cleaner to remain in the pool for 15 to 20 minutes following the end of its cleaning cycle. This will allow the motors to cool adequately. Do not leave the cleaner in the pool all the time. Always remember to turn the power supply "OFF" and unplug it from the power outlet before removing the cleaner from the pool.

**WARNING:** The cleaner must not be used when people are in the water. For use with swimming pool only

### Safety Note

- The unit must be supplied through a residual current device (RCD) having a rated residual operating current not exceeding 30 mA
- The connection to the branch circuit should be consistent with the local and national wiring rules (electrical code).
- If the supply cord is damaged, it must be replaced by the manufacturer's service agent or a qualified and trained person in order to avoid hazards.



This appliance is not intended for use by persons (including children) with reduced physical, sensory or mental capabilities, or lack of experience and knowledge, unless they have been given supervision or instruction concerning use of the appliance by a person responsible for their safety. Children should be supervised to ensure that they do not play with the appliance.



**WARNING:** A Ground Fault Current Interrupter (GFCI-USA) or a Residual Current Device (RCD-EUROPE) must be installed to protect your electric outlet and prevent any possible electric shock.

### IMPORTANT:

Please be sure to always keep your pool cleaner properly stored anywhere between 10 to 40 degrees Celsius (50 to 104 degrees Fahrenheit). This will keep the motors, plastics and seals protected. Failure to comply will result in loss of warranty.

Robot can be used in water with temperatures ranging from 13°C to 35°C (55°F to 95°F). However, the recommended optimal temperature is between 22°C and 32°C (72°F and 90°F)

## SAVE THESE INSTRUCTIONS



## TROUBLESHOOTING

### Moves slowly or doesn't seem to be vacuuming

This is the most common question. The solution is to make sure that the filter bag is thoroughly clean.

Check to see that the suction ports are not clogged or blocked.

### Does not pump water:

Check to see if the electric outlet has power.

Check to see if the cable is plugged into the power supply.

Check the fuse in the Power Supply - if necessary replace it.

Check the cable for possible cuts or damage.

### The Floating Cable is coiled up

Change the axle set-up. Unit is most likely turning too sharply.

### Unit is not sucking up debris

Check to see that you've properly set-up the unit and power supply.

Check to see if the propeller is stuck.

Make sure the filter bag is clean.

### Unit is stuck in the middle of the pool but the unit still pumps out water

Check to see that there is nothing obstructing the cleaner or that the cleaner is not stuck on any loose objects in the pool.

### Unit looks like it is moving in the same area of the pool and does not clean other areas

Change the axle set up by adjusting the axle configuration. This will help move the cleaner in a different direction to clean.

Check your axle configuration.

### Unit does not cover the entire pool

Check to see that the filter bag is thoroughly clean.

Adjust the timing cycle on the power supply (certain models).

Check to see that the axle area is not clogged.

Check your axle configuration.

