

# **SĀFTRON** Pool and Spa

Vinyl Encapsulated Rails and Ladders



**Say "Goodbye" to Rust Forever!**  
**No Bonding/Grounding Required!**

# Features & Benefits

- Grounding / Bonding Not Required
- Industry Standard Designs and Sizes
- Superior Rigidity, Strength and Durability
- Best Choice for Salt Chlorinated Pools
- Always Cool to the Touch
- No Rusting, Scaling, Pitting or Fading
- Impervious to Pool Chemicals
- 5 Year Warranty

## STANDARD COLORS

Colors may not be exactly as illustrated

TAUPE

BEIGE

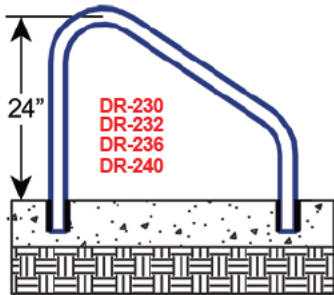
GRAY

WHITE

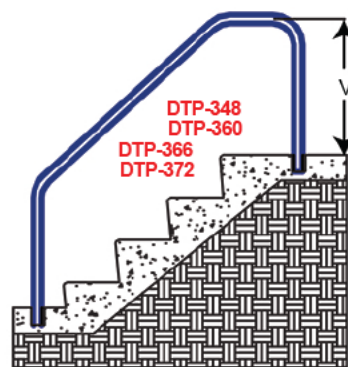
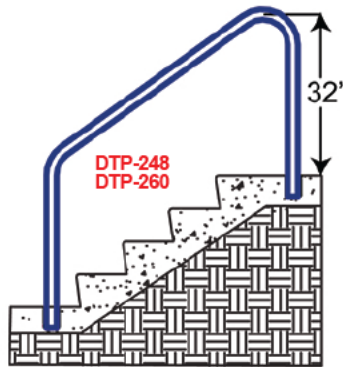
BLACK

Custom Designs, Sizes and Colors Available

### Deck Mounted Handrails



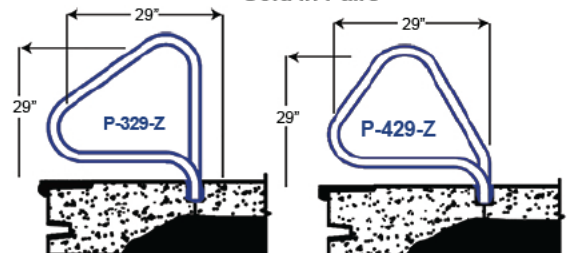
### Deck-to-Pool Handrails (2 & 3 Bend)



Items in red denote fully reinforced pool rails

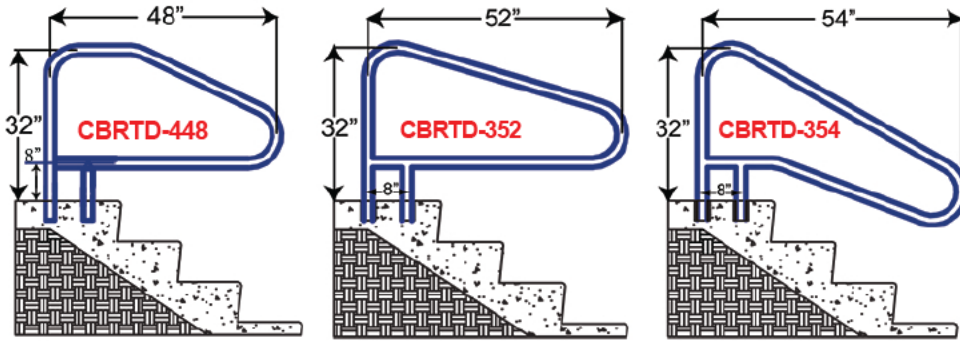
### Pretzel Rails (3 & 4 Bend)

Sold in Pairs



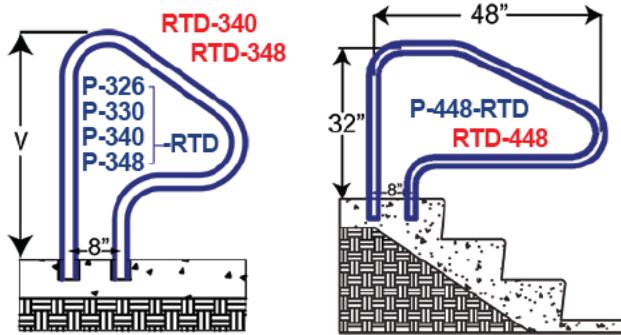
# SÅFTRON Handrails and Grabrails

## Cross Braced Return-to-Deck Rails (3 & 4 Bend)



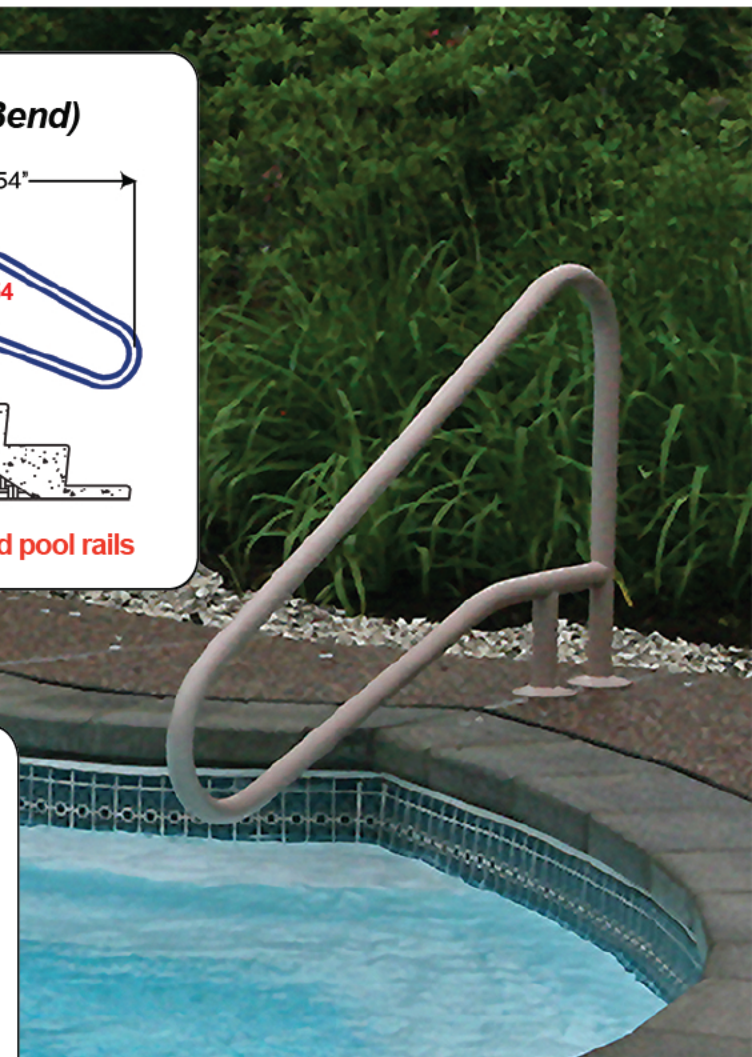
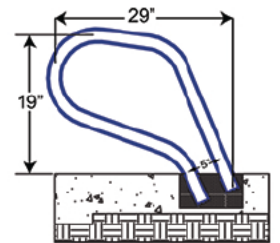
Items in red denote fully reinforced pool rails

## Return-to-Deck Handrails (3 & 4 Bend)



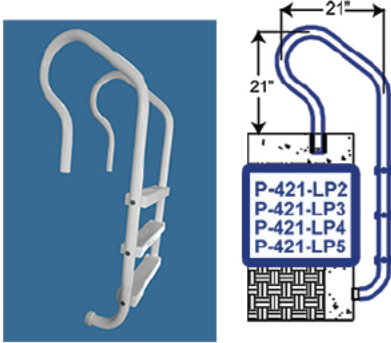
Items in red denote fully reinforced pool rails

## Ring Rail P-329

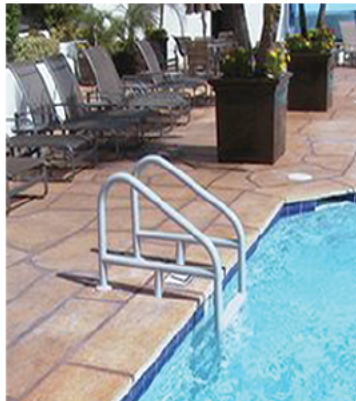
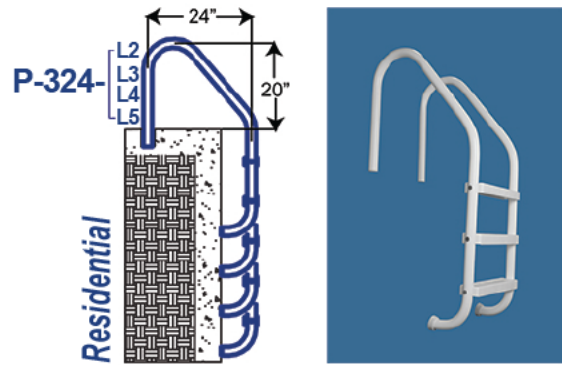


# SÄFTRON Pool Ladders

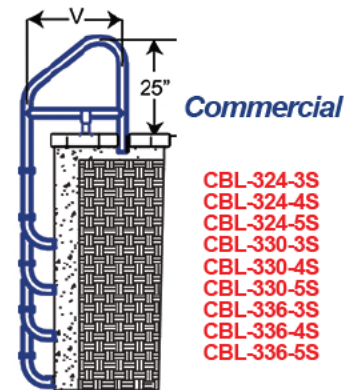
## Elite Series Ladders (2, 3, 4 & 5 Step)



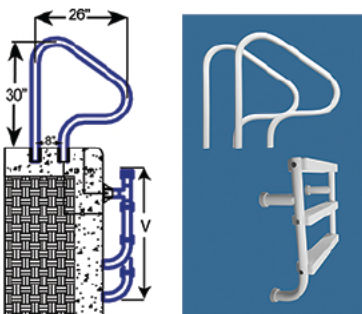
## Residential Ladders (2, 3, 4 & 5 Step)



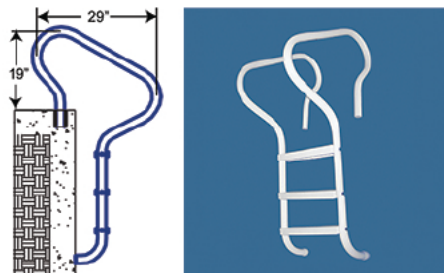
## Cross Braced Ladders (3, 4 & 5 Step)



## Split Ladders (3 & 4 Step) P-326-SL3 / P-326-SL4



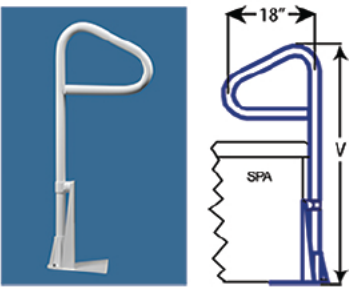
## Camelback Ladder (3 Step) P-429-L3



Items in red denote fully reinforced pool rails

# SÅFTRON Spa Rails

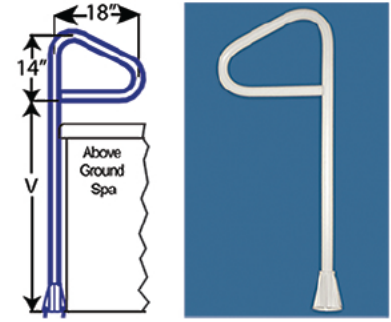
**Under Spa Bracket & Rails**  
SUB-48 / SUB-59



• Includes Lift & Turn Base



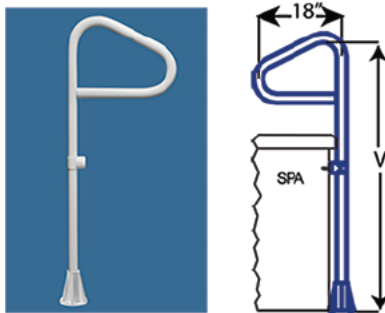
**Spa Floor Rails**  
SF-48 / SF-59



• Includes Lift & Turn Base

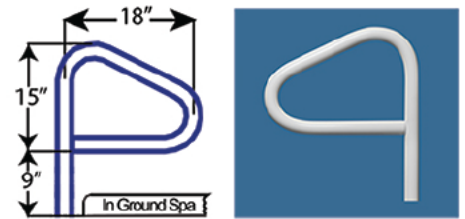
Easy 360° Lift and Turn

**Spa Side & Floor Rails**  
SSF-48 / SSF-59

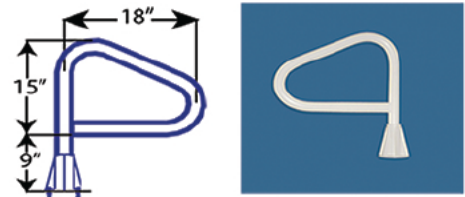


• Includes Lift & Turn Base

**Spa Floor Rail** SF-24



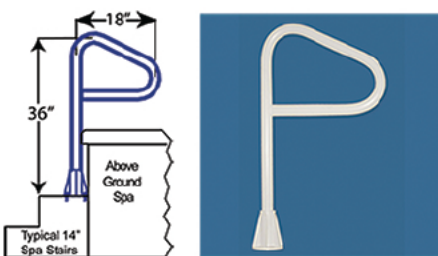
**Spa Floor Rail** SF-24-LT



• Includes Lift & Turn Base

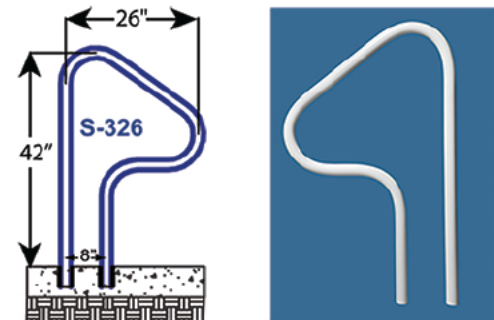
In-Ground Spa Rails

**Spa Step Rail** SS-36

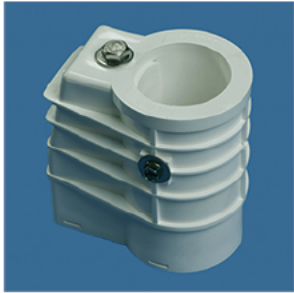


• Includes Lift & Turn Base

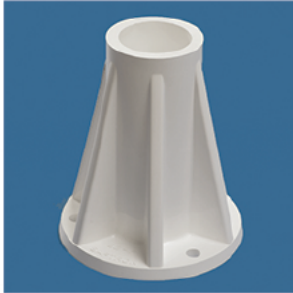
**Double Post Spa Rail** S-326



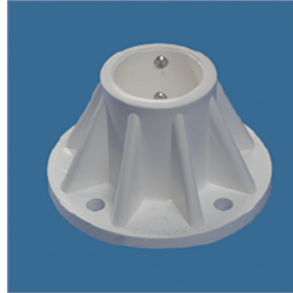
# SĀFTRON Hardware and Safety



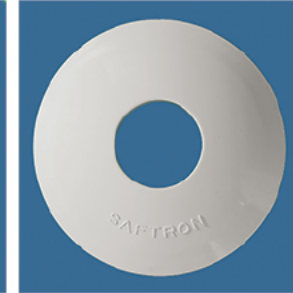
**Non-Corroding  
Anchor Socket  
ANCH-1**



**6" Surface  
Mounting Base  
SB-F**



**3" Split Ladder &  
Mounting Base  
SB-3**

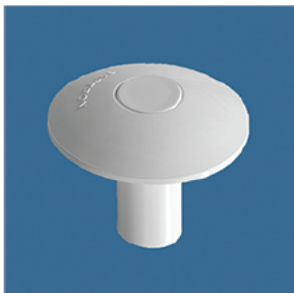


**Escutcheons  
(Pair)  
ESC**



Includes Bubble Level

**Jigs for Ladders &  
Return-to-Deck Rails  
P-JIG-L / P-JIG-RTD**

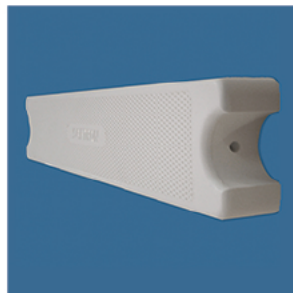


**Anchor Socket  
Covers (Pair)  
ASC**

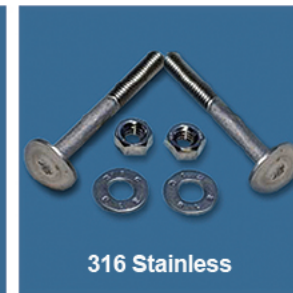


**NEW**

**3 Step Ladder  
Refurbishing Kit  
P-3SLR-KIT**

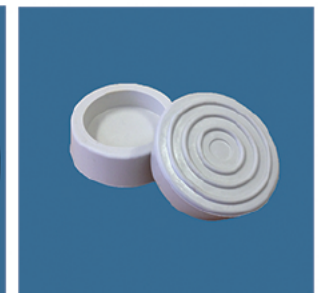


**Single Ladder Step  
(Hardware Seperate)  
P-LS-20**



316 Stainless

**Marine Grade Ladder  
Step Hardware  
P-LS-Hdwr**



**Ladder Bumpers  
(Pair)  
P-BP19**



## SĀFTRON Safety Railing

Designed using the same high impact polymer exterior and reinforced interior. Available in 6 standard colors. Applications include: Water Parks, Theme Parks, Marinas, Stadiums, Hotels and Resorts, Industrials and Equipment Rooms, and matching Pool Deck Railing. Visit [www.SĀFTRON.com](http://www.SĀFTRON.com) for additional information.

# SÄFTRON Accessories

**NEW**



## Volleyball Kits and Replacement Posts

*Volleyball Kits Include Posts, Net, Mounting & Hardware*

**PA-VB-KIT-SM** Kit Mounted Using 6" Surface Bases

**PA-VB-KIT-AM** Kit Mounted Using Anchor Sockets

*Replacement Posts Include Posts, Mounting & Hardware*

**PA-VBP-SM** Posts Mounted Using 6" Surface Bases

**PA-VBP-AM** Posts Mounted Using Anchor Sockets

Items in red denote fully reinforced posts

## Safety / Exercise Bars

### Towel Bars

24" Bar  
**SX-24**

36" Bar  
**SX-36**



09" Bar **X-09 (Pr)**

24" Bar **X-24**

36" Bar **X-36**

48" Bar **X-48**

60" Bar **X-60**

72" Bar **X-72**

X-09 X-24 X-36 X-48



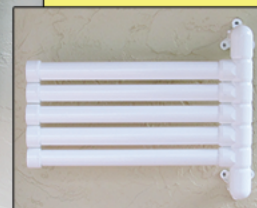
X-60 X-72



### 5 Arm Wall Mounted Towel Rack

Includes Mounting Hardware

**PA-MTR-5**



	W	H
<b>Deck Mounted Handrails</b>		
DR-230	30"	24"
DR-232	32"	24"
DR-236	36"	24"
DR-240	40"	24"

	W	H
<b>Deck-to-Pool Rails</b>		
DTP-248	48"	32"
DTP-260	60"	32"
DTP-348	48"	32"
DTP-360	60"	32"
DTP-366	66"	32"
DTP-372	72"	32"

	W	H
<b>Ring Rail &amp; Preztel Rails</b>		
P-329	29"	19"
P-329-Z	29"	29"
P-429-Z	29"	29"

	W	H
<b>Return-to-Deck Hand &amp; Grab Rails</b>		
P-326-RTD	26"	30"
P-330-RTD	30"	30"
P-340-RTD	40"	32"
P-348-RTD	48"	32"
P-448-RTD	48"	32"
RTD-340	40"	32"
RTD-348	48"	32"
RTD-448	48"	32"

	W	H
<b>Return-to-Deck Cross Braced Handrails</b>		
CBRTD-448	48"	32"
CBRTD-352	52"	32"
CBRTD-354	54"	32"

	W	H
<b>Pool Ladders</b>		
P-324-L2	24"	44"
P-324-L3	24"	53"
P-324-L4	24"	62"
P-324-L5	24"	72"
P-529-L3	29"	55"
P-326-SL3	7"	26"
P-326-SL4	7"	35"
P-421-LP2	21"	43"
P-421-LP3	21"	53"
P-421-LP4	21"	63"
P-421-LP5	21"	73"

	W	H
<b>Cross Braced Ladders</b>		
CBL-324-3S	24"	67"
CBL-324-4S	24"	79"
CBL-324-5S	24"	91"
CBL-330-3S	30"	67"
CBL-330-4S	30"	79"
CBL-330-5S	30"	91"
CBL-336-3S	36"	67"
CBL-336-4S	36"	79"
CBL-336-5S	36"	91"

	W	H
<b>Spa Handrails for In-Ground Spas</b>		
S-326	26"	42"
SF-24	18"	24"
SF-24-LT	22"	24"

	W	H
<b>Spa Handrails for Above-Ground Spas</b>		
SS-36	18"	36"
SF-48	18"	48"
SF-59	18"	59"
SSF-48	18"	48"
SSF-59	18"	59"
SUB-48	18"	48"
SUB-59	18"	59"

	W	H
<b>Hardware &amp; Replacement</b>		
P-3SLR-KIT	See Below	See Below
P-LS-20	3.75"	20" Long
P-LS-20-CS		
P-LS-Hdwr	N/A	N/A
P-LS-Hdwr-CS		
ESC	6" Diam.	.75"
ESC-CS		
P-BP19	2.7" OD	1.0"
P-BP19-CS		

	W	H
<b>Installation Hardware &amp; Tools</b>		
ANCH-1	2.75" OD	4.25" OD
ANCH-CS		
ANCH-WBN-CS	N/A	N/A
P-JIG-L	20"	8"
P-JIG-RTD	8"	16"
SB-F	5.2"	6"
SB-F-CS		
SB-3	5.2"	3"
SB-3-CS		

	W	H
<b>Accessories</b>		
PS-ST	11"	5.5"
SX-24	24"	3" - 5"
SX-36	36"	3" - 5"
PA-MTR-5	17"	13"
PA-VB-KIT-SM	N/A	48"
PA-VB-KIT-AM	N/A	52"
PA-VBP-SM	N/A	48"
PA-VBP-AM	N/A	52"
ASC	5.75" Diam.	.75"
ASC-CS		
X-09 (Pr)	3" - 5"	9"
X-24	3" - 5"	24"
X-36	3" - 5"	36"
X-48	3" - 5"	48"
X-60	3" - 5"	60"
X-72	3" - 5"	72"
X-72	3" - 5"	72"

All pool rails (except P-329), ladders, spa models S-326 & SF-24, and volleyball posts mounted with anchor sockets include escutcheons.