



Installation and Operation Manual



Levolor[®] II by Jandy Electronic Water Leveler Model K-2100

WARNING

FOR YOUR SAFETY - This product must be installed and serviced by a professional pool/spa service technician. The procedures in this manual must be followed exactly. Failure to follow warning notices and instructions may result in property damage, serious injury, or death. Improper installation or operation will void the warranty.

Table of Contents

Section 1. Safety Information 4

Section 2. System Description 5

2.1 Electrical Specifications 5

2.2 Schematic 6

Section 3. Installation Instructions 7

3.1 Materials and Tools 7

3.2 Installing the Control Box 7

3.3 Changing Wiring for 110 Volt Operation 8

3.4 Grounding 8

3.5 Installing the Valve and Relay 9

3.6 Installing the Sensor 11

3.7 Static Pipe Installation in a New Fountain 12

Section 4. Operation 13

4.1 Controller Lights 13

4.2 Fill Safety Lockout Mode 13

4.3 Change Fill Time for Safety Lockout Mode 14

Section 5. Troubleshooting 15

5.1 Observations at Job Site 15

5.2 Test Operation of Control Unit 15

5.3 Fill Valve Will Not Turn OFF 17

5.4 Fill Valve Will Not Turn ON 18

Section 1. Safety Information

IMPORTANT SAFETY INSTRUCTIONS PERTAINING TO A RISK OF PROPERTY DAMAGE OR INJURY TO PERSONS READ AND FOLLOW ALL INSTRUCTIONS

When installing and using this equipment, basic safety precautions should always be observed, including the following:

WARNING

FOR YOUR SAFETY. This product must be installed and serviced by a professional service technician, qualified in pool/spa installation and maintenance. Improper installation or operation could cause serious injury, property damage, or death. Improper installation or operation will void the warranty.

WARNING

Before installing this product, read and follow all warning notices and instructions accompanying it. Failure to follow safety warnings and instructions could result in severe injury, death, or property damage.

WARNING

To reduce the risk of injury, do not permit children to use this product unless they are closely supervised at all times.

WARNING

Risk of electric shock! Install the control box at least five (5) feet (152.4cm) from the inside wall of the pool and/or hot tub using non-metallic plumbing. Canadian installations must be at least three (3) meters from the water. Children should not use spas or hot tubs without adult supervision. Do not use spas or hot tubs unless all suction guards are installed to prevent body and hair entrapment. People using medications and/or having an adverse medical history should consult a physician before using a spa or hot tub.

CAUTION

Sensor wires must be continuous and not spliced. Solder all low voltage wire connections when possible and always use grease-filled wire nuts on low voltage connections.



ATTENTION INSTALLER: Install to provide drainage of compartment for electrical components.



ATTENTION INSTALLER: This manual contains important information about the installation, operation and safe use of this product. This information should be given to the owner/operator of this equipment.

SAVE THESE INSTRUCTIONS

Section 2. System Description

Levolor II by Jandy Model K-2100 is a computer-controlled fill device that detects low water conditions.

It can be used in any situation where a consistent liquid level is desired and the low water condition can be detected and acted upon. It is used to fill fountains and to circulate water in cooling towers, ponds, reservoirs, and storage tanks.

The K-2100 kit includes a sensor, remote sensor housing, control box and solenoid valve. For details about the materials in the kit and a list of additional materials needed to install the K-2100, refer to *Section 3.1, Materials and Tools*.

Sensor

The sensor has three (3) probes: one (1) short probe to measure the minimum operating level of the water, one (1) long probe to measure the low water cutoff level, and one (1) long common probe. The long probes come in 4", 18", and 30" lengths.

The sensor housing is a slip type housing that glues to a 1" coupling.

NOTE There is an optional threaded-type sensor for a threaded fitting.

Depending on the model, the sensor comes with 50 to 500 feet of wire at the top and three (3) stainless steel contacts at the bottom. The excess wire can be cut off after the installation has been completed.

Control Box

The control box has five (5) LED lights:

- Power On
- Sensor
- Fill
- Low Water Sensor
- Low Water Cutoff

For details about the functions of the LED lights, refer to *Section 4.1, Controller Lights*.

The control box is factory wired for 220 volt operation, but can optionally be rewired for 110 volt operation. See *Section 3.3, Changing Wiring for 110 Volt Operation*.

Valve

The K-2100 requires one (1) 24VAC solenoid valve. The Jandy-supplied valve (Part No. SOL100) has a pressure rating that cannot exceed 125 PSI.

2.1 Electrical Specifications

Input: 110VAC, 50/60 HZ, 0.5 AMPS
220VAC, 50/60 HZ, 0.5 AMPS

Valve Output: 24VAC@ 1 AMP

Relay Output: 24VAC@ 1 AMP

CAUTION

Model K-2100 is factory wired for 220VAC service. If the available electrical service is 110VAC, the power supply wiring must be changed to operate on 110VAC, as shown in Figures 3 and 4.

2.2 Schematic

This section contains a schematic for the K-2100.

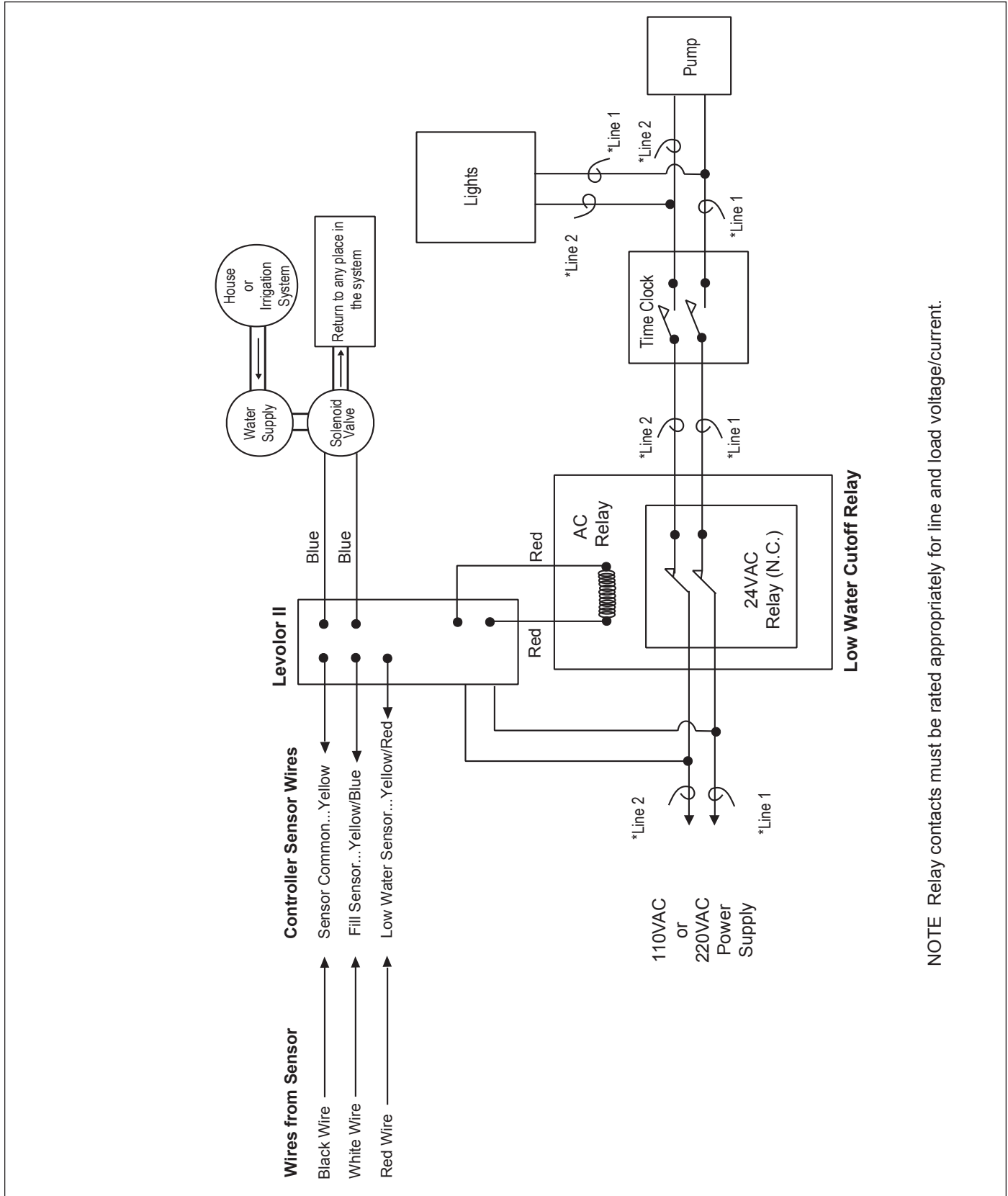


Figure 1. K-2100 Schematic

Section 3. Installation Instructions

3.1 Materials and Tools

Installation Materials Furnished for Levolor II, Model K-2100	Qty
Three-probe Sensor with Wire	1
24VAC Solenoid Valve	1
1" Coupler	1
Control Box (K-2100)	1
Remote Sensor Housing	1
Hardware Kit	1
Grease-Filled Wire Nuts for Valve	2 per kit
Screws	4 per kit
Anchors	4 per kit
Owner's Manual - Warranty Information	1

Additional Materials Needed for Installation
DPST (Dual Pole Single Throw) 24VAC Relay with Contacts Properly Rated for Pump Selected
Anti-Siphon Valve*
2-Conductor 18-Gauge Solid-Core Burial Cable
Wire-Nut Connectors for the Sensor, Relay, and Power Connections.

*The anti-siphon valve is not necessary if the connection is made from the irrigation system.

Open the box and check to see that it contains the contents listed above. If it does not, contact your Jandy dealer or Zodiac Pool Systems, Inc. technical support at 1 (800)-822-7933.

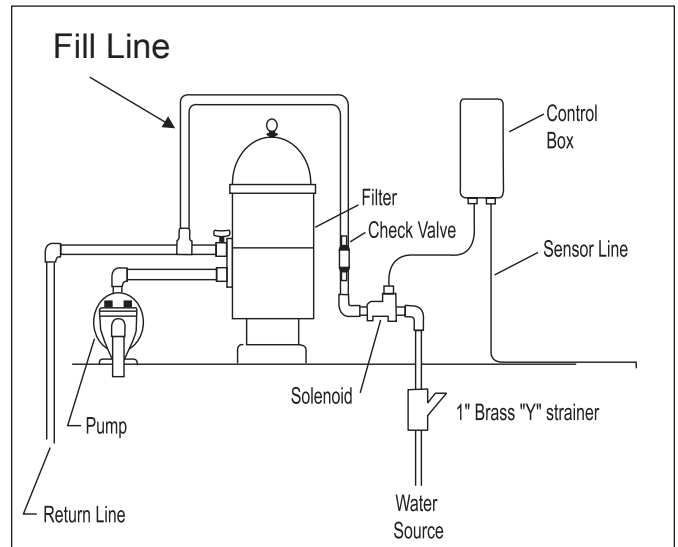


Figure 2. K-2100 Installation

3.2 Installing the Control Box

1. Mount the control box to the wall near the pump and filter. See Figure 2. Do not install the control box within 10 feet (3 meters) of the pool edges.
2. Mount the control box at eye level. Leave sufficient clearance on all sides of the chassis backplate.
3. Check the source voltage. (The unit is factory wired for 220 volt operation.) To modify the wiring for 110 volt operation, see *Section 3.3, Changing Wiring for 110 Volt Operation*.
4. For 220 volt operation, connect the black wire to line 1 and connect the black wire with the yellow stripe to line 2. See Figure 3.

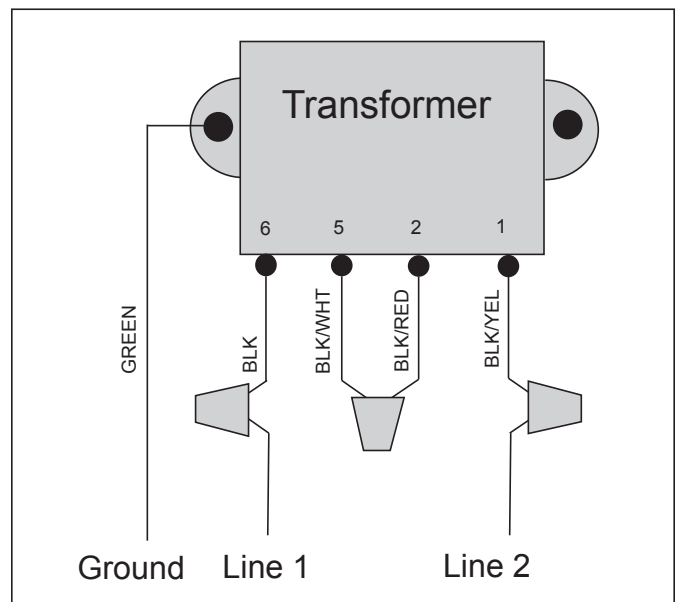


Figure 3. Factory Wiring for 220 Volt Operation

3.3 Changing Wiring for 110 Volt Operation

⚠ WARNING

Potentially high voltages in the Levolor control box can create dangerous electrical hazards, possibly causing death, serious injury or property damage. Turn off the power at the main circuit breaker providing power to the control box to disconnect the control box from the system. To properly and safely wire the system, be sure to carefully follow the applicable requirements of the National Electrical Code (NEC), NFPA 70 or the Canadian Electrical Code (CEC), CSA C22.1. All applicable local installation codes must also be adhered to.

Refer to Figures 3 and 4 and do the following:

1. Cut the splice cap connecting the black/white and the black/red wires. See Figure 3.
2. Connect the black/red wire with the black wire and connect to the line side of power. See Figure 4.
3. Connect the black/white wire with the black/yellow wire and connect to the neutral side of power. See Figure 4.

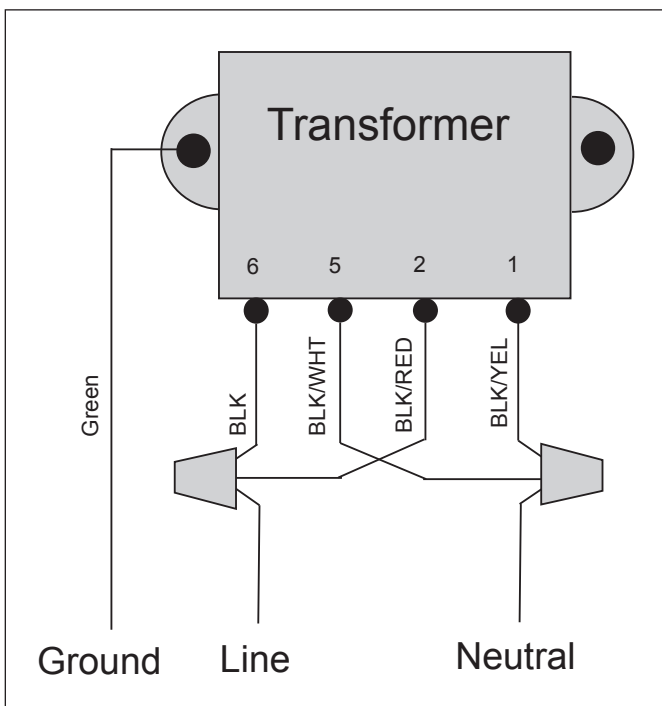


Figure 4. Modified Wiring for 110 Volt Operation

3.4 Grounding

Connect the green ground wire marked \oplus to the grounding terminal of your electrical service or supply panel with a continuous copper conductor having green insulation.

The copper conductor must be equivalent in size to the circuit conductors supplying this equipment, but no smaller than No. 12 AWG (3.3mm).

Refer to your local codes for the acceptable grounding wire gauge.

3.5 Installing the Valve and Relay

NOTE Install the valve with the directional water flow arrow pointing in the appropriate direction. The directional water flow arrow is located on the inlet side of the valve.

A 24VAC solenoid valve will provide water from a supply line to the fountain (or other environment: cooling tower, pond, reservoir, storage tank, etc.).

You can install the supply line either before or after the filter at the equipment pad or on a dedicated line back to the fountain.

Zodiac recommends a minimum 1" valve and an anti-siphon valve, which provides inexpensive insurance against accidental draining of the fountain (or other environment).

Always use an in-line strainer, which can be purchased from Zodiac.

1. Connect the 24VAC water solenoid valve to the 18-gauge solid-core burial cable using grease-filled wire nuts.
2. Connect the wires from the Fill Valve to the blue wires in the control box using wire nuts. See Figure 7, page 10.
3. Connect the wires from the Low Water Cutoff AC Relay Coil to the red wires in the control box using wire nuts. See Figure 7, page 10.
4. Turn the flow control knob (+) on the top of the valve (See Figure 5) to set the flow rate to your specifications. (The rate can be set up to 30 GPM.)
5. Put the manual ON/OFF lever, located just below the solenoid, in the OFF position, so it can only be opened by the electronic water Levolor. See Figure 6.

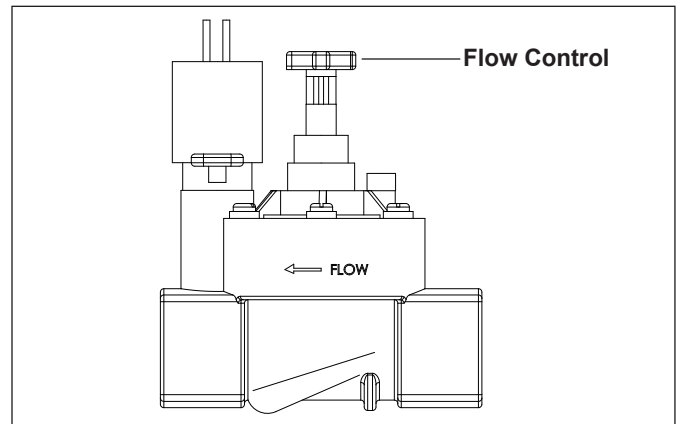


Figure 5. Valve Flow Controller

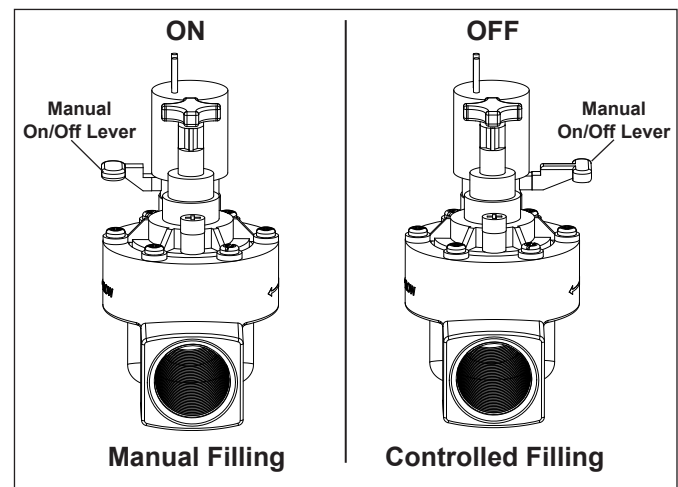


Figure 6. Manual Valve Lever

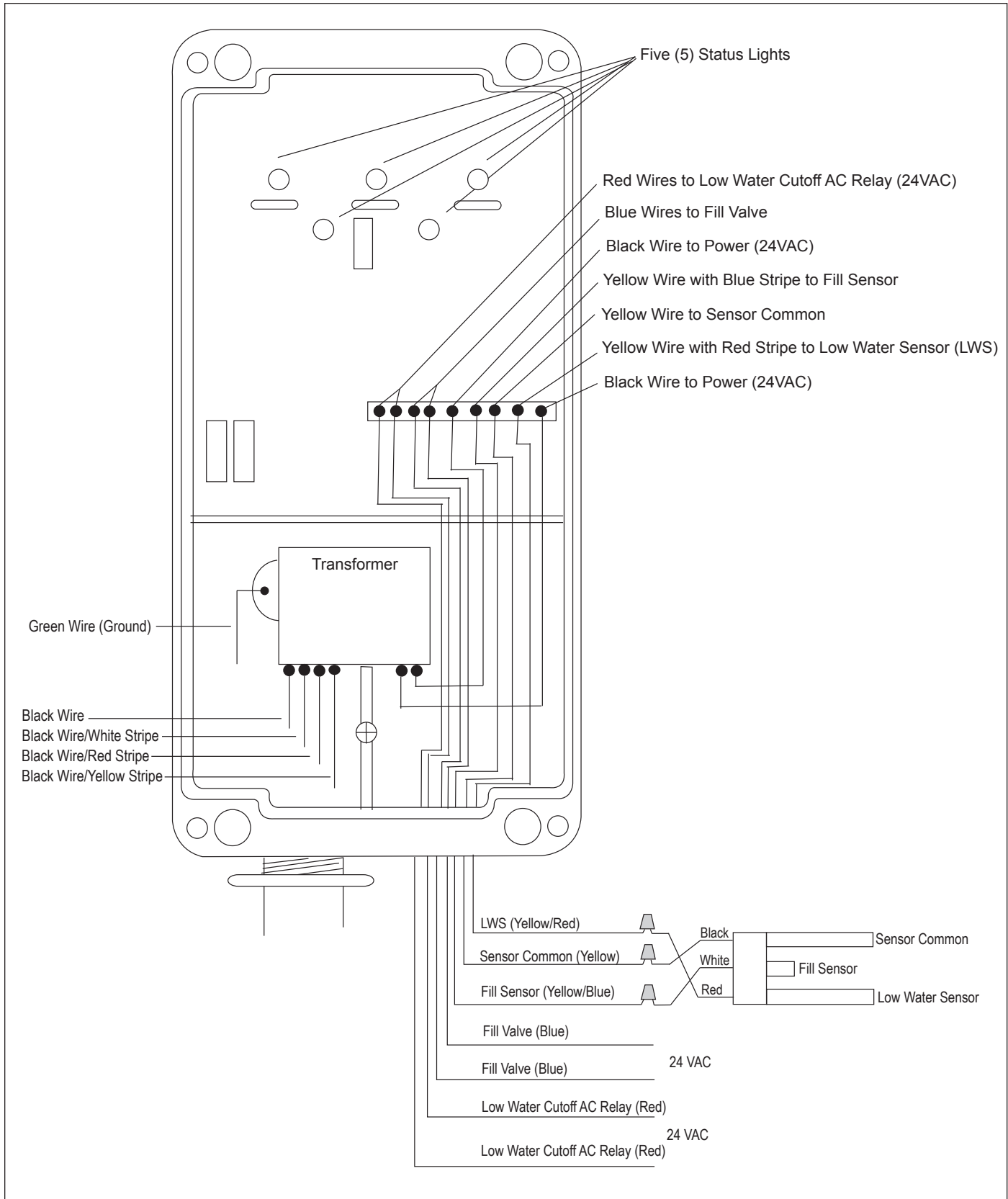


Figure 7. Control Box Wiring

3.6 Installing the Sensor

NOTE Sensor wires must be continuous and not spliced. Solder all low voltage wire connections when possible and always use grease-filled wire nuts on low voltage connections.

NOTE When mounting a slip style sensor in a static pipe, glue 1" fittings with 793 IPS brand ABS/PVC glue. Do not glue 2" fittings.

1. Mount the slip sensor vertically in a static pipe. See Figure 8.
2. Connect the sensor wires as follows. Refer to Figure 7 and Table 1, shown below.
 - a. Connect the black wire from the long Sensor Common probe to the yellow common wire from the control box using a wire nut.
 - b. Connect the white wire from the short Fill Sensor probe to the yellow wire with the blue stripe from the control box using a wire nut.
 - c. Connect the red wire from the long Low Water Sensor probe to the yellow wire with the red stripe from the control box using a wire nut.

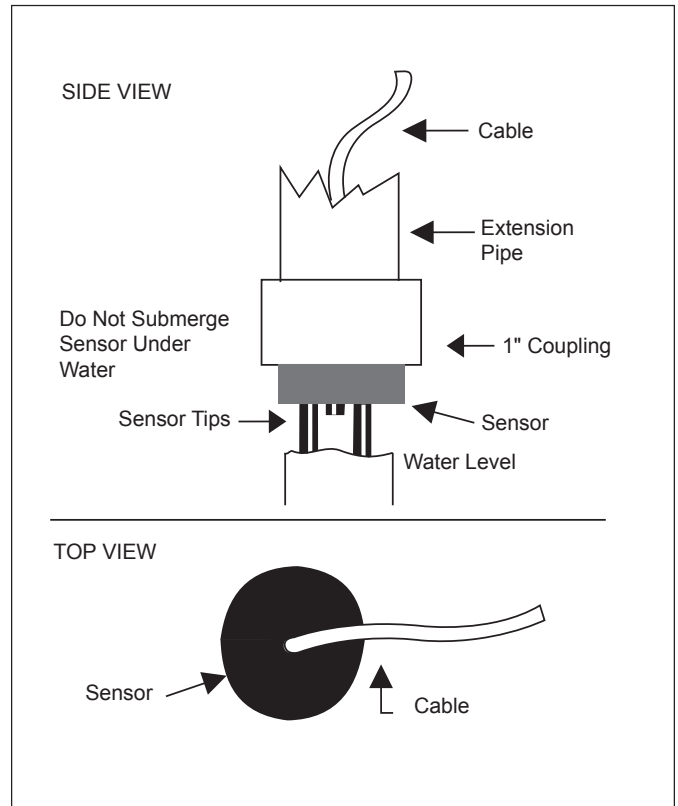


Figure 8. Slip Sensor on Static Pipe

Table 1. Sensor Wire Connections

Sensor Wires	Control Box Wires
Black (Sensor Common Probe)	Yellow
White (Fill Sensor Probe)	Yellow/Blue Stripe
Red (Low Water Sensor Probe)	Yellow/Red Stripe

3.7 Static Pipe Installation in a New Fountain

Figure 9 shows a static pipe installation in a new fountain (or other environment: cooling tower, pond, reservoir, storage tank, etc.).

Please note that Zodiac does not supply the Inner Sleeve and Deck Lid Housing Assembly, the Brass Lid, or Drain Cover.

You can construct an Inner Sleeve using a piece of 6" or 8" PVC pipe to make a sleeve that fits the lid and collar you are using.

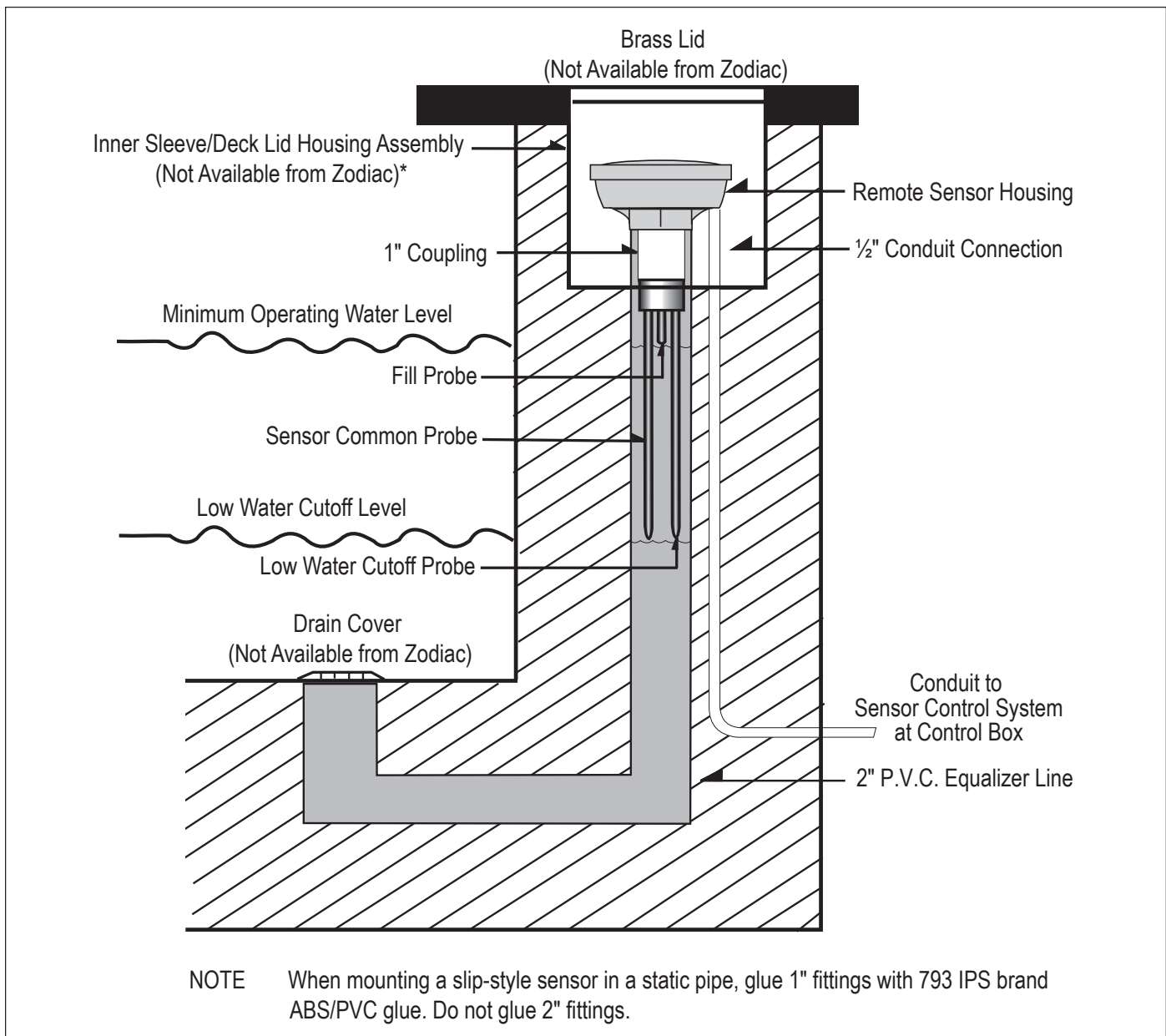


Figure 9. Static Pipe Installation

* To make the Inner Sleeve, use a piece of 6" or 8" PVC pipe to make a sleeve that fits the lid and collar you are using.

Section 4. Operation

4.1 Controller Lights

The controller has five (5) lights. See Figure 10 and Table 2, LED Indicators.

The Power light turns green when the power is on. The Sensor light turns yellow when water is not touching the Fill Sensor probe.

Then the Fill light turns green, indicating that the valve is operational and filling the fountain (or circulating water in another application). The Fill light turns red when the unit enters Safety Lockout Mode.

The Low Water Sensor light turns yellow when the Low Water Sensor probe is not touching the water. Then the Low Water Cutoff light turns green, indicating that the pump is being shut off.

4.2 Fill Safety Lockout Mode

The Levolor is equipped with a Fill Safety Lockout Mode. This means that if the Fill Sensor probe has not been touched by water within the pre-set Fill time period, the Levolor activates the Safety Lockout, turning the valve off for 24 hours. During Safety Lockout, the Fill light turns from green to red.

The pre-set factory Fill time is 20 minutes. To change it, see Section 4.3, *Change Fill Time for Safety Lockout Mode*.

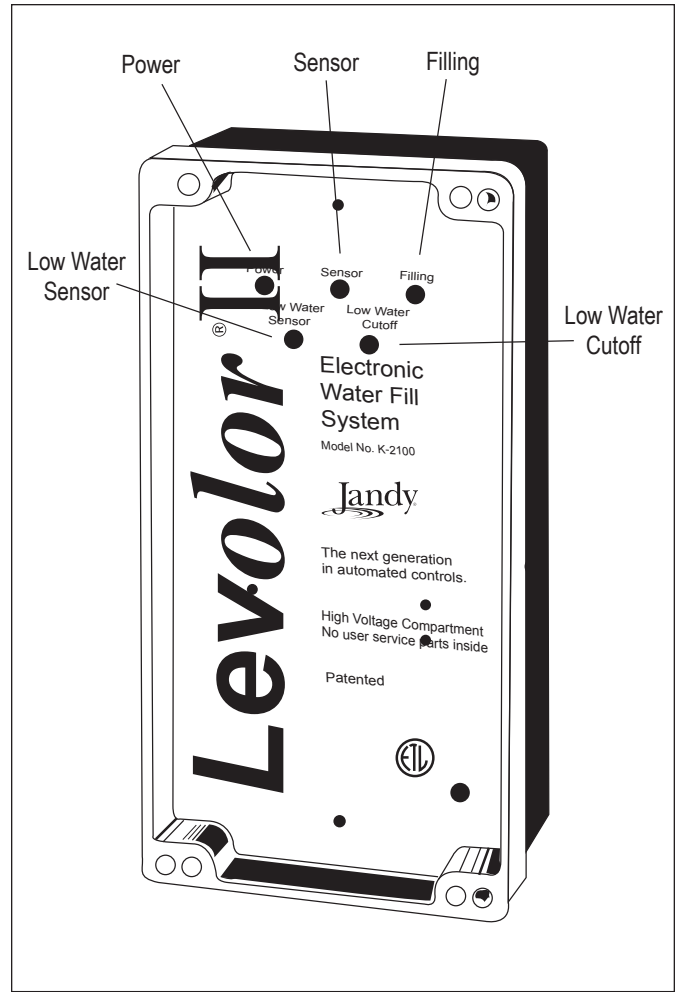


Figure 10. Controller Lights

Table 2. LED Indicators

LED	Function	Color	Operating Mode	Delay to Turn Function ON	Delay to Turn Function OFF
Power	Turn Power ON	Green	Power is ON	None	None
Sensor	Detect Low Water	Yellow	Water is Low	None	None
Filling	Fill Fountain (or Circulate Water in Other Application)	Green	Fill Valve is ON	20 Seconds after Sensor Turns ON	20 Seconds after Sensor Turns OFF
	Fill Safety Lockout	Red	Fill Valve is OFF	20, 40 or 60 Minutes	24 Hours
Low Water Sensor	Detect Very Low Water	Yellow	Water is Very Low	None	None
Low Water Cutoff	Turn Pump OFF	Green	Pump is OFF	20 Sec, 1 Minute or 5 Minutes	None

4.3 Change Fill Time for Safety Lockout Mode

To change the pre-set factory Fill time, turn off the power to the control box, open it up, and cut one or both jumpers on the circuit board.

WARNING

Turn off the power to the control box before starting this procedure. Failure to comply may cause a shock hazard, resulting in severe personal injury or death.

1. Shut off the power to the control box.
2. Take the upper cover plate off the control box by removing the three (3) screws that secure it.
3. Locate the jumpers at the top left of the circuit board. See Figure 11.
4. Modify the Fill time by cutting Jumpers A and/or B, as shown in Table 3, below.

Table 3. Fill Safety Lockout Mode Settings

Jumper(s)	Fill Time Period
Factory Default	20 minute Fill before Lockout
Cut Either A or B	40 minute Fill before Lockout
Cut Both A and B	60 minute Fill before Lockout

NOTE Cutting the S-1 Jumper will disable the Safety-Lockout function.

5. Replace the top cover plate, being careful to align the LED lights with the plastic lenses in the cover.
6. Install the three (3) screws. **Do not tighten** or you will damage the plastic mounts.
7. Restore the power to the control box. The new timing changes will take effect.

NOTE If you change the Fill Safety Lockout Mode settings without turning the power off in advance and on afterwards, you will need to cycle the power from OFF to ON for the new timing changes to take effect.

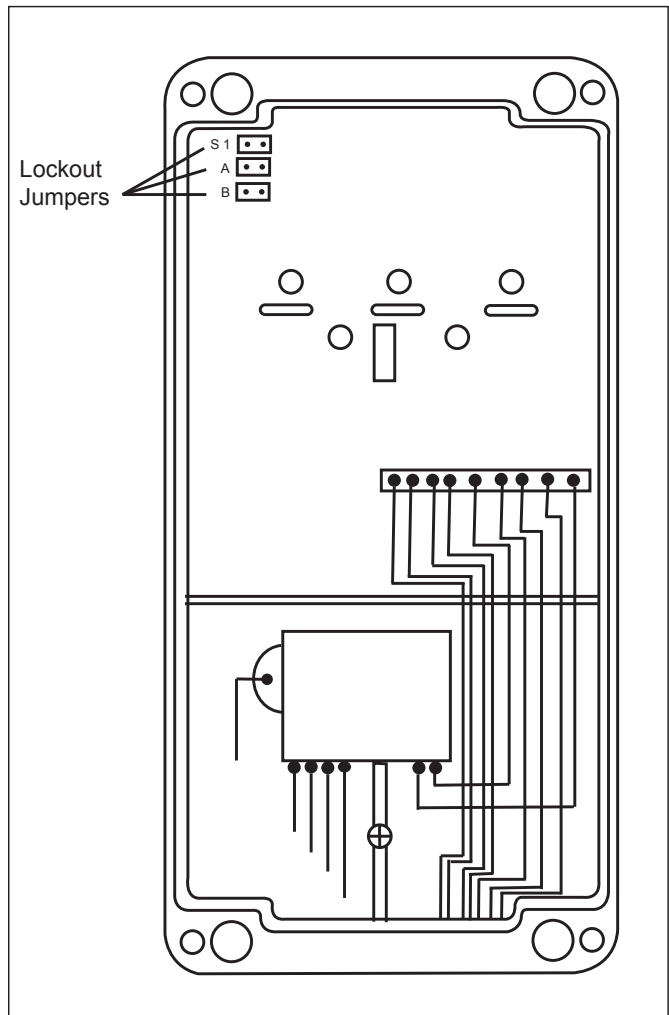


Figure 11. Safety Lockout Jumpers

Section 5. Troubleshooting

Tools required: AC volt meter and No. 6 Phillips screwdriver.

5.1 Observations at Job Site

Make these initial observations when at the jobsite.

1. Proper wire usage between the controller and the valve. (Burial style polypropylene-jacketed solid-core wire (at least 18-gauge wire): the same wire as the sensor wire.)
2. Proper wire nuts at the valve connection. (Grease-filled wire nuts or gel caps. Conventional wire nuts filled with silicone will not work since some silicones have acids that degrade copper wires.)
3. Sensor wire is continuous and not spliced. (No splices between the tips and the controller.)
4. Proper use of sensor: slip style for static pipes.
5. Proper power input voltage to the box and proper wiring for the voltage (110 or 220 VAC).
6. Remove top face plate to verify that control lights on PCB line up with the lens cover.

NOTE Before making changes to connections or settings, reset the controller by powering off for 10 seconds and then powering back on.

5.2 Test Operation of Control Unit

5.2.1 Disconnect Sensor, Valve and Relay

1. Shut power off to the control box.

⚠ WARNING

Turn off the power to the control box before starting this procedure. Failure to comply may cause a shock hazard, resulting in severe personal injury or death.

CAUTION

Separate wires so they are not touching each other. Failure to comply may cause damage to the control box.

2. Disconnect the sensor from the three (3) sensor wires. Refer to Figure 7, Control Box Wiring, page 10, and Table 1, Sensor Wire Connections, page 11.
 - a. Disconnect the black wire for the Sensor Common probe from the yellow common wire in the control box.
 - b. Disconnect the white wire for the Fill Sensor probe from the yellow wire with the blue stripe in the control box.
 - c. Disconnect the red wire for the Low Water Sensor probe from the yellow wire with the red stripe in the control box.
3. Disconnect the valve and the relay from the control box. Refer to Figure 7, Control Box Wiring, page 10, and Table 4, Valve and Relay Connections, shown below.
 - a. Disconnect the fill valve from the two (2) blue wires in the control box.

NOTE Keep the blue wires separate. Do not let them touch each other.

- b. Disconnect the relay from the two (2) red wires in the control box.

Table 4. Valve and Relay Connections

Valve or Relay	Control Box Wires
Valve Wires	Blue

Relay Wires	Red
-------------	-----

5.2.2 Observe Operation

1. Restore power to the control box and observe the operation. The control box is working if steps 2-7 in this section occur.
2. The Power light illuminates and turns green.
3. The Sensor light illuminates and turns yellow.
4. The Low Water Sensor light turns yellow.
5. Voltage is sent to the valve and relay.
 - a. After 20 seconds, the Fill light turns green and you can measure 24VAC across the blue wires with an AC volt meter.
 - b. After 20 seconds, the Low Water Cutoff light turns green and you can measure 24VAC across the red wires with an AC volt meter.
6. Make sure the sensor probes are touching the water. Then connect the three (3) sensor wires to the sensor. Refer to Table 1, Sensor Wire Connections, page 11.
 - a. Connect the black wire for the Sensor Common probe with the yellow wire in the control box.
 - b. Connect the white wire for the Fill Sensor probe with the yellow/blue wire from the control box. The Fill light will turn off after 20 seconds.
 - c. Connect the red wire for the Low Water Sensor probe to the yellow/red wire from the control box. The Low Water Cutoff light will turn off after 20 seconds.
7. Use an AC volt meter to confirm that there is 0 voltage at the blue wires in the control box and 0

voltage at the red wires in the control box.

5.2.3 Manual Valve Override

There is a manual ON/OFF lever on the valve body located just below the solenoid. See Figure 6, Manual Valve Lever, page 9.

If you are having a problem with the system and want to override the electronic water Levolor, you can manually open the valve by putting the lever in the up position ↑ (12 o'clock) for manual filling.

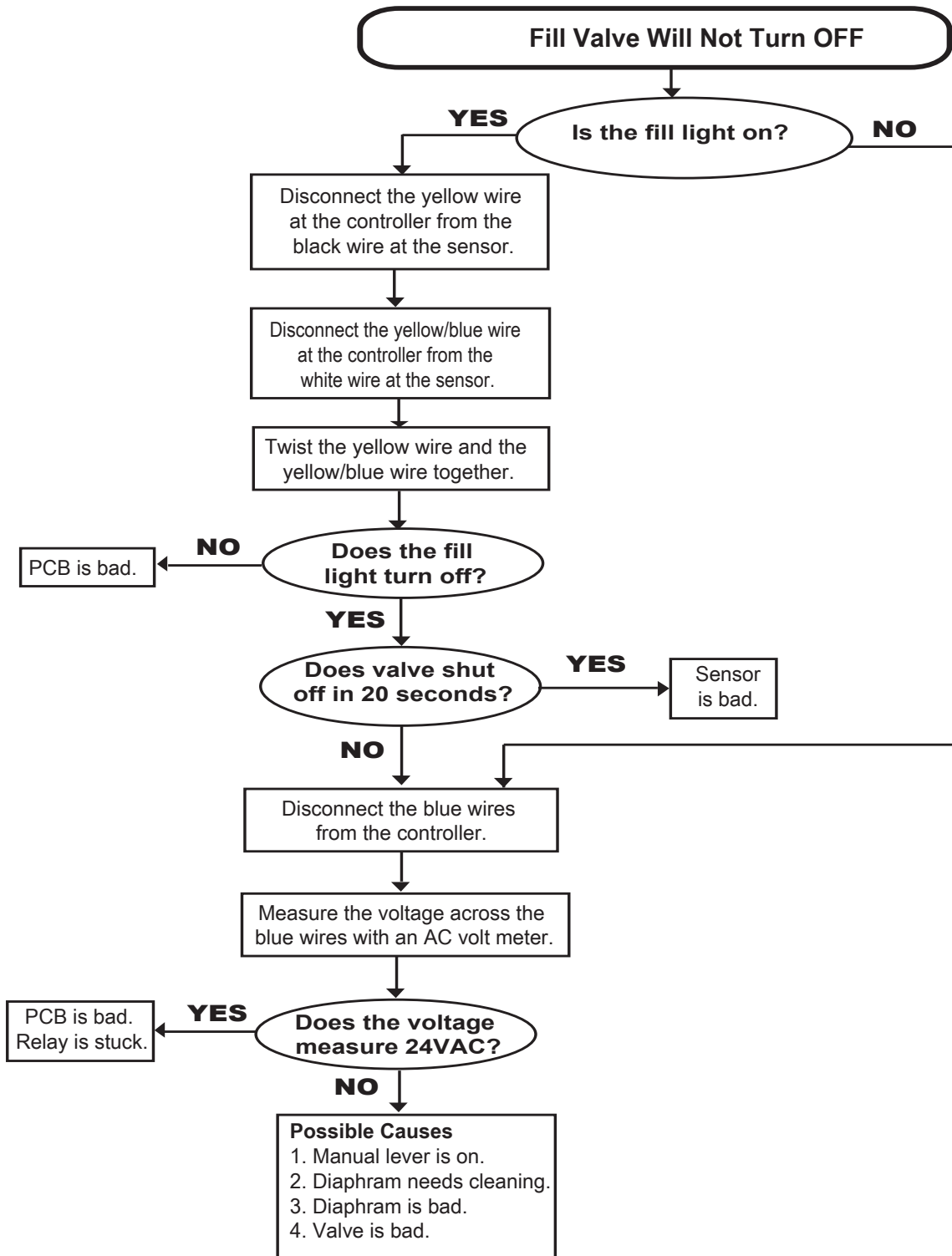
During normal operation, the lever must be in the horizontal position → (3 o'clock) for controlled filling.

5.2.4 Troubleshooting Specific Conditions

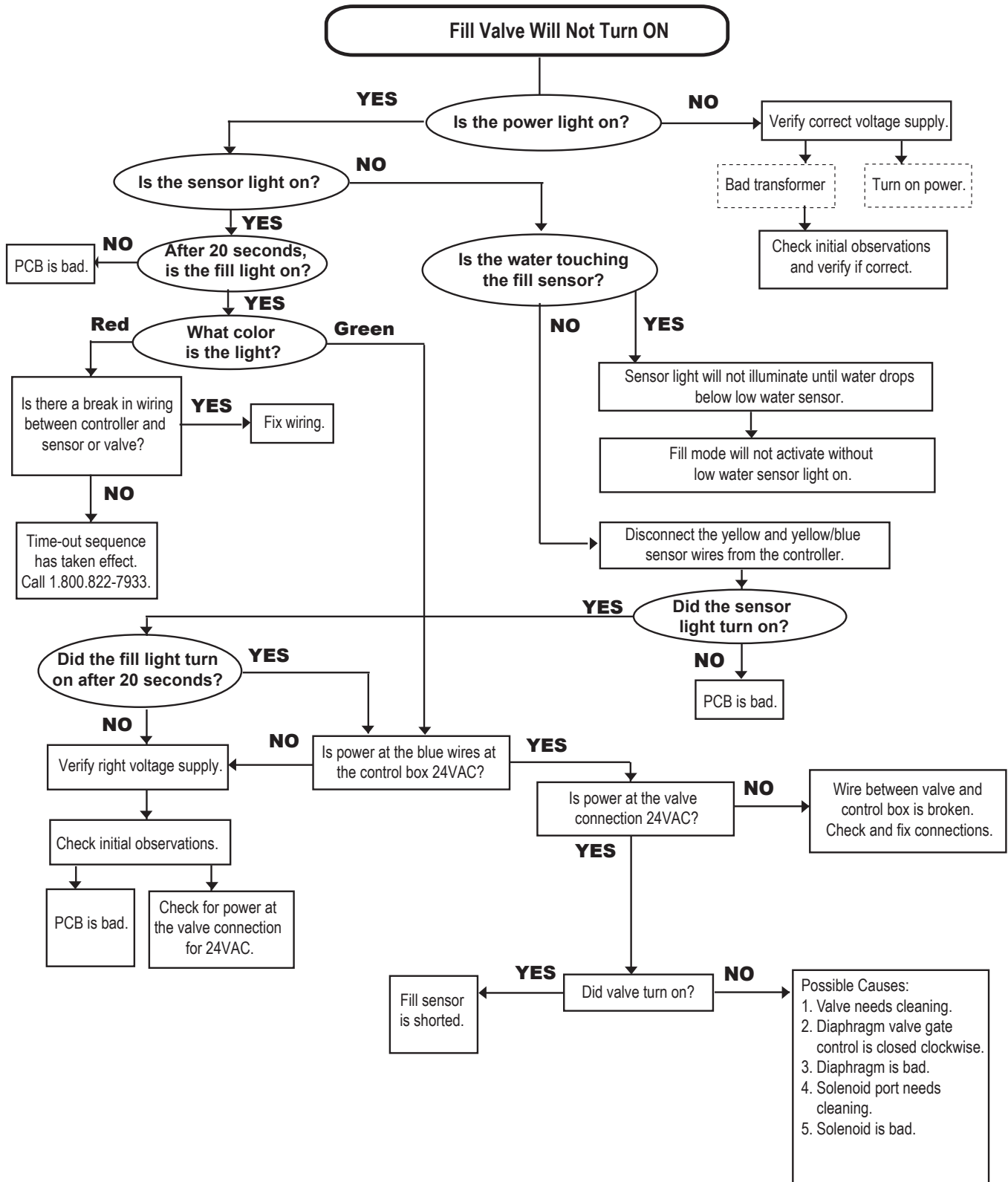
Use the troubleshooting flow charts on the following pages to find and fix these problems:

- Fill Valve Will Not Turn OFF
- Fill Valve Will Not Turn ON

5.3 Fill Valve Will Not Turn OFF



5.4 Fill Valve Will Not Turn ON



Notes

Limited Warranty

Zodiac Pool Systems, Inc. ("Zodiac") warrants all Baracuda®, Jandy®, Nature2® and Polaris® brand products to be free from manufacturing defects in materials and workmanship for a period of one (1) year from the date of retail purchase, with the following exceptions:

1. Jandy heat pumps are warranted for two (2) years. Heat pump compressors and heat exchangers are warranted for five (5) years.
2. Electronic salt water chlorine generators are warranted for three (3) years.
3. In-floor cleaning heads are warranted for the life of the pool on which they were originally installed, if originally installed with Zodiac's in-floor cleaning valves. In-floor cleaning hydraulic valves, UltraFlex® 2 valve housings, and Leaf Trapper™ deck canisters are warranted for three (3) years.
4. Nature2 cartridges, except Spa sticks, CF cartridges, and Spring cartridges, are warranted for six (6) months. Spa sticks and CF cartridges are warranted for four (4) months. Spring cartridges are not warranted. Cense® is not warranted.
5. Baracuda X7 Quattro® and S3 cleaners are warranted for two (2) years.
6. Frames for Polaris ATV®, 280, 360, 380, 480 and 3900S cleaners are warranted for five (5) years.
7. Kontiki cleaners are warranted for ninety (90) days.
8. Pool cleaner wear-and-tear items including, but not limited to, bags, tires, sweep hoses, sweep hose scrubbers, surface disks, flaps, shoes, belts, rollers, scrubbers, and footpads, are not warranted.
9. Refrigerant and other expendables are not warranted.
10. Replacement products, or parts, provided at no charge are warranted only until the original finished good's warranty has expired. Purchased replacement parts are warranted for ninety (90) days from the date of retail purchase.

This warranty applies only to products purchased and utilized in the 50 United States and Canada, is limited to the first retail purchaser, is not transferable, and does not apply to products that have been moved from their original installation sites. The liability of Zodiac shall not exceed the replacement of the defective product or its parts, and does not include transportation costs, costs for labor to service or repair the defective product, or any items or materials required to make the repair including, but not limited to, refrigerant and other expendables. Zodiac is not responsible for charges or delays incurred when a servicer is unable to perform service due to lock outs, animals, intolerable pool or spa water temperature when entry into pool or spa is required to perform service, service refusals, etc. No reimbursements will be made for loss and/or usage of water, fuel or other resources resulting from product defect. A third party service provider may charge the end-user customer for parts and/or labor required to resolve any issue not covered under warranty, such as improper installation. Zodiac is not responsible for these charges. Product discoloration, or any other cosmetic or superficial damage or deterioration, regardless of its cause, is not covered by this warranty. This warranty does not cover failures, defects, malfunctions or complaints resulting from any of the following:

1. Failure to properly install, operate or maintain the product in accordance with Zodiac's published installation, operation and/or maintenance manuals.
2. The workmanship of any installer of the product.
3. Use of non-factory authorized parts or accessories in conjunction with the product(s).
4. Product modifications or adjustments that are not in accordance with Zodiac's published installation, operation and/or maintenance manuals.
5. Not maintaining proper pool and/or spa chemical balance [pH levels between 7.2 and 7.8, with ideal range being between 7.4 and 7.6; Total Alkalinity (TA) between 80 to 120 ppm; Total Dissolved Solids (TDS) less than 2000, not including salt ppm].
6. Corrosion, erosion, scaling, calcification or other conditions caused by water hardness, chemical imbalance, or lack of product maintenance.
7. Chemical contamination of combustion air; or improper use of pool/spa chemicals, such as introducing chemicals upstream of the heater or cleaner hose, or through the skimmer; or use of copper-based algaecides in conjunction with Nature2 products.
8. Abuse, damage during transit or installation, mis-handling, tampering, vandalism, alterations, accidents, fires, floods, storms, earthquakes, power surges, lightning, pets or other animals, insects and/or their hives or nests, negligence, or acts of God.
9. Not grounding and/or bonding as specified, mis-wiring, loose wiring, cut or kinked wires, loose cable connections, incorrect wire runs, incorrect breaker size, breaker(s) in "off" position, improper wire gauge, moisture in electrical conduit, improper electrical supply, dead batteries, incorrect plumbing, inadequate size of pipe and/or fittings, cross-threading, over-tightening, under-tightening, glue drips or residue, improperly secured covers, improper valve placement or usage, unsynchronized valve actuators, valve actuators in "off" position, improper gas pipe sizing, lack of fuel, inadequate heater vent pipe sizing, programming errors, or removal of in-line filter screens from pool cleaners.
10. Freezing, corrosion, cracking, overheating, warping, flooding, moisture intrusion or any other condition caused by or related to weather, climate, improper winterization, improper equipment placement, inadequate ventilation, inadequate water circulation, roof run-off, sprinklers, irrigation systems, or lights or other products on or near the pool/spa or pool/spa equipment pad.
11. Operating the product at water flow rates below minimum, or above maximum, specifications. Operating any product or piece of equipment including, but not limited to, pumps, with insufficient quantities of water.
12. Improper equipment sizing, or product mis-applications including, but not limited to, unsuitable application of a pool cleaner, or use of residential products on commercial applications.
13. Dirty, clogged, blocked, covered or obstructed plumbing, cleaner parts, chlorine generator cells or sensors, pump strainer baskets, pump impellers, heater orifices (including blockage by spider webs), heater grills, doors, flue boxes, flue vents or flue collectors, filter elements, or filter breather tubes.
14. Collateral damage caused by failure of any component including O-rings, pump strainer baskets, DE grids, sand filter laterals, or cartridge elements.

This is the only warranty given by Zodiac. No one is authorized to make any other warranties on behalf of Zodiac. IMPLIED WARRANTIES, INCLUDING THE IMPLIED WARRANTY OF MERCHANTABILITY AND THE IMPLIED WARRANTY OF FITNESS FOR A PARTICULAR PURPOSE, ARE LIMITED TO THE EXPRESS WARRANTIES LISTED ABOVE. Some states and/or provinces do not allow limitations on how long an implied warranty lasts, so the above limitation may not apply to you. Zodiac expressly disclaims and excludes any liability for consequential, incidental, indirect, or punitive damages for breach of any expressed or implied warranty. In no event shall Zodiac be liable for incidental or consequential damages of any nature, including damage to vinyl liners, plaster, aggregate-based pool surfaces, tile, stone, coping, fixtures, skimmers or skimmer covers, plumbing, drains, equipment covers or shelters, landscaping, animals, plants, or dwellings. Some states and/or provinces do not allow the exclusion or limitation of incidental or consequential damages, so the above limitation may not apply to you. Certain vinyl liner patterns are particularly susceptible to rapid surface wear or pattern removal caused by objects coming into contact with the vinyl surface, including pool brushes, pool toys, floats, fountains, chlorine dispensers, and automatic pool cleaners. Some vinyl liner patterns can be seriously scratched or abraded by rubbing the surface with a pool brush. Ink from the pattern can also rub off during the installation process or when it comes into contact with objects in the pool. Zodiac is not responsible for, and this warranty does not cover, pattern removal, cuts, abrasions or markings on vinyl liners.

This warranty gives you specific legal rights. You may also have other rights that vary by state and/or province. For warranty consideration, contact the original dealer and provide the following information: proof of purchase, model number, serial number, date of retail purchase, and date of installation. The dealer will contact the factory to obtain instructions regarding the claim and to determine the location of the nearest independent service company. If the dealer is not available, you can locate an independent service company in your area by visiting www.baracuda.com, www.jandy.com, or www.polarispool.com, or by emailing our Technical Support department at techsupport.vista@zmp-zodiac.com, or by calling our Technical Support department at 800-822-7933. In Canada, call 888-647-4004. All returned parts must have a Returned Material Authorization number to be evaluated under the terms of this warranty.



ETL LISTED
CONFORMS TO
UL STD 1563

CERTIFIED TO
CAN/CSA C22.2 NO. 218.1

H0303800A

Jandy®

Zodiac Pool Systems, Inc.
6000 Condor Drive, Moorpark, CA, USA 93021 • 800-822-7933 FAX 877-327-1403
Litho in USA © 2009 Jandy Pool Products, Inc. 0809