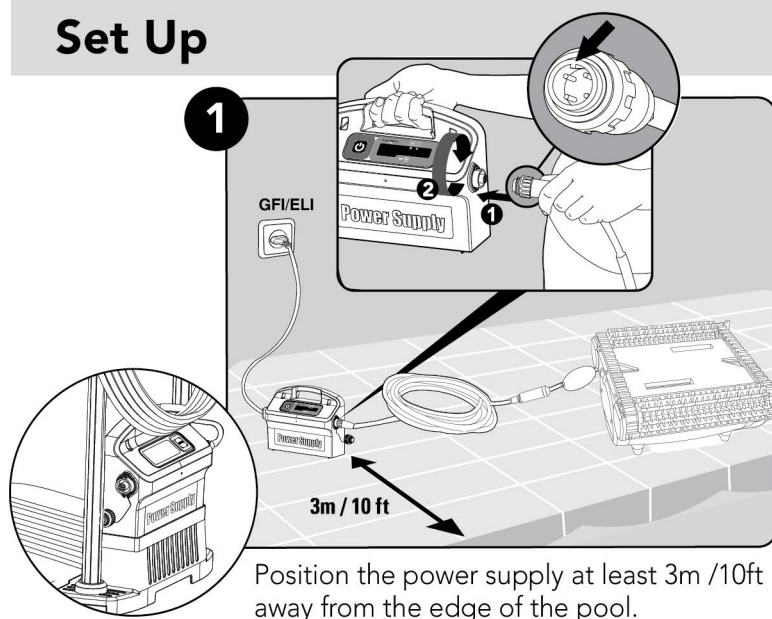
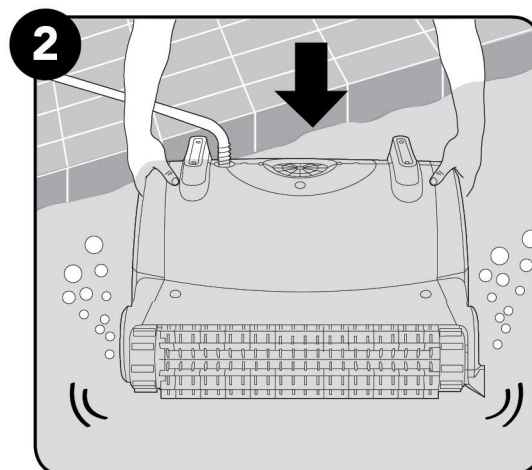


Robot operation

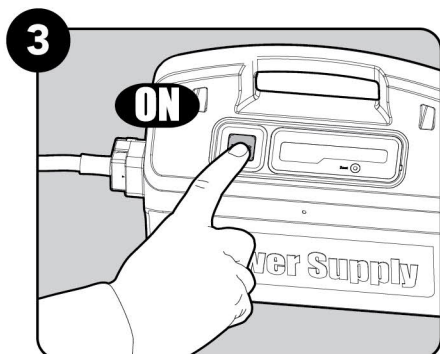
Set Up



Into the pool

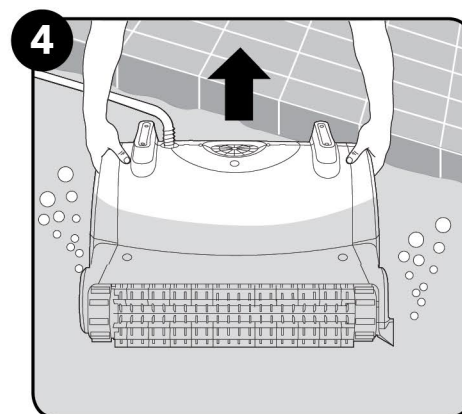


Operation

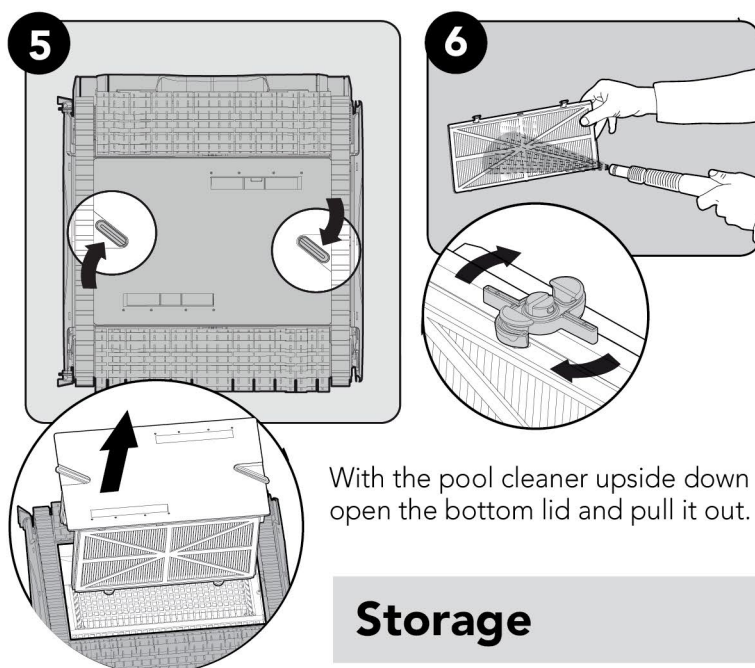


The robot will now begin working for a complete cleaning cycle. At the end of the cycle, it will automatically switch itself off.


Out of the pool

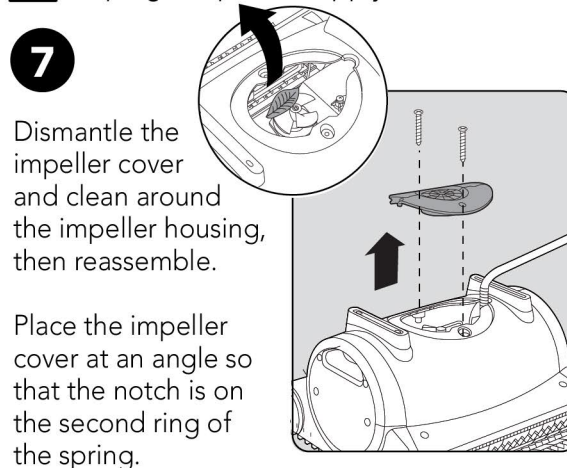


Cleaning the filter



Periodical maintenance

 *Unplug the power supply before servicing*



Storage

- 8** Coil the cable and store in a cool, dry place on the Caddy. Do NOT store the robot where it will be exposed to direct sunlight, excessive heat or to frost.