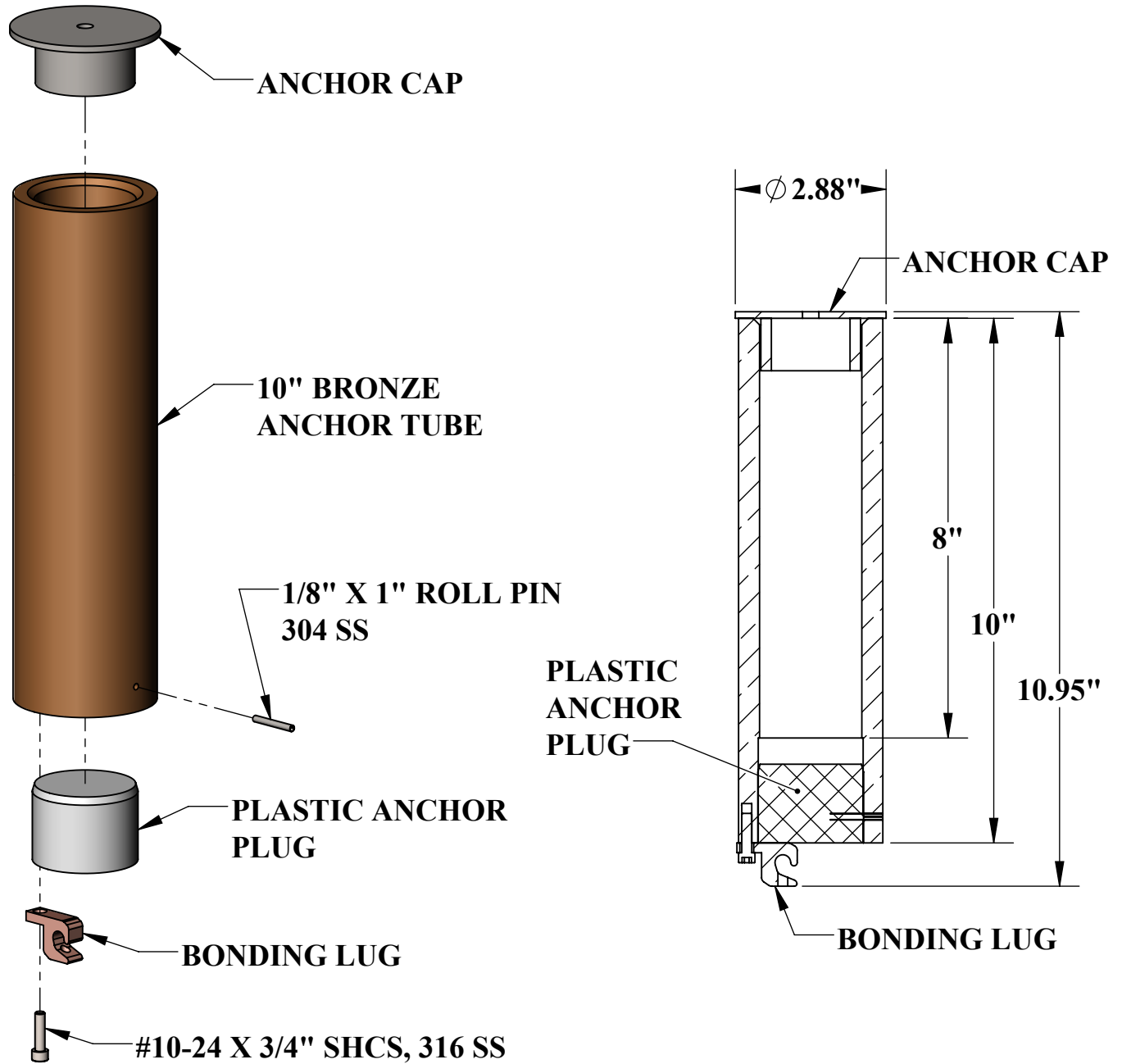


# SCOUT & MIGHTY 10" ANCHOR



## SPECIFICATIONS:

THE SCOUT/MIGHTY 10" ANCHOR ASSEMBLY INCLUDES ONE (1) 1.9" I.D. X 10" BRONZE ANCHOR, ONE (1) STAINLESS STEEL ANCHOR CAP, ONE (1) HDPE ANCHOR PLUG, ONE (1) COPPER BONDING LUG, ONE (1) #10 SOCKET HEAD CAP SCREW AND ONE (1) 1/8" ROLL PIN.



9889 GARRYMORE LANE  
MISSOULA, MT 59808  
(406) 549-0769  
FAX (406) 549-2602

NOTE:  
\*SPECIFICATIONS ARE SUBJECT TO CHANGE WITHOUT NOTICE

PRODUCT:		10" ANCHOR	
PART #:		F-808SA-10	
SCALE:	1:3	DATE:	8/29/2019
DRAWN BY:	KR	REVISION:	A