

Installation Guide

1



Unpack

Make sure you have all the above parts. If anything is missing, contact Only About Innovations® as described on the back of this sheet.

After unpacking the hose, stretch it (this is very important). The SkimmerMotion® hose should be as straight as possible.

3

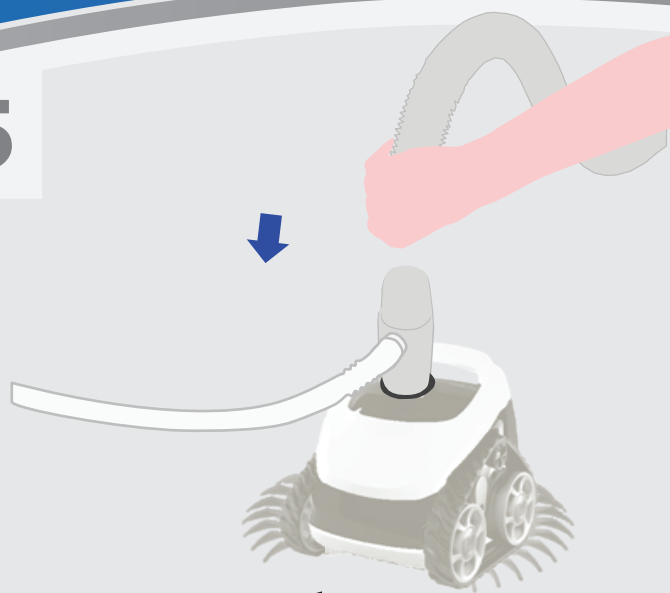


Disconnect

Disconnect the main hose from your pool cleaner (Baracuda®, Kreepy Krauly®, Hayward® etc.)

REMEMBER: Your pool cleaner's hose must be 1¼" diameter for it to work properly with your new SkimmerMotion®

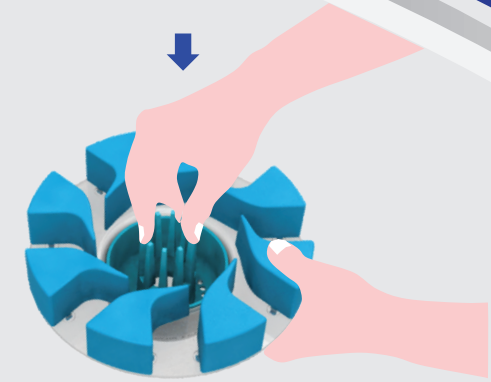
5



Reconnect

Reconnect your original pool hose (lead) into the Tee placed on Step 4.

7



Insert Basket

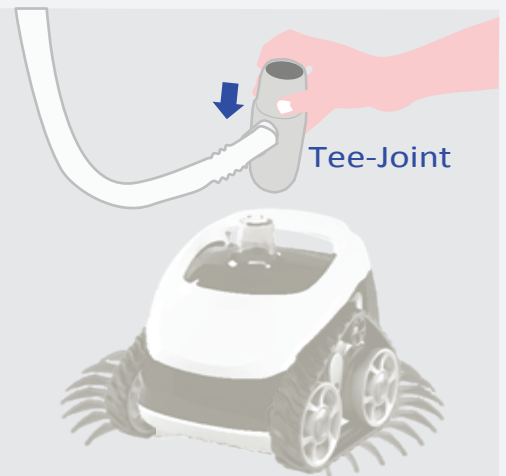
Lastly, insert the basket provided inside your SkimmerMotion®. Set the suction power setting PIN to #2

2 Turn Pump Off



WARNING: Always turn off the pool pump and any electrical source from the pool before installing your SkimmerMotion®. Also, turn off your filter system.

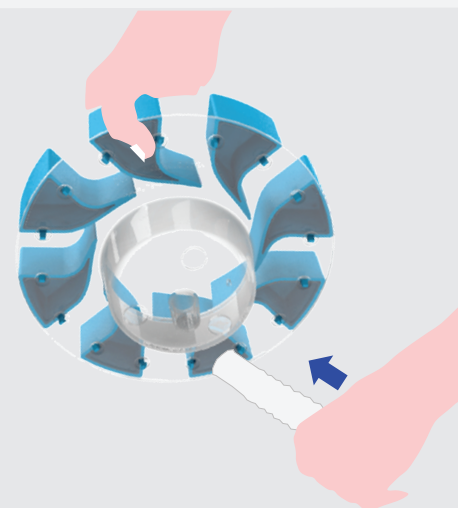
4



Connect Tee-Joint

Connect the Tee ("T") that comes with your SkimmerMotion®.

6



Attach Skimmer

Connect the other end of the Skimmer hose to your new SkimmerMotion®.

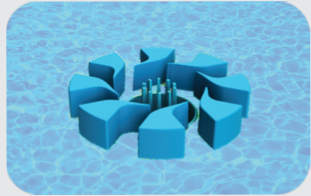
8



Place O-ring

The o-ring provided is to avoid bigger leaves to obstruct the center of the basket. Check the o-ring stays ¼" above water level

9

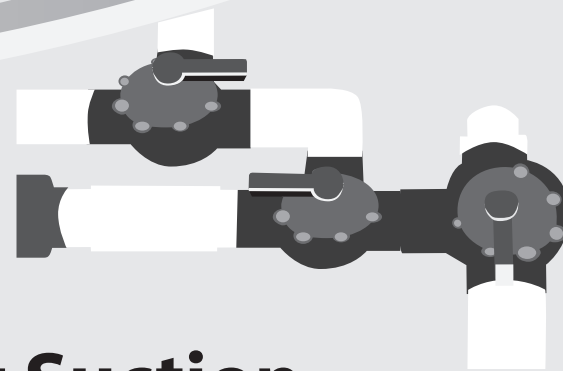


Place in Water

Put both your Pool Cleaner and SkimmerMotion® inside your swimming pool.

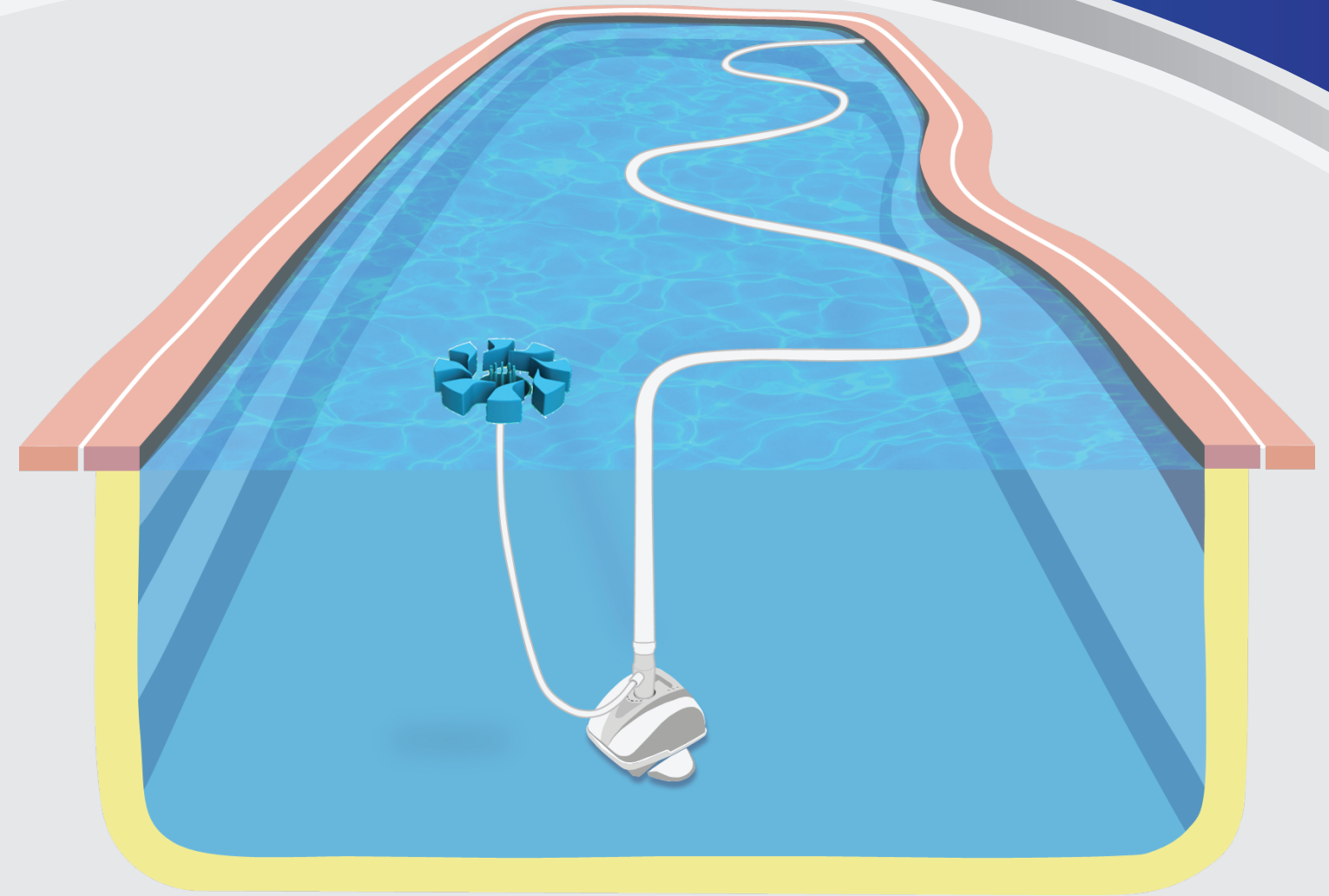
IMPORTANT: Make sure there are no air bubbles inside your SkimmerMotion® hose and that both your Pool Cleaner and SkimmerMotion® hoses are not tangled together.

11



Adjust Suction

Your SkimmerMotion™ uses a fraction of the suction of your entire pool system. Increase with the SkimmerMotion attached to the APC and the basket (SM Power Setting) set to #3, increase the suction of your pool cleaner for proper operation. Move the pool valves of your pool pump and adjust your APC using the FLOW meter that usually comes with it (Follow the APC manual).



If you have bigger leaves that manage to pass through the central crown, use the included crown O-ring that will stop the bigger leaves to get into the hose and block the system.

WARNING - Hazardous suction. Do not play with cleaner or hose or apply to body. Can trap and tear hair or body parts.

WARNING - To avoid the risk of injury, do not let children use or play with pool cleaner.

WARNING - Do not allow swimmers in the pool while pool cleaner is operating. Hose can trip or entangle swimmers which could result in drowning.

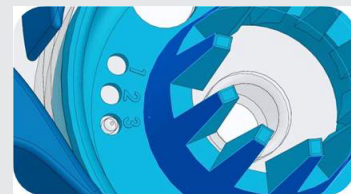
10

Turn Pump On

Only after your SkimmerMotion® is in the water connected properly to your Pool Cleaner, you may turn on the pump system (and also the filter, if you turned it off in step 2).

NOTE: Make sure all your hoses are untangled and fully straightened out (see pool illustration).

12



Adjust Whirlpool

After the automatic pool cleaner is working normally, set SkimmerMotion basket to #2. SkimmerMotion should work fine. SM should have the whirlpool effect to absorb debris at #2 with no air trapped (noise). Setting to #1 is the maximum whirlpool power, but air could be trapped (NOISY SM) and impact the performance of your system. If your system is making noise, repeat step 11.