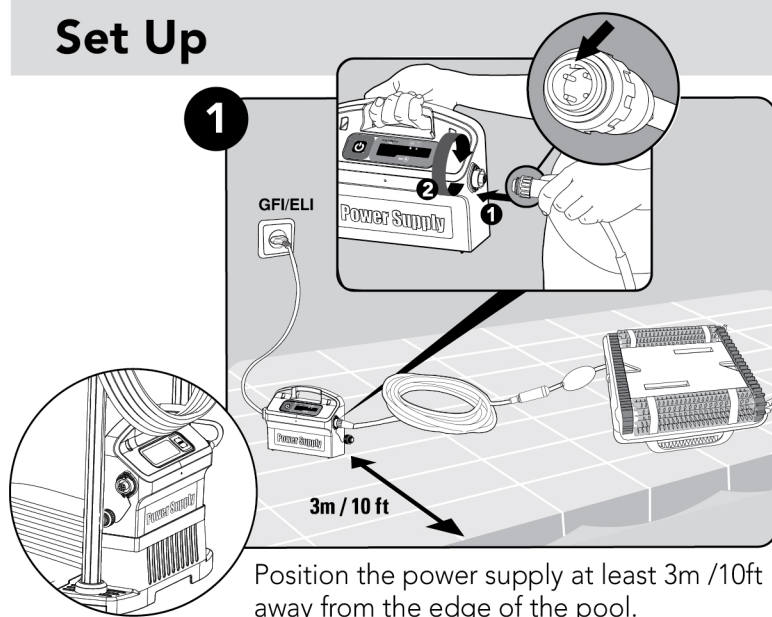
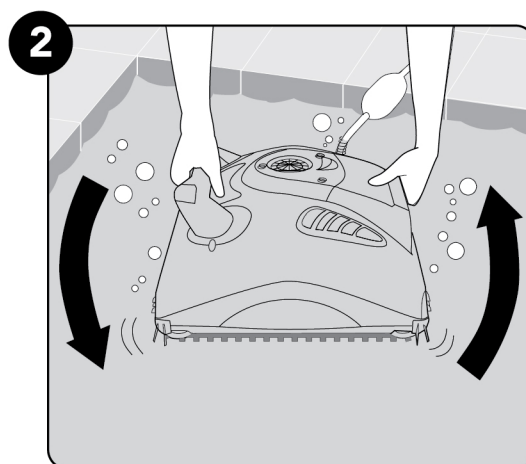


## Robot operation

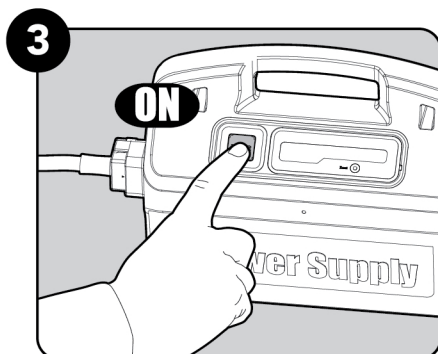
### Set Up



### Into the pool

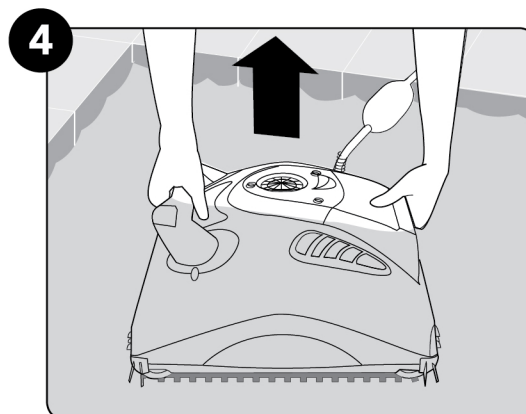


### Operation

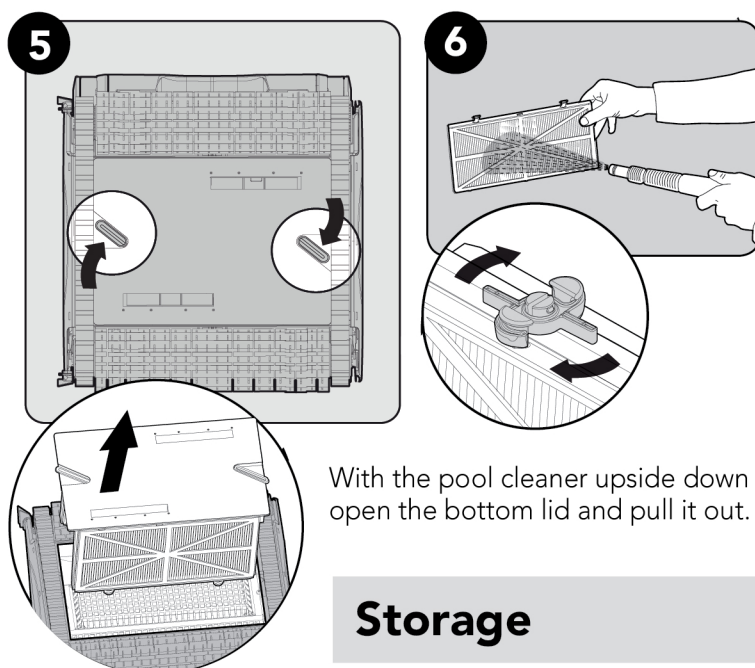


The robot will now begin working for a complete cleaning cycle. At the end of the cycle, it will automatically switch itself off.


### Out of the pool



### Cleaning the filter

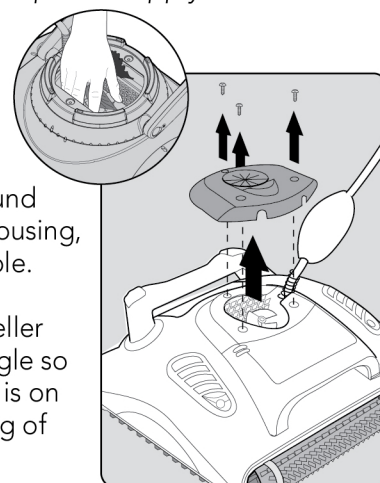


### Periodical maintenance

 *Unplug the power supply before servicing*

**7** Dismantle the impeller cover and clean around the impeller housing, then reassemble.

Place the impeller cover at an angle so that the notch is on the second ring of the spring.



### Storage

**8** Coil the cable and store in a cool, dry place on the Caddy. Do NOT store the robot where it will be exposed to direct sunlight, excessive heat or to frost.