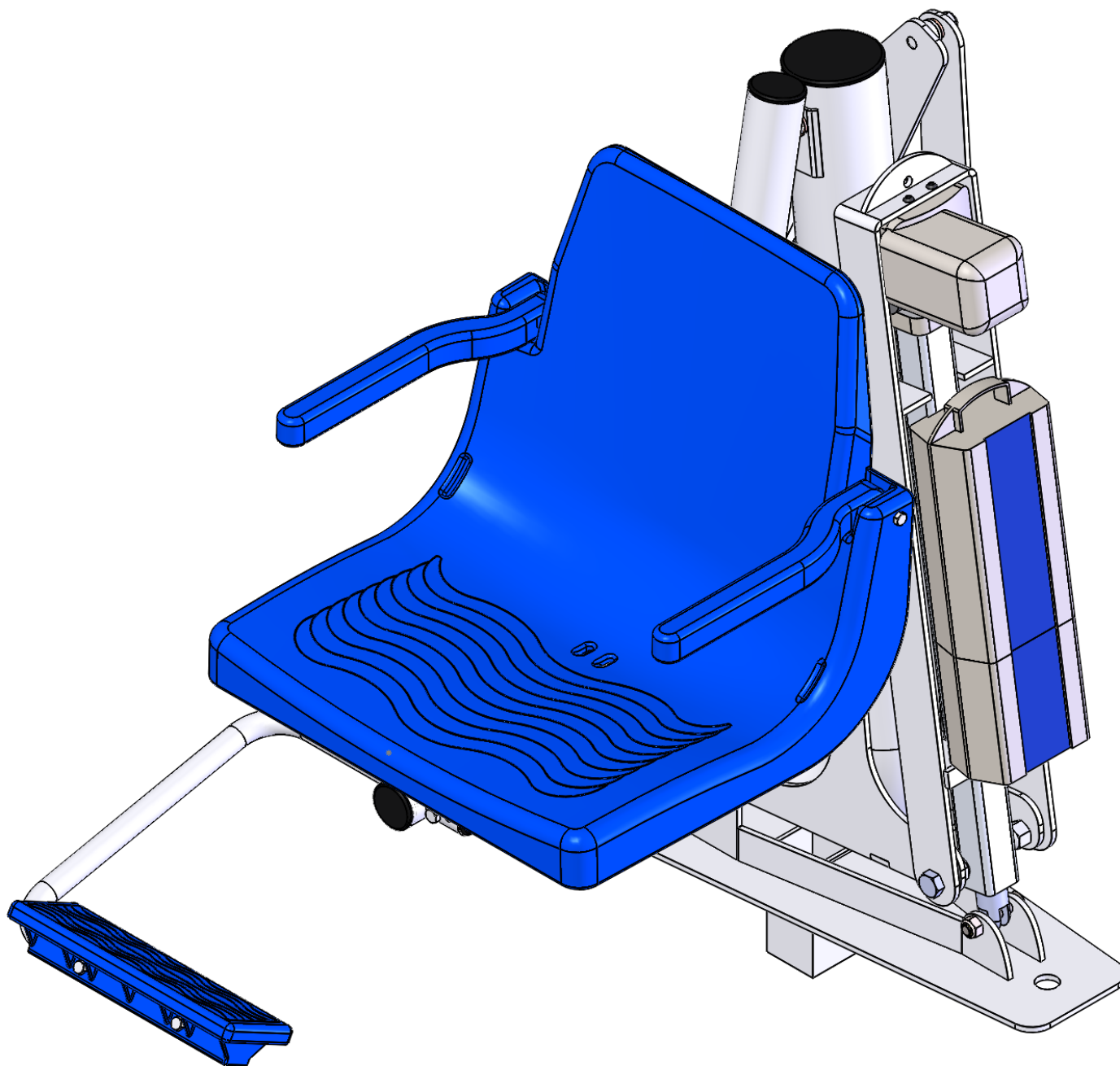


REV.

DESCRIPTION

DATE

APVD.



MATERIAL:

SCALE: 1:6 REV: 100 DATE: 10/14/2013 DWR: B.E.

WEIGHT: LBS MACH WEIGHT: LBS APVD BY: J.I.

DO NOT SCALE DRAWING
UNLESS OTHERWISE SPECIFIED
DIMENSIONS ARE IN INCHES
TOLERANCES ARE:

X. = $\pm .125$
XX. = $\pm .062$
XXX. = $\pm .031$

FRACTIONAL DIMENSIONS $\pm .125$
FILLET RADIUS .000 THRU $\pm .094$
HOLES .000 THRU .015
ANGLES ± 1 DEGREE

PROPRIETARY AND CONFIDENTIAL

THE INFORMATION CONTAINED IN THIS DRAWING IS THE SOLE
PROPERTY OF Global Lift Corporation. ANY REPRODUCTION IN
PART OR AS A WHOLE WITHOUT THE WRITTEN PERMISSION OF
Global Lift Corp. IS PROHIBITED.

684 N. Port Crescent, Suite C
Bad Axe, MI 48413

TITLE:

P-375

DWG. NO.

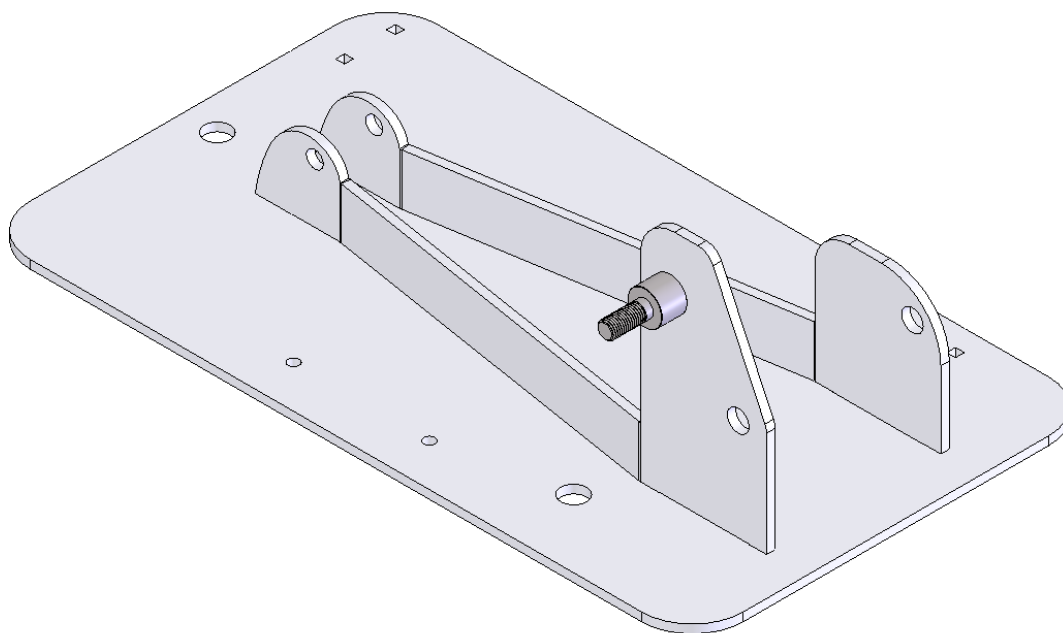
ASSEMBLY MANUAL

REV.

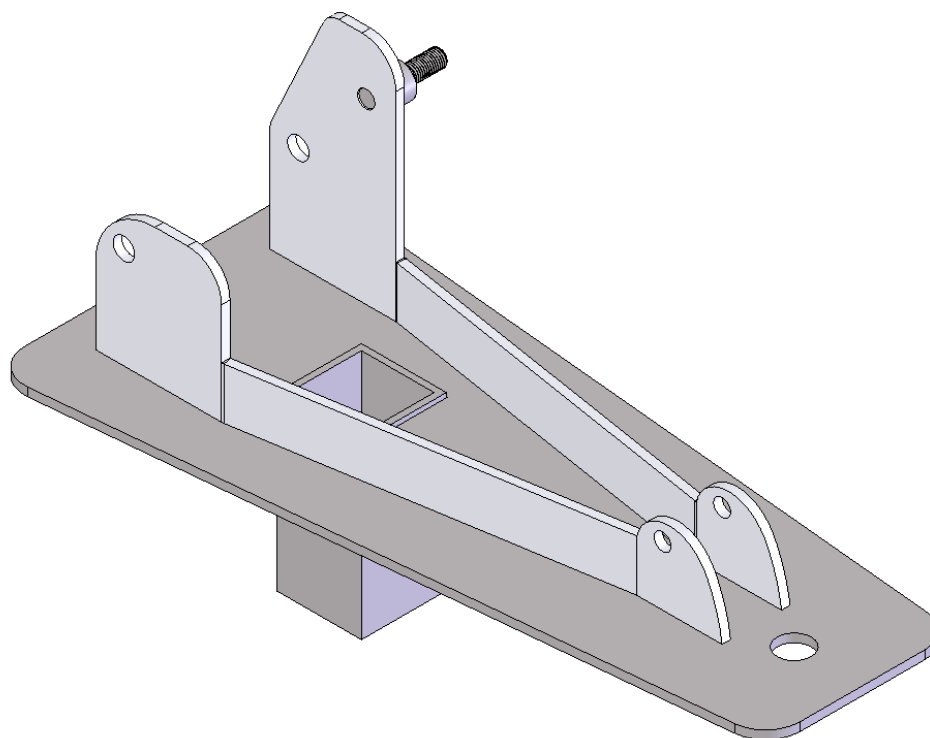
DESCRIPTION

DATE

APVD.



BASE PLATE FOR C-375
CGLCBP-0



BASE PLATE FOR P-375
PGLCBP-0

MATERIAL:

SCALE: 1:4 REV: 100 DATE: 10/14/2013 DWR: B.E.

WEIGHT: 8.010 LBS MACH WEIGHT: LBS APVD BY: J.I.

DO NOT SCALE DRAWING
UNLESS OTHERWISE SPECIFIED
DIMENSIONS ARE IN INCHES
TOLERANCES ARE:

X. = ±.125 FRACTIONAL DIMENSIONS ±.125
XX. = ±.062 FILLET RADIUS .000 THRU +.094
XXX. = ±.031 HOLES .000 THRU .015
ANGLES ±1 DEGREE

PROPRIETARY AND CONFIDENTIAL

THE INFORMATION CONTAINED IN THIS DRAWING IS THE SOLE
PROPERTY OF Global Lift Corporation. ANY REPRODUCTION IN
PART OR AS A WHOLE WITHOUT THE WRITTEN PERMISSION OF
Global Lift Corp. IS PROHIBITED.



684 N. Port Crescent, Suite C
Bad Axe, MI 48413

TITLE:

BASE PLATES

C-375, P-375

DWG. NO.

BASE PLATES

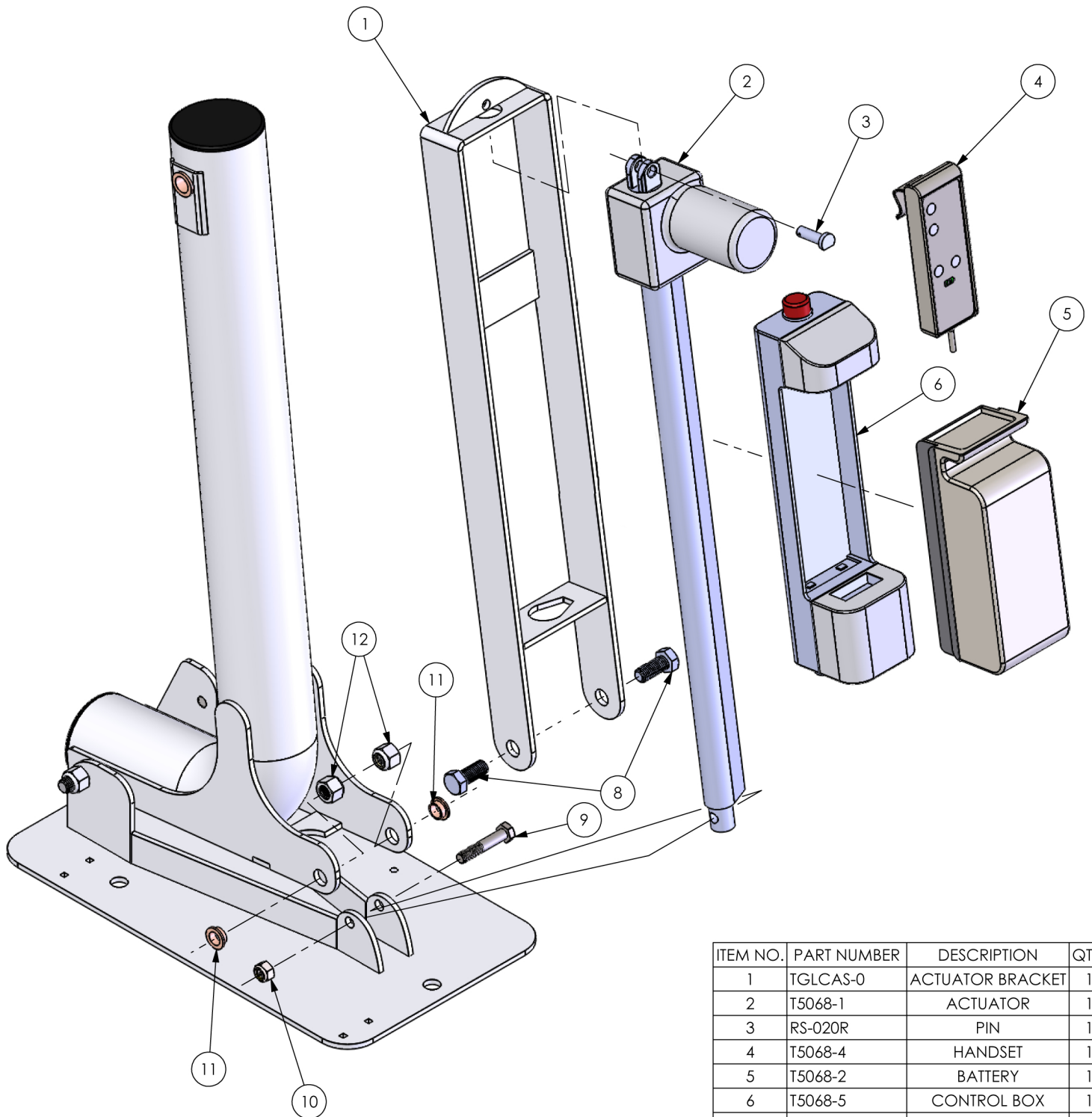
NOTES:

REV.

DESCRIPTION

DATE

APVD.



ITEM NO.	PART NUMBER	DESCRIPTION	QTY.
1	TGLCAS-0	ACTUATOR BRACKET	1
2	T5068-1	ACTUATOR	1
3	RS-020R	PIN	1
4	T5068-4	HANDSET	1
5	T5068-2	BATTERY	1
6	T5068-5	CONTROL BOX	1
8	BOLT625-11-1.5	BOLT	2
9	BOLT-M12-65	BOLT	1
10	NUT-M12	NUT	2
11	BUSH625-344	BUSHING	2
12	NUT625-11	NUT	2

MATERIAL: NOTED

SCALE: 1:6

REV: 100

DATE: 1/5/2016

DWR: B.E.

WEIGHT: LBS

MACH WEIGHT: LBS

APVD BY: J.I.

DO NOT SCALE DRAWING
UNLESS OTHERWISE SPECIFIED
DIMENSIONS ARE IN INCHES
TOLERANCES ARE:

X. = $\pm .125$
XX. = $\pm .062$
XXX. = $\pm .031$

FRACTIONAL DIMENSIONS $\pm .125$
FILLET RADII .000 THRU $\pm .094$
HOLES .000 THRU .015
ANGLES ± 1 DEGREE

PROPRIETARY AND CONFIDENTIAL

THE INFORMATION CONTAINED IN THIS DRAWING IS THE SOLE
PROPERTY OF Global Lift Corporation. ANY REPRODUCTION IN
PART OR AS A WHOLE WITHOUT THE WRITTEN PERMISSION OF
Global Lift Corp. IS PROHIBITED.

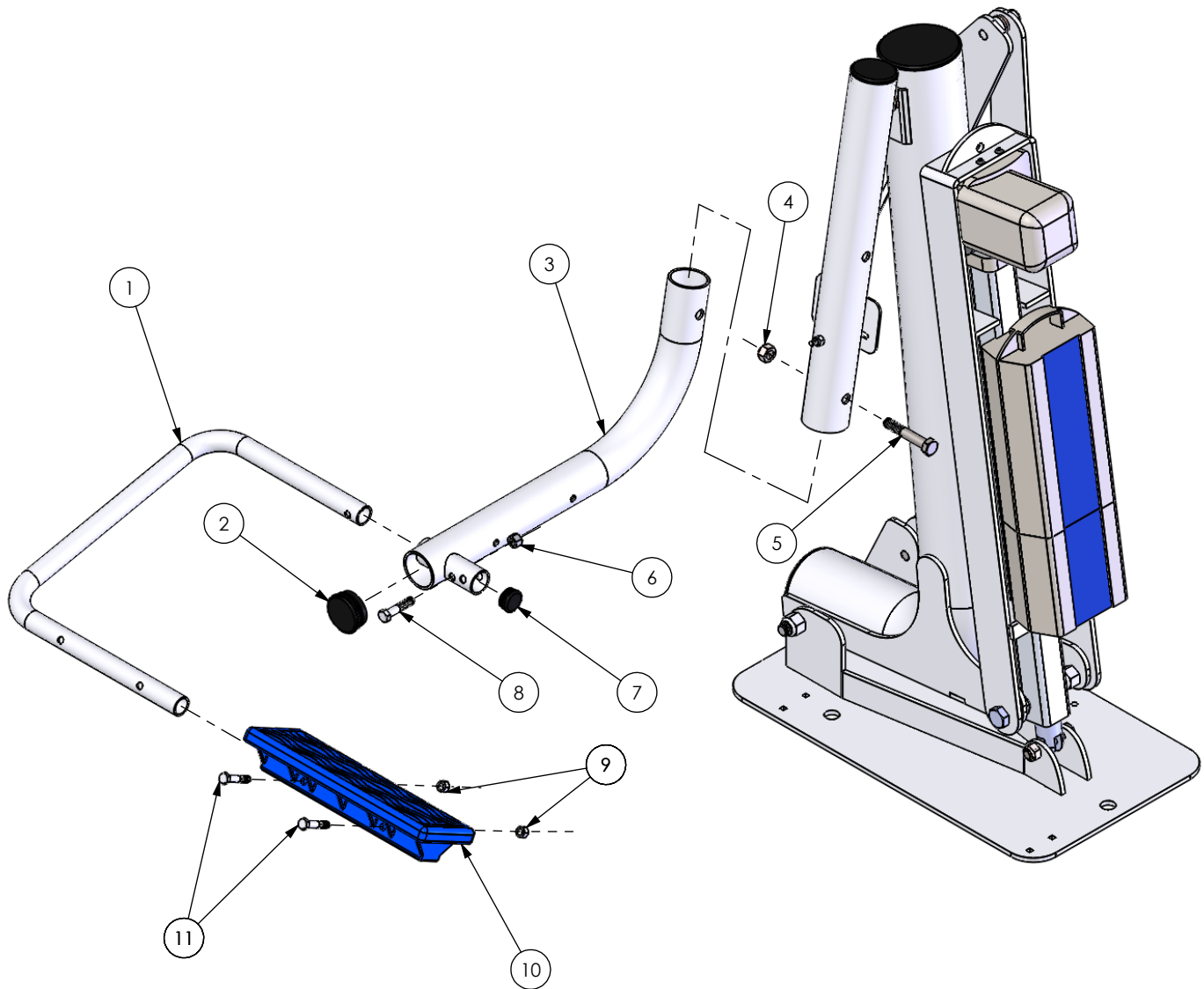
684 N. Port Crescent, Suite C
Bad Axe, MI 48413

TITLE:

ACTUATOR BRACKET,
CONTROL BOX,
BATTERY, HANDSET

DWG. NO.

EXPLODED VIEW



ITEM NO.	PART NUMBER	DESCRIPTION	QTY.
1	GLCSEATB-7	FOOT REST TUBE	1
2	PLASCAP-2	PLASTIC CAP	1
3	GLCSEATB-2	SEAT TUBE LOWER	1
4	NUT-M12	NUT	1
5	BOLT-M12-70	BOLT	1
6	NUT375-16-2	NUT	11
7	PLASCAP-1	PLASTIC CAP	1
8	BOLT375-16-1.75	BOLT	1
9	NUT313-18	NUT	2
10	GLCSEATB-9	FOOT REST	1
11	BOLT313-18-1.75	BOLT	2

SCALE: 1:8 REV: 100 DATE: 10/15/2013 DWR: B.E.

WEIGHT: LBS MACH WEIGHT: LBS APVD BY: J.I.

DO NOT SCALE DRAWING
UNLESS OTHERWISE SPECIFIED
DIMENSIONS ARE IN INCHES
TOLERANCES ARE:

X. = ±.125 FRACTIONAL DIMENSIONS ±.125
XX. = ±.062 FILLET RADII .000 THRU ±.094
XXX. = ±.031 HOLES .000 THRU .015
ANGLES ± 1 DEGREE

PROPRIETARY AND CONFIDENTIAL

THE INFORMATION CONTAINED IN THIS DRAWING IS THE SOLE
PROPERTY OF Global Lift Corporation. ANY REPRODUCTION IN
PART OR AS A WHOLE WITHOUT THE WRITTEN PERMISSION OF
Global Lift Corp. IS PROHIBITED.



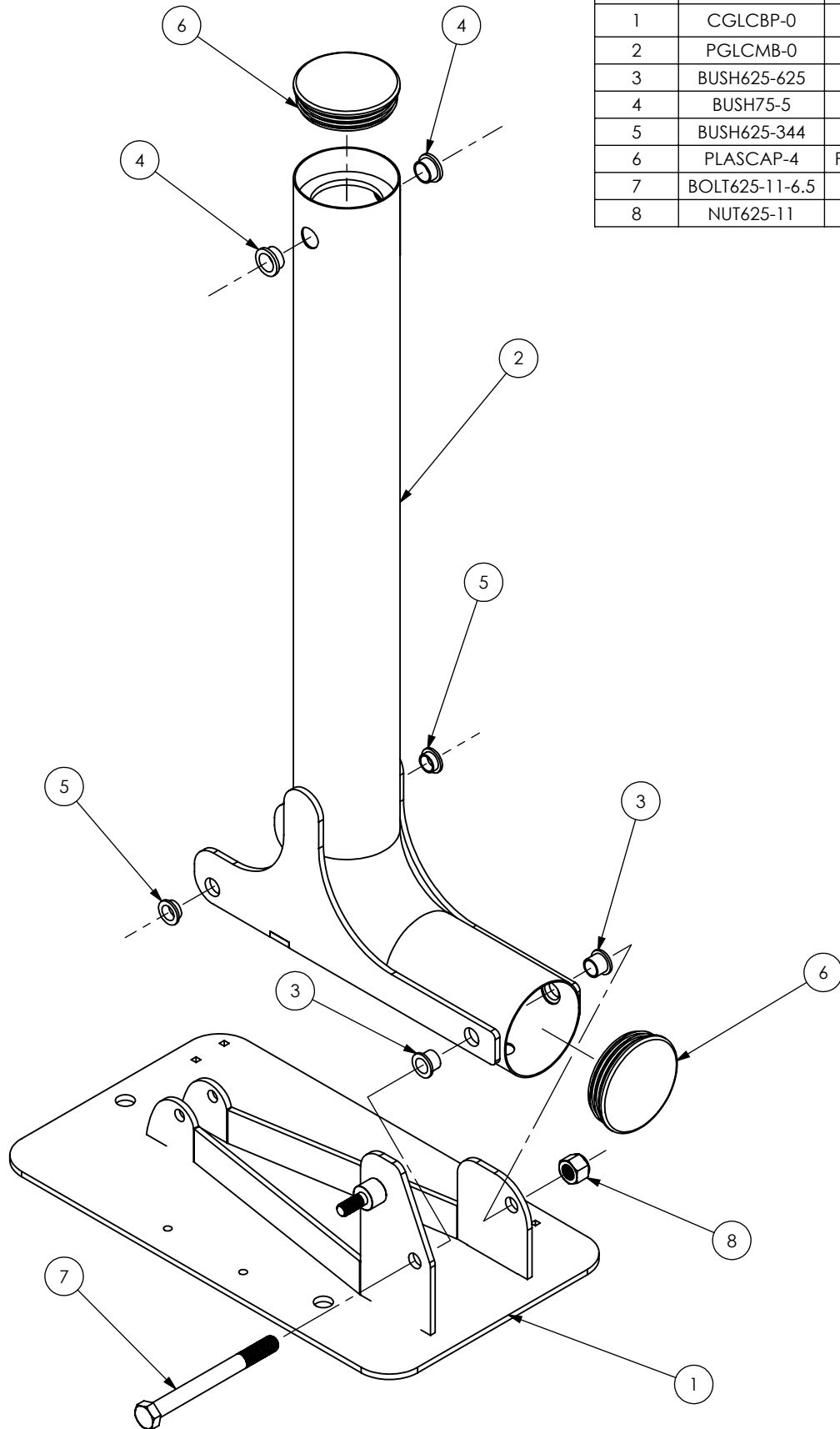
684 N. Port Crescent, Suite C
Bad Axe, MI 48413

TITLE: C-375,P-375
FOOT REST & SEAT
TUBE

DWG. NO.
FOOT REST & SEAT TUBE

NOTES:

REV.	DESCRIPTION	DATE	APVD.
ITEM NO.	PART #	DESCRIPTION	QTY.
1	CGLCBP-0	BASE PLATE	1
2	PGLCMB-0	MAIN BEAM	1
3	BUSH625-625	BUSHING	2
4	BUSH75-5	BUSHING	2
5	BUSH625-344	BUSHING	2
6	PLASCAP-4	PLASTIC CAP	2
7	BOLT625-11-6.5	BOLT	1
8	NUT625-11	NUT	1



MATERIAL:

SCALE: 1:6	REV: 100	DATE: 12/12/2012	DWR: B.E.
WEIGHT: LBS	MACH WEIGHT: LBS	APVD BY: J.I.	

DO NOT SCALE DRAWING
UNLESS OTHERWISE SPECIFIED
DIMENSIONS ARE IN INCHES
TOLERANCES ARE:

X. = ±.125
XX. = ±.062
XXX. = ±.031
FRACTIONAL DIMENSIONS ±.125
FILLET RADII .000 THRU ±.094
HOLES .000 THRU .015
ANGLES ± 1 DEGREE

PROPRIETARY AND CONFIDENTIAL

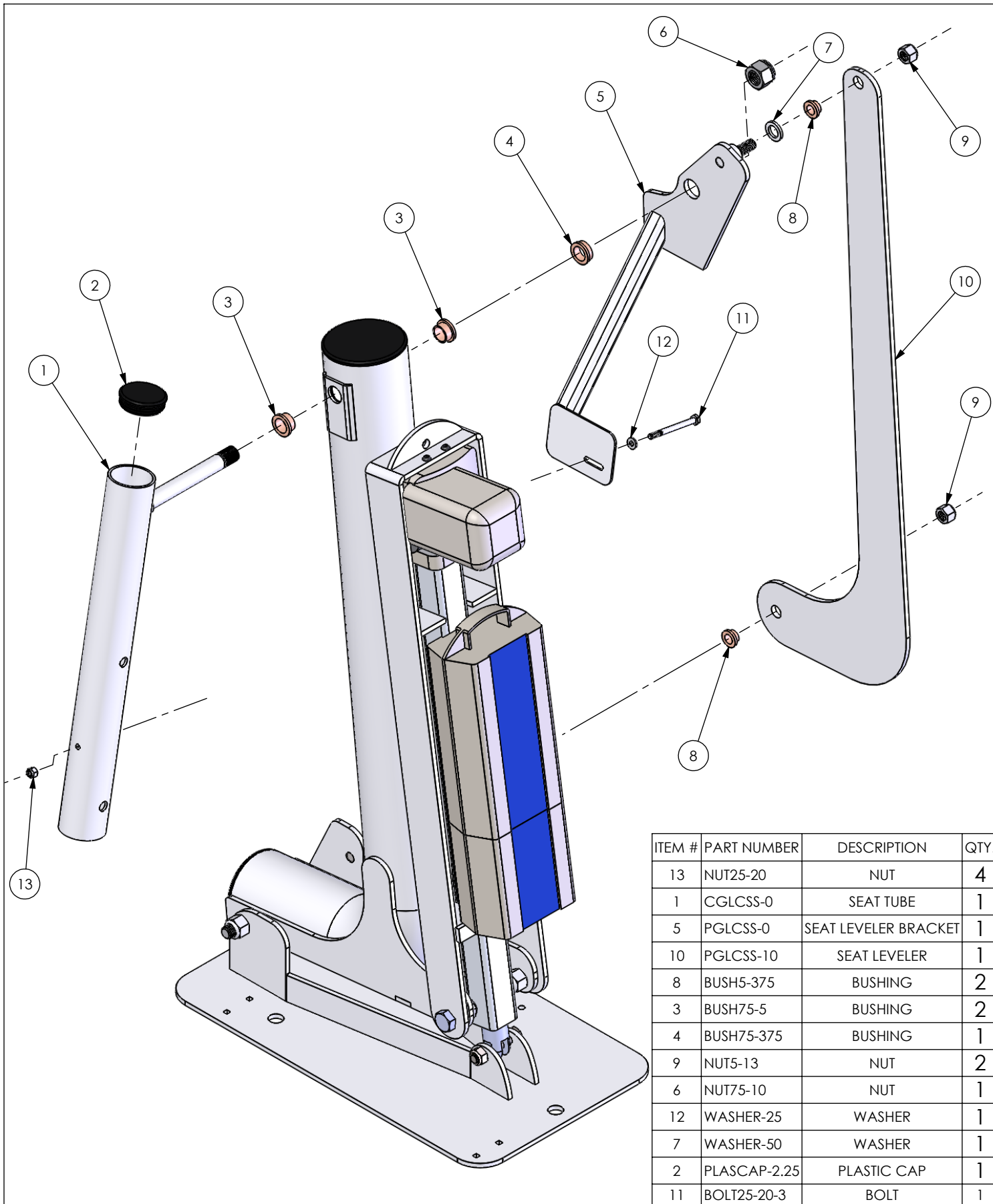
THE INFORMATION CONTAINED IN THIS DRAWING IS THE SOLE
PROPERTY OF Global Lift Corporation. ANY REPRODUCTION IN
PART OR AS A WHOLE WITHOUT THE WRITTEN PERMISSION OF
Global Lift Corp. IS PROHIBITED.



684 N. Port Crescent, Suite C
Bad Axe, MI 48413

TITLE: C-375, P-375
MAIN BEAM TO
BASE PLATE
ASSEMBLY

DWG. NO.
CGLCMBEXPLD



SCALE: 1:6 REV: 100 DATE: 10/14/2013 DWR: B.E.
 WEIGHT: LBS MACH WEIGHT: LBS APVD BY: J.I.

DO NOT SCALE DRAWING
 UNLESS OTHERWISE SPECIFIED
 DIMENSIONS ARE IN INCHES
 TOLERANCES ARE:

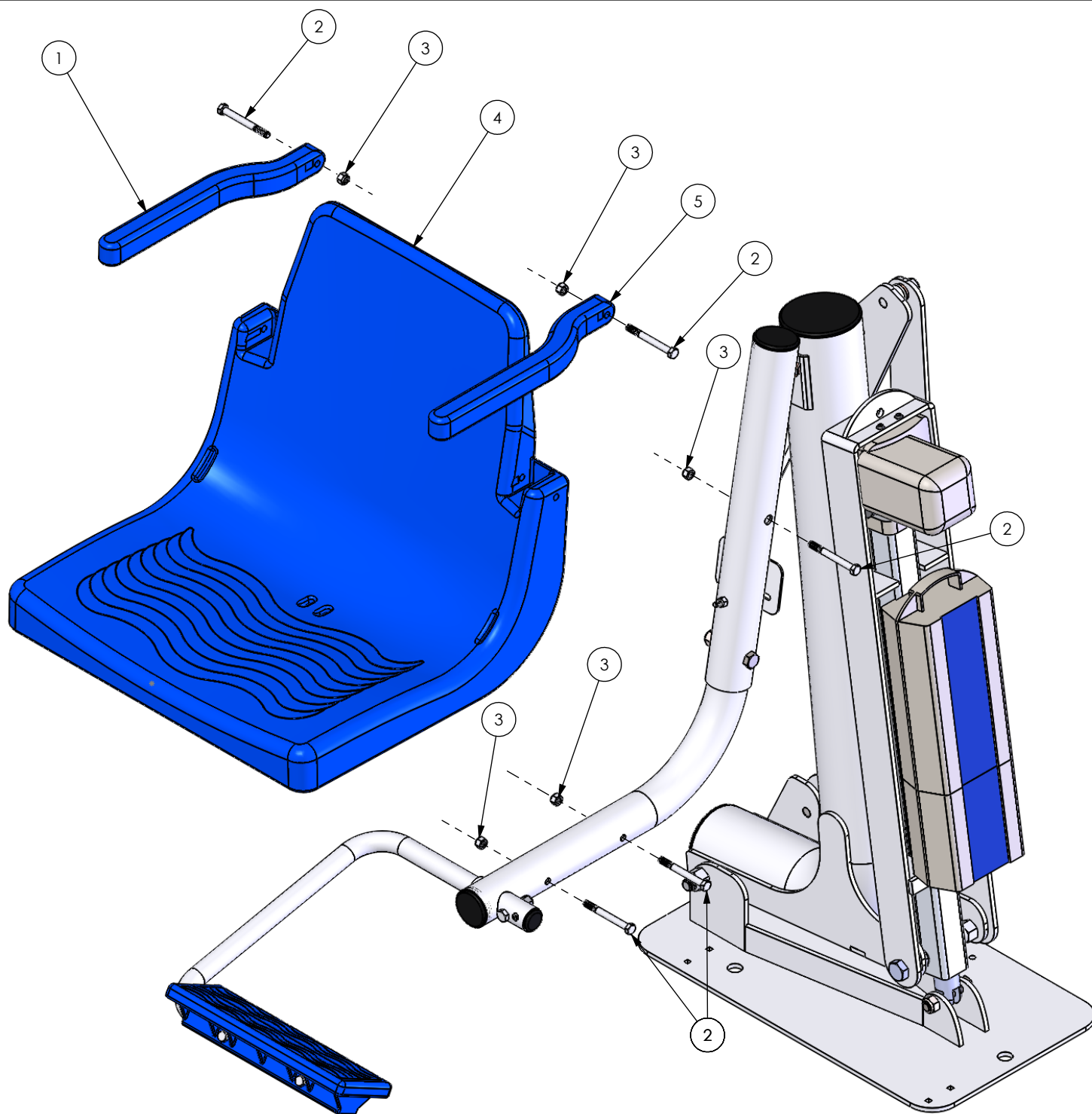
X. = ±.125
 XX. = ±.062
 XXX. = ±.031
 FRACTIONAL DIMENSIONS ±.125
 FILLET RADII .000 THRU ±.094
 HOLES .000 THRU .015
 ANGLES ± 1 DEGREE

PROPRIETARY AND CONFIDENTIAL

THE INFORMATION CONTAINED IN THIS DRAWING IS THE SOLE
 PROPERTY OF Global Lift Corporation. ANY REPRODUCTION IN
 PART OR AS A WHOLE WITHOUT THE WRITTEN PERMISSION OF
 Global Lift Corp. IS PROHIBITED.

684 N. Port Crescent, Suite C
 Bad Axe, MI 48413

TITLE: **C-375,P-375
 SEAT TUBE & SEAT
 LEVELER**
 DWG. NO. **SEAT TUBE & SEAT LEVELLING**



ITEM NO.	PART NUMBER	DESCRIPTION	QTY.
1	GLCSEATB-6R	ARM REST, RIGHT	1
2	BOLT313-18-3	BOLT	5
3	NUT313-18	NUT	5
4	GLCSEATB-1	SEAT	1
5	GLCSEATB-6L	ARM REST, LEFT	1

SCALE: 1:7 REV: 100 DATE: 10/15/2013 DWR: B.E.
 WEIGHT: LBS MACH WEIGHT: LBS APVD BY: J.I.

DO NOT SCALE DRAWING
 UNLESS OTHERWISE SPECIFIED
 DIMENSIONS ARE IN INCHES
 TOLERANCES ARE:

X. = ±.125
 XX. = ±.062
 XXX. = ±.031
 FRACTIONAL DIMENSIONS ±.125
 FILLET RADII .000 THRU .094
 HOLES .000 THRU .015
 ANGLES ± 1 DEGREE

PROPRIETARY AND CONFIDENTIAL

THE INFORMATION CONTAINED IN THIS DRAWING IS THE SOLE
 PROPERTY OF Global Lift Corporation. ANY REPRODUCTION IN
 PART OR AS A WHOLE WITHOUT THE WRITTEN PERMISSION OF
 Global Lift Corp. IS PROHIBITED.



684 N. Port Crescent, Suite C
 Bad Axe, MI 48413

TITLE: C-375,P-375
 SEAT & ARM RESTS

DWG. NO.
 SEAT & ARM RESTS