

SDX2 HIGH FLOW SAFETY DRAIN

WHEN SAFETY MATTERS MOST OF ALL.

THE ORIGINAL SUMPLESS
VGB COMPLIANT
HIGH FLOW SAFETY DRAIN



SDX₂[®]
HIGH FLOW SAFETY DRAIN



SDX₂

HIGH FLOW SAFETY DRAIN

SDX2 - THE HIGH PERFORMANCE SAFETY DRAIN BECAUSE POOL SAFETY IS ALWAYS PARAMOUNT.

SDX2 is a high flow suction outlet suitable for use as a wall fitting, or as a floor fitting when debris removal is not a concern. Available for **concrete**, **vinyl** and **fiberglass** pools, SDX2 performs at a very high flow rate while operating at one of the lowest velocity ratings in the industry. SDX2 boasts a flow rating of 188 gpm on the floor and 154 gpm on the wall.



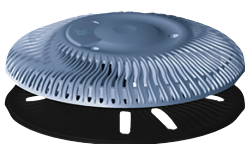
SDX2 CONCRETE

For new construction or remodel



SDX2 VINYL

No sump required



SDX2 RETRO

Eliminates the need to chisel out a sump

FEATURES AND BENEFITS

- **NO SUMP REQUIRED = TIME SAVED.** No need to field fabricate a sump to meet the '1.5 times the pipe diameter' requirement.
- **Low velocity** 1.396 feet per second at the maximum (188 gpm) flow rating.
- Patented ribbed design achieves very high flow via 60 independent flow partitions.
- Approved as a bulkhead fitting as the safety is in the cover and backplate.
- Anti-vortex center shield blocks contact with direction suction.
- **SDX2** comes with a plaster ring for new applications.
- **SDX2 Retro** comes with adaptable backplate to retrofit suction fittings up to 10" in diameter.
- Great for use with water features.
- Life in years = 5 years installed
- Available in colors to complement any interior surface

MEETS NATIONAL ANTI-ENTRAPMENT REQUIREMENTS

VGB 2008 Compliant. ANSI/APSP- 16 2011 • IAPMO tested and certified; a nationally recognized testing laboratory (NRTL) accredited by ANSI • USPC (uniform swimming pool, spa and hot tub code) compliant • IRC (International Residential Code), section 106.2 suction fittings – compliant

# drains	Maximum Floor: Floor	Maximum Floor: Wall
1 SDX2 drain	188 GPM (711 LPM)	154 GPM (582 LPM)
2 SDX2 drains	188 GPM (711 LPM)	154 GPM (582 LPM)
3 SDX2 drains	282 GPM (1066 LPM)	231 GPM (873 LPM)
4 SDX2 drains	376 GPM (1422 LPM)	308 GPM (1164 LPM)

WARNING: SDX2 and SDX2 Retro must be installed in accordance with Paramount's written instruction manual, and in conformity with applicable Federal, State, Local and Swimming pool industry building and safety codes. US and Foreign patents and patents pending see www.1paramount.com/about/patents/

