



ChemStar®

CH200 CHLORINE/BROMINE OFFLINE CHLORINATOR

FEATURES:

- No special venting required.
- Completely enclosed – no escaping gases.
- Positive external no clog control valve.
- Feeder automatically lowers the water level so tablets are not soaking during the pump's off-period, allowing more efficient use of tablets.
- Feeds sanitizer directly to pool or spa – no damage to equipment.
- All parts are replaceable.
- To prevent over-feeding during use, completely close the control valve. The built-in check valve will prevent chemicals from being fed into the pool or spa.

Your ChemStar® chlorinator is the most efficient and trouble-free automatic chlorinator you can buy, but it can also be dangerous to you and your equipment. Please follow instructions exactly and heed all cautions.

READ AND FOLLOW ALL INSTRUCTIONS

It is important to read all information **BEFORE** proceeding with the installation. This information will guide you in installing your chlorinator properly and help you avoid problems due to improper installation.

⚠ WARNING IF YOUR POOL OR SPA HAS COPPER PLUMBING . . . STOP!!

Never install the chlorinator into copper plumbing, as pipe damage will occur. (See *Equipment Safety CAUTION* sheet enclosed).

NOTE: If heaters are used, a fireman's switch or equivalent must be installed to prevent possible damage and improper operation of check valve and other equipment subject to heat damage.

INSTALLATION INSTRUCTIONS

⚠ WARNING MAKE SURE ALL PUMPS AND TIMER SWITCHES ARE IN THE OFF POSITION.

WHERE TO INSTALL YOUR CHLORINATOR

The CH200 chlorinator is designed for EXISTING pools or spas or new pools or spas where conditions are such to make permanent installation into the return line impractical. The outlet line must be installed after the heater. If your pool does not have a heater, then it must be installed after the filter.

⚠ WARNING Damage to your heater could result if highly chlorinated water flows through it. If your pool has a heater, install the line to the feeder between the filter and heater. If your pool does not have a heater, install the inlet line between the pump and the filter. Refer to installation drawings on page 4 for your particular condition. Choose a site where the feeder can be installed in a vertical position. Always install as far from any metal equipment as practical since fumes, etc., can cause corrosion. If an optional corrosion-resistant check valve is required, refer to installation instructions before next step.

BASIC PLUMBING INSTALLATION INSTRUCTIONS

INSTALLATION INSTRUCTIONS

Position feeder close to filter and cut tubing to desired lengths. Be careful to cut ends straight.

ATTACH INLET LINE TO FEEDER

Screw control valve into side of feeder. Use teflon tape to seal threads. Push compression nut over tubing and then push tubing onto tapered end of control valve. Tighten nut firmly by hand.

ATTACH OUTLET LINE TO FEEDER

Screw combination check valve elbow into bottom of feeder. Refer to drawing on other side. Use teflon tape to seal threads. **CAUTION** – do not overtighten as damage to threads or check valve could occur. Push compression nut over tubing end. Then push tubing onto tapered end of elbow. Tighten nut firmly by hand.

INSTALL INLET LINE IN PLUMBING – Line to side of feeder

Turn off pump and timer switches. Drill $\frac{3}{8}$ " hole in plumbing, remove burrs and install saddle clamp assembly. See drawing on other side. Attach inlet line by first pushing compression nut over tub end. Then push tube onto tapered end of tube fitting. Tighten nut firmly by hand.

INSTALL OUTLET LINE IN PLUMBING – Line from feeder

Drill $\frac{3}{8}$ " hole in plumbing (AFTER the heater – if no heater, drill after filter) and remove burrs. See drawing on other side. Install saddle clamp assembly. Attach outlet line by first pushing compression nut over tube end. Then push onto tapered end of tube fitting. Tighten nut firmly by hand. Installation is now complete.

OPERATING INSTRUCTIONS

WARNING

Before chlorinator start-up, your pool should be properly conditioned and the residual should be 1.0 to 1.5 ppm, (bromine 2.0-4.0 ppm). The water in a newly filled pool should be properly conditioned to ensure maximum effectiveness of the chlorinator. Consult your local dealer for water conditioning information for your area.

1. Remove cap of chlorinator and fill with proper size tablets. For pools: 1" or 3" diameter tablets. For spas: 1" diameter tablets in optional spa chamber.
2. Making sure O-ring is clean, lubricated with silicone and is in place, replace cap. Hand tighten only.
3. Turn on pump and timer switches for a minimum of six to eight hours.
4. Adjust control valve according to your pool/spa size. Use a test kit to determine the chemical residual. It is recommended that the chemical residual be checked daily for the first five days. Remember . . . hot days, higher water temperature or increased pool/spa activity will cause your pool/spa to use more chlorine. When possible, increase the feed rate a day or two in advance. Because the chlorine demand in your pool/spa varies and is dependent on many factors (sunlight, bather load, water temperature, etc.), your valve setting may have to be changed from time to time to adjust to these conditions. For example, the winter setting may be #2 while the summer setting is #3. Check the chlorine residual daily to find the ideal setting. Higher numbers dispense more chemicals. Small, gradual changes are imperative for control.

HOW TO RECHARGE CHLORINATOR

1. Turn control valve to the closed position. Shut off pump.
2. Wait one minute. This will allow water and fumes to drain from chlorinator.
3. Leave control valve closed and turn on pump. The check valve will prevent water from entering the chlorinator.
4. Remove cap and fill with proper size tablets or sticks. (See Operating Instructions #1)
5. Making sure O-ring is clean, lubricated with silicone and is in place, replace cap. Hand tighten only.
6. Open control valve to original setting. Inspect inlet and outlet line each time chlorinator is recharged. Replace lines yearly if necessary.

READ CAREFULLY

DANGER

This chlorinator is designed to use only CLEAN Trichlor-s-trizinetriene OR CLEAN Bromine tablets – slow-dissolving type. Never use dirty tablets. **Under no circumstances mix** Trichlor or Bromine with Calcium Hypochlorite, with other forms of concentrated chlorine or with other chemicals. Keep inside of chlorinator clean of dirt and debris at all times. **Fire and/or explosion may result.**

DANGER

NEVER use oils or grease to lubricate O-ring. Oil in contact with Trichlor OR Bromine may result in **FIRE**. Lubricate O-ring with silicone O-ring lubricant ONLY, available at your dealer. If shock treatments or algaecides containing chemicals other than sanitizer tablets in chlorinator must be used, turn off chlorinator OR remove tablets until the shock or algae treatment is complete and all granules have dissolved. Failure to do so may result in granules mixing in chlorinator, causing **FIRE AND/OR EXPLOSION**. The shock or algae treatment dissolved in water is safe with tablets. If you are not the original owner of this chlorinator, not sure which chemicals were used, or if dirt and/or debris is inside chlorinator, be **SAFE** and flush thoroughly with fresh water. **Caution should be used when removing cap. Do not inhale fumes.**

DANGER

Calcium hypochlorite is not to be used in any form. Use of chemicals other than listed by manufacturer may be hazardous.

BELOW WATER LEVEL INSTALLATION

Chlorinator should be installed above water level whenever practical. If installed below water level, a drain valve must be installed to prevent spillage and dangerous splash back of highly chlorinated water during recharging. Drill and tap a 1/4" MPT hole at the same level the control valve is located. Make sure no water or tablets are inside the chlorinator before drilling. Install optional drain valve or suitable chemical-resistant drain valve.

BELOW WATER LEVEL RECHARGING INSTRUCTIONS

1. Shut off pump and timer switches.
2. Shut off control valve.
3. Place a clean container under drain and open drain valve.
4. Exercise extreme caution when opening or servicing chlorinator. Do not inhale fumes. Wear protective gear. Remove cap. Water will now drain from chlorinator. Empty container back into pool or spa.
5. Close drain valve. Fill with proper size tablets or sticks.
6. Making sure O-ring is clean, lubricated with silicone and is in place, replace cap.
7. Turn on pump and timer switches.
8. Reset control valve to original setting. Inspect inlet and outlet line each time chlorinator is recharged. Replace lines yearly if necessary.

EQUIPMENT SAFETY

PLEASE READ CAREFULLY

Since most pool plumbing is not airtight, and a mixture of air and chlorine is highly corrosive to metals, it is important to protect these items from corrosion in the **OFF** period when no circulation is taking place. (There is no chance for chlorine corrosion when the circulating system is in operation.)

Of course, corrosion or erosion of metal components can still occur independently of any chlorinator installation for the following reasons:

1. Water velocity too high.
2. Water pH less than 7.2.
3. Total alkalinity less than 100 PPM.

If your pool or spa has any of the following equipment, special plumbing procedures must be followed for safe operation:

1. Brass or bronze gate, rotary or backwash valves.
2. The preceding valves constructed of PVC or other plastic material with metallic shafts.
3. Filters, heaters, heat exchanges or other items with metallic tanks, shafts, coils or tubes.
4. **NOT FOR USE IN COPPER PLUMBING.**

Installation of the OPTIONAL positive seal, corrosion-resistant check valve shown on page 4 will prevent the backflow of corrosive liquids and gases that can damage equipment containing metallic components. Note: valve size and tubing size must match.

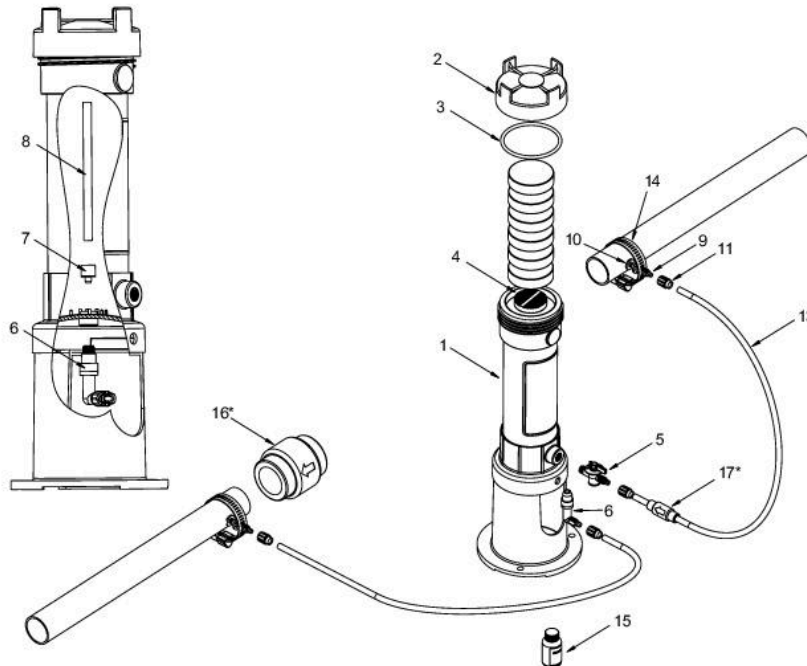


WARNING If your pool is equipped with a permanent built-in pool-cleaning system, damage could occur to that system if materials are not compatible with low pH Tri-Chloro chlorinators. Check with manufacturer for compatibility.

BROMINE STANDPIPE INSTALLATION

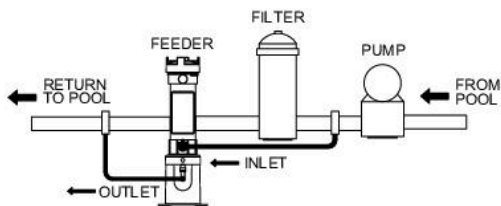
To increase erosion of small bromine tablets, install Bromine Standpipe as follows:

1. Insert standpipe adapter (7) into check valve (6) opening end at bottom of chamber.
2. Push end of 6" tube (8) into adapter opening.

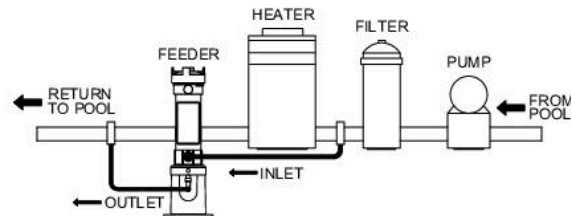


- 1 CH1041 Body assy with stand, offline feeder
- 2 CH1004 3" threaded cap
- 3 CH1009 O-ring cap, #343, viton
- 4 CH1029 Screen
- 5 CH1065 Control valve for offline feeder
- 6 CH1053 Check valve elbow offline feeder assy
- 7 CH1054 Standpipe adapter, off-line
- 8 CH1055 Standpipe, off-line, 3/8" x 6"
- 9 CH1056 Saddle tube fitting with nut
- 10 CH1057 Saddle gasket
- 11 CH1064 Compression nut
- 12 CH1058 1/4" NPT plug (optional)
- 13 CH1074 Tubing, 3/8" x 8'
- 14 CH1066 Saddle clamp
- 15 CH1048 Silicone lubricant for O-ring
- 16 Large CV 1-1/2"-2" corrosion resistant check valve (optional)*
- 17 Small CV 1/4" corrosion resistant check valve (optional)*

*IMPORTANT OPTION
SEE EQUIPMENT SAFETY SHEET



Typical installation without heater



Typical installation with heater

FEEDER INLET LINE

If pool/spa has heater, install between filter and heater. If no heater, install between pump and filter.

FEEDER OUTLET LINE

If pool/spa has heater, install after heater. If no heater, install after filter.



WARNING Do not install chlorinator into copper plumbing. Pipe damage could occur. Never install chlorinator before heater. Heater damage could occur.

NSF-listed for public or residential use in swimming pools, spas or hot tubs using Trichlor or Bromine and when used with a flow-indicating device. You may substitute Bromine tablets or sticks for Trichlor in this chlorinator. Do not mix. Calcium hypochlorite is not to be used in any form.

Technical Support: (877) 768-2717

ChemStar is a trademark and/or a registered trademark of AquaStar Pool Products, Inc. and/or its affiliated companies in the United States and/or other countries. Unless noted, names and brands of others that may be used in this document are not used to indicate an affiliation or endorsement between the proprietors of these names and brands and AquaStar Pool Products, Inc. Those names and brands may be the trademarks or registered trademarks of those parties or others.

