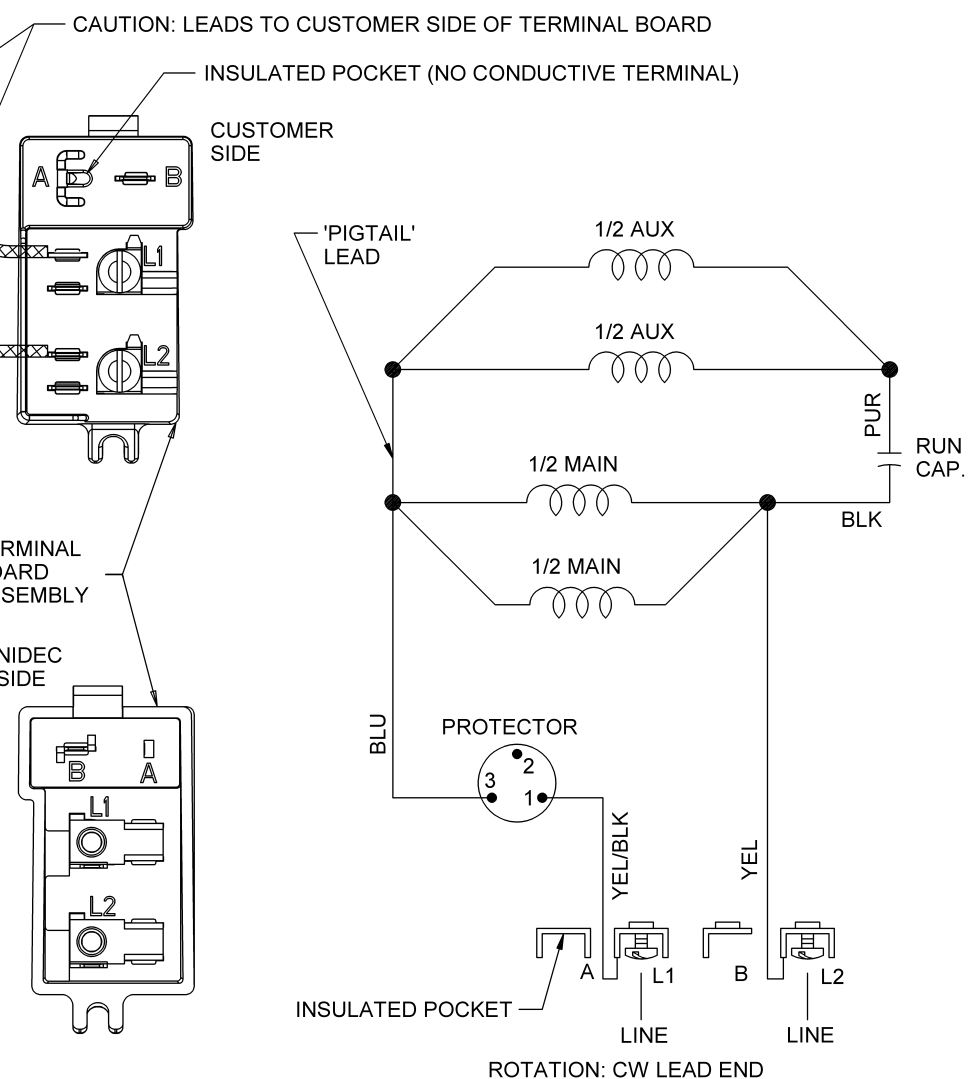


CAUTION: AUX SHIFTED 1 SLOT
CCW-LEAD END.
(PARALLEL MAIN POLES)
(PARALLEL AUX POLES)

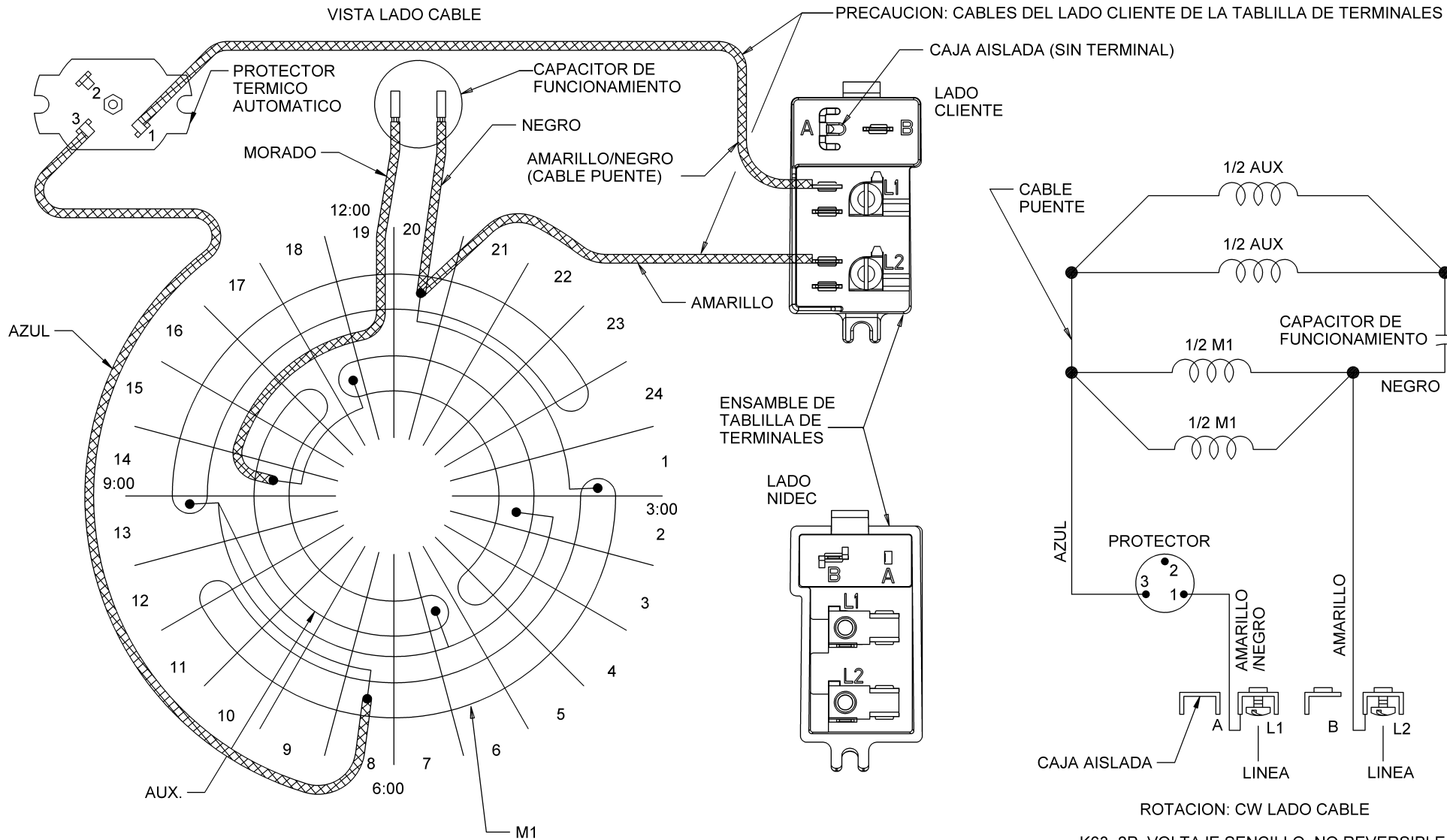


REFER TO SEIM 24-1 K63, 2P, SINGLE VOLT, NON-REV

| | | | | | | | | |
|----------|---|--|-----------------|--|--------------------------------|--------------------------|-----------------------------|----------------------------|
| REV A | REVISION DESCRIPTION FOR: C8396-06 CHANGED MARK FROM EMERSON TO NIDEC CHANGED FROM MICROSTATION TO SOLID EDGE | SCALE NONE | UNITS INCHES | TITLE DIAGRAM OF CONNECTIONS | NIDEC MOTOR CORPORATION | | | |
| | MATERIAL: MUST BE COMPLIANT TO ROHS DIRECTIVE EU 2002/95/REC AND REGULATION EC 1907/2006 (REACH) AS AMENDED | TOLERANCES ON DIMENSIONS (UNLESS OTHERWISE SPECIFIED) INCHES $\pm .015$ | mm | | | ISSUED BY E. VICENCIO | APPROVED BY J.I. SALAZAR | REVISION DATE 24-SEP-13 |
| | | ANGLES $X^\circ = \pm 1^\circ$ | | CODE D04 | DWG NO. 739689 | REV A | SHEET NUMBER 1 OF 2 | DWG SIZE B |

NIDEC CONFIDENTIAL
NIDEC MOTOR CORPORATION 23-Sep-13

VISTA LADO CABLE



PRECAUCION: AUX GIRADO 1 SLOT
CCW-LADO CABLE.
(POLOS EN PARALELO M1)
(POLOS EN PARALELO AUX)

NIDEC CONFIDENTIAL
NIDEC MOTOR CORPORATION 23-Sep-13

REV A

| | | | |
|---|--|------------------|---------------------------------|
| REVISION DESCRIPTION FOR: C8396-06 CHANGED MARK FROM EMERSON TO NIDEC CHANGED FROM MICROSTATION TO SOLID EDGE | SCALE NONE | UNITS INCHES | TITLE DIAGRAM OF CONNECTIONS |
| MATERIAL: | TOLERANCES ON DIMENSIONS (UNLESS OTHERWISE SPECIFIED) | INCHES ± .015 | ISSUED BY E. VICENCIO |
| | mm | mm | APPROVED BY J.I. SALAZAR |
| | ANGLES X°= ±1° | | REVISION DATE 24-SEP-13 |
| | | | CODE D04 |
| | | | DWG NO. 739689 |

MUST BE COMPLIANT TO ROHS DIRECTIVE EU 2002/95/REC
AND REGULATION EC 1907/2006 (REACH) AS AMENDED

| | |
|----------------------------|-----------------------------|
| NIDEC MOTOR CORPORATION | |
| ISSUED BY E. VICENCIO | APPROVED BY J.I. SALAZAR |
| REVISION DATE 24-SEP-13 | REVISION NUMBER A |
| SHEET NUMBER 2 OF 2 | DWG SIZE B |