

32" CHANNEL DRAIN PINHOLE SUCTION OUTLET COVER WITH MUD FRAME



**VGBA CERTIFIED
SPECIFICATIONS**

Open Area
13.46 in²

For SOFA Specific Flow Ratings and
specifications please scan QR code or visit
www.aquastarpoolproducts.com/flowcode



FEATURES

All components meet or exceed APSP/ANSI/ICC-16 2017 and NSF/ANSI 50-2009a national standards and ASTM G154 UV testing exposure

Manufactured from superior UV-resistant engineered polymers

Includes disposable "dog bone" supports to retain shape during all phases of construction

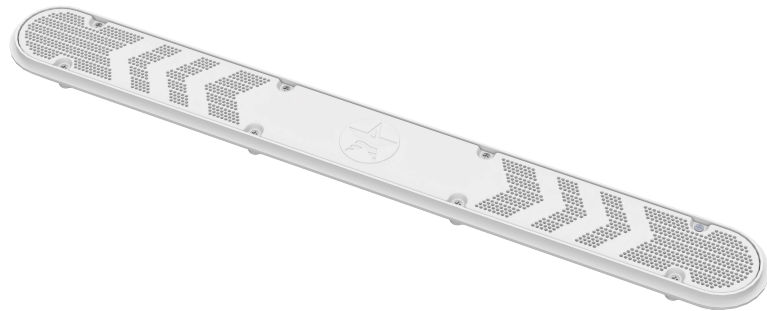
#316 stainless steel screws

Online product support including downloadable CAD files, General Certificate of Conformity, third-party certificate, installation instructions and more

Replace drain cover every five years from the date of installation

12 per case

Unblockable!



For field-fabricated sump (concrete pools)
Part # 32CDPHFRxxx

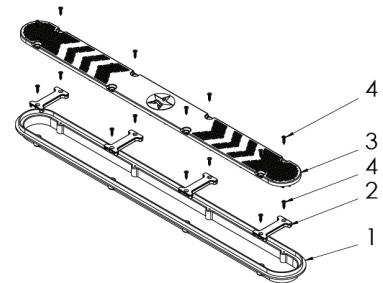
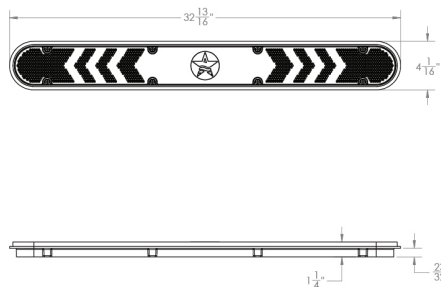
STANDARD COLORS

- 32CDPHFR101 – White
- 32CDPHFR102 – Black
- 32CDPHFR103 – Light Gray
- 32CDPHFR105 – Dark Gray

Also available as frame only, 32CDFRxxx
12 per case

Also available cover only without sump/frame, p/n 32CDPHNFxxx
24 per case

VGBA 2017 Compliant



1. 32" Channel Drain Frame
2. 32" Channel Drain Frame Support "Dog Bones", Qty 4
3. 32" Channel Drain "Pinhole" Cover
4. 10 x 3/4" Flat Head Phillips, 316 SS, Qty 16

Dog Bones and Screws to be Removed After Gunite/Plaster Application

P 877-768-2717 F 877-276-POOL Outside the US: P +1-949-336-1940 F +1-949-336-1940
info@aquastarpoolproducts.com www.aquastarpoolproducts.com