

## AUSTRALIAN RETURN FITTING WITH ADJUSTABLE EYEBALL 1½" KNOCK-IN

### FEATURES

Knocks into 1½" pipe, no glue necessary

Self-leveling for out-of-square pipes

Flange camouflages pipe and surface construction variations

Adjustable eyeball available in three orifice sizes (1", ¾", ½")

Manufactured from engineered polymer UV-resistant polypropylene material







500 per case

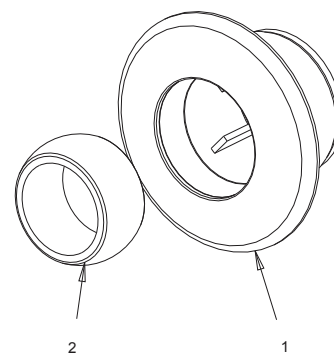
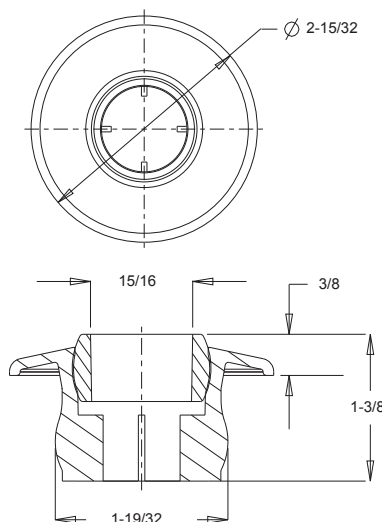
Additional orifice size suffix: ¾"-B, ½"-C (i.e. 401B = white ¾" orifice)



Part # 4xx

### STANDARD COLORS

	101		104
	102		105
	103		108



1. 1.5" Australian return knock-in fitting  
2. 1.5" Australian return fitting eye ball