

STANDARD COLORS 01 02 03 04 05 08

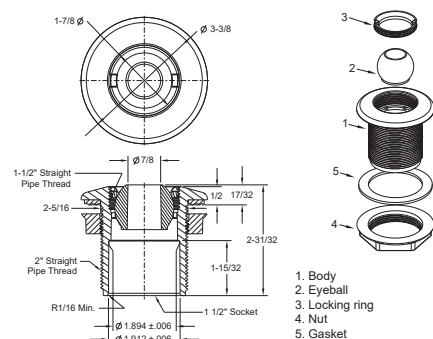
Large Extended 2" Return Fitting with Gasket/Nut for Vinyl or Steel

FEATURES

Fits 2" thread or 1½" slip
1½" thread in front face
Includes gasket and locking nut for vinyl or steel installations
Includes removable eyeball and nut
Manufactured from UV-resistant ABS material
25 per case



Part # 1020Fxxx



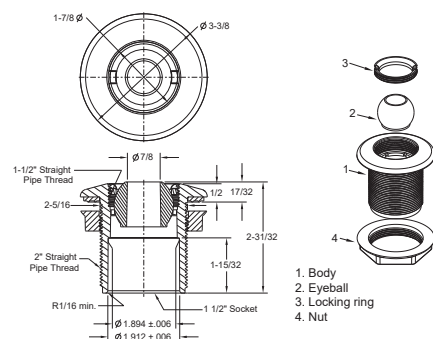
Large Extended 2" Return Fitting with Locking Nut Fiberglass

FEATURES

Fits 2" thread or 1½" slip
1½" thread in front face
Extended wall fitting allows for variations in fiberglass depth
Includes locking nut for fiberglass installations
Includes removable eyeball and nut
Manufactured from UV-resistant ABS material
25 per case
Optional Wall Angle Adapter
p/n AWAxxx shown below



Part # 1020TSxxx



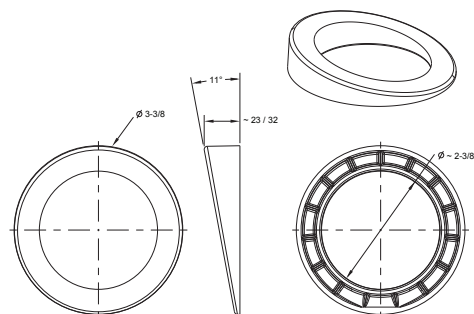
Angle Wall Adapter for Fiberglass (Set of Two)

FEATURES

Installs between a fiberglass pool's sidewall and return fitting to change the water direction angle
For use with 1020TSxxx 2" return fitting shown above
200 per case



Part # AWAxxx



Gasket for Vinyl, Fiberglass or Steel

FEATURES

Fits 2" or 2½" threaded fittings
Ideal for vinyl, fiberglass and steel installations
Manufactured from superior engineered UV-resistant engineered polymers
Size p/n:
20GASKET – 2" GASKET
25GASKET – 2½" GASKET
25 per case



Part # xxGASKET

