

20" FULL CIRCLE® SUCTION OUTLET COVER AND ONE-PORT MANUFACTURED SUMP



**VGBA CERTIFIED
SPECIFICATIONS**

**Open Area
42 in²**

For SOFA Specific Flow Ratings and
specifications please scan QR code or visit
www.aquastarpoolproducts.com/flowcode



FEATURES

For concrete pools and spas

One threaded port:

Bottom 2½" Spigot x 2" Socket x 2" NPT

Certified, Listed, and Labeled in conformance
with APSP/ANSI/ICC-16 2017 and NSF/ANSI/
CAN 50 standards

Disposable plaster shield prevents debris
from entering sump and retains shape during
pool finish

Water stop around edges prevents water leaks

Unique circle design is filled with
plaster/pebble to blend into pool finish

Manufactured superior UV-resistant PVC sump
#316 stainless steel screws

Online product support including
downloadable CAD files, General Certificate of
Conformity, third-party certificate, installation
instructions and more

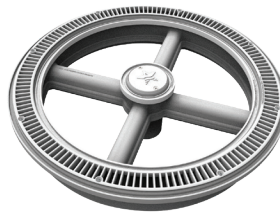
Replace the 20" Round Anti-Entrapment
Suction Outlet Cover and Round Center Cap
every five years.

NOTICE: White assemblies will come with
white PVC sump, all other colors are shipped
with medium Gray.

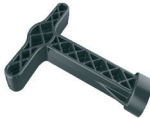
1 per case

U.S. Patents www.aquastarpoolproducts.com/patents

Unblockable!
No second drain or SVRS required



Optional Self-Contained
Hydrostatic Valve
p/n HVCxxx

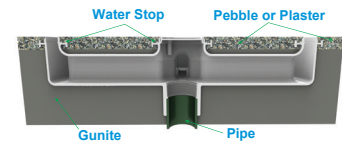


Optional T-Wrench
p/n FC16102

Part # FCxxx



Top view of completed
Full Circle® drain



Unique water stop
protects against leaks

STANDARD COLORS

- ☐ FC101 – White
- ☐ FC102 – Black
- ☐ FC103 – Light Gray
- ☐ FC105 – Dark Gray

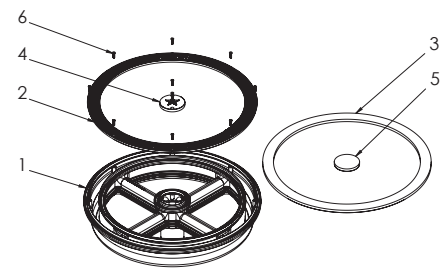
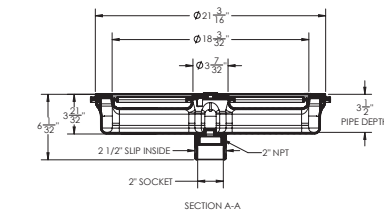
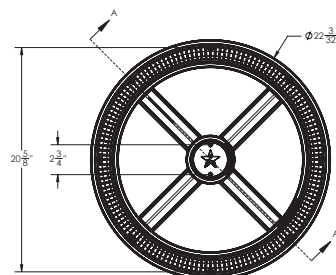
Also available as plaster shields only,
p/n FC23109, 10 per case

Center Logo Cap and Screws also sold
separately, p/n FC08Kxxx, 25 per case

Full Circle Drain Cover, Center Cap and
Screws, p/n FC20xxx, 40 per case

Drain Cover, Sump, Hydrostatic Valve with
Collector Tube, p/n FCHVxxx, 1 per case

VGBA 2017 Compliant



1. Sump Body, 20" Full Circle
2. Drain Cover, 20" Full Circle
3. Plaster Shield, Outer, 20" Full Circle
4. Center Cap, 20" Full Circle
5. Plaster Shield, Inner, 20" Full Circle
6. 10-32 X 3/4", Flat Head Phillips Screw, 316 SS, Qty 10
7. 2" NPT Plug

P 877-768-2717 F 877-276-POOL Outside the US: P +1-949-336-1940 F +1-949-336-1940
info@aquastarpoolproducts.com www.aquastarpoolproducts.com CS049-013125