

bobé

Cannon Scupper

Quote & Order Form

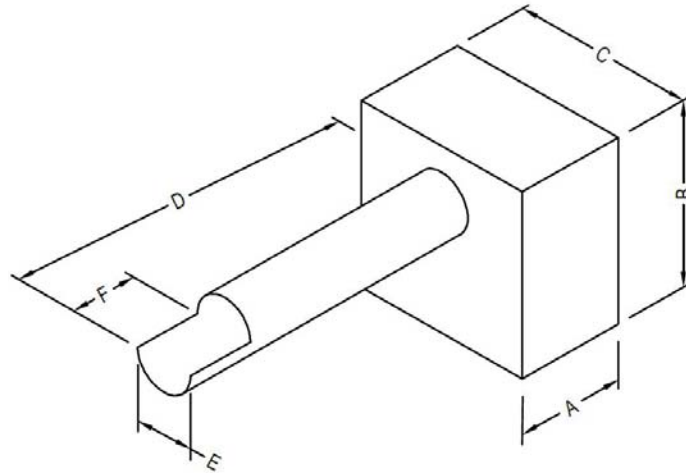
WATER & FIRE FEATURES

CHOOSE "E" DIMENSION:

STANDARD (A=3" B=5" C=5" D=12")

1" 1.5" 2"

2.5" 3" 3.5"



OR FILL IN CUSTOM SIZES:

TO REMOVE BAFFLE CHAMBER, USE

"N/A" FOR A-C

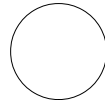
A: _____ D: _____

B: _____ E: _____

C: _____ F: _____

OPTIONAL ESCUTCHEON PLATE:

ROUND



SQUARE



POINTED



CHOOSE INLET LOCATION:

BACK INLET (STANDARD)

BOTTOM INLET

CHOOSE MATERIAL:

SMOOTH COPPER

STAINLESS STEEL

HAND HAMMERED COPPER

WALNUT

MIDNIGHT

SLATE

TERRA

QUANTITY: _____

NOTES: STANDARD INLET IS 1.5" FEMALE IN BACK. FLOW RATE IS 15-20 GPM/FT. GROUNDING LUG LOCATED ON BACK. STAINLESS STEEL NOT RECOMMENDED FOR SALT WATER ENVIRONMENTS. PATINA OPTIONS ARE APPLIED TO COPPER AND POWDER COATED. ALL SALES FINAL.

NAME:		EMAIL:		PURCHASE ORDER #/JOB NAME:
COMPANY:		PHONE:		