



PlugInPool® renovation kit

Underwater socket

Ref : PF10R14U

Table of Contents

1. Description	1
2. Adaptor installation	2



Read these instructions carefully before installing, commissioning and using this product.

1. Description

This renovation kit able you to install a PlugInPool™ socket on an existing installation. It is compatible with these niches :

Pentair™	620004 / 78210400 / 78210500 / 78210600 / 78210700 / 78232400 / 78232500 / 79206700
Hayward™	SP0604C / SP0600U / SP0607U / SP0608U
Jacuzzi™	94131234
Jandy™	PLNICLRG / SSNICLRG1R / SSNICLRG1S / PLNICVFLRG

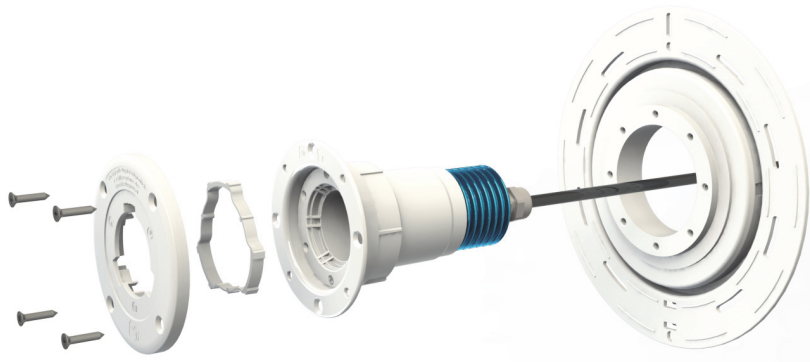
PF10R14U/G

PF10R14U/W

It can comes with a white (Ref PF10R14U/W) or a grey (Ref PF10R14U/G) bezel.



2. Adaptor installation



You need to replace the light's bezel by the one provided with the adaptor (see light's manual for instructions).

