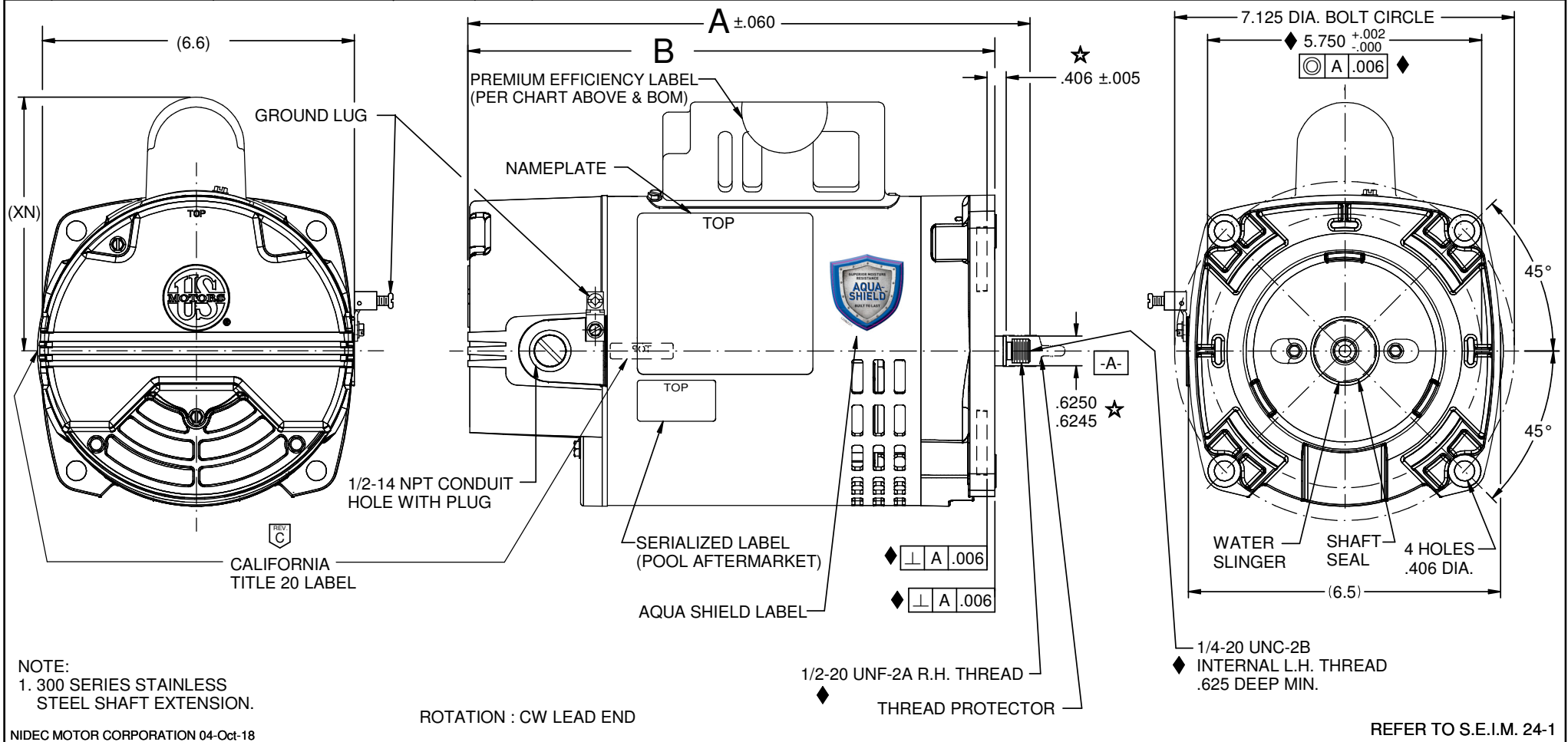


| VAR | MODEL | CUSTOMER | CAT. NO. | A | B | XN | THP | VOLTS | AMPS | HZ | RPM | PREM. EFF. LABEL | CALIFORNIA TITLE 20 LABEL | DESCRIPTION / REMARKS |
|-----|---------------|------------------|----------|-------|-------|------|-----------|-------|----------|----|-----------|------------------|---------------------------|-----------------------------------|
| 001 | B63GZABL-1032 | POOL AFTERMARKET | ASB2980 | 13.71 | 12.99 | 5.28 | 1.25/0.20 | 230 | 5.8/1.2 | 60 | 3450/1725 | YES | COMPLIANT | 2 CAPACITOR COVER MOUNTING SCREWS |
| 002 | B63GZABM-1033 | POOL AFTERMARKET | ASB2982 | 13.96 | 13.24 | 5.28 | 1.65/0.26 | 230 | 7.4/1.4 | 60 | 3450/1725 | YES | COMPLIANT | 2 CAPACITOR COVER MOUNTING SCREWS |
| 003 | B63GZABN-1034 | POOL AFTERMARKET | ASB2983 | 14.46 | 13.74 | 5.51 | 2.25/0.38 | 230 | 9.2/2.1 | 60 | 3450/1725 | YES | COMPLIANT | 4 CAPACITOR COVER MOUNTING SCREWS |
| 004 | B63GZABP-1035 | POOL AFTERMARKET | ASB2984 | 14.96 | 14.24 | 5.51 | 2.60/0.43 | 230 | 10.6/2.4 | 60 | 3450/1725 | YES | COMPLIANT | 4 CAPACITOR COVER MOUNTING SCREWS |



| | | | | | | | | | | |
|-----------------------------------|---------------------------------|---|--|--|--|--|--|--------------------------------|--|-----------|
| NIDEC MOTOR CORPORATION 04-Oct-18 | | REVISION RECORD FOR: E32395 | | NIDEC MOTOR CORPORATION INFORMATION DISCLOSED ON THIS DOCUMENT IS CONSIDERED PROPRIETARY AND SHALL NOT BE REPRODUCED OR DISCLOSED WITHOUT WRITTEN CONSENT OF NIDEC MOTOR CORPORATION | | | | REVISION DATE: 04-OCT-18 | | |
| CALIFORNIA TITLE 20 LABEL ADDED. | | COMPLIANT COLUMN ADDED. | | | | | | TITLE: CUSTOMER DETAIL DRAWING | | CODE: V02 |
| ISSUED BY: E. REYES | ENGINEER APPROVED: S. SCHINZING | TOLERANCES ON DIMENSIONS (UNLESS OTHERWISE SPECIFIED) | | INCHES: .XX = ±.010, .XXX = ±.005 mm: _____ ANGLES X° = ±1° | | | | | | |

V02_NMCB (MAR-2014)

SOLIDEDGE