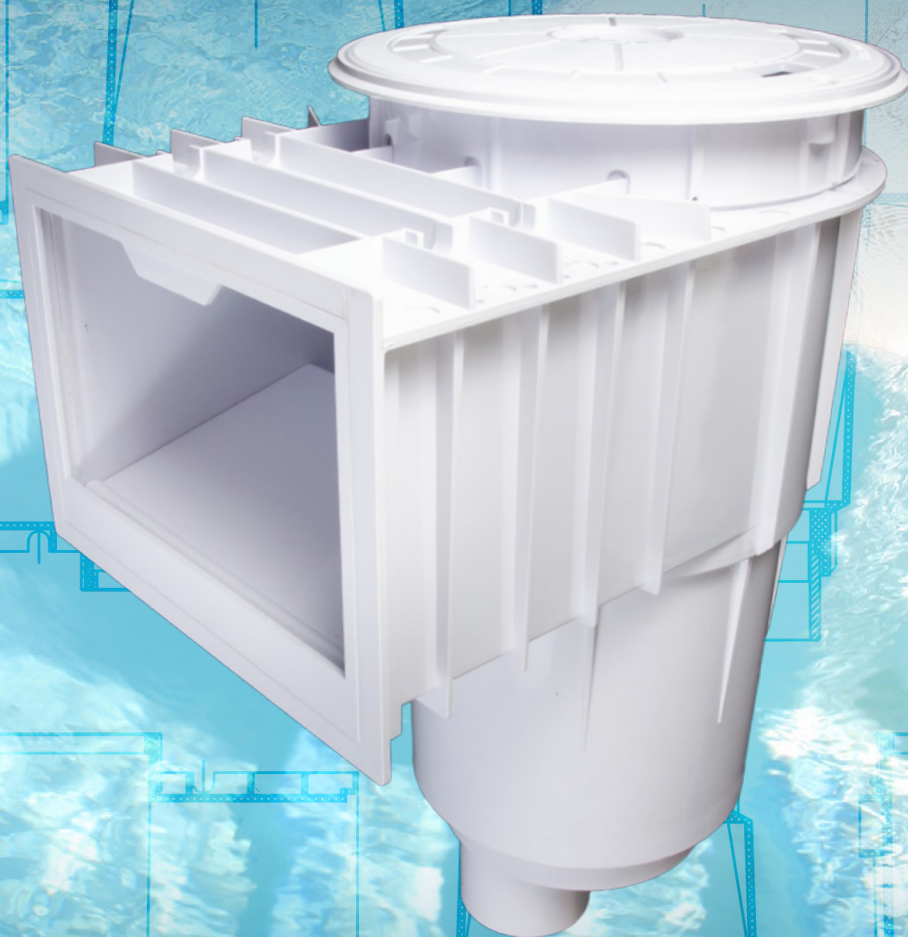


CMP POOL
PRODUCTS

GUNITE SKIMMERS GUIDE



c-m-p.com/select-a-skimmer

SKIMMER OPTIONS

CMP manufactures a premier selection of skimmers for in ground gunite pools. Our skimmers are available in a variety of colors, materials and kits to ensure the perfect skimmer for every pool.

ABS UNIBODY OR ABS WITH PVC PORTS

- ABS Unibody is one solid unit with no glue joints
- ABS Unibody requires ABS to PVC glue
- Unibody styles also available with FIP ports
- ABS with PVC port skimmers use regular PVC glue

CONFIGURATION OPTIONS

- PORTS: Single or Dual Ports
- FITTING TYPE: FIP, Socket, or Socket/Spigot
- LID/COLLAR: Round and Square Options

COLOR COMBINATIONS

- White, Gray, Black & Tan color combinations
- Available in solid colors with matching cover (lid/collar) & body
- Solid colors create a seamless look with full color front face and throat
- Available with white body & color cover
- Color cover includes lid and collar
- ABS/PVC available without cover for custom lids



FLOAT VALVE (AKA MUSHROOM DIVERTER)

Why Float Valves?

- Float valves automatically regulate skimmer flow, sending more water to the main drain for better circulation.
- If the water level drops below skimmer level, the float valve shuts off the skimmer to prevent the pump running dry.

FLOWSKIM™ BASKET

Why Flowskim?

- Aids in basket removal without touching dirty, wet debris
- Provides a flow path even when the skimmer is full, protecting the pump from running dry.
- Side handle orientation allows you to empty the basket while keeping your hands clear of the debris.
- U.S. and International Patents



POOL DEFENDER® WATER BONDED SKIMMERS

Since 2008 the National Electrical Code (NEC) has mandated that pool water must be electrically bonded, not just metals in the structure of the pool itself. Typically pool water is bonded at the light. With the advent and growing popularity of "nicheless" LED lights, a new solution is required. Every pool has a skimmer, so you can easily meet electrical code requirements with the Pool Defender® In Ground Skimmer with an integrated water bond.

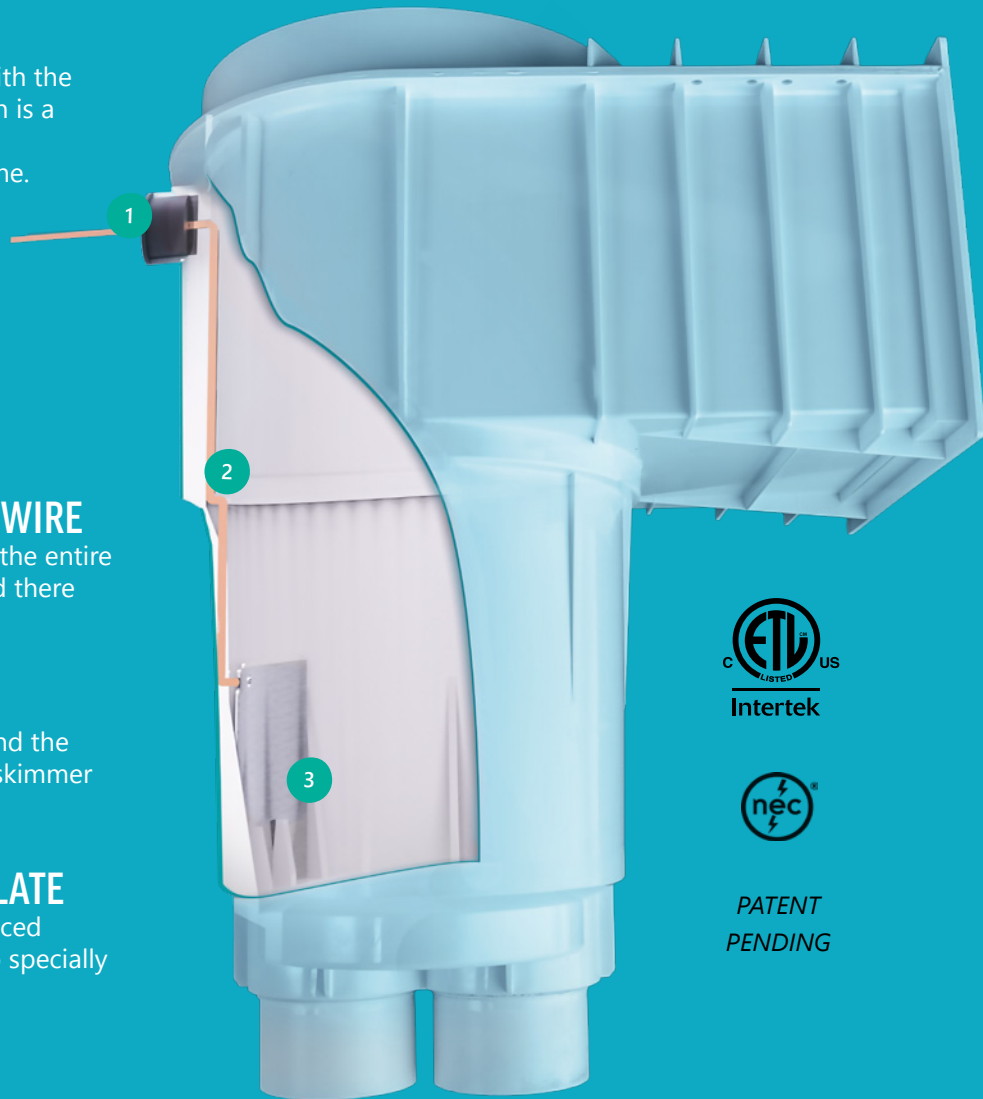


- Bonding plate is in constant contact with the water even when the pump is off which is a key water bonding requirement.
- No bond wire holes below the water line.
- ETL Certified
- Meets NEC2008 680.26(C) as a water bonding device.
- Conforms to UL 1081, UL 1563, CAN/CSA-C22.2
- Also available with added zinc anode for salt water corrosion protection.

1 CONNECTS TO POOL BONDING WIRE
Attach to the bonding wire to protect the entire pool. A rubber seal prevents leaks, and there are no holes below the water line.

2 EMBEDDED COPPER WIRE
Copper bonding wire runs safely behind the skimmer basket to the bottom of the skimmer body.

3 STAINLESS STEEL BONDING PLATE
A 304 Stainless Steel plate is safely placed behind the pool basket, and locks into specially designed grooves.



Pool Defender™ Skimmer "Cut-away" View



PATENT
PENDING

FREQUENTLY ASKED QUESTIONS

What is the purpose of water bonding?

Water bonding makes the pool safer. Bonding reduces the risk of electric shock, potentially protecting swimmers from serious injuries.

Why is water bonding important if the pool structure is also bonded?

Stray electrical current can still enter the pool water that is not always in contact with the bonded pool structure. The Pool Defender™ skimmer conveniently ties into the structural bonding of the pool.

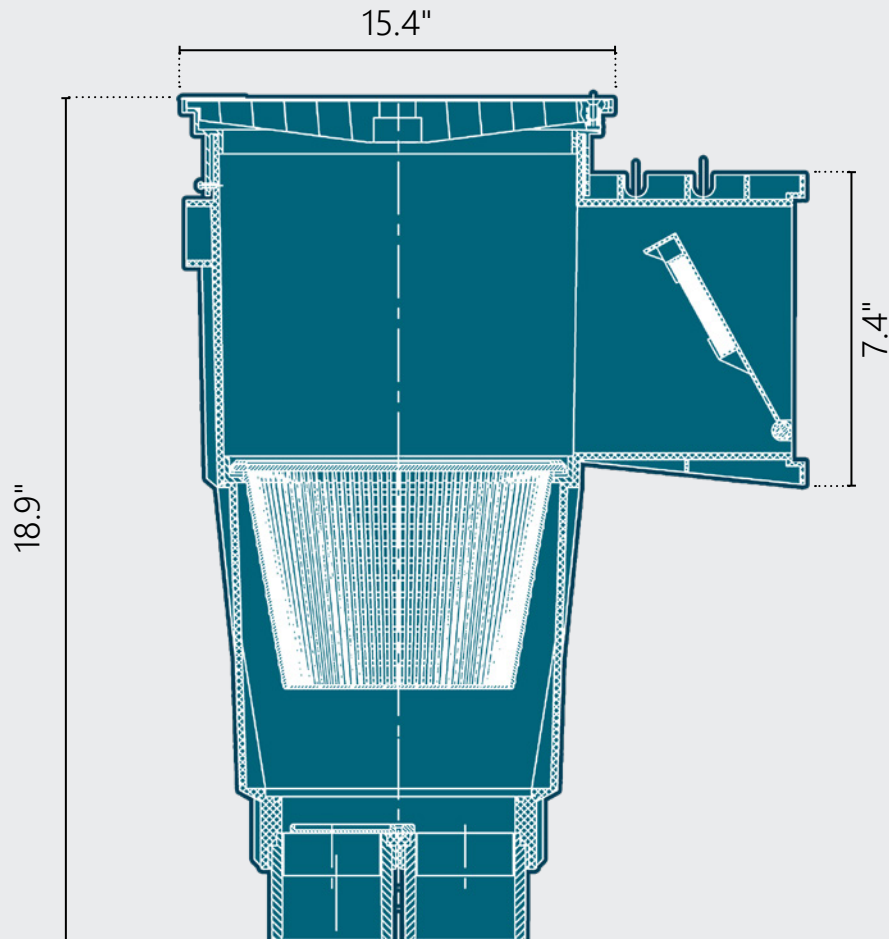
Is water bonding required in all areas?

While local interpretations may vary, the NEC requirements guide national code requirements. Ultimately, water bonding protects swimmers which should always be the highest priority.

ABS UNIBODY SKIMMER ORDERING GUIDE

CMP P/N	BODY STYLE	BODY COLOR	COVER COLOR*	COVER TYPE	GPM	PORTS	PORT TYPE	FLOAT VALVE	BASKET STYLE
25100-040-000	ABS UNIBODY	WHITE	WHITE	ROUND	65 GPM	2	2" FIP	●	FLOWSKIM
25100-140-000	ABS UNIBODY	WHITE	WHITE	ROUND	65 GPM	2	2" SOCKET	●	FLOWSKIM
25100-000-000	ABS UNIBODY	WHITE	WHITE	ROUND	65 GPM	2	2" FIP	●	STANDARD
25100-100-000	ABS UNIBODY	WHITE	WHITE	ROUND	65 GPM	2	2" SOCKET	●	STANDARD
25100-050-000	ABS UNIBODY	WHITE	WHITE	ROUND	65 GPM	2	2" FIP	—	FLOWSKIM
25100-150-000	ABS UNIBODY	WHITE	WHITE	ROUND	65 GPM	2	2" SOCKET	—	FLOWSKIM
25100-010-000	ABS UNIBODY	WHITE	WHITE	ROUND	65 GPM	2	2" FIP	—	STANDARD
25100-110-000	ABS UNIBODY	WHITE	WHITE	ROUND	65 GPM	2	2" SOCKET	—	STANDARD
25100-009-000	ABS UNIBODY	WHITE	TAN	ROUND	65 GPM	2	2" FIP	●	STANDARD
25100-109-000	ABS UNIBODY	WHITE	TAN	ROUND	65 GPM	2	2" SOCKET	●	STANDARD
25100-159-000	ABS UNIBODY	WHITE	TAN	ROUND	65 GPM	2	2" FIP	—	FLOWSKIM
25100-019-000	ABS UNIBODY	WHITE	TAN	ROUND	65 GPM	2	2" FIP	—	STANDARD
25100-119-000	ABS UNIBODY	WHITE	TAN	ROUND	65 GPM	2	2" SOCKET	—	STANDARD
25100-104-400	ABS UNIBODY	BLACK	BLACK	ROUND	65 GPM	2	2" SOCKET	●	STANDARD
25100-154-400	ABS UNIBODY	BLACK	BLACK	ROUND	65 GPM	2	2" SOCKET	—	FLOWSKIM
25100-114-400	ABS UNIBODY	BLACK	BLACK	ROUND	65 GPM	2	2" SOCKET	—	STANDARD
25100-119-400	ABS UNIBODY	BLACK	TAN	ROUND	65 GPM	2	2" SOCKET	—	STANDARD

*cover includes lid and collar



ABS BODY/PVC PORT SKIMMER ORDERING GUIDE

CMP P/N	BODY STYLE	BODY COLOR	COVER COLOR*	COVER TYPE	GPM	PORTS	PORT TYPE	WATER BOND	ZINC ANODE	FLOAT VALVE	BASKET STYLE
25140-050-000	ABS BODY, PVC PORT	WHITE	WHITE	ROUND	75 GPM	2	2"S×2.5"SP	—	—	—	FLOWSKIM
25140-000-000	ABS BODY, PVC PORT	WHITE	WHITE	ROUND	75 GPM	2	2"S×2.5"SP	—	—	●	STANDARD
25140-250-000	ABS BODY, PVC PORT	WHITE	WHITE	ROUND	75 GPM	1	2"S×2.5"SP	—	—	—	FLOWSKIM
25140-010-002	ABS BODY, PVC PORT	WHITE	WHITE	SQUARE	75 GPM	2	2"S×2.5"SP	—	—	—	STANDARD
25140-010-000	ABS BODY, PVC PORT	WHITE	WHITE	ROUND	75 GPM	2	2"S×2.5"SP	—	—	—	STANDARD
25140-210-000	ABS BODY, PVC PORT	WHITE	WHITE	ROUND	75 GPM	1	2"S×2.5"SP	—	—	—	STANDARD
25140-009-000	ABS BODY, PVC PORT	WHITE	TAN	ROUND	75 GPM	2	2"S×2.5"SP	—	—	●	STANDARD
25140-259-000	ABS BODY, PVC PORT	WHITE	TAN	ROUND	75 GPM	1	2"S×2.5"SP	—	—	—	FLOWSKIM
25140-019-000	ABS BODY, PVC PORT	WHITE	TAN	ROUND	75 GPM	2	2"S×2.5"SP	—	—	—	STANDARD
25140-019-002	ABS BODY, PVC PORT	WHITE	TAN	SQUARE	75 GPM	2	2"S×2.5"SP	—	—	—	STANDARD
25140-219-000	ABS BODY, PVC PORT	WHITE	TAN	ROUND	75 GPM	1	2"S×2.5"SP	—	—	—	STANDARD
25140-239-000	ABS BODY, PVC PORT	WHITE	TAN	SQUARE	75 GPM	1	2"S×2.5"SP	—	—	—	STANDARD
25140-210-500	ABS BODY, PVC PORT	WHITE	NONE	NONE	75 GPM	1	2"S×2.5"SP	—	—	—	STANDARD
25140-009-900	ABS BODY, PVC PORT	TAN	TAN	ROUND	75 GPM	2	2"S×2.5"SP	—	—	●	STANDARD
25140-019-900	ABS BODY, PVC PORT	TAN	TAN	ROUND	75 GPM	2	2"S×2.5"SP	—	—	—	STANDARD
25140-019-902	ABS BODY, PVC PORT	TAN	TAN	SQUARE	75 GPM	2	2"S×2.5"SP	—	—	—	STANDARD
25140-219-900	ABS BODY, PVC PORT	TAN	TAN	ROUND	75 GPM	1	2"S×2.5"SP	—	—	—	STANDARD
25140-019-500	ABS BODY, PVC PORT	TAN	NONE	NONE	75 GPM	2	2"S×2.5"SP	—	—	—	STANDARD
25140-219-500	ABS BODY, PVC PORT	TAN	NONE	NONE	75 GPM	1	2"S×2.5"SP	—	—	—	STANDARD
25140-017-700	ABS BODY, PVC PORT	DK GRAY	DK GRAY	ROUND	75 GPM	2	2"S×2.5"SP	—	—	—	STANDARD
25140-217-700	ABS BODY, PVC PORT	DK GRAY	DK GRAY	ROUND	75 GPM	1	2"S×2.5"SP	—	—	—	STANDARD
25140-217-500	ABS BODY, PVC PORT	DK GRAY	NONE	NONE	75 GPM	1	2"S×2.5"SP	—	—	—	STANDARD
25140-014-400	ABS BODY, PVC PORT	BLACK	BLACK	ROUND	75 GPM	2	2"S×2.5"SP	—	—	—	STANDARD
25140-214-400	ABS BODY, PVC PORT	BLACK	BLACK	ROUND	75 GPM	1	2"S×2.5"SP	—	—	—	STANDARD
25140-019-400	ABS BODY, PVC PORT	BLACK	TAN	ROUND	75 GPM	2	2"S×2.5"SP	—	—	—	STANDARD
25140-214-500	ABS BODY, PVC PORT	BLACK	NONE	NONE	75 GPM	1	2"S×2.5"SP	—	—	—	STANDARD
25140-001-000	ABS BODY, PVC PORT	GRAY	GRAY	ROUND	75 GPM	2	2"S×2.5"SP	—	—	●	STANDARD
25140-011-100	ABS BODY, PVC PORT	GRAY	GRAY	ROUND	75 GPM	2	2"S×2.5"SP	—	—	—	STANDARD
25140-011-102	ABS BODY, PVC PORT	GRAY	GRAY	SQUARE	75 GPM	2	2"S×2.5"SP	—	—	—	STANDARD
25140-211-100	ABS BODY, PVC PORT	GRAY	GRAY	SQUARE	75 GPM	1	2"S×2.5"SP	—	—	—	STANDARD
25140-009-100	ABS BODY, PVC PORT	GRAY	TAN	ROUND	75 GPM	2	2"S×2.5"SP	—	—	●	STANDARD
25140-019-100	ABS BODY, PVC PORT	GRAY	TAN	ROUND	75 GPM	2	2"S×2.5"SP	—	—	—	STANDARD
25140-019-102	ABS BODY, PVC PORT	GRAY	TAN	SQUARE	75 GPM	2	2"S×2.5"SP	—	—	—	STANDARD
25140-259-100	ABS BODY, PVC PORT	GRAY	TAN	ROUND	75 GPM	1	2"S×2.5"SP	—	—	—	FLOWSKIM
25140-219-100	ABS BODY, PVC PORT	GRAY	TAN	ROUND	75 GPM	1	2"S×2.5"SP	—	—	—	STANDARD
25140-011-500	ABS BODY, PVC PORT	GRAY	NONE	NONE	75 GPM	2	2"S×2.5"SP	—	—	—	STANDARD
25140-211-500	ABS BODY, PVC PORT	GRAY	NONE	NONE	75 GPM	1	2"S×2.5"SP	—	—	—	STANDARD

*cover includes lid and collar

NATURAL WONDERS® DECK COVERS

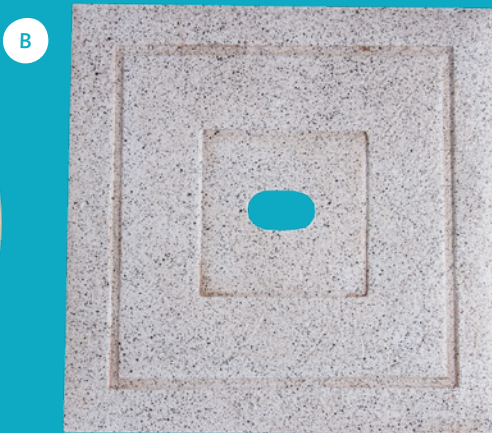
Add a custom design element to any pool deck. Natural Wonders® Fiberglass Deck Covers from CMP are a brand new way to upgrade your pool deck. Exclusive heavy duty designs from CMP in four popular natural finishes.

PRODUCT FEATURES

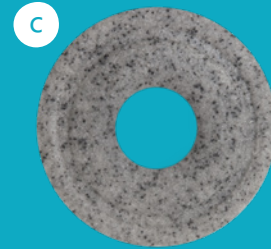
- Enhanced Natural Texture
- Heavy Duty Fiberglass Construction
- Upgrades for Plastic Deck Covers
- Easy Access Finger Grip
- Attractive Retail Packaging
- Perfect for After-market Upgrade
- Matching Lids for Skimmers & Deck Jets
- Complement Popular Pool Deck Finishes



Shown in Sand Stone



Shown in White Stone



Shown in Gray Stone

ORDERING GUIDE

REF	WHITE STONE	SAND STONE	GRAY STONE	BRICK STONE	COVER TYPE
A	25544-200-000	25544-209-000	25544-201-000	25544-207-000	ROUND SKIMMER / CMP AUTOLEVEL COVER
B	25538-200-000	25538-209-000	25538-201-000	25538-207-000	SQUARE SKIMMER COVER
C	25597-330-020	25597-339-020	25597-331-020	25597-337-020	MULTI-NOZZLE DECK JET COVER

DECK COVER FINISH GUIDE

- 0 - White Stone (White/Off White)
- 9 - Sand Stone (Tan)
- 1 - Gray Stone (Light Gray/Granite)
- 7 - Brick Stone (Dark Red/Brick)



NOTE: Natural Wonders® Deck Covers have been artfully crafted to mimic natural materials. Slight variations in color and finish that enhance the natural appearance of these accents should be expected. Like real stone, they may be damaged if dropped from a great height onto a hard surface.

SKIMMER ACCESSORIES

SKIMMER COVERS & COLLARS

A



B



Logo Insert Available

C



Logo Insert Available

D



REF	WHITE	GRAY	BLACK	TAN	DESCRIPTION
A	25538-900-000	25538-901-000	25538-904-000	25538-909-000	SQUARE SKIMMER COVER & COLLAR
—	25538-000-000	25538-001-000	25538-004-000	25538-009-000	10-1/16" SQUARE SKIMMER COVER ONLY
B	25544-900-000	25544-901-000	25544-904-000	25544-919-000	ROUND SKIMMER COVER & COLLAR
—	25544-000-000	25544-001-000	25544-004-000	25544-019-000	ROUND SKIMMER COVER FOR INSERT
C	25538-500-000	25538-501-000	—	—	SQUARE SKIMMER COVER FOR INSERT
—	25544-020-010	25544-021-010	25544-024-010	25544-029-010	TEXTURED BLANK LOGO INSERT
—	25544-030-010	—	—	—	SMOOTH BLANK LOGO INSERT
D	25526-200-000	25526-201-000	25526-204-000	25526-209-000	CMP STACKABLE EXTENSION COLLAR

SKIMMER VAC PLATES

E



F



G



H



I



REF	CMP P/N	DESCRIPTION	HOSE PORT SIZE	COMPARE TO
E	25573-100-000	DELUXE CMP IN GROUND SKIMMER VAC PLATE	1.5" SOCKET	—
F	25573-510-000	STRAIGHT SKIMMER VAC PLATE	1.5" RIBBED BARB	SP11051
—	21093-160-000	1.5" x 1.5" RB HOSE ADAPTER ONLY	1.5" RIBBED BARB	—
G	25573-540-000	STRAIGHT SKIMMER VAC PLATE	1.5" x 1.25" SOCKET	SP11054
H	25573-520-000	90 DEGREE SKIMMER VAC PLATE	1.5" x 1.25" SOCKET	SP11052
—	21093-900-000	90 DEGREE HOSE ADAPTER ONLY	1.5" x 1.25" SOCKET	—
I	25573-410-000	90 DEGREE SKIMMER VAC PLATE, TWIST STYLE	1.5" x 1.25" SOCKET	SP11041

THE PREMIER SUPPLIER OF POOL, SPA & BATH COMPONENTS

Pool, Spa and Bath industry professionals around the world all depend on CMP. If you are a spa designer, pool builder, bath manufacturer or retail store owner, you can depend on CMP products, service and support. Because when the difference is in the details, everything matters®.

CMP everything matters.

www.c-m-p.com

1-800-733-9060

ORDERS: CS@c-m-p.com

PRODUCT INFO: PoolSales@c-m-p.com

36 HERRING ROAD, NEWNAN, GA 30265

10000-300-316 0419ab

©2019 CMP, ALL RIGHTS RESERVED