

Pour.



Made in USA



MASONRY DECK PRODUCTS

4" DRAIN COVER



DC-601 Available
in Frosted, Tan & Gray

DC 401
Available
in Frosted,
Tan & Gray

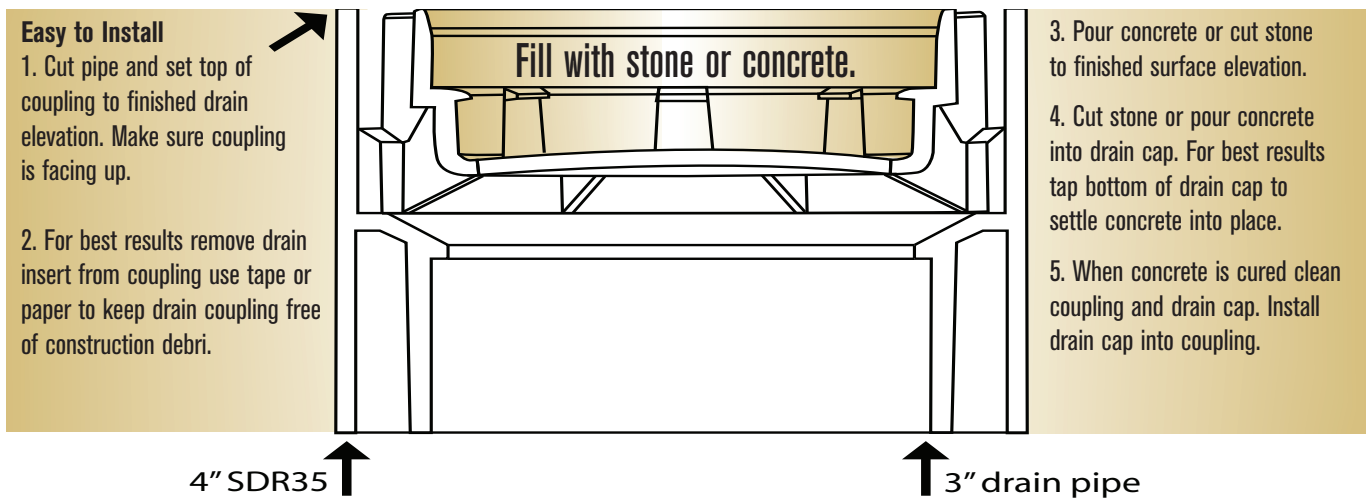
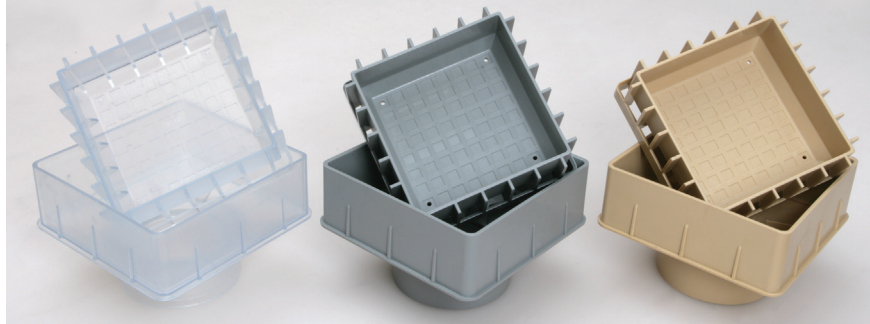
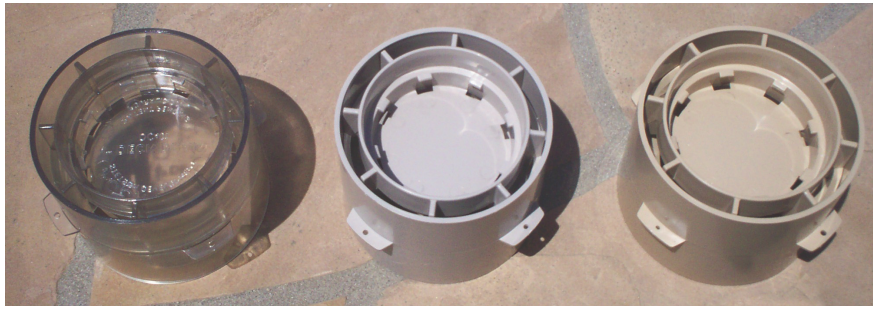
STETSON DEVELOPMENT, INC.

Pour-A-Drain is a product of Stetson Development, Inc.

For further information call Stetson Development Inc. (800) 532-8215

Come visit our website at www.pouralid.com Patent # US 7,862,729 B2





Part Number	Description / Specifications
DC 401 Tan	4" Round Poly Resin Gate with Universal Fit 3" to 4" Collar Fits: 3" or 4" SDR-35 Drain Pipe 3" Open surface area 4.125 SQ.IN. 5.66 G.P.M
DC 401 Gray	
DC 401 Frosted	



Part Number	Description / Specifications
DC 601 SQ Tan	6" Square Poly Resin Gate with Universal Fit 3" to 4" Collar Fits: 3" or 4" SDR-35 Drain Pipe 36.66 G.P.M
DC 601 SQ Gray	
DC 601 SQ Frosted	



Recommended Load Class A Pour-A-Drain is a product of Stetson Development, Inc. Patent # US 7,862,729 B2

- Load at 1-60 PSI
- ADA Compliant
- For Pedestrians, Bicycles and Wheel Chair Traffic
- Loads are based on encasing product in Concrete

For further information:
(800) 532-8215
visit our website at: www.pouralid.com