



SKU# NBP6061

FLOATING SKIMMER

FOR 12-FT COBALT AND CAPRI POOLS



Questions, problems, missing parts?

Before returning to your retailer, call our Consumer Hotline at 1-800-759-0977, Monday – Friday. 8am – 5pm (CST)

TABLE OF CONTENTS

THANK YOU!	3
SAFETY INFORMATION	3
FLOATING SKIMMER - PARTS LIST	4
INTAKE TO PUMP AND RETURN WATER HOSE CONNECTION KIT INSTALLATION.....	5
FLOATING SKIMMER ASSEMBLY AND INSTALLATION.....	6
LIMITED 90-DAY WARRANTY	7

THANK YOU!

Thank you for purchasing this product. We work around the clock and around the globe to ensure that our products maintain the highest possible quality. However, in the rare case of issues during assembly or use of this product, please contact our **Consumer Hotline at 800-759-0977** for immediate assistance before contacting your retailer. Please read the warranty information at the back of these assembly instructions for further details.

SAFETY INFORMATION

Please read this entire manual before attempting to assemble, operate, or install the product.

**NEVER DIVE OR JUMP INTO AN ABOVE GROUND POOL!
SERIOUS AND PERMANENT INJURIES MAY RESULT.**

**NEVER LEAVE CHILDREN UNATTENDED IN OR AROUND THE POOL!
UNATTENDED CHILDREN DROWN IN POOLS EVERY YEAR.**



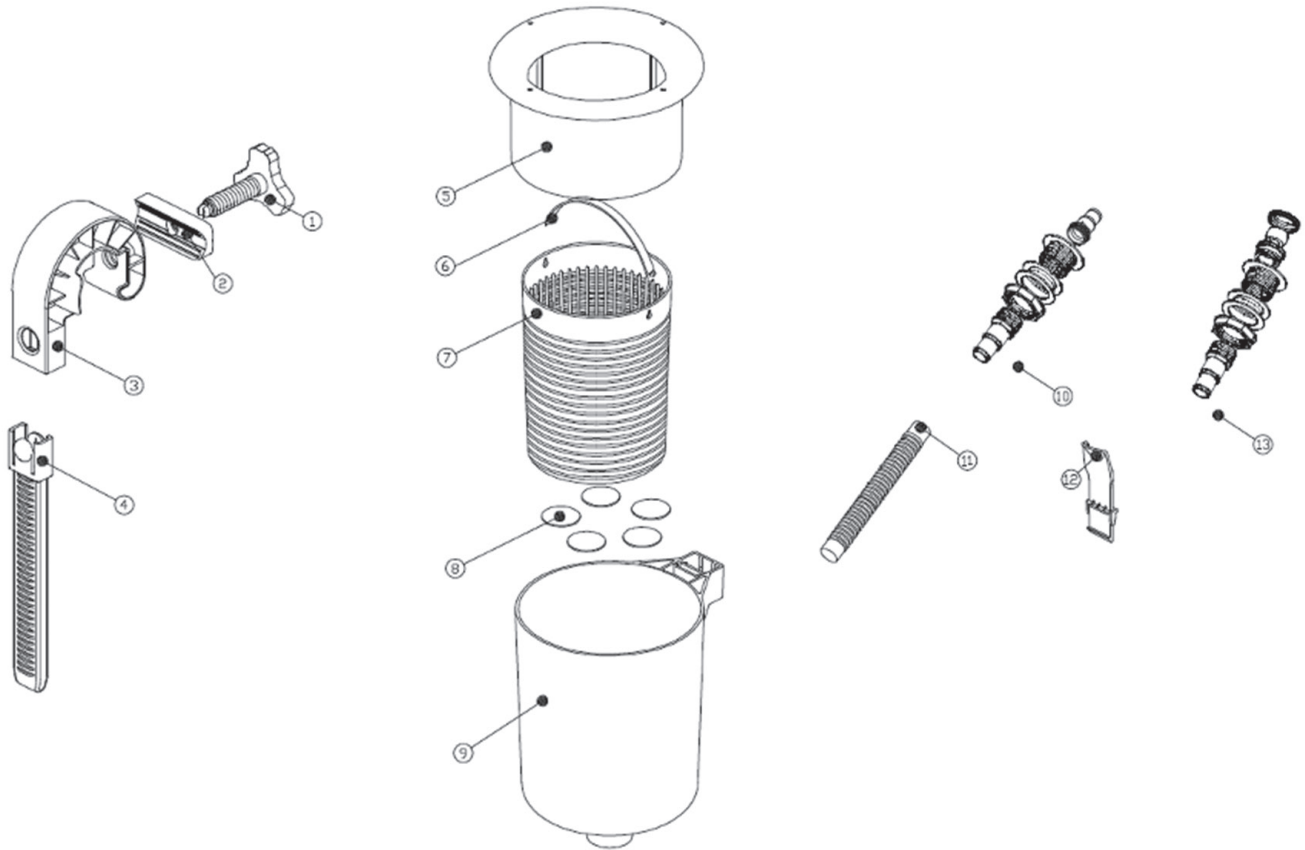
SAVE THIS INSTRUCTION MANUAL

Use of unauthorized replacement parts voids warranty.

ATTENTION INSTALLER: This manual contains important information about the installation, operation, and safe use of this pump and must be furnished to the end user of this product. Failure to read and follow all instructions could result in serious injury.

FLOATING SKIMMER - PARTS LIST (Not to scale)

Check all parts and ensure they are present and undamaged before assembly.
Report missing or damaged parts immediately for a full floating skimmer replacement.
Contact Blue Wave® Customer Service at (800)759-0977.



#	Parts Description	MFG No.	Quantity
1	Fastening Screw	P7A01	1
2	Fastening Block	P7A02	1
3	Over-the-Wall Hook	P7A03	1
4	Water Adjustment Level Bar	P7A04	1
5	Skimmer Body Cover	P7A05	1
6	Basket Handle	P7A06	1
7	Debris Skimmer Basket	P7A07	1
8	Gaskets	P7A08	5
9	Skimmer Body	P7A09	1
10	Intake Connector Kit	P7A010	1
11	Soft Hose	P7A011	1
12	Joint Connector	P7A012	1
13	Return Connector Kit	P7A013	1

INTAKE TO PUMP AND RETURN WATER HOSE CONNECTION KIT INSTALLATION

CAUTION: If your pool does not have pre-cut openings for the skimmer and return water fitting follow the **Metal Wall Pool Manual** for cutting the holes for the intake to pump and water return connections.

1. Install the pool liner per the instructions in the Cobalt and Capri Pool installation manual.
2. Fill the pool with water between 1 to 2- in below the position of the intake to pump connector kit hole. (see diagram 1)

CAUTION: Carefully trim the liner vinyl from the intake hole making sure not to cut beyond the edge of the hole. See the warning statement below.

3. Screw the intake to pump connector kit to the pool wall. Make sure the Teflon tape is wrapped and coats the thread of the intake connector. Screw the remaining parts of the intake connector kit into position. (See diagram 2). This is part #10 in the parts list.
4. Once you have installed the intake to pump connector kit you will need to connect the filter hose on the outside end of the connector kit and to the intake post on your filter system per the instruction in the filter manual. Attach the return water hose to your filter system and complete the assembly of your filter system currently, but **DO NOT PLUG IT IN**. Plug the open end of the return water hose.
5. Continue filling the pool but stop 1 to 2 inches below the return water hole.

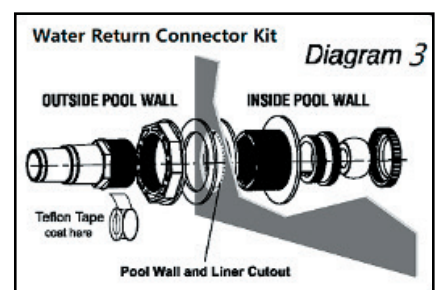
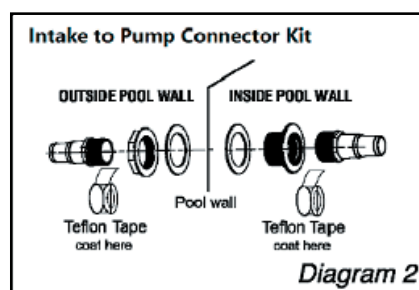
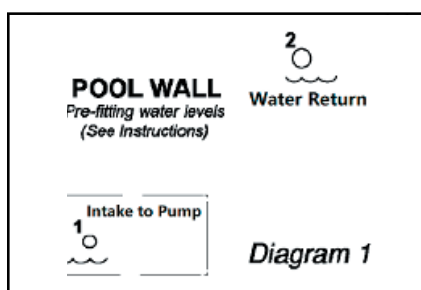
CAUTION: Carefully trim the liner vinyl from the return hole making sure not to cut beyond the edge of the hole.

6. Screw the water return connector kit to the pool wall. Make sure the Teflon tape is wrapped and coats the thread of the return connector. Screw the remaining parts of the return connector kit into position. (See diagram 3) This is part #13 in the parts list and has the return eyeball for the inside of the pool wall.
7. Once you have installed the return water connector kit you will need to connect the return water hose from your pump to the outside end of the connector kit.

CAUTION: You can expect to have some water come out of the hose when you remove the plug. You will want to have the hose clamp already on the hose and make this connection quickly to avoid excess water loss.

8. Finish filling the pool, making sure that the waterline is no more than 3-in from the top of the wall.
9. Follow the instructions below for assembly and connection of your floating skimmer to the inside of the pool.

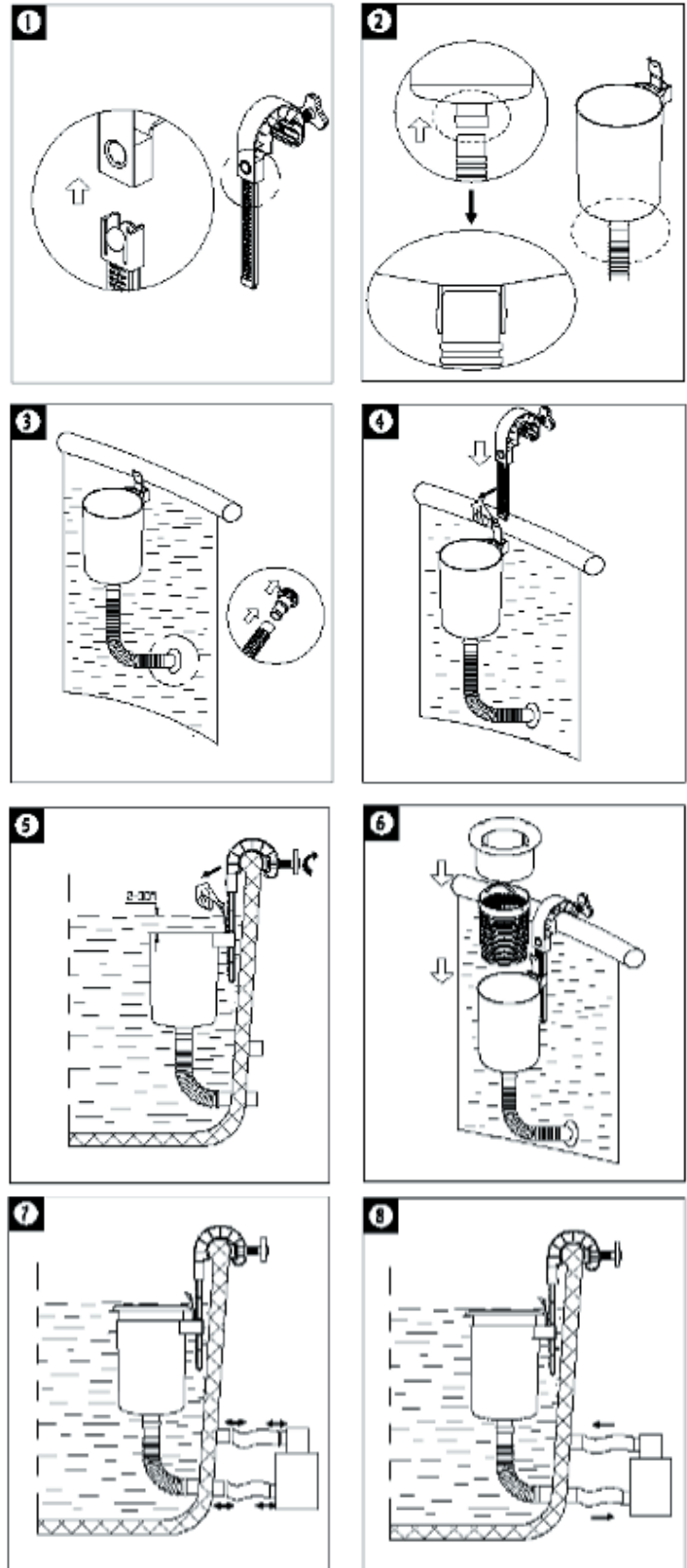
WARNING! Never permanently install the skimmer, intake, and return connector kits before the water is within a few inches of them, the water pressure helps the liner to become properly taut and allows small adjustments to be made before final installation.



FLOATING SKIMMER ASSEMBLY AND INSTALLATION

1. Following the instructions shown in #1 assemble parts 1 through 4 in the parts list above.
2. Following the instructions shown in #2 assemble the skimmer body, parts 9, 11, and 12, and attach the hose to the bottom of the skimmer body.
3. Following the instructions shown in #3, #4 & #5 attach the skimmer body to the hook assembly. Connect the loose end of the hose to the intake to pump connection fitting and hang on the wall.
4. Following the instructions shown in #4, connect the skimmer to the over the wall hook and water adjustment bar. Let the skimmer hang from the hook and bar.
5. When everything is assembled and installed you can adjust the height of the skimmer body on the water level adjustment bar, as shown in #4. The top of the skimmer body should be about an inch below the water level if you want it locked at one height. Or, you can let the skimmer body float up and down as the water level in the pool changes.
6. Following the instructions shown in #6, install the skimmer basket and tank body cover, parts 5, 6, 7, and 8.
7. Connect the filter and pump hoses to the intake to pump connection and the water return connection.
8. Make sure that the top hose is for water return to the pool from the filter/pump and the bottom hose is for water intake to the filter/pump.

WARNING: Never let the water level drop below the top of the skimmer body. If this happens water will stop flowing into the filter and the pump may burn out. A burned-out pump due to no water flow is not covered under the filter warranty.



LIMITED 90-DAY WARRANTY

1. GENERAL TERMS:

- 1.1 In accordance with these provisions, the seller warrants that the product is free of defects and in perfect working condition at the time of delivery to the final purchaser (consumer).
- 1.2 The warranty term for the product is 90 days from the time it is delivered to the final purchaser (consumer).
- 1.3 In the event of any defect in the product notified by the purchaser (consumer) to the seller during the warranty term, the seller will repair or replace the product as they determine best.
- 1.4 Replacing or repairing parts or the complete product under this warranty will not extend the warranty term of the original product but will assume any remaining balance of the original warranty term.
- 1.5 In order for this warranty to be valid, the purchaser (consumer) must provide proof of the date of purchase and the date of the product's installation.

2. INDIVIDUAL TERMS:

- 2.1 This warranty covers the products referred to in this manual.
- 2.2 For this warranty to be effective, the purchaser (consumer) must strictly follow the manufacturer's instructions as included in the documentation provided with the product.

3. LIMITATIONS:

- 3.1 This warranty will only be applicable to sales made to the final purchaser (consumer).
- 3.2 The normal wear resulting from using the product is not covered under this warranty. With respect to expendable or consumable parts, components and/or materials, such as hoses, hose clamps, and the black foam screen, no warranty other than an initial defect warranty applies.
- 3.3 The warranty does not cover those cases where the product; (I) has been handled incorrectly; (II) has been repaired, serviced or handled by non- authorized people, or (III) has been repaired or serviced not using original parts. In cases where the defect of the product is a result of incorrect installation or start-up, this warranty is void.
- 3.4 For questions regarding the warranty or to claim service under the warranty, please contact Blue Wave® Products at (800)759-0977.