

Deck Post Lights

Natural Metal

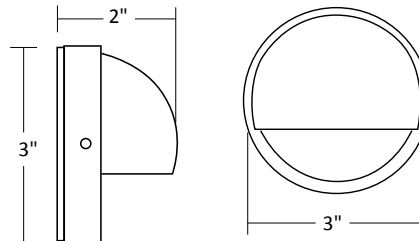


Fixture Ordering Guide

Product Code	Finish
DPL033	AB - Antique Brass

Order Lamp Separately

Example: DPL033-AB-JC10/1WW/LED



Housing:

- Cast brass construction

Cover:

- Antique Brass finish is natural brass with an electrostatic coating that is hard polished and rubbed for an elegant aged brass appearance
- Silicone o-ring provides a low-friction, watertight seal
- Dual set screws for secure and precise mounting

Lens:

- Shock and heat-resistant frosted tempered glass
- Silicone seal around lens prevents water intrusion

Socket:

- Ceramic GU4 bi-pin socket
- Heat-resistant wire leads

Lamp:

- JC-T3 – 10W maximum
- ProLED[®] JC lamps provide up-to 40,000 hour rated life, 10-18V input voltage range and 3000K, amber, blue, green and red color options
- ProLED[®] IP65 Rated JC lamps are rated for use outdoors where exposed directly to water from rain or irrigation

Electrical:

- 12 Volt system
- Pre-wired with 36", 18-2 lead wire
- Two King[®] DryConn[™] waterproof connectors included

Certifications:

- ETL Listed to UL Standard 1838 and CSA C22.2 No. 250.7

Fasteners:

- All fasteners are corrosion-resistant stainless steel

Warranty:

- Backed by a lifetime warranty to be free from defects in material and/or workmanship

Photometrics:

