

# PIPELINE FILTERS® FOR USE UP TO 27,000 GALLONS



Certified to  
NSF/ANSI/CAN 50

Compact Filters Engineered for  
*Safe and Easy Cartridge Access and Maximum Performance*

## FEATURES

- Max commercial 27,000 gallons, 6-hour turn over, calculated per ISPSC
- Max residential 108,000 gallons, 12-hour turn over
- Compact filters engineered for safe and easy cartridge access
- Safe self-aligning removable locking collar/top
- Super strength resin for enhanced structural integrity
- Self-aligning linking base for parallel filtration systems
- Rubber protected stainless steel gauge
- Ergonomic pressure relief valve
- 2" socket x 2½" spigot PVC union connections included
- 1 per case
- 8 per pallet

**NEW** For a maximum for 27,000 gallons

## PIPELINE FILTERS®

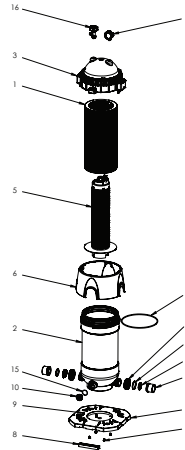
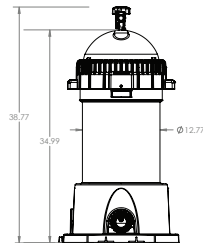
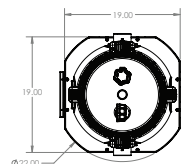
**COMPACT FILTERS ENGINEERED FOR  
MAXIMUM SAFETY AND PERFORMANCE**



Model # PLF27000



**AquaStar's  
Superior Pure  
Pleat Technology  
Cartridge**  
Model # PF27000



1. Cartridge, 27000 Gallon, PipeLine Filter
2. Housing Assembly, 27000 Gallon, PipeLine Filter
3. Lid Assembly, PipeLine Filter
4. Oring, #453, 275 THK. x 11.975 I.D., EPDM 70A
5. Filter Core Assembly, 27000 Gallon
6. Cover, Base, PipeLine Filter
7. Base Plate, PipeLine Filter
8. Plate Link, PipeLine Filter
9. 10 x 3/4" Pan Head Phillips, 316 SS
10. Drain Plug, PipeLine Filter
11. Snap Ring, PipeLine Filter
12. Union Gasket, PipeLine Filter
13. Union Nut, 2" Union
14. Union, 2" Socket x 2.5" Spigot, PVC
15. Oring, #224, EPDM 70A
16. Relief Valve Assembly, PipeLine Filter
17. Pressure Gauge Assembly, PipeLine Filter

U.S. Patent No. 10,792,596, 11,014,027, and  
Other Patents Pending

P 877-768-2717 F 877-276-POOL Outside the US: P +1-949-336-1940 F +1-949-336-1940  
info@aquastarpoolproducts.com www.aquastarpoolproducts.com

# PIPELINE FILTERS® FOR USE UP TO 35,000 GALLONS



Certified to  
NSF/ANSI/CAN 50

Compact Filters Engineered for  
*Safe and Easy Cartridge Access and Maximum Performance*

## FEATURES

- Max commercial 35,000 gallons, 6-hour turn over, calculated per ISPSC
- Max residential 144,000 gallons, 12-hour turn over
- Compact filters engineered for safe and easy cartridge access
- Safe self-aligning removable locking collar/top
- Super strength resin for enhanced structural integrity
- Self-aligning linking base for parallel filtration systems
- Rubber protected stainless steel gauge
- Ergonomic pressure relief valve
- 2" socket x 2½" spigot PVC union connections included
- 1 per case
- 8 per pallet

**NEW** For a maximum for 35,000 gallons

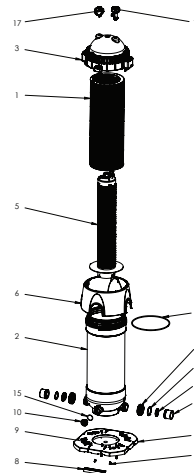
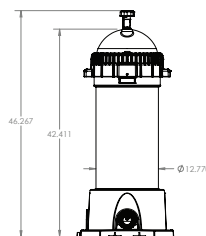
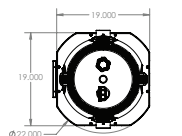
## **PIPELINE FILTERS®** **COMPACT FILTERS ENGINEERED FOR MAXIMUM SAFETY AND PERFORMANCE**



Model # PLF35000



**AquaStar's  
Superior Pure  
Pleat Technology  
Cartridge  
Model # PF35000**



1. Cartridge, 35000 Gallon, PipeLine Filter
2. Housing Assembly, 35000 Gallon, PipeLine Filter
3. Lid Assembly, PipeLine Filter
4. Oring, #453, 275 THK. x 11.975 I.D., EPDM 70A
5. Filter Core Assembly, 35000 Gallon
6. Cover, Base, PipeLine Filter
7. Base Plate, PipeLine Filter
8. Plate Link, PipeLine Filter
9. 10 x 3/4" Pan Head Phillips, 316 SS
10. Drain Plug, PipeLine Filter
11. Snap Ring, PipeLine Filter
12. Union Gasket, PipeLine Filter
13. Union Nut, 2" Union
14. Union, 2" Socket x 2.5" Spigot, PVC
15. Oring, #224, EPDM 70A
16. Relief Valve Assembly, PipeLine Filter
17. Pressure Gauge Assembly, PipeLine Filter

U.S. Patent No. 10,792,596, 11,014,027, and  
Other Patents Pending

P 877-768-2717 F 877-276-POOL Outside the US: P +1-949-336-1940 F +1-949-336-1940  
info@aquastarpoolproducts.com www.aquastarpoolproducts.com

# REPLACEMENT PARTS FOR MODEL # PLF27000

## PIPELINE FILTERS®



ITEM NO.	PART NO.	DESCRIPTION
1	PF2011	PRESSURE GAUGE WITH BOOT, PIPELINE FILTER
2	PF1025	RELIEF VALVE ASSEMBLY, PIPELINE FILTER
3	PF2001	LID ASSEMBLY, PIPELINE FILTER
4	PF27000	CARTRIDGE FILTER MEDIA, 27000 GALLON, PIPELINE FILTER
5	PF1020	CAP CENTER CORE., PIPELINE FILTER
6	PF1016	TUBE CENTER CORE, PIPELINE FILTER
7	PF1019	BASE CENTER CORE, PIPELINE FILTER
8	PF1008	COVER, BASE, PIPELINE FILTER
9	O-RING453	ORING, #453, n.275 THK. X 11.975 I.D., EPDM 70A
10	O-RING224	ORING, #224, 0.139THK X 1.734 I.D., EPDM 70A
11	PF1029	DRAIN PLUG, PIPELINE FILTER
12	PF1013	PLATE LINK, PIPELINE FILTER
13	PF1012	BASE PLATE, PIPELINE FILTER
14	PF2012	BASE PLATE SCREWS AND WASHERS, QTY 4, PIPELINE FILTER
15	UN20GXX	UNION GASKET, PIPELINE FILTER
16	UN25SP20SOXX	UNION, 2" SOCKET X 2.5" SPIGOT, PVC

# REPLACEMENT PARTS FOR MODEL # PLF35000

## PIPELINE FILTERS®



ITEM NO.	PART NO.	DESCRIPTION
1	PF2011	PRESSURE GAUGE WITH BOOT, PIPELINE FILTER
2	PF1025	RELIEF VALVE ASSEMBLY, PIPELINE FILTER
3	PF2001	LID ASSEMBLY, PIPELINE FILTER
4	PF35000	CARTRIDGE FILTER MEDIA, 35000 GALLON, PIPELINE FILTER
5	PF1020	CAP CENTER CORE., PIPELINE FILTER
6	PF1016	TUBE CENTER CORE, PIPELINE FILTER
7	PF1019	BASE CENTER CORE, PIPELINE FILTER
8	PF1008	COVER, BASE, PIPELINE FILTER
9	O-RING453	ORING, #453, n.275 THK. X 11.975 I.D., EPDM 70A
10	O-RING224	ORING, #224, 0.139THK X 1.734 I.D., EPDM 70A
11	PF1029	DRAIN PLUG, PIPELINE FILTER
12	PF1013	PLATE LINK, PIPELINE FILTER
13	PF1012	BASE PLATE, PIPELINE FILTER
14	PF2012	BASE PLATE SCREWS AND WASHERS, QTY 4, PIPELINE FILTER
15	UN20GXX	UNION GASKET, PIPELINE FILTER
16	UN25SP20SOXX	UNION, 2" SOCKET X 2.5" SPIGOT, PVC