

Replacement Parts

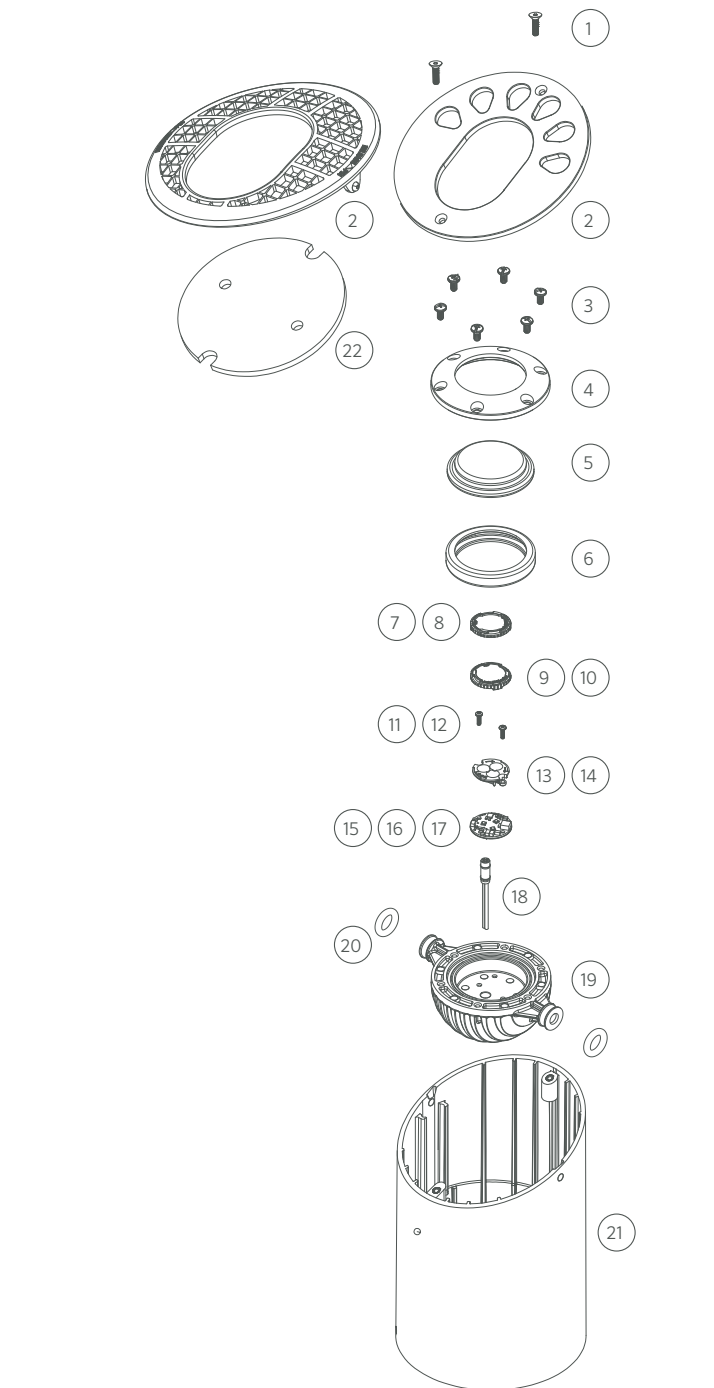
ITEM	DESCRIPTION	CATALOG #
1	Screws, #8-32 x 5/8", Socket, SST	250028940000
1	Screws, #8-32 x 5/8", Socket, Brass	250028950000
1-2	Faceplate Assembly	KGFPXX*
2	Faceplate	†
2	CB Faceplate	760700
3	Screws, #10-24 x 3/8"	250015870000
4	Ring	250014330000
5	Glass Lens	250014240000
5	Frosted Glass Lens	250014240001
6	Seal	250014250000
7-8	Beam Angle Lens	See LED Chart
9-10	Color Filter	See LED Chart
11-12	Screws	See LED Chart
13-14	Reflectors	See LED Chart
15-17	LED Board	See LED Chart
18	Socket	†
19	Housing	†
20	O-Ring	250010280007
21	Tube	250028850000
22	Clear Protective Insert	KG-CPI
3-20	Replacement Module, Ring	PE-Z*-RG-KIT

\* XX = Powder coat color code

† This part is not serviceable. Contact Customer Support or a local distributor to order a new product.

LED Chart

ITEM	DESCRIPTION	CATALOG #
7	3LED Diffuser	771300
7	3LED Flood Lens (30°-32°)	3LEDFLENS
7	3LED Wide Flood Lens (56°-58°)	3LEDWFLENS
8	6LED/9LED Diffuser	771600
8	6LED/9LED Flood Lens (30°-32°)	9LEDFLENS
8	6LED/9LED Wide Flood Lens (56°-58°)	9LEDWFLENS
9	3LED Color Filter, Amber	770800
9	3LED Color Filter, Blue	770801
9	3LED Color Filter, Green	770802
10	6LED/9LED Color Filter, Amber	771500
10	6LED/9LED Color Filter, Blue	771501
10	6LED/9LED Color Filter, Green	771502



11	3LED Screw, #4-40 x 3/8" (Qty Req: 2)	762400
12	6LED/9LED Screw, #4- 40 x 7/16" (Qty Req: 3)	250014550000
13	3LED Reflector	770700
14	6LED/9LED Reflector	771400
14	ZDC LED Reflector	250020690000
15	3LED Board	3LEDULKIT*
16	6LED Board	6LEDULKIT
17	9LED Board	9LEDULKIT
17	ZDC LED Board	ZDCKITL**

‡ ZD = Zoneable and dimmable (add ZD to front of part number)  
 \*\* ZDC kit includes LED board, reflector (#12), screws (#11), and flood lens diffuser (9LEDFLENS)