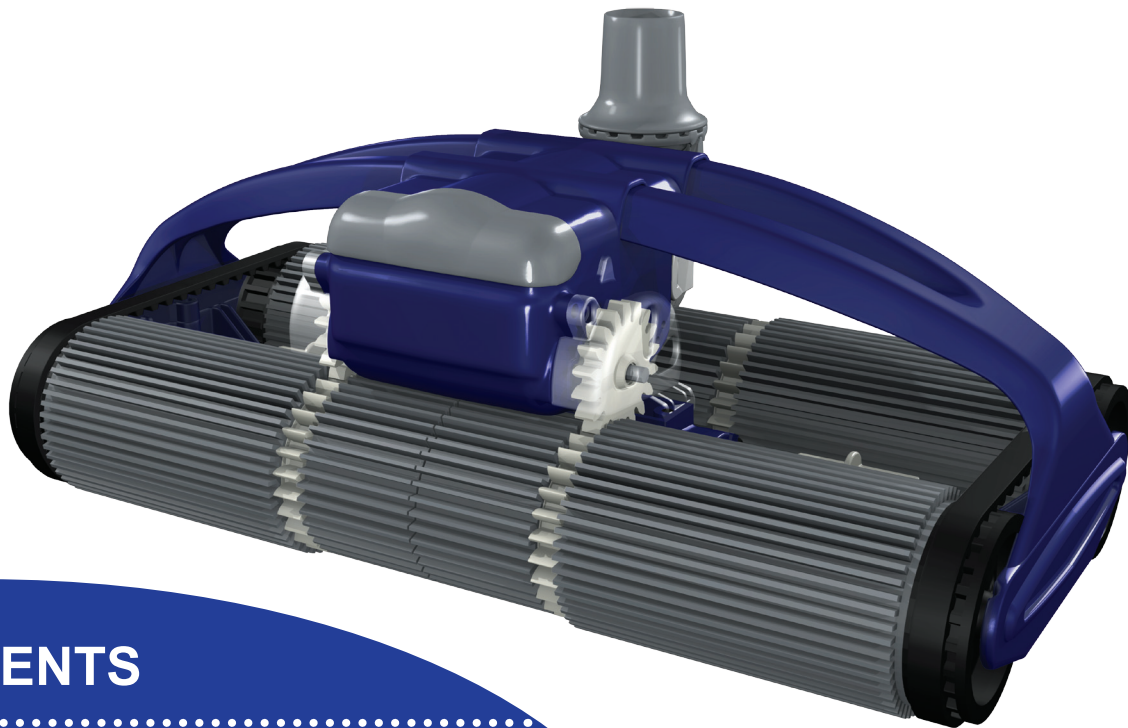


# robo H<sub>2</sub>O<sup>TM</sup>

## HYDRO POWERED ROBOTIC POOL CLEANER

## OPERATING MANUAL



### CONTENTS

Safety and Warnings	2
General Information	3
Prior to Installation	4
Installation	5
Caring for your Cleaner	10
Troubleshooting	16
Warranty	19



## 2 WARNINGS AND SAFETY INFORMATION



### IMPORTANT SAFETY INSTRUCTIONS

**SAVE THESE INSTRUCTIONS.**

Read all instructions before using this pool cleaner.

#### DROWNING AND SUCTION RISKS!

In order to effectively clean your pool, this **ROBO H2O** cleaner operates through the use of suction. You must be aware of serious risks created by the misuse of this suctioning cleaner. If you do not follow the instructions and warnings set out below, serious bodily injury and/or entrapment and drowning may occur:

- **Do not allow swimmers to enter pool when cleaner is in use.** No exceptions!
- **This pool cleaner should be used only by adults** who can properly operate the pool cleaner. Children should never be allowed to use, or play near, the cleaner or hose.
- **Instruct swimmers of the dangers** of contact with suction ports, cleaner head and cleaner hose as disclosed in these instructions.
- **Do not allow anyone to apply the cleaner or its suction hose to hair, clothing, or body parts.** Keep hair, fingers, loose clothing, and all body parts away from the cleaner, its hose and suction parts. The pool cleaner and/or its hose could get ahold of your hair, clothing or body parts and cause serious bodily harm or injury. Suction from the pool cleaner or the hose could also trap a pool user under water.
- **You must cover the suction port in the pool wall** when the port is not being used for the cleaner. Failure to cover the port can lead to entrapment injury and/or drowning.

#### SAFE USE OF YOUR POOL CLEANER



##### STOP PUMP PRIOR TO USING THE POOL IF CLEANER IS INSTALLED

If cleaner is in the pool, you must stop the pump before any swimmers enter the pool. If cleaner is operating in the pool while bathers are present, the cleaner as well as its hose and suction ports could entrap swimmers and cause permanent injury or death.



##### STOP PUMP TO SERVICE CLEANER

Turn off the pool pump and all suction prior to inspecting or performing maintenance on the cleaner. Moving parts inside the cleaner head as well as suction from the pool system can cause harm to fingers or other body parts.



##### STOP PUMP TO MOVE CLEANER

Turn off the pool pump and all suction prior to removing the hose. Move the hose and pool cleaner to an area of the pool that is not in use. If there is potential for the hose to interfere with pool users, remove it from the pool.



##### USE CLEANER ONLY AS DESCRIBED IN THIS MANUAL

Use only with Goby recommended attachments, replacement parts and accessories.

Congratulations on your purchase of **Robo H2O™**, the world's first hydro powered robotic pool cleaner. **Robo H2O** imitates the function of electric robotic cleaners, but it is powered by water and not electricity.

**Robo H2O's** patent pending **Articulating Swivel** helps balance the cleaner. This allows it to operate in different sized pools as well as climb walls and scrub pool floors/walls. **Robo H2O** is the first hydraulic pool cleaner that allows debris to flow freely through the cleaner without going through the drive mechanism. This reduces the load on the pump and filtration system, ensures superior debris pickup and reduces the risk of the engine jamming on debris. Its attributes include:

- Ultra-wide cleaning path cleans pools quickly.
- **Swivel Technology\*** allows cleaner to travel freely in pools of different shapes & sizes.
- Twin-drive roller system navigates main drains, lights, and ladders – also scrubs the tile line in many pools.
- The V pattern cleaning allows maximum coverage while picking up large and small debris such as twigs, leaves, acorns and more.
- Similar to electric cleaners, **Robo H2O's** steering mechanism is programmed and incorporates a full function bi-directional steering feature in forward and reverse cycles.
- Debris does not pass through the engine, reducing the likelihood of gears jamming.
- **Robo H2O's** self-cleaning gears\* effortlessly let **Robo H2O** quickly change direction and provide greater reliability and less wear.
- Works on low flow.
- **Smart Track System** reduces wear on tracks since they only make surface contact as needed (during transitions and around obstacles such as main drains, ladders, etc.).
- **Variable Torque Turbine\*** protects drivetrain from damage and helps **Robo H2O** pick up a variety of debris such as twigs, leaves, acorns and more.
- Easily accessible **Turbine** for fast and easy maintenance.
- Quiet performance, glides quietly through pool.
- Tough exterior built to last.
- Adjustable suction control for optimal performance in various pool types.
- Unique steering is programmed for superior coverage and to overcome obstacles.
- Twin-drive roller system simulates twin motor as each roller has its own drive mechanism which helps cleaner navigate main drains, lights, ladders and more.
- **RoboH2O** works with variable speed pumps. Simply check the RPM of your cleaner (*see page 11*) and adjust accordingly.

*\*Patent pending*

## 4 PRIOR TO INSTALLATION

Carefully read and follow all instructions contained in this operating manual. Failure to do so may cause injury, inhibit the operation of the pool cleaner, or damage your pool. The manufacturer disclaims any liability for repairs or replacements to any structures or components in the customer's pool.

This cleaner was not designed to be the first clean after pool construction or at the beginning of the season. If you have a vinyl pool, check for wear and tear, creases in the vinyl, or any obstructions under the liner. Gunite, plaster, tile and fiberglass pools must be in good condition. Pool must be cleaned of algae and debris prior to the cleaner's first use.

The entire filter system must be cleaned prior to installation. Clean the filter and empty/rinse all baskets as the cleaner will not operate properly with a dirty or clogged filter system. Carefully follow the steps for preparing your pool before installing the cleaner.

### PREPARING YOUR POOL

Before installing your **Robo H2O Pool Cleaner**, you need to prepare your pool as **Robo H2O** will not operate unless the filter system is clean and ready for use. Backwash or manually clean filter prior to installing **Robo H2O**.

### TIPS FOR USAGE

- Your pool needs to be in good condition to use this cleaner. If there are broken tiles, crumbling plaster or vinyl liner tears, the cleaner could damage your pool further or damage itself.
- Cleaner is not designed to clean steps, waterfalls or ladders so they will need manual cleaning with a brush.
- When removed from the pool, make sure the hose is stored straight - if hose coiling occurs, lay hose sections out in sunlight to straighten.
- The cleaner should not run under a pool cover.
- Remove your **Robo H2O** (including hose) before chemical treatment. Wait a minimum of 4 hours after super-chlorination (shock treatment) before re-installing **Robo H2O**. Cleaner does not replace chemical treatment so dose with chemicals as needed.
- Clean the filter, skimmer basket and pump basket regularly and maintain correct pH balance. **Robo H2O** may not climb well and may degrade prematurely if pH balance is incorrect.
- Rinse **Robo H2O** in fresh water when removing from pool for extended periods.
- When out of water, store **Robo H2O** with **Articulating Swivel** at lowest point with back set of rollers resting gently to allow water to drain through the small drain holes (*see image in Figure 7 on page 10*).
- Never leave **Robo H2O** in the sun for extended periods.
- Close all main drains and make sure that only one suction port is active.
- Periodically check your **Robo H2O** for signs of wear. If necessary, replace any worn parts.
- Never maneuver **Robo H2O** manually.
- Never rotate the rollers by hand because the self-cleaning gear train may be damaged if the gears are engaged.
- Adjust pool's return jets downwards to about a 45° angle so that the jets are not pointed towards the surface of the pool. Adjust as needed to ensure the influence of the jets on **Robo H2O** or the hose is minimal.

INSTALLING YOUR ROBO H2O CLEANER

5

Your Robo H2O Automatic Pool Cleaner is fully assembled, making installation quick and simple.

STEP 1: CHECK CONTENTS AFTER PREPARING YOUR POOL

Remove the **Robo H2O** cleaner and all accessories from the box to check the contents. *Refer to Figure 1.*  
**Note:** It is important to hold the cleaner by the handles at all times and not to hold it in any other location.

NO:	Description	Part #	Quantity
1	Robo H2O Pool Cleaner Complete	65001	1
2	Hose Lengths	65226	12
3	Flow Control Valve	65231	1
4	Female/Female Hose (for skimmer installation only)	65227	1
5	Hose Float	65229	1
6	Control Valve Adaptor	61231	1
7	Flow Gauge	65232	1

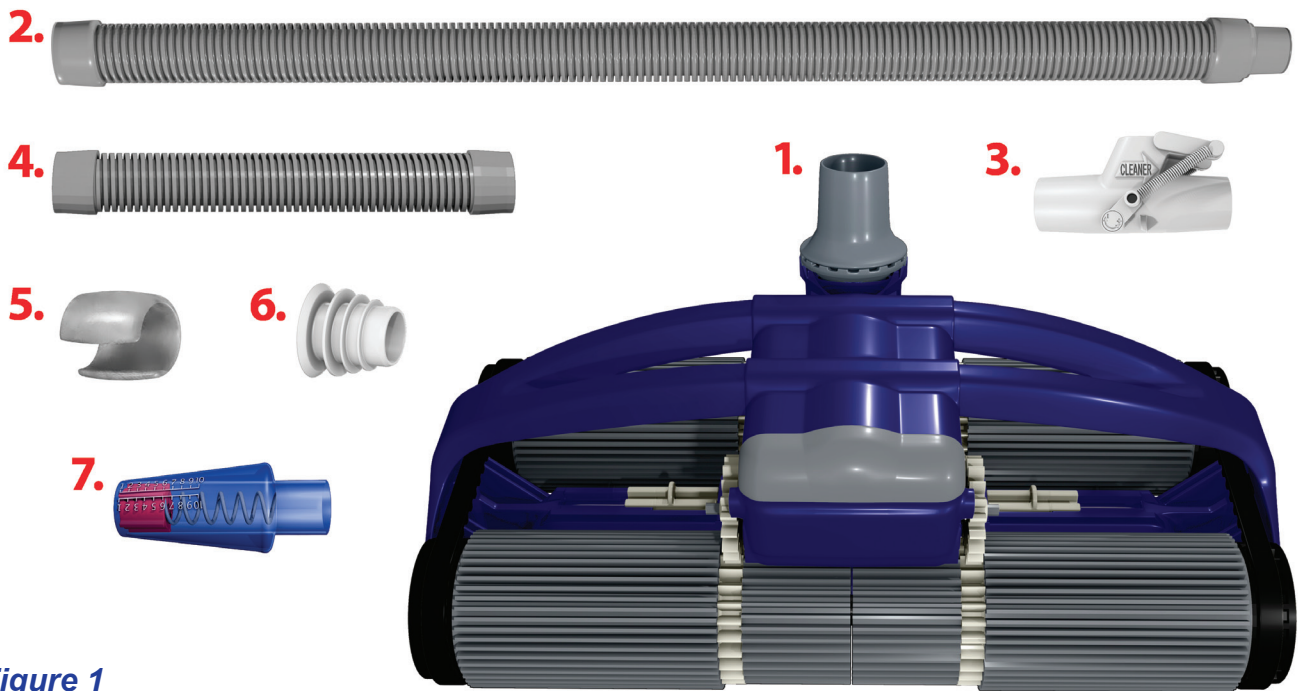


Figure 1



## 6 INSTALLING YOUR ROBO H2O POOL CLEANER

### STEP 2: CONNECT HOSES

#### HOSE CONNECTION WHEN CONNECTING CLEANER TO SKIMMER

1. Connect sufficient lengths of hose by inserting the male hose end into the female end (*see Figure 2*) until you have sufficient lengths of hose to cover the distance from the pool skimmer to the furthest point of your pool.
2. Then add one extra length so that you have enough hose to reach the furthest point of your pool plus one extra hose length. *See Figure 3.* The **Female/Female Hose** should connect directly to the **Flow Control Valve** inside the skimmer.

#### HOSE CONNECTION WHEN CONNECTING CLEANER TO DEDICATED VACUUM LINE

1. Connect sufficient lengths of hose by inserting the male hose end into the female end (*see Figure 2*) until you have sufficient lengths of hose to cover the distance from the vacuum point to the furthest point of your pool.
2. Then add one extra length so that you have enough hose to reach the furthest point of your pool plus one extra hose length. *See Figure 3.*

Figure 2

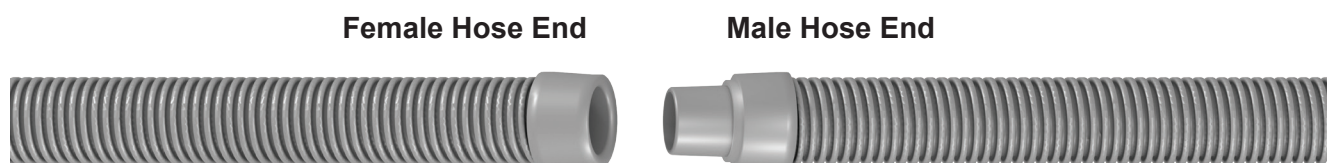
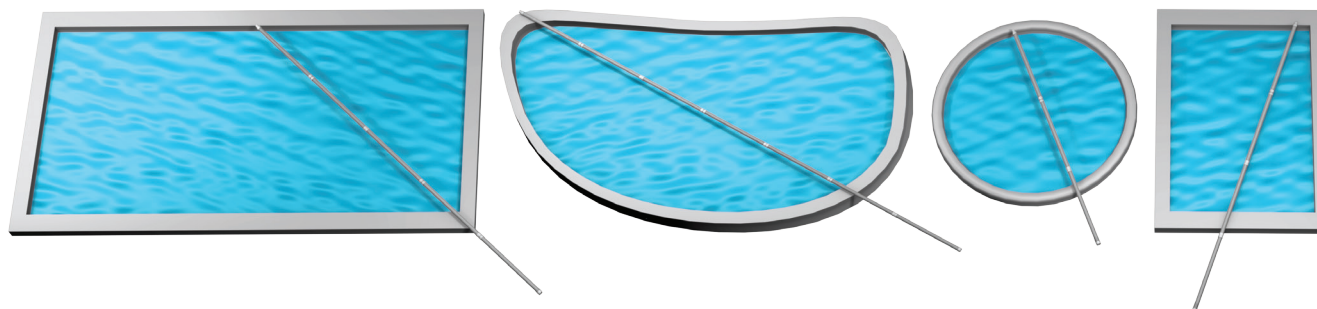


Figure 3



## STEP 3: INSTALLATION

### REMOVE AIR FROM HOSE

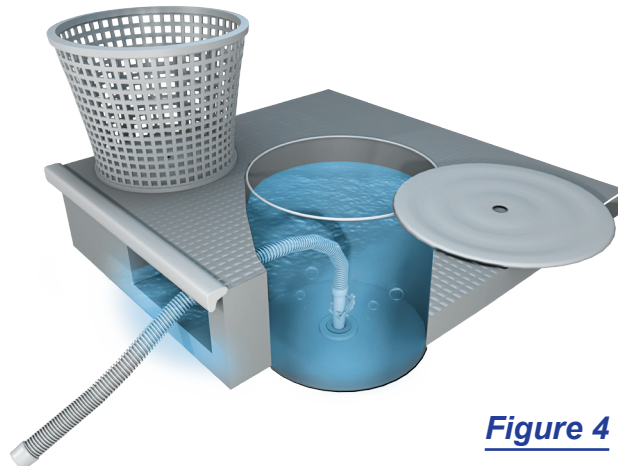
1. Make sure pool pump is turned **OFF**.
2. Attach female end of the hose to the pool cleaner head and remove all air from the cleaner and hose.  
**Tip:** An easy way to do this is to first ensure the hose sections are tightly fitted together and the cleaner is attached to one end of the hose. Then switch the pool pump **ON**. Take the open end of the hose and hold it over the return lines/inlets (where water returns to the pool). Wait a few seconds so air is removed through the pool cleaner. Keep the end of the hose underwater so that air does not get back into the hose. Then switch the pool pump **OFF**.

### WHEN CONNECTING TO THE POOL SKIMMER

When connecting to the pool skimmer, the **Flow Control Valve** is often used. The **Flow Control Valve** ensures your **Robo H2O Pool Cleaner** receives the flow required for optimum performance (see **Figure 5** for how to adjust **Flow Control Valve** if needed). If you have two skimmers, the **Flow Control Valve** may not be necessary.\*\*

**\*\*Note:** For two skimmer application, use the skimmer closest to pool equipment and connect hose using only the **Male Hose** end--do not use **Female/Female Hose** or **Flow Control Valve**.

1. Attach **Flow Control Valve** to the **Female/Female Hose** closest to the skimmer. The **Flow Control Valve** will automatically regulate the flow to your **Robo H2O Cleaner**. If the flow from the pump is too high, the spring-loaded flap will open to bypass the excess, so only the correct amount of flow goes through the cleaner.
2. Remove the skimmer basket.
3. Insert **Control Valve Adaptor** to hole in skimmer to ensure a good connection/snug fit. Then insert the **Flow Control Valve** into the **Control Valve Adaptor** as shown in **Figure 4**. If there are two holes at the bottom of the skimmer, place it into the one at the back (the hole farthest from the opening in the skimmer).
4. Once air has been removed from cleaner and **Flow Control Valve** has been installed, it is important to test the flow using the **Flow Gauge**. Remove cleaner head from female end of hose. Attach the **Flow Gauge** to the end of the hose that will connect to the cleaner head in order to ensure there is proper flow to the cleaner. The **Flow Gauge** should read around 5. If the **Flow Gauge** does not read around 5, see section on how to count RPMs (see **page 11**).



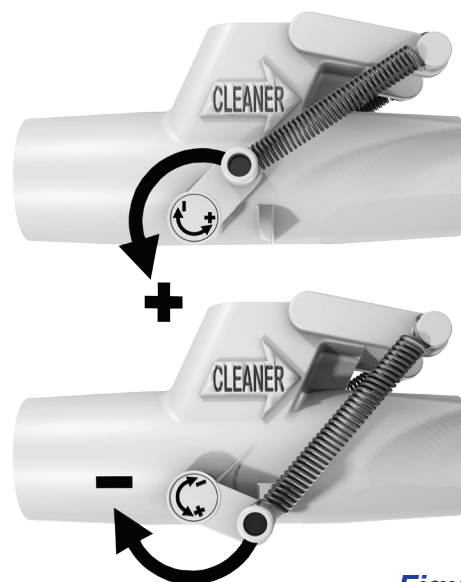
**Figure 4**

**IMPORTANT:** If sufficient flow is not obtained with the factory setting of the **Flow Control Valve** (low), adjust as needed using the handles on the side of the valve. There are + and - marks to indicate the direction to increase or decrease flow. Three settings are possible: low, medium and high. See **Figure 5**.

## 8 INSTALLING YOUR ROBO H2O POOL CLEANER

5. Once flow is in proper range, remove **Flow Gauge** from hose and connect hose to the cleaner's **Articulating Swivel**.
6. Add **Hose Float** and position it as close to the **Articulating Swivel** as possible (see **Figure 6**). Turn the pool pump **ON** and your **Robo H2O Pool Cleaner** will now begin automatically vacuuming your pool.

**Note:** If more or less suction is needed, you will need to adjust the **Sliders** on the pool cleaner itself. Closing the white sliders increases the suction and opening the white sliders decreases suction. See **Figure 12 on page 11** for detailed instructions on this adjustment.



**Figure 5**



**Figure 6**



## WHEN CONNECTING TO A DEDICATED VACUUM LINE IN THE POOL

Some pools are equipped with a dedicated vacuum line, which allows the cleaner to be connected to this line instead of the skimmer. In such cases, the **Flow Control Valve** should **NOT BE USED**.

### To connect to the dedicated vacuum line:

1. Open the spring-loaded flap on the vacuum line wall fitting and insert the male (smaller) open end of the hose. Ensure it is well secured.
2. Once air has been removed from the hose, it is important to test using the **Flow Gauge**. Remove cleaner head from female end of hose. Attach the **Flow Gauge** to the end of the hose that will connect to the cleaner head in order to ensure there is proper flow to the cleaner. The **Flow Gauge** should read around 5. If **Flow Gauge** does not read around 5, see section on counting RPMs on *page 11*.
3. If flow management is required, adjust valves at pool pad as needed as shown in *Figure 19 on page 18*.
4. Once flow is in proper range, remove **Flow Gauge** from hose and connect hose to the **Articulating Swivel**.
5. Add **Hose Float** and position it as close to the **Articulating Swivel** as possible (*see Figure 6*). Turn the pool pump **ON** and your **Robo H2O Pool Cleaner** will now begin automatically vacuuming your pool.

**Note:** If more or less suction is needed, you will need to adjust the **Sliders** on the pool cleaner itself. Closing the white sliders increases the suction and opening the white sliders decreases suction.

*See page 11* in this manual for detailed instructions on **Slider** adjustment.

## OPTIMIZING SPEED AND COVERAGE

Your **Robo H2O Pool Cleaner** should start moving as soon as it is connected and all air has been removed from the hose and cleaner. If it has not started moving after about 30 seconds or is moving very slowly, switch off the pump and adjust the **Flow Control Valve** as shown in *Figure 5* towards the plus side or adjust valves at pool pad.

If the cleaner is not picking up debris, you may need to adjust suction by moving the **Sliders** on the cleaner head. All **Robo H2O Cleaners** are factory pre-set fully closed—it may be necessary for you to adjust your **Sliders** to reach ideal suction. On the wall, ideal movement is obtained when the cleaner moves forward and slides a bit to scrub—it also brushes and spins when it reaches the waterline instead of climbing higher than the waterline. Cleaner will perform best when its movement is steady and consistent (important not to run it too fast). See *Figure 12* on page 11 in this manual for detailed instructions on **Slider** adjustment.

You can also check the RPM of the cleaner if you are unsure it is receiving proper flow – the ideal range of the **Robo H2O Cleaner** is between 8-10 per 15 seconds. To measure RPM, *see point 3 on page 11*.

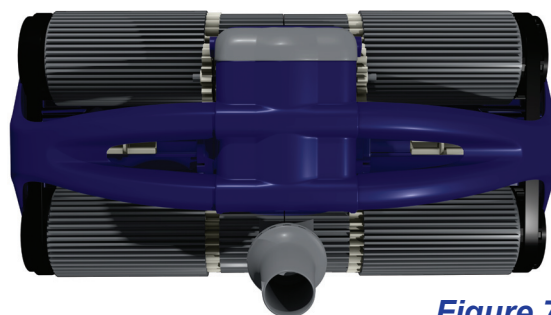
# 10 CARING FOR YOUR ROBO H2O POOL CLEANER

## CARING FOR YOUR ROBO H2O POOL CLEANER

### ROUTINE MAINTENANCE

To maintain the performance of your **Robo H2O Pool Cleaner**:

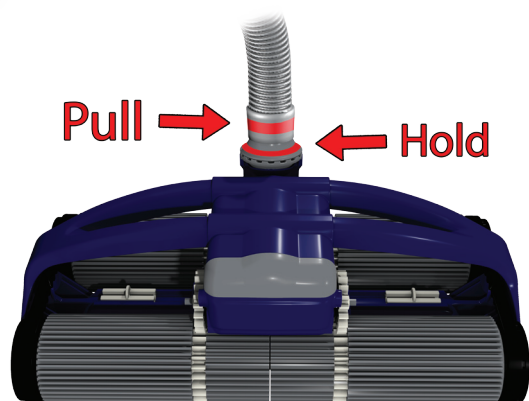
- When removed from the pool, make sure the hose is stored straight. Never coil the hose as this may cause the hose to develop a “memory,” which may adversely affect the performance of your **Robo H2O Pool Cleaner**.
- Remove your **Robo H2O** (including hose) before chemical treatment. Wait a minimum of 4 hours after super-chlorination (shock treatment) before re-installing the **Robo H2O Pool Cleaner**.
- Clean the filter, skimmer basket and pump basket regularly.
- Periodically check your **Robo H2O** for signs of wear. If necessary, replace any worn parts.
- **NOTE:** Due to the harsh conditions in which your cleaner operates, its color may fade or dull over time.
- When out of water, store **Robo H2O** with **Articulating Swivel** at lowest point with back set of rollers resting gently to allow water to drain through the small drain holes (see **Figure 7**).



**Figure 7**

### TO REMOVE THE HOSE FROM THE CLEANER

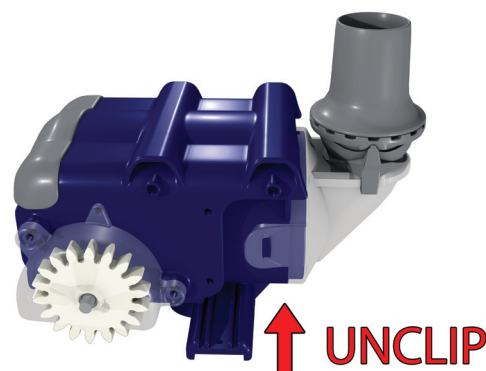
It is important to hold the **Articulating Swivel** steady while gently pulling on the hose cuff to remove it from **Robo H2O** (see **Figure 8**). *Not* holding the **Articulating Swivel** could cause the **Articulating Swivel** to come apart.



**Figure 8**

### IF ROBO H2O STOPS RUNNING

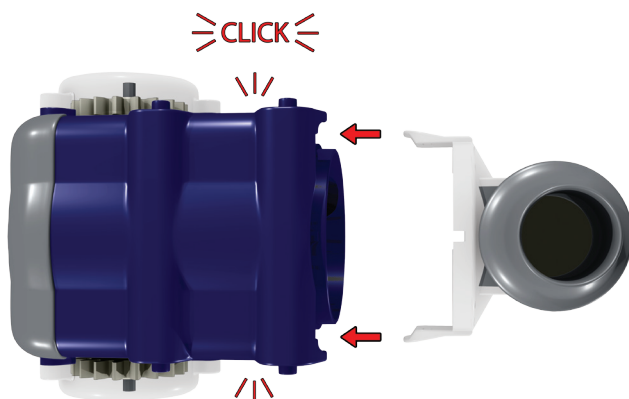
1. Check for debris in the cleaner and endcap.
2. Make sure pool pump is off. Remove **Robo H2O** from the pool and carefully disconnect cleaner from the hose (see note above about removing the hose). Check underneath the cleaner to see if debris is jammed in the opening. If not, move on to remove and check the endcap (see **Figure 9**). This is done by unclipping one side only and pulling the endcap straight out. Check for debris and clear as needed. To return



**Figure 9**

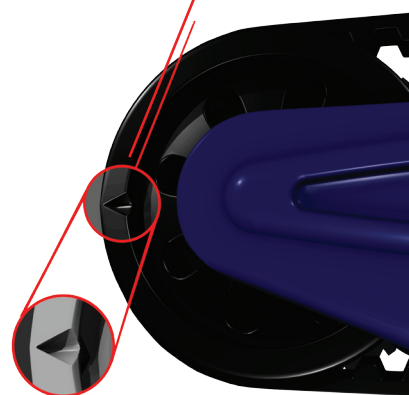
the endcap to its home, simply push it straight back in until you hear a click (*see Figure 10*). Then gently pull and make sure that it is properly sealed and tight.

3. You can also check the RPM of the cleaner if you are unsure it is receiving proper flow. There is a notch in the 4 black pulleys at the end of the rollers that you can use to measure RPMs (rotations per minute). *See Figure 11*. Count the number of turns in 15 seconds using that notch. Ideal RPM range should be 8-10 per 15 seconds. It is important to ensure the rollers are moving forward while counting RPMs (and that unit is not in backup mode).



*Figure 10*

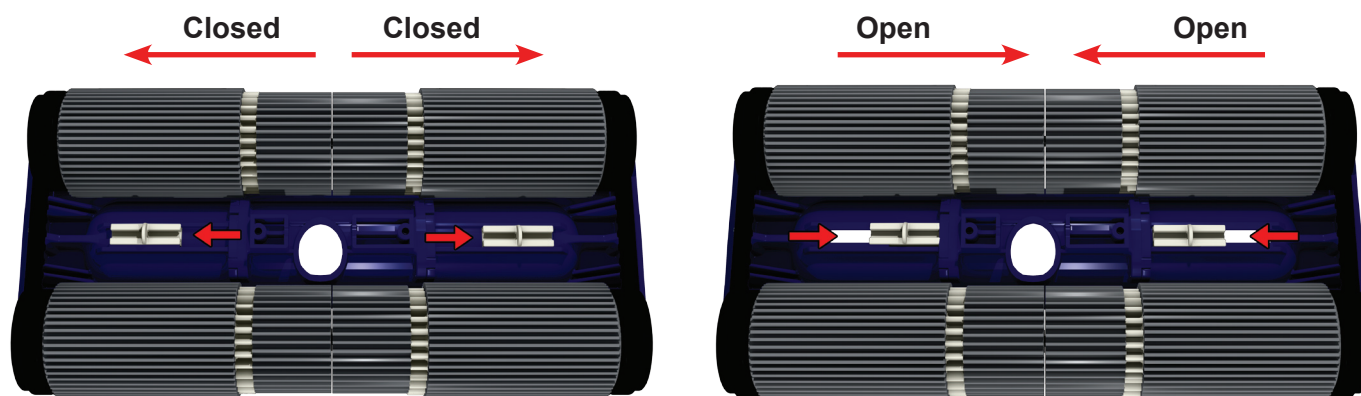
8 - 10 rotations / 15 seconds



*Figure 11*

## IF SUCTION IS NOT SUFFICIENT AFTER ADJUSTING FLOW CONTROL VALVE

Adjusting the **Sliders** on the pool cleaner may be necessary depending upon your particular pool. If adjustment is needed, (with pool pump off) simply push both **Sliders** out away from the center of the cleaner toward the closed position. Closed allows for maximum suction while open reduces suction (*See Figure 12*). All **Robo H2O Cleaners** will come factory pre-set with the **Sliders** fully closed.



*Figure 12*

## 12 CARING FOR YOUR ROBO H2O POOL CLEANER

### REMOVING AND REPLACING TRACKS/ROLLERS

1. Loosen two screws on the sides of the gear box as shown in **Figure 13**.
2. Lift tracks aside to loosen screws underneath them as shown in **Figure 14**.
3. Pull off power module (by the handle) as shown in **Figure 15**.

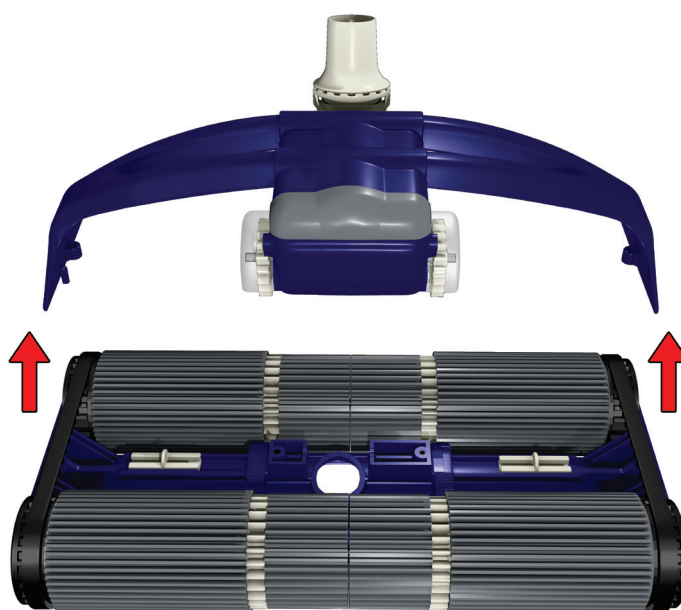
Figure 13



Figure 14

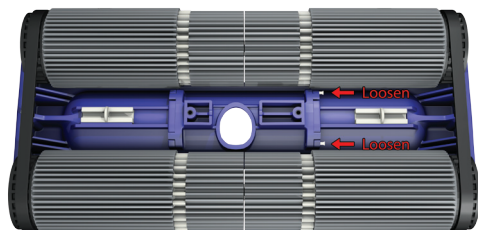


Figure 15

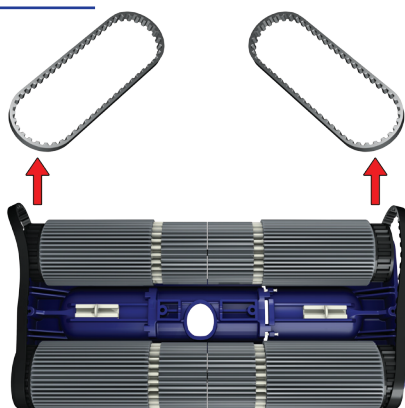




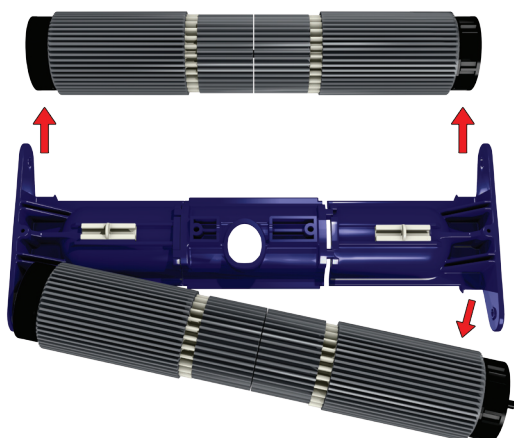
**Figure 16**



**Figure 17**



**Figure 18**

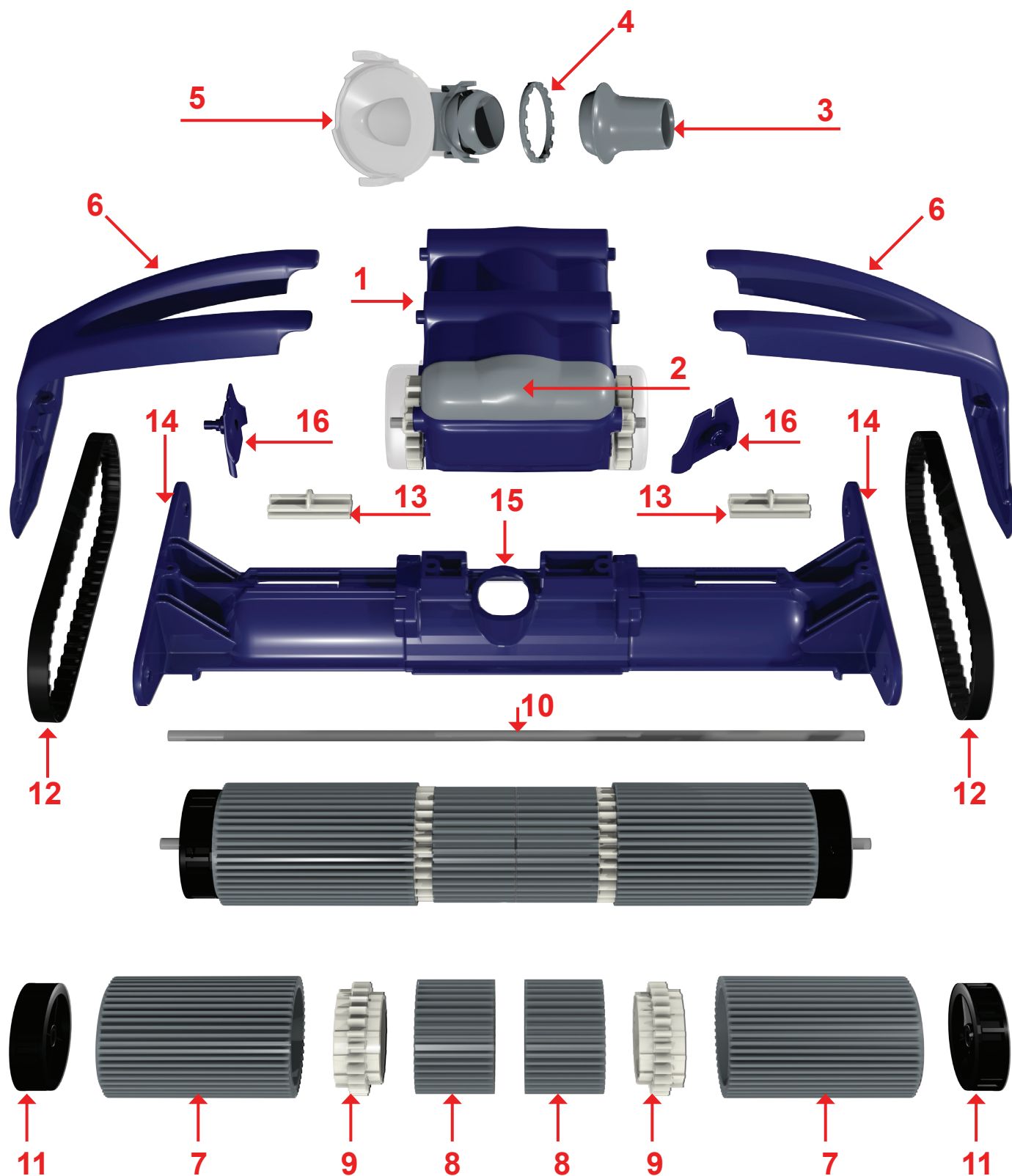


4. Use phillips head screwdriver to go in at an angle and loosen 2 screws (but don't remove). You must keep keep the screws attached on one side, as shown in **Figure 16**.
5. Then remove the tracks and pull away the sides of the unit to remove the rollers as shown in **Figure 17**.
6. Flex the body enough that you can pull off the roller mechanism. Access what needs to be replaced by twisting the rollers off.
7. Small roller, drive gear, large roller and pulley all key into one another. When you put them back together, make sure they go all the way in together by pushing down on a flat surface.
8. Once the rollers have been replaced, put the shaft back into the sides of the cleaner body (one side of each shaft is flat and keyed to fit only one way back together as shown in **Figure 18**) and tap it to ensure it fits together properly.
9. It's important to note that there are two floats inside the small rollers on the front roller mechanism. These **MUST** be returned back to the front of the cleaner in order for it to work properly (the back rollers do not have floats—you can determine which roller has the float by looking inside the body and seeing a foam material).
10. Tighten the two screws with the phillips head screwdriver (do not overtighten and confirm that rollers move freely).
11. Position the tracks back around the pulleys on the side of the cleaner.
12. Replace the arms on the sides of the power module and position the module back in place on the cleaner. Do so by positioning the arms back into the holes on the side of the cleaner body from which they were removed and lift the track slightly as needed for a proper fit. Give it a light tap to confirm it is all back together properly.



## 14 CARING FOR YOUR ROBO H2O POOL CLEANER

PART NAME	PART #	# ON DIAGRAM	QUANTITY INCLUDED
Power Module	65201	1	1
Bumper Plate	65202	2	1
Swivel	65203	3	1
Thrust Washer	65204	4	1
End Cap Assembly	65205	5	1
Handle	65206	6	2
Large Roller Assembly	65207	7	4
Small Roller Assembly	65208	8	4
Front Roller Float	65209	not pictured (inside a roller)	2
Roller Drive Gear	65210	9	4
Roller Shaft	65211	10	2
Wheel Pulley	65212	11	4
Roller Track	65213	12	2
Slider	65214	13	2
Floorpan Side	65215	14	2
Floorpan Center	65216	15	1
Track Guide	65217	16	2



# 16 TROUBLESHOOTING

Due to the individual characteristics of your pool, some adjustment may be required to get the best performance from your Robo H2O Pool Cleaner. The following tips will help you to optimize its performance.

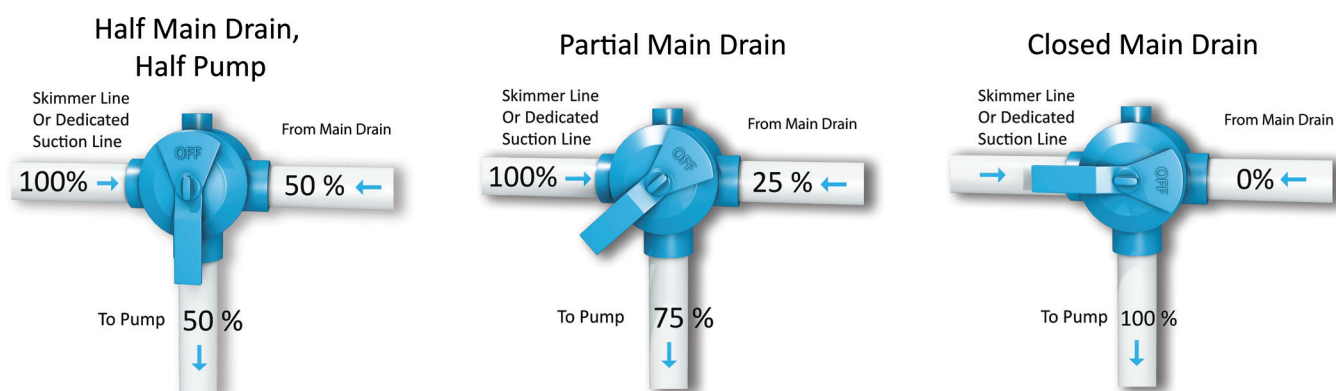
PROBLEM	SOLUTION
Robo H2O does not move, or moves slowly.	<ul style="list-style-type: none"> <li>• Make sure the main drain is closed. Clean pool filter and empty pump strainer basket.</li> <li>• Check the <b>Flow Control Valve</b> and make sure <b>Robo H2O</b> has sufficient flow.</li> <li>• If connected to a dedicated vacuum line, adjust valves at pool pad to obtain optimum flow.</li> <li>• Measure the <b>Wheel RPM</b> and adjust the flow if necessary. <i>See page 11.</i></li> <li>• Check inside the cleaner to see if there is any debris. <i>See page 10.</i></li> <li>• Check suction-if more or less suction is needed, adjust sliders as shown on <i>page 11.</i></li> <li>• Check for leaks in the pool system. Bubbles appearing in the pool can be a sign there are leaks. Contact your pool professional for advice.</li> </ul>
Robo H2O will not climb pool walls.	<ul style="list-style-type: none"> <li>• <b>Robo H2O</b> will climb most vinyl and gunite/cement vertical walls except where pools have rounded walls such as in round or kidney shaped pools.</li> <li>• Test flow using <b>Flow Gauge</b> and adjust as needed. <i>See Step 4 on page 7.</i></li> <li>• Increase suction by closing sliders. <i>See page 11.</i></li> <li>• Make sure <b>Hose Float</b> is in the correct position (on the hose directly next to the <b>Articulating Swivel</b>). <i>See page 8.</i></li> <li>• Check that the <b>Wheel RPM</b> is correct. <i>See page 11.</i></li> </ul>
Robo H2O does not clean the entire pool	<ul style="list-style-type: none"> <li>• Make sure the hose length is correct. <i>See page 6.</i></li> <li>• Make sure the <b>Hose Float</b> is in the correct position. <i>See page 8.</i></li> <li>• Check the return line flow and adjust if necessary.</li> </ul>

PROBLEM	SOLUTION
Air bubbles can be seen in the flow from the return line.	<ul style="list-style-type: none"> <li>• Check the hose to ensure there are no leaks.</li> <li>• Check the connection of the <b>Flow Control Valve</b> to make sure it is under water at all times.</li> <li>• Check that pump basket lid is fitted correctly, is not loose or cracked and that no O-rings are worn or missing. If necessary, contact your pool professional for assistance.</li> </ul>
Robo H2O stays on the main drain.	<ul style="list-style-type: none"> <li>• Make sure the main drain is closed. You may need assistance from a pool professional.</li> <li>• Check to be sure main drain grate is installed.</li> </ul>
Robo H2O climbs above the waterline and sucks air.	<ul style="list-style-type: none"> <li>• Make sure the <b>Hose Float</b> is in the correct position. <i>See page 8.</i></li> <li>• Make sure the <b>Wheel RPM</b> is correct. <i>See page 11.</i></li> <li>• Reduce flow to the cleaner by adjusting the <b>Flow Control Valve</b>. <i>See page 8.</i></li> </ul>
Robo H2O's front or back rollers do not make contact with the pool	<ul style="list-style-type: none"> <li>• Are the sliders open or closed? Closed sliders will create more downforce keeping the cleaner on the ground. <i>See page 11.</i></li> <li>• Check <b>RPM</b>. <i>See page 11.</i></li> <li>• Move <b>Hose Float</b>. <i>See page 8.</i></li> <li>• Check position of return lines/jets (strong jets could push the hose and cause the cleaner to lift).</li> <li>• Make sure the swivel is not jammed. <i>See page 15.</i></li> </ul>
Cleaner does multiple wheelies in the pool.	<ul style="list-style-type: none"> <li>• Ensure pool returns are facing downward and to one direction. <i>See bottom of page 4</i> for more details.</li> <li>• Count RPMs and adjust flow if needed. <i>See page 11.</i></li> </ul>
Robo H2O moves backwards and forwards in a "V" pattern.	<ul style="list-style-type: none"> <li>• Don't worry, that is what it is supposed to do!</li> </ul>

## 18 TROUBLESHOOTING

### TO ADJUST VALVES AT POOL EQUIPMENT PAD

Due to the individual characteristics of your pool, some adjustment may be required to get the best performance. This may be especially necessary with a dedicated vacuum line or variable speed pump. Below are some adjustment options you can try at your pool equipment pad:



**Figure 19**



# robo H<sub>2</sub>O™

## POOL CLEANING SYSTEM

### LIMITED WARRANTY TERMS & CONDITIONS

#### 1-YEAR WARRANTY COVERAGE, EXCLUSIONS APPLY

Before using the cleaner, review the owner's manual completely. Failure to read the owner's manual completely could result in pool damage caused by an improper installation of the cleaner.

This warranty does not cover parts that are worn, scratched, faded as this is natural during normal operation in the pool. The warranty does not cover pools that are improperly maintained including water chemistry, pool surface construction and equipment failures. Pool plaster or vinyl damage is not covered under warranty of the cleaner. Misuse of the cleaner in any form is not covered including accidental misuse, acts of God, or modifications to the cleaner by anyone other than the manufacturer.

[www.gobycleaner.com](http://www.gobycleaner.com)

Customer service is available Monday-Friday from 9am to 5pm EST

Direct Customer Service: (352) 228-4991

Toll Free Customer Service: (800) 753-1233



**POOL CLEANING SYSTEM**