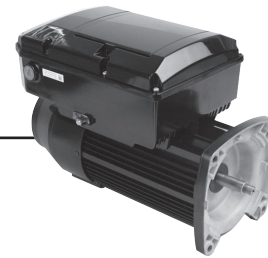


NEPTUNE™ Variable Speed Motor & Control Category "S" & "J"



NEW

FEATURES:

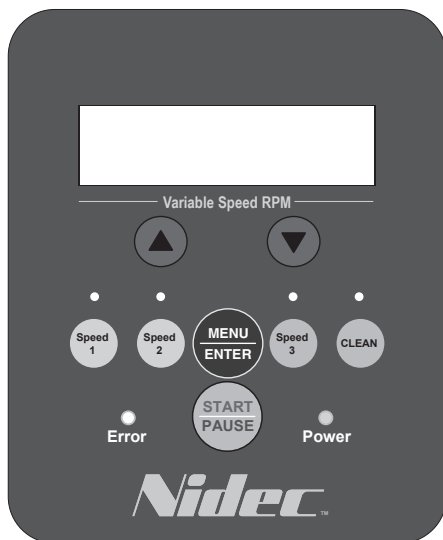
- Fully Integrated Variable Speed Motor & Control
- Brushless Permanent Magnet (BPM) Motor
- Proposed DOE Law & CEC Title 20 Compliant
- Dual Voltage 1.25THP & 1.65THP Models
- TEFC -- IPX5 Enclosure
- Shaft Threads -- (Square Flange) 1/2-20 UNC-2A or (C-Flange) 7/16-20 UNF-2A
- 50°C Ambient
- Triple Bearing Protection
- 1081 Design
- Continuous Duty
- Class B Insulated
- Sealed Ball Bearings
- 80%+ Motor & Control Efficiency @ Full Speed
- 300 Series Stainless Steel Shaft
- Speed Range: 600-3450 RPM
- Low Temperature Monitor
- Finned Aluminum Enclosure
- Fully Functional User Interface
- Modbus & Low Voltage Connection to Pool Control Systems
- Up to Seven Daily Schedules Can Be Programmed
- Adjustable Priming Time & Speed
- Menu Keypad Lockout
- Designed For Quiet Operation
- Simple "Drop In" installation with No Complex Wiring
- Factory Programmed Schedule Settings to Meet the Proposed DOE Law & the CEC Title 20 Rule
- Ability to communicate with pool control systems
- Discount Symbol: DS-FPS**

PREMIUM ENERGY EFFICIENT, VARIABLE SPEED, SQUARE FLANGE, CATEGORY "S"

THP	RPM	Voltage	Freq	SF Amps	System Efficiency	Power Factor Corrected	Catalog Number	Motor Frame	Length Less Shaft	Wgt.	List
1.25	600-3450	115/230	50/60	13.2/7.7	80%	No	NPTQ125*	48Y	13.34	19	\$870
1.65	600-3450	115/230	50/60	13.6/6.8	81%	Yes	NPTQ165*	48Y	10.66	28	\$933
2.25	600-3450	230	50/60	9.5	81%	Yes	NPTQ225*	48Y	10.66	30	\$987
2.7	600-3450	230	50/60	11.1	81%	Yes	NPTQ270*	48Y	10.66	30	\$1,099

PREMIUM ENERGY EFFICIENT, VARIABLE SPEED, 56J MOUNTING, CATEGORY "J"

THP	RPM	Voltage	Freq	SF Amps	System Efficiency	Power Factor Corrected	Catalog Number	Motor Frame	Length Less Shaft	Wgt.	List
1.25	600-3450	115/230	50/60	13.2/7.7	80%	No	NPTT125*	48Y	12.09	19	\$870
1.65	600-3450	115/230	50/60	13.6/6.8	81%	Yes	NPTT165*	48Y	10.01	28	\$933
2.25	600-3450	230	50/60	9.5	81%	Yes	NPTT225*	48Y	10.01	30	\$987
2.7	600-3450	230	50/60	11.1	81%	Yes	NPTT270*	48Y	10.01	31	\$1,099



Simple & Intuitive Neptune™ User Interface

- Up to Seven On/Off Time & Speed schedules available. Preprogrammed with Three energy savings mode schedules.
- One touch speed settings closely tie to the 2021 DOE Rule speed settings: Speed 1 = 1350 RPM, Speed 2 = 1725 RM & Speed 3 = 2760 RPM
- One touch Clean button which runs the motor at 3450 RPM for 30 minutes
- Up and Down arrows allow for navigation through menu options and allow for one touch +/- 10 RPM speed changes for fine tuning flow rates
- LCD screen alternately displays Time of Day and Current Speed then the Current Operation Mode and the time remaining in this Mode

* California Energy Commission (CEC) Appliance Regulations (Title 20) compliant
** Contact dealer for full conditions of operation
Catalog numbers are for competitive comparison purposes only.

extreme-E Extreme-E® represents our most efficient running, highest performing lines of motors.

BRAKEMOTORS
GENERAL PURPOSE SINGLE PHASE
HVAC
WASHDOWN
AGRICULTURE
COMMERCIAL PUMP MOTORS
CLOSE COUPLED PUMP MOTORS
FIRE PUMP MOTORS
POOL & SPA MOTORS
RESIDENTIAL WATER PUMP
ELEVATOR GATE & DOOR