



# RESIDENTIAL BOARD

Fiberglass



ASSEMBLY AND INSTALLATION INSTRUCTIONS

–PLEASE READ CAREFULLY–

## WARNING

POOL WATER ENVELOPE DIMENSIONS MUST MEET OR EXCEED ANSI/APSP/ICC-5 2011 STANDARDS FOR THIS BOARD. USE ONLY WITH A COMPATIBLE S.R. SMITH DIVING BOARD STAND. S.R. SMITH DIVING BOARDS AND RELATED EQUIPMENT ARE FOR IN-GROUND POOLS ONLY. DO NOT USE WITH OTHER POOLS, DOCKS, ETC.

**USE WITH AN IMPROPERLY-SIZED POOL, INCOMPATIBLE STAND, OR IMPROPER INSTALLATION MAY RESULT IN DEATH OR SERIOUS INJURY.**

ATTENTION: THESE INSTRUCTIONS MUST REMAIN WITH PLATFORM OWNER

**\*\*PROFESSIONAL INSTALLATION RECOMMENDED. IMPROPER INSTALLATION VOIDS S.R. SMITH'S LIMITED PRODUCT WARRANTY\*\***

REGISTER YOUR S.R. SMITH PRODUCT AT

[www.srsmith.com/en/customer-service/product-registration](http://www.srsmith.com/en/customer-service/product-registration)



Visit [srsmith.com](http://srsmith.com) for information on the complete line of S.R. Smith pool products.

SRS AUSTRALIA, PTY LTD

12 Enterprise St  
Richlands QLD 4077  
Australia

Phone 07 3812 2283 • Fax 07 3812 1187  
[www.srsmith.com/au](http://www.srsmith.com/au)

S.R. SMITH, LLC  
CORPORATE HEADQUARTERS  
P.O. Box 400 • 1017 S.W. Berg Parkway  
Canby, Oregon 97013  
USA  
Phone (503) 266 2231 • Fax (503) 266 4334  
[www.srsmith.com](http://www.srsmith.com)

**SEE REVERSE SIDE FOR INSTALLATION DIAGRAM AND INSTRUCTIONS.**

## FIBRE-DIVE • FRONTIER III • GLAS-HIDE

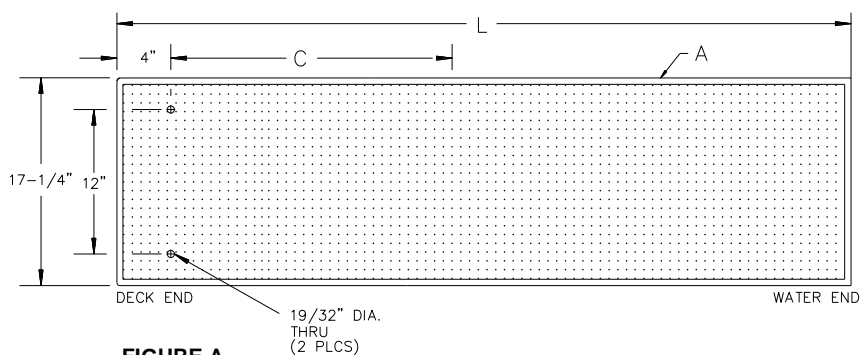


FIGURE A

19/32" DIA.  
THRU  
(2 PLCS)

RESIDENTIAL KIT (67-209-911-SS)\*\*

**NOTICE:**  
S.R. SMITH CANNOT  
GUARANTEE CUSTOMER'S  
CONCRETE STRENGTH OR  
THICKNESS

1. 1/2" X 4-1/2" CARRIAGE BOLT S/S (2 EA.)
2. 1/2" LOCK WASHER S/S (2 EA.)
3. 1/2" HEX NUT SILICONE BRONZE (2 EA.)
4. 1/2" PLASTIC NUT CAP (2 EA.)
5. 1/2" X 2" BLACK RUBBER MOUNTING WASHER (4 EA.)
6. 1/2" x 2" FLAT WASHER S/S (2 EA.)
7. WHITE PLASTIC RECESSED MOUNTING WASHER ASSY' (2 EA.)

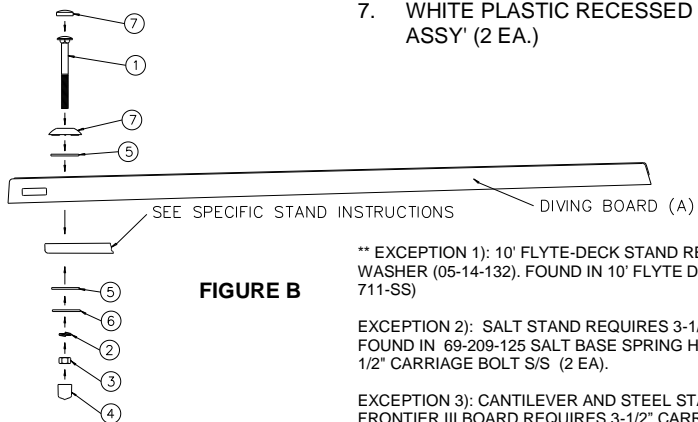


FIGURE B

**IMPORTANT NOTICE:**  
IT IS NECESSARY TO USE AN ANTI-SEIZE  
COMPOUND ON ALL STAINLESS STEEL  
HARDWARE. FAILURE TO USE ANTI-SEIZE  
COMPOUND MAY RESULT IN GALLING  
AND SEIZING OF THE HARDWARE.

\*\* EXCEPTION 1): 10' FLYTE-DECK STAND REQUIRES (2 EA) FLAT WASHER (05-14-132). FOUND IN 10' FLYTE DECK MOUNTING KIT (71-209-711-SS)

EXCEPTION 2): SALT STAND REQUIRES 3-1/2" CARRIAGE BOLTS FOUND IN 69-209-125 SALT BASE SPRING HARDWARE KIT: 1. 1/2" X 3-1/2" CARRIAGE BOLT S/S (2 EA.)

EXCEPTION 3): CANTILEVER AND STEEL STAND USING GLAS-HIDE OR FRONTIER III BOARD REQUIRES 3-1/2" CARRIAGE BOLTS FOUND IN 69-209-029-SS 606/608 SPRING HARDWARE KIT. SEE 656/658 SUPREME FIBERGLASS JUMP STAND MANUAL (06-336) OR 606/608 STEEL CANTILEVER JUMP STAND MANUAL (06-303) FOR DETAILED ASSEMBLY INFORMATION.

**ONLY ONE PERSON ON DIVING PLATFORM AT A TIME  
WITH A MAXIMUM WEIGHT OF 250 LBS (113KG)**

For SI: 1 degree = 0.017 rad, 1 inch = 25.4 mm, 1 foot = 304.8 mm

## INSTALLATION INSTRUCTIONS

CONCRETE DEPTH AROUND JIG MUST BE 6" THICK MINIMUM.

1. Verify that the pool water envelope dimensions meet or exceed ANSI/APSP/ICC-5 2011 standards for this board. Excerpt from the applicable ANSI/APSP/ICC-5 2011 standard are attached and more information on safe installation is available at [www.srsmith.com/](http://www.srsmith.com/). **Warning: using the diving board with an improperly-sized pool may result in death or serious injury.**
2. Verify that the board is compatible with the installed S.R. Smith diving board stand. A matrix of compatible products is attached and available at [www.srsmith.com/](http://www.srsmith.com/).
3. Verify that the diving board stand is properly and securely installed. **The concrete deck around the diving board stand must be 6" thick minimum.**
4. THE DIVING BOARD WARRANTY WILL BE VOID if the correct measurement between the mounting holes and the fulcrum is not maintained when mounting a diving board to a newly installed stand.

TABLE 1 – FULCRUM SETTING CHART

Refer to FIGURE A

Board A	Fulcrum Setting C	Actual Length L
6'	30" ± 3"	70-1/2"
8'	40" ± 4"	94-1/2"
10'	52" ± 5"	118-1/2"
12'	62" ± 6"	142-1/2"

5. The Rubber Fulcrum Pad MUST be used so as not to void S.R. Smith's warranty.
6. Install board using fasteners provided as shown in FIGURE B. Tighten hex nuts until lock washer is fully compressed. **DO NOT OVERTIGHTEN. It is necessary to use an anti-seize compound on all stainless steel hardware. Failure to use anti-seize compound may result in galling and seizing of the hardware.**