

# DESIGNER | IN-GRADE LIGHT | FC LED

## Replacement Parts

ITEM	DESCRIPTION	CATALOG #
1	Screw, #10-24 x 7/16"	250019470000
Faceplate Option:		
2	Ring	FCFPRG-XX*
3	Cowling	FCFPCW-XX*
4	Louver	FCFPLV-XX*
5	Ground Wash	FCFPGW-ZZZ*-XX*
6	Ground Wash Lens	250014240001
7	Black Silicone Seal	250021970000
8	Upper Reflector	771000
9	Hex Baffle, 2" (51 mm)	250015260000
10	Glass Lens, Clear	250014240000
	Glass Lens, Frosted	250014240001
11	Lens Seal	250014250000
12-14	Beam Angle Lenses	See LED Chart
15-17	Color Filter (obsolete)	See LED Chart
18, 19	Screw, #4-40	See LED Chart
20-22	Reflector	See LED Chart
23-26	LED Board	See LED Chart
27	Socket	†
28	Body	†
29	Outer Housing	250014260000

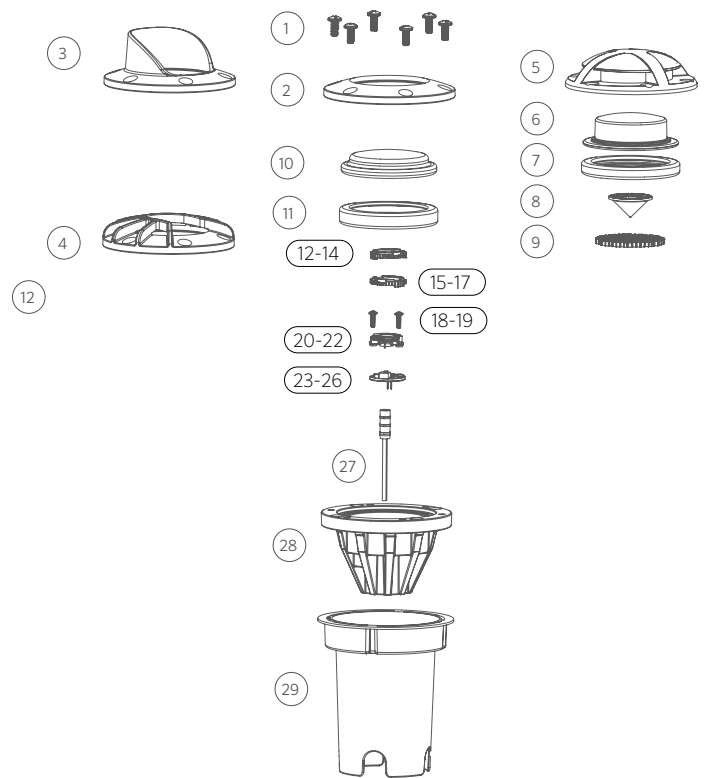
\* XX = Finish code

\* ZZZ = Orientation code (090, 180, 270, 360)

† This part is not serviceable. Contact Customer Support or a local distributor to order a new product.

## LED Chart

ITEM	DESCRIPTION	CATALOG #
12	1 LED Spot Lens (20°)	770600
12	1 LED Flood Lens (35°)	1LEDFLENS
12	1 LED Wide Flood Lens (60°)	1LEDWFLENS
13	3 LED Spot Lens (20°)	771300
13	3 LED Flood Lens (35°)	3LEDFLENS
13	3 LED Wide Flood Lens (60°)	3LEDWFLENS
14	6 LED/9 LED Spot Lens (20°)	771600
15	1 LED Color Filter, Amber	770100
15	1 LED Color Filter, Blue	770101
15	1 LED Color Filter, Green	770102
16	3 LED Color Filter, Amber	770800
16	3 LED Color Filter, Blue	770801
16	3 LED Color Filter, Green	770802
17	6 LED/9 LED Color Filter, Amber	771500
17	6 LED/9 LED Color Filter, Blue	771501



ITEM	DESCRIPTION	CATALOG #
17	6 LED/9 LED Color Filter, Green	771502
18	1 LED/3 LED Screw, #4-40 x 3/8" (Qty: 2)	762400
19	6 LED/9 LED Screw, #4-40 x 7/16" (Qty: 3)	250014550000
20	1 LED Reflector	770000
21	3 LED Reflector	770700
22	6 LED/9 LED Reflector	771400
22	ZDC LED Reflector	250020690000
23	1 LED Board (3900K with filters)	1LEDULKIT†
	1 LED Board (2700K with beam lenses)	KIT1LEDRDW
24	3 LED Board (3900K with filters)	3LEDULKIT*
	3 LED Board (2700K with beam lenses)	KIT3LEDRDW
25	6 LED Board (3900K with filters)	6LEDULKIT†
	6 LED Board (2700K with beam lenses)	KIT6LEDRDW
26	9 LED Board (3900K with filters)	9LEDULKIT†
	9 LED Board (2700K with beam lenses)	KIT9LEDRDW
26	ZD 3 LEDT Amber LED Board	ZD3LEDTKIT
26	ZDC LED Board	ZDCKITL**

† ZD = Zoneable and dimmable (add ZD to front of part number)

\*\* ZDC kit includes LED board, reflector (#17), screws (#20), and flood lens diffuser (9LEDFLENS).