

EN



**PURE  
AIR**

---

**INFLATABLE**  
STANDUP PADDLE BOARD

---

**User's Guide**



## **WARNING**

For your own safety and that of your equipment, make sure to take the following precautions. Failure to follow warning notices and instruction may result in property damage, serious injury or death.

## **GENERAL PADDLING INFORMATION**

This manual has been compiled to help you operate your Inflatable Stand Up Paddle Board (Hereinafter referred to as ISUP) with safety and pleasure. It contains details of the ISUP, the equipment supplied, and information on their operation. Please read it carefully and familiarize yourself with the ISUP before using it.

## **SAFETY**

There is a risk of serious injury or death from drowning. Paddle sports can be very dangerous and physically demanding. The user of this product acknowledges, understands, and assumes the risks involved in paddle sports. Observe the following warning labels and safety standards carefully whenever using this product.

## WARNING LABELS



### MANDATORY INSTRUCTION

- Wear personal flotation device
- Read instructions first
- Fully inflate all air chambers
- Numbers of users
- Max. load capacity
- Safe distance to shore 150 m (492.1')



### PROHIBITION INSTRUCTION

- Do not use in white water
- Do not use in breaking waves
- Do not use in offshore current
- Do not use in offshore wind
- Not for children 14 years old and below



### ATTENTION / DANGER / WARNING

- Design working pressure
- No protection against drowning



### MANDATORY INSTRUCTION

- Swimmers only
- Always supervise children in water

CN-ORP

**Item No.:**

Oriental Recreational Products (Shanghai) Co., Ltd.  
1699 Daye Road, Fengxian Shanghai, China 201402

### PRODUCT SERIAL NUMBER

- Item No.
- Manufacturer information

## ALL AROUND



### MODEL

Pure Air	Pure Air	Pure Air	Pure Air	Pure Air
PA-AR01	PA-AR02 PA-AR03	PA-AR04 PA-AR05	PA-AR06	PA-SK01PS

### SIZE

9'4"	10'2"	10'2"	10'10"	11'0"
30"	30"	30"	32"	32"
4.7"	4.7" / 6"	4.7" / 6"	6"	6"
285 cm	310 cm	310 cm	330 cm	335 cm
76 cm	76 cm	76 cm	81 cm	82 cm
12 cm	12/15 cm	12/15 cm	15 cm	15 cm

### FIN

#### SLIDE-IN CENTER FIN

### VOLUME

205 L	226 L 284 L	226 L 284 L	315 L	310 L
-------	----------------	----------------	-------	-------

### MAX. RIDER WGT

209 lbs 95 kg	231 lbs 105 kg	231 lbs 105 kg	319 lbs 145 kg	319 lbs 145 kg
	286 lbs 130 kg	286 lbs 130 kg		

### MAX. AIR PRESSURE

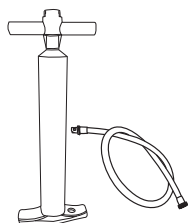
15 PSI

## ACCESSORIES

### Carry Bag



### JOMBO 23.5" High Pressure Pump



### Slide-in Center Fin



### Repair Kit



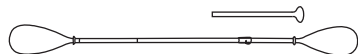
### Cargo Bungee Cords



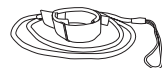
### Removable Seat (Only for PA-SK01PS)



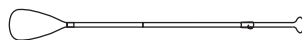
### Paddle (Only for PA-SK01PS)

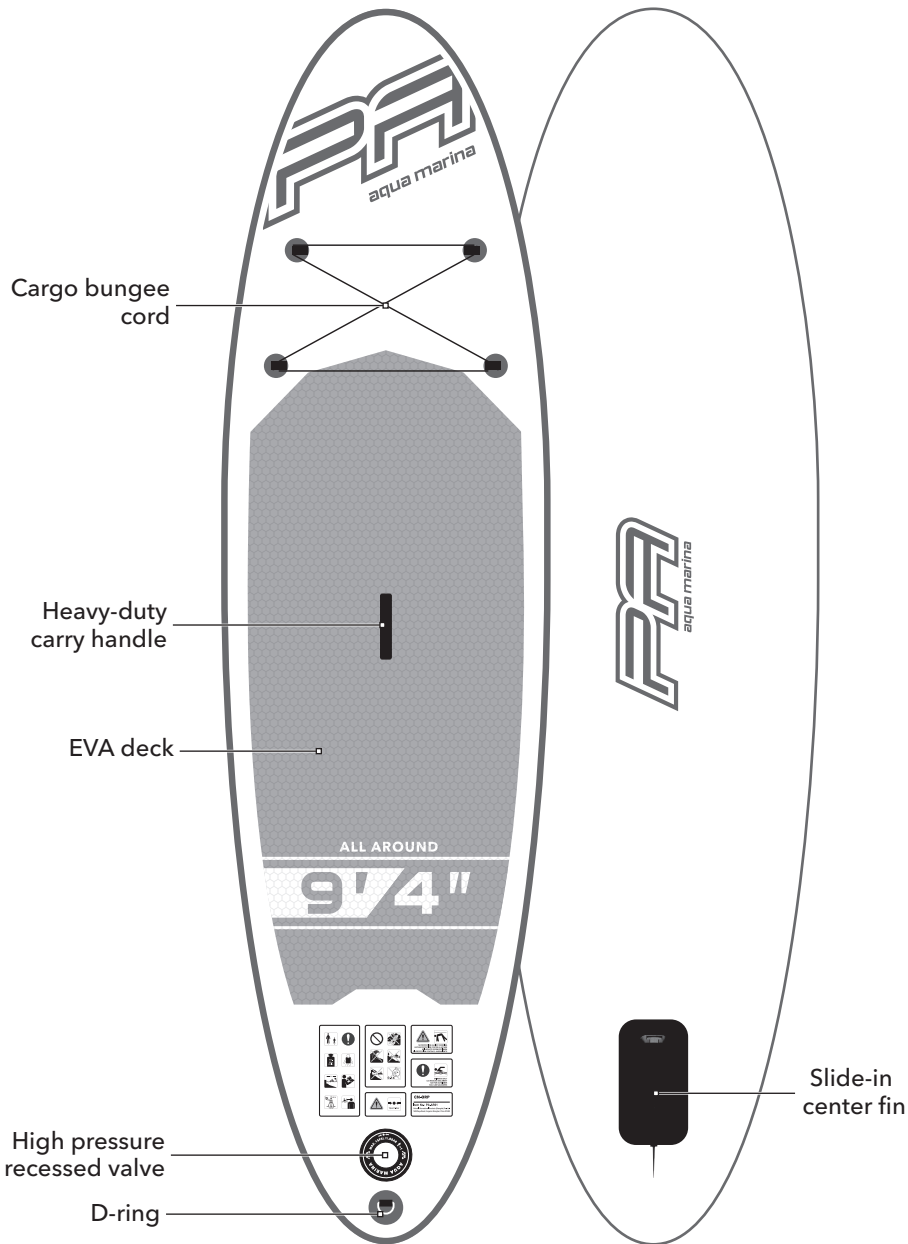


### Leash (\*Optional)

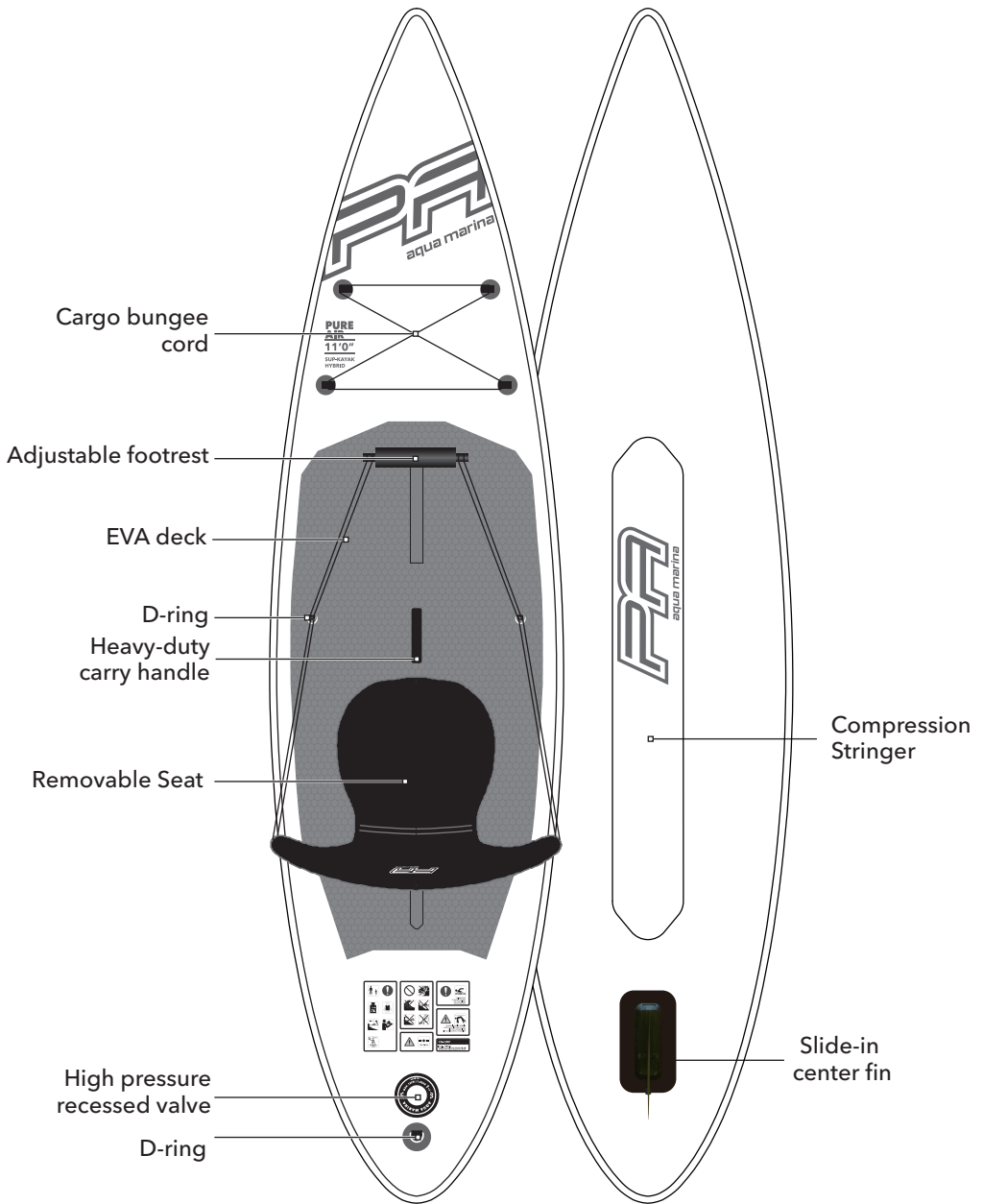


### Paddle (\*Optional)





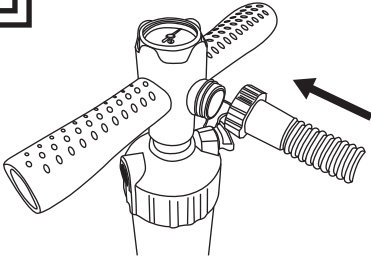
**Actual configuration may vary upon different models.**



**Actual configuration may vary upon different models.**

# INSTRUCTION FOR ASSEMBLING AND DISASSEMBLING

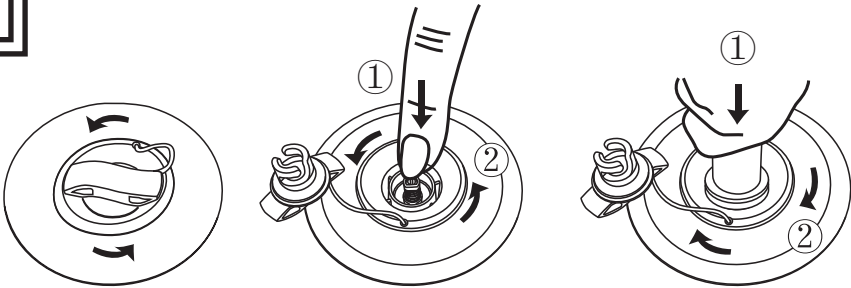
**A**



## Pump Set Up And Inflation

Connect the pump hose to the gauge housing and secure it tightly.

**B**

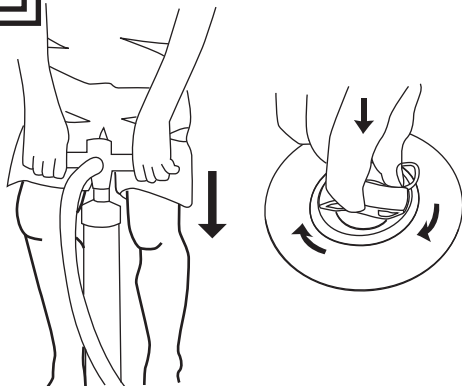


1. Open the valve cap by twisting counter-clockwise. Ensure the valve is clear from debris, sand, or dirt before releasing.
2. Push valve button in and turn counter-clockwise 90 degrees so it pops up and is in the "OUT" position.
3. Insert the pump hose and twist it 45 degree clockwise to lock in place. Inflate until the required pressure is reached.

**Note:** Gauge will not respond until reaching 4psi. Just keep pumping for 2-3 minutes!



**12PSI minimum for proper inflatable boards operation and 15PSI maximum. Over inflation will void your warranty.**

**C**

### 1. Inflate Faster With Less Effort

- Use full range of the pump cylinder while keeping your arms extended.
- Bend your knees and use the body weight.

2. After inflation, return the valve cover and tighten in clockwise direction to lock in place.

## PRECAUTION & TIPS

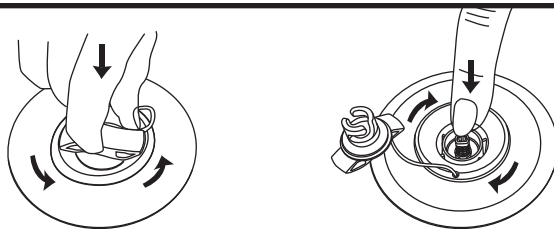
- Electric Pumps can be used to inflate board up to 80-90%. However, the remaining pressure required should be achieved by using the hand pump to avoid over inflation.
- Do not use air compressors as this voids warranty of your board.
- Before long trips, ensure the board has been inflated and has maintained pressure for a minimum of 24 hours.

**D**

### Slide-in Center Fin Installation

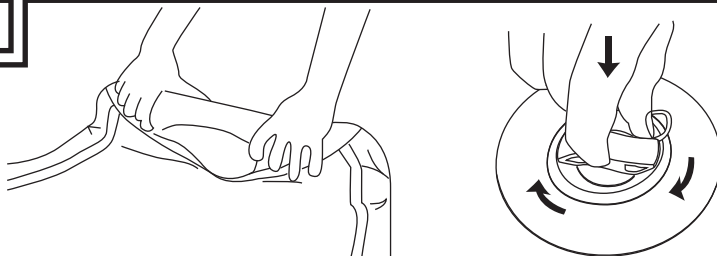
Once the board is inflated, slide in the Center Fin to the fin box and secure the push-in pin.



**E****Deflation**

To deflate your board, follow the instructions below.

1. Release valve cap by twisting counter-clockwise. Ensure the valve is clear from debris sand, or dirt before releasing.
2. Push valve button in and turn clockwise to lock it in DOWN position.

**F**

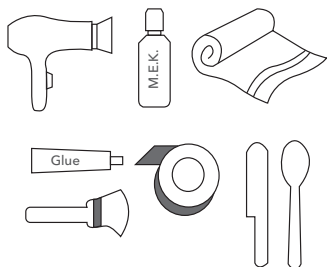
1. Roll up your board from nose to tail, pushing all air out as you roll.
2. Press all air out of the board, return valve cover, and tighten in clockwise direction to lock in place.

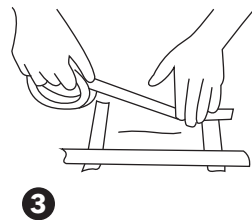
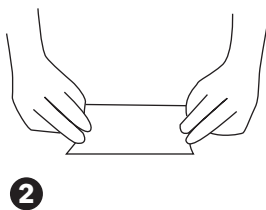
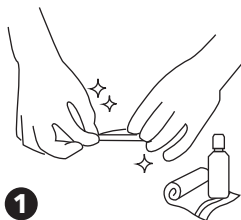
## HOW TO REPAIR A CUT OR PUNCTURE IN YOUR INFLATABLE BOARD

**G****SUPPLIES REQUIRED**

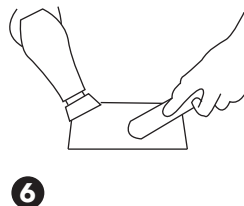
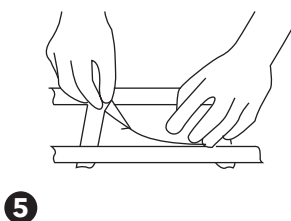
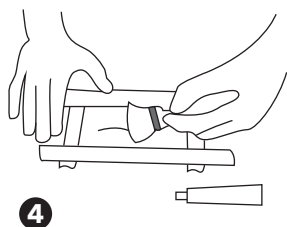
- Glue (AQUASEAL® is recommended)
- Acetone or methyl ethyl ketone (M.E.K.)
- Hairdryer
- Brush
- Tape
- Spatula or spoon
- Towel

**NOTE: Not provided in the SUP board package**

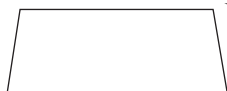




1. Clean the area around the cut or puncture using acetone or M.E.K.
2. Draw the outline of the patch using chalk or pencil (do not use ink). Cut the patch, cover the cut or puncture with approximately 2.5cm (1 inch) overlap on all sides.
3. Apply tape along the outline of the patch. This will prevent the glue from spreading outside the patch area.



4. Apply glue on both the board and patch using a brush or other applicator. Make sure the glue is spread evenly and completely over the board and patch. Let the glue dry for 5 minutes.
5. Apply the patch starting on one side and moving towards the other side, being careful not to trap any air bubbles.
6. Use a hairdryer to gently heat the area to ensure a good bond between the patch and the board.  
Use a metal spatula or spoon and firm pressure to ensure a good bond and to remove any air bubbles.

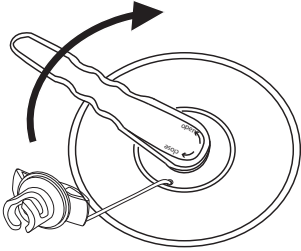


**Allow the glue to cure with the board un-inflated for 24 hours prior to use.**

# HOW TO FIX A LEAKING VALVE

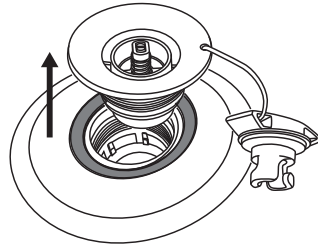
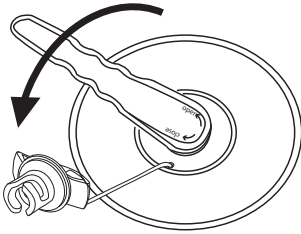
H

## A. Try to tighten the valve

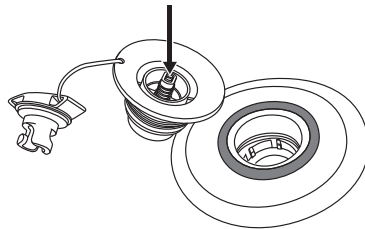
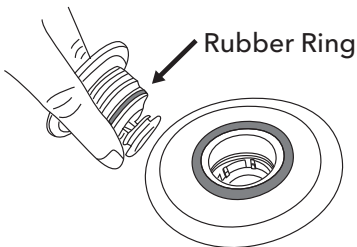


1. Inflate your board up to the max air pressure.
2. Stick your valve wrench down inside of valve and turn clockwise to tighten the valve back down onto the board.

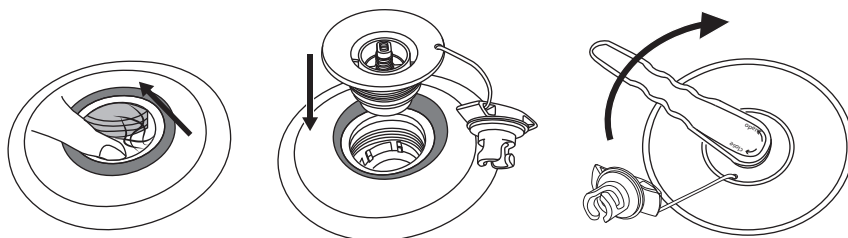
## B. Re-install or replace a valve



1. Completely deflate your board.
2. Undo the dust cap and insert the valve wrench into the valve and twist counterclockwise to remove the valve.



3. Check the rubber ring to make sure that it is in the correct position, tight around the valve and there is no debris in the way.
4. Be sure the pin spring is functioning properly and that there are no cracks along the edges.



5. Ensure there are no strings from the drop stitching material.
6. Note the bottom piece of the valve is not attached to anything.
7. Fit the valve back into your board.
8. Align all the threads and twist to tighten.
9. Once the valve is hand tight, use the valve wrench to seal completely.



**NOTE: Correctly use the wrench by pressing it with one hand on top.**

# PADDLE ASSEMBLY

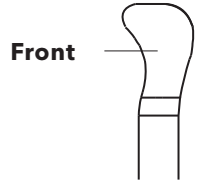
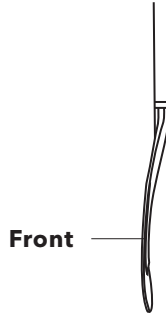
1



Correct

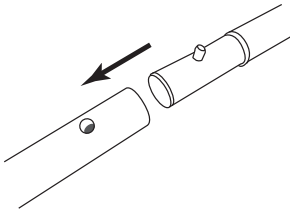


Incorrect

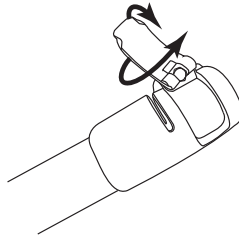


Aqua Marina adjustable shaft uses a secure spring pin system and comes with an additional clamp to reduce any play.

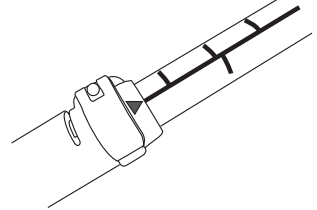
## SECURE SPRING PIN



## CLAMP SYSTEM FOR ALUMINUM SHAFT

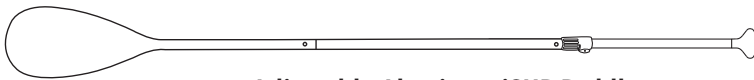


Ensure the center line of the scale is aligned with the indicator on clamp



**NOTE:** Always drain the water left in the paddle shaft after each use.

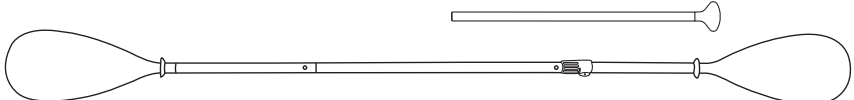
## 3 PCS iSUP PADDLE



Adjustable Aluminum iSUP Paddle

## 2-in-1 iSUP & KAYAK PADDLE

Only for PA-SK01PS



Adjustable Aluminum Kayak Paddle

## FAQs (Frequently Asked Questions)

**Q: How much air should I pump into my board, and how long does it take to inflate?**

A: The recommended pressure is 12 - 15PSI, any higher you risk over inflating and damage. Depending on the size of your board it can take anywhere from 5 to 8 minutes.

**Q: When detaching the pump from the board, the air starts to release from the valve. How do I stop this from happening?**

A: The air is releasing as the valve spring pin has been left in the deflating position. Simply push down and turn the pin until it lifts up into the inflation position and stops air from releasing; continue to inflate the board to the required pressure.

**Q: Can I leave my board inflated in the sun and over night?**

A: If leaving the board inflated, we strongly recommend you to remove it from direct sunlight and deflate the board to at least 10PSI.

**Q: How should I clean and how should I store my board?**

A: We only recommend water and a mild soap. Heavy detergents and solvents can damage your board. It is best to clean and dry your board, take out the fins, roll it up and put in the bag.

**Q: If I puncture my board, can I repair by myself?**

A: Yes, you can use the required tools listed in the manual with the supplied repair kit or email us for more information at [info@aquamarina.com](mailto:info@aquamarina.com).

# WARRANTY

**1**  
**YEAR**

AM warrants this product to be free from major defects in material or workmanship to the original purchaser for a period of one (1) Year from the date of purchase. This warranty is subject to the following limitations

1. The warranty is valid only when this product is used for normal recreational activities and does not cover products used in rental or school operations.
2. AM will make the final warranty determination, which may require inspection and/or photos of the equipment, which clearly show the defect(s). If necessary, this information must be sent to the AM distributor in your country with prepaid postage. Product can be returned only if a return authorization number is given in advance by the AM distributor. The return authorization number must be clearly labelled on the outside of the package, or it will be refused.
3. If a product is deemed to be defective by AM, the warranty covers the repair or replacement of the defective product only. AM will not be responsible for any costs, losses, or damages incurred as a result of loss or misuse of this product.
4. This warranty does not cover damage caused by misuse, abuse, neglect, normal wear and tear including, but not limited to punctures, damage due to excessive heat exposure, damage caused by improper handling and storage, damage caused by use in waves or shore break, board breakage caused by filling or crashing in surf conditions, or damage caused by anything other than defects in material and workmanship.
5. This product must not be modified and/or fitted with a motor except AM BlueDrive power fin.
6. This product must not be used in excess of the manufacturers' recommended maximum load capacity.
7. This warranty is void if any unauthorized repair, change or modification has been made to any part of the equipment.
8. The warranty for any repaired or replacement equipment is available from the date of the original purchase only.
9. The original purchase receipt must accompany all warranty claims. The name of the retailer and date of purchase must be clear and legible.
10. There are no warranties that extend beyond the warranty specified here in.



**WARNING**

**This product is designed in accordance with standards for a specific use. Any modifications or transformations higher than that indicated by the manufacturer could result in serious risks for the user and will void the warranty.**