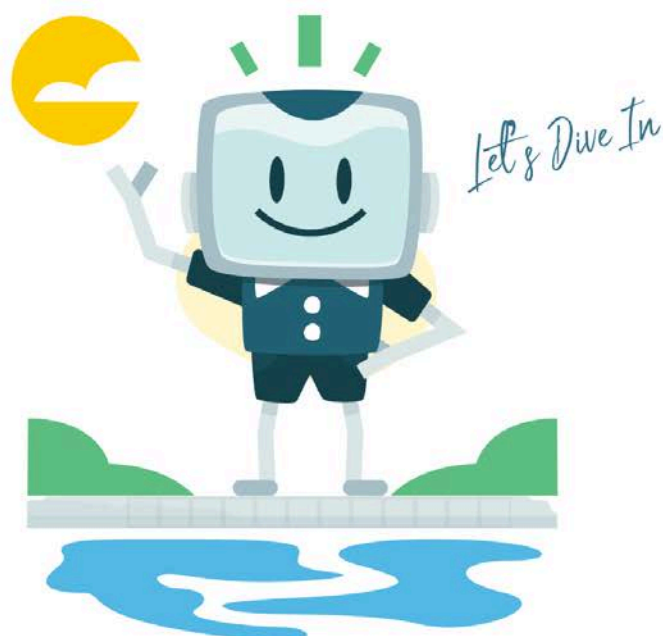


# INSTALLATION GUIDE



## THE ATTENDANT MINI



POOLSIDE *Tech*  
267.810.0600  
support@poolside.tech  
poolside.tech

## IMPORTANT WARNING AND SAFETY INSTRUCTIONS

### READ AND FOLLOW ALL WARNING AND SAFETY INSTRUCTIONS



#### DANGER

**SERIOUS BODILY INJURY OR DEATH CAN RESULT IF THIS PRODUCT IS NOT INSTALLED AND USED CORRECTLY.**



#### NOTICE

**INSTALLERS, MAINTAINERS AND OWNERS MUST READ THESE WARNINGS AND ALL INSTRUCTIONS BEFORE USING THIS PRODUCT. This Guide provides installation instructions for the product.**



#### NOTICE

**This product is intended for use in swimming pool applications only.**



#### WARNING

Most states and local codes regulate the construction, installation, and operation of public pools and spas, and the construction of residential pools and spas. It is important to comply with these codes, many of which directly regulate the installation and use of this product. Consult your local building and health codes for more information.

**This guide provides installation instructions for The Attendant Mini. Consult Poolside Tech for any questions regarding this equipment or its operation.**

**Attention Installer:** This guide contains important information about the installation and safe usage of this product. Give this guide to the owner and/or operator of The Attendant Mini after installation.

**Attention:** This manual contains important information that will help you in maintaining The Attendant. Please save it for future reference.

**Attention:** Read the entire Guide and all associated warning labels before installing this product or attempting to use, service or adjust. Also read the operating instructions and warnings for all equipment in the pool circulating system before operating. Failure to follow safety warnings and instructions can result in severe injury, death, or property damage.



#### WARNING

This product is designed and manufactured for safe and reliable service when installed, operated and maintained according to the information and installation codes referred to in this Guide.



#### DANGER ELECTRICAL SHOCK HAZARD

#### **Risk of Electrical Shock or Electrocution!**

**Always disconnect power at the circuit breaker** before servicing this device or any other equipment that is part of the pool circulation system. Improper installation can create an electrical shock hazard that can result in death or serious injury.



## DANGER

This product must be installed by a licensed or certified electrician or a qualified pool professional in accordance with the current National Electrical Code (NEC), NFPA 70 or the Canadian Electrical Code (CEC), CSA C22.1. All applicable local installation codes and ordinances must also be adhered to. Improper installation will create an electrical hazard which could result in death or serious injury to pool users, installers or others due to electrical shock, and may also cause damage to property.



## WARNING

The electrical supply for this product must include a suitably rated switch or circuit breaker to open all ungrounded supply conductors to comply with the current National Electrical Code (NEC), NFPA 70 or the Canadian Electrical Code (CEC), CSA C22.1. All applicable local installation codes and ordinances must also be adhered to. The disconnecting means must be readily accessible to users but installed no less than five 5ft. (1.52 m), (Canada 3 m (9.75 ft) from the inside wall of the pool.



## NOTICE

Use only **copper** supply conductors rated for 60C/75C to support all loads for the equipment being operated and controlled by The Attendant (refer to NEC tables and the equipment manufacturer).



## WARNING

**A grounding terminal bar is located inside the product.** To reduce the risk of electric shock, this terminal **must** be connected to the grounding means provided in the electric service panel with a continuous copper wire equivalent in size to the circuit conductors supplying this equipment (no smaller than 12 AWG or 3.3 mm).



## DANGER

This product is intended to operate heaters manufactured with built-in high limit circuits **only**. Failure to do so could result in death or serious injury and property damage.



## DANGER

**Do not use this product to control an automatic pool cover.** Swimmers may become entrapped underneath the cover and this could result in death or serious injury.



## DANGER ELECTRICAL SHOCK HAZARD

**Install The Attendant at least 6 feet (2 m) from the inside wall of the pool, spa, or hot tub.** Only connect nonmetallic plumbing to The Attendant.



## WARNING

**To reduce the risk of injury:** Never install The Attendant in a location accessible to the public.

## CUSTOMER SERVICE AND TECHNICAL SUPPORT

+1 (267) 810-0600

[support@poolside.tech](mailto:support@poolside.tech)

<https://poolside.support>

### Poolside Tech

560 Union Square Drive  
New Hope, Pennsylvania 18938

## Table of Contents

<b>Before You Begin</b>	<b>5</b>
Hardware Features	5
Tools/Equipment You Will Need	5
Electrical Ratings	6
Certifications	6
<b>Installation Instructions</b>	<b>7</b>
<b>Installing the Equipment</b>	<b>7</b>
<b>The Attendant Mini Controller</b>	<b>7</b>
Tips for Choosing a Mounting Location	7
Dimensions	8
Wiring Locations and Conduit Sizing	9
Controller Layout and Inputs	9
Connecting The Attendant Mini to the Main Power Supply	11
<b>Equipment Wiring Connections</b>	<b>12</b>
<b>Pool Chemistry Management</b>	<b>13</b>
<b>Installation of the Chemistry Module</b>	<b>14</b>
Connecting the Communication Wires	17
<b>Installation of the Dual Chemistry Module</b>	<b>18</b>
<b>Installation of the pH and ORP Probes</b>	<b>23</b>
Wiring Probes to The Attendant Mini	23
Installing Probes into the Pool Plumbing	25
<b>Applicable Operating Ranges for pH and ORP Probes</b>	<b>25</b>
<b>Parts and SKU List</b>	<b>26</b>
<b>Replacement Parts List</b>	<b>27</b>
Fuse Specifications	27
<b>Initial Software Configuration Instructions</b>	<b>28</b>
<b>Registering The Attendant Mini</b>	<b>28</b>
Use the Poolside Mobile Application	28

Getting Connected to The Attendant Mini	29
Connecting to a Network	31
Managing the WiFi Connection of The Attendant Mini After Initial Setup	33
Additional Safety Instructions	35
<b>Additional Warnings</b>	<b>36</b>
Suction Entrapment Hazard	37
Hazardous Pressure Hazard	38
<b>Appendix A - Connection Table</b>	<b>39</b>

# Before You Begin



**Congratulations** on your purchase of The Attendant Mini powered by Poolside Tech! The Attendant Mini is designed to improve all aspects of the pool ownership experience. Our cloud based automation system is continually monitoring your equipment, water quality and temperature to determine the most energy efficient way to have your poolside oasis ready when you are.

Take a moment to review our Quick Start guide online at our knowledge base @ [poolside.support!](https://poolside.support!)



## Hardware Features

The Attendant Mini offers the following features:

- Two (2) RS485 Serial Communication inputs for variable speed pump control, digitally controlled lights (DMX), salt cells, and heaters.
- Control of up to three (3) automatic 24 VAC valve actuators. These actuators can control pool and spa water flow, water features, cleaners and more.
- Control of up to two (2) high-power devices. This includes single or multi-speed pumps, pool lights, landscape lighting, powered water features and more.
- Control of up to two (2) heater, heat pump, or other low voltage dry contact devices. This includes heaters, electric heat pumps, solar heaters, chillers and more.
- Two (2) temperature sensor inputs, or non-contact water level sensors.
- Two (2) contact switch inputs for use with flow switches, pool covers, float-style level sensors, and the like.
- Optional: Chemistry sensor modules supporting 2 pH and 2 ORP probes.
- Gigabit Ethernet and Wi-Fi connectivity capability on both 2.4 and 5ghz bands.

## Tools/Equipment You Will Need

- Philips screwdrivers #1 and #2
- Slotted screwdriver 2.5mm or 5/64"
- Slotted screwdriver 3.5mm or 9/64"
- Wire cutters
- Wire strippers
- A drill and drill bits. You may need to use a masonry drill bit and a hammer drill to create the holes for mounting.
- The appropriate hardware - screws and anchors - to mount The Attendant Mini enclosure.

## Electrical Ratings

Model / Series	Input Voltage	Input Freq.	Input Amperage Max.	Output(s)	Max Load Rating per Output
The Attendant Mini (ATD-200)	120 / 240 VAC	60 Hz	150A	High Voltage Relays (Relay 1-2)	120/240V, 20 A tungsten; 277 V, 20 A ballast; 120 V, 1.5 HP; 277 V, 3 HP  <i>Chemical Dosing pumps - limited to 5A/240VAC</i>
				Low Voltage Relays (Heater 1-2)	24 V, Max. 1.5 A (combined total load)
				Low Voltage Serial Ports (Bus 1-2)	14 V, Max 1.5 A (combined total load)

- Maximum Elevated Ambient Temperature Rating: 55 °C (131 °F)
- Each high voltage relay in The Attendant pool controller is double-pole and rated at 3THP/30A for 240V and 1.5THP/30A for 120V equipment.

## Certifications



This product has been certified by IAPMO R&T against NSF/ANSI 50

# Installation Instructions

## Installing the Equipment

### The Attendant Mini Controller

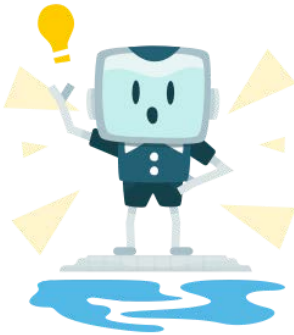
The Attendant Mini enclosure is a raintight IPX3 rated box designed for outdoor mounting and is also suitable for indoor mounting if desired. The box must be mounted **at least six (6) feet (two meters) away horizontally from the inside wall of the pool or spa.**

Always refer to your local regulations for the exact distance required to meet the codes for your installation.

The Attendant Mini is designed to be mounted **vertically** with the enclosure door opening from the right side to the left.

It is imperative that you **read and follow these instructions** as well as **adhere to all governing electrical, plumbing, and construction codes** during the installation and operation of this device.

### Tips for Choosing a Mounting Location



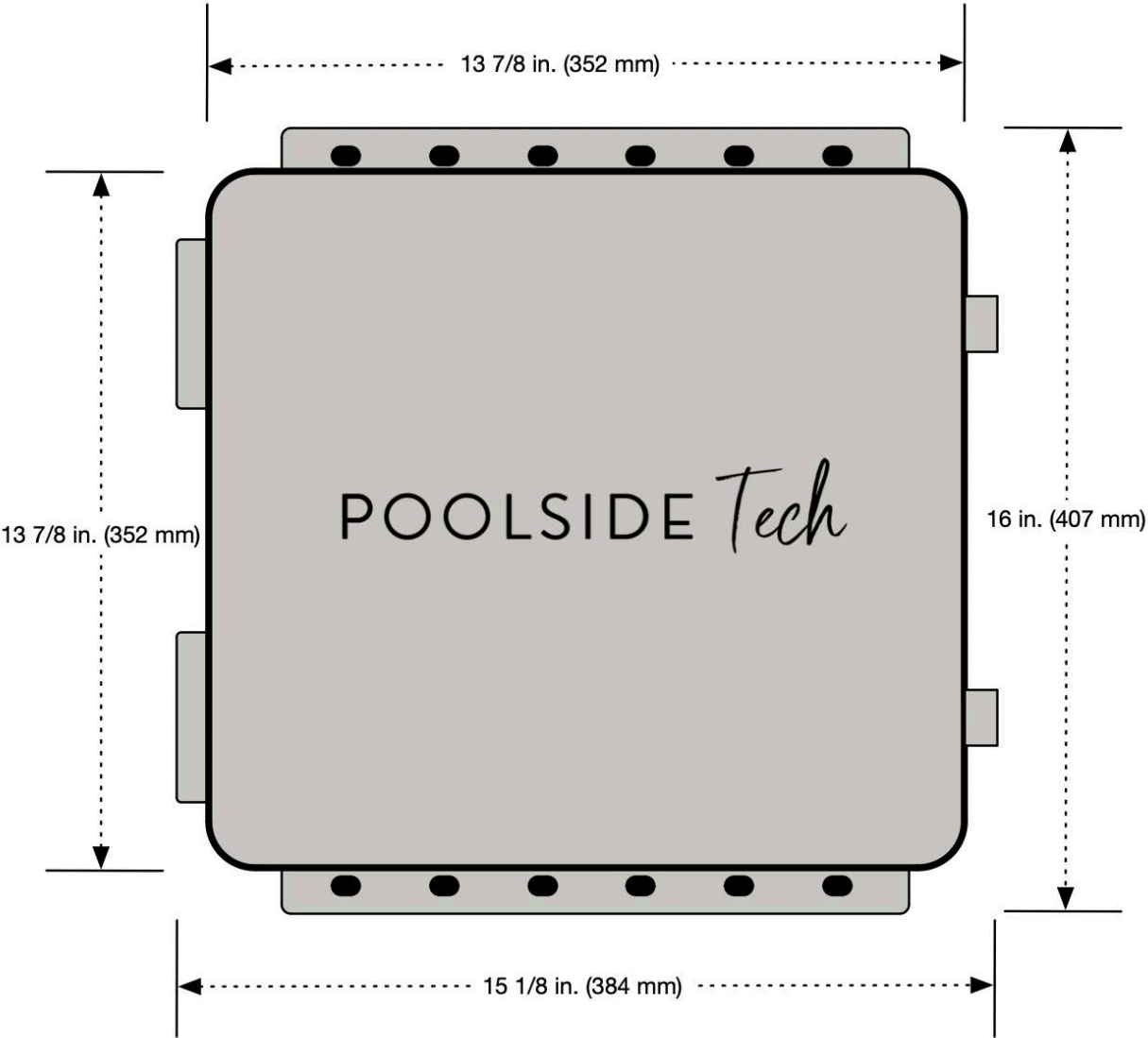
- Ensure you leave enough space for the wiring ports to run wires into them safely with room to work on them.
- Ensure you mount The Attendant Mini in an area with enough space for the enclosure door to swing open free of any obstructions.
- Take care that the wires for all the devices you will be attaching are long enough to reach the box if they are already installed.
- Mount The Attendant Mini at a height that allows the homeowner and/or service technician to access the button controls easily.



# Dimensions

The Attendant Mini controller is roughly **14" tall, 14" wide, and 4.5" deep**. The adjustable installation mounts will add an additional 1" to the top and bottom (or each side) of the controller depending on how it is configured. The door hinges stick out about ¾" on the left hand side of the front of the controller making it 15½" wide at the front.

When installing the controller, please ensure you leave enough space to open the door fully.



## Wiring Locations and Conduit Sizing

The Attendant Mini has six (6) openings for wiring high voltage components towards the right side of the controller and two (2) for low voltage components on the left. These compartments are separated by a safety divider inside the controller. Each wiring access hole is sized for ½" conduit.

### Risk of Electrical Shock or Electrocution!

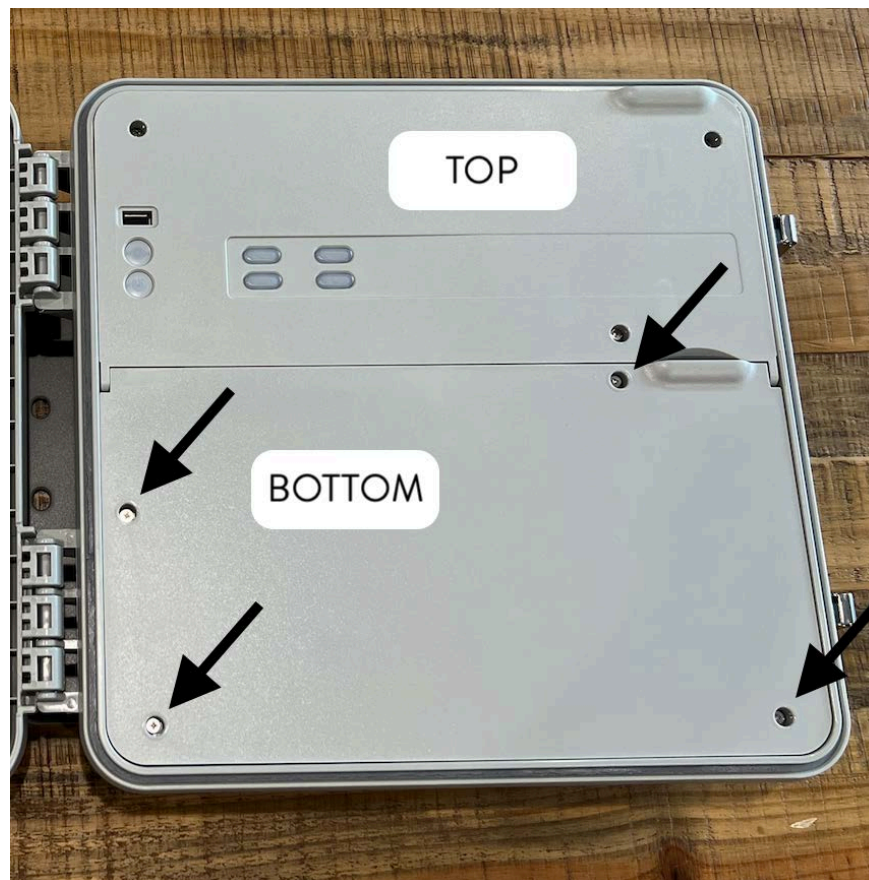


**Always disconnect power at the circuit breaker to all devices** before opening this device or connecting equipment! Failure to do so will create an electrical shock hazard that can result in death or serious injury.

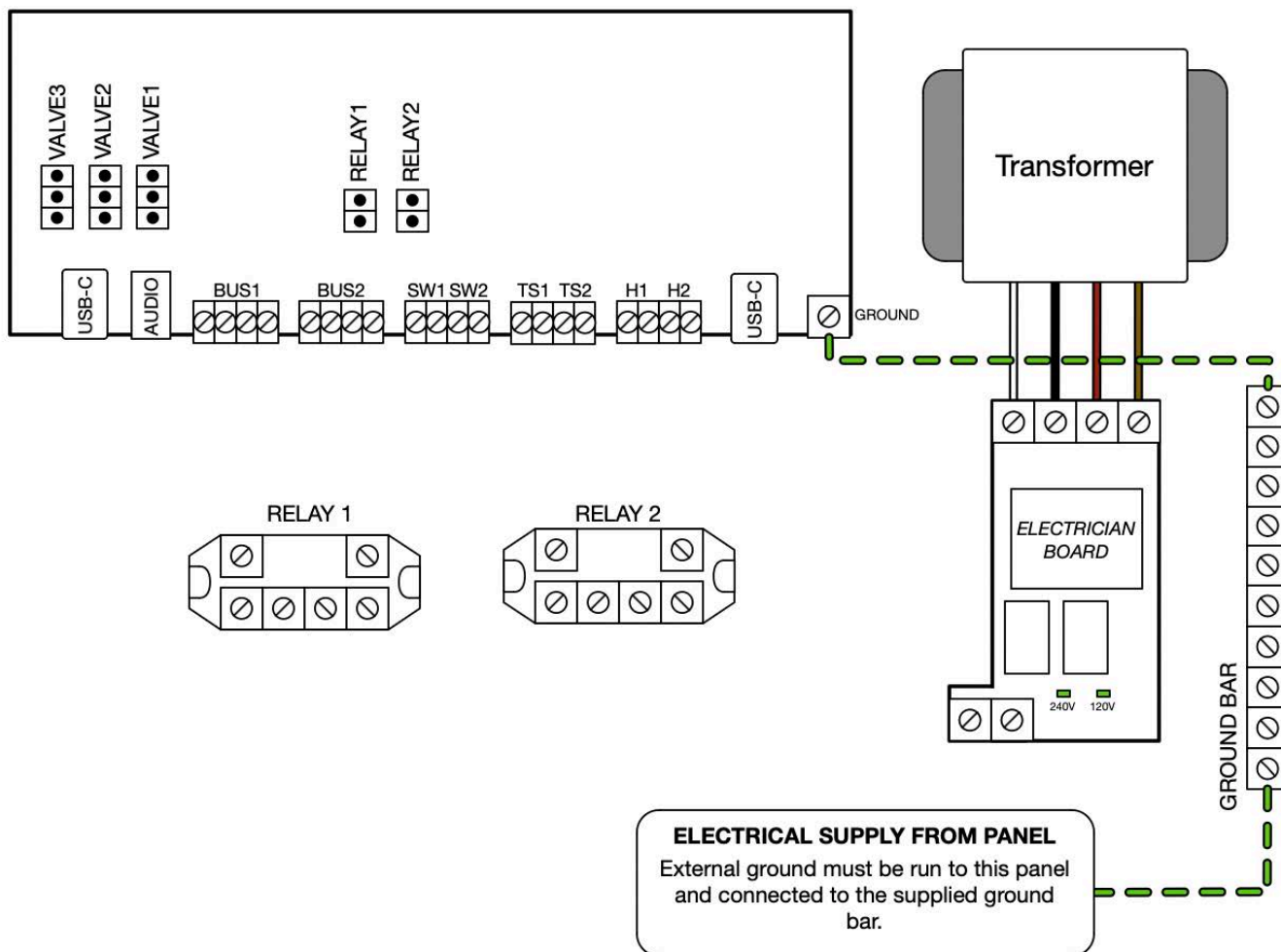
## Controller Layout and Inputs

The controller internals contain two (2) sections each with its own protective cover - one on top and another on the bottom. The top portion of The Attendant Mini houses the main circuit board and the low voltage connection ports (serial communication, sensors, dry relays, etc.) You can access the bottom portion of the controller internals by loosening the four (4) screws and then removing the bottom safety cover.

**NEVER ACCESS THE CONTROLLER INTERNALS WHILE THE POWER IS ON!**



The layout of the bottom portion of the controller:



This bottom portion of the controller contains all of the **high voltage** relays. The high voltage relays connect to the main circuit board by red/black wire to the board connectors labeled **RELAY1-2**.

By default, The Attendant Mini ships with two high voltage relays pre-mounted and connected to ports **RELAY1** and **RELAY2**.



**DANGER**

**This product must be installed by a licensed or certified electrician or a qualified pool professional in accordance with the current National Electrical Code (NEC), NFPA 70 or the Canadian Electrical Code (CEC), CSA C22.1. All applicable local installation codes and ordinances must also be adhered to. Improper installation will create an electrical hazard which could result in death or serious injury to pool users, installers or others due to electrical shock, and may also cause damage to property.**

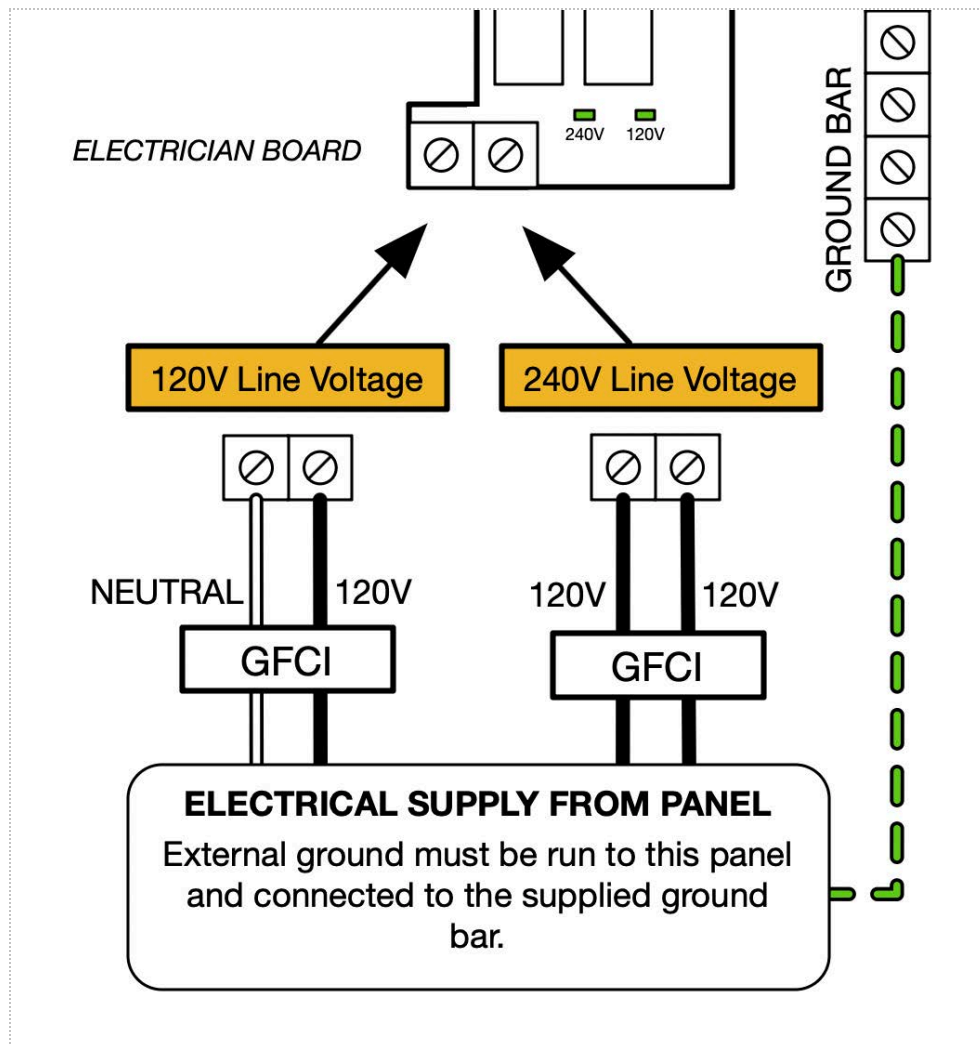
## Connecting The Attendant Mini to the Main Power Supply

Power is supplied to The Attendant Mini via the two terminals on our Electrician Board which is located on the bottom right side of the enclosure. This board can accept either 120V or 240V.

Please review the **following wiring diagram** to determine how the connection should be wired. **USE ONLY A SINGLE 120V OR 240V CONNECTION.**

**Our Electrician Board is designed to accept Hot/Neutral on either connector. While we do provide a default connection recommendation, hot and neutral can be switched without damaging The Attendant Mini.**

You **must ensure** you connect the **ground wire to the ground bar** when connecting the controller to the main power. Use only **copper** conductors when making connections to The Attendant Mini controller and its components.



# Equipment Wiring Connections

The Attendant Mini connects to your pool equipment via specific connectors.

- **BUS1 - BUS2** - Serial communication ports used to control devices using commands rather than power switching.
- **VALVE1 - VALVE3** - 24 VAC powered valve actuator controller ports.
- **SW1 - SW2** - 5 VDC switch-type ports used for devices like flow switches, pool covers, etc.
- **TS1 - TS2** - Temperature sensor ports used for thermistors and devices like pool covers and water level sensors.
- **H1 - H2** - Dry-contact ports typically used for control of devices that work in power stages rather than variable rate controls.
- **RELAY1 - RELAY2** - High voltage relays that are used to control single or multi-stage devices like pumps, lighting, etc.

The high voltage relays in The Attendant Mini controller are double-pole and rated at 3THP/30A for 240V and 1.5THP/30A for 120V equipment.

With the exception of bringing power to the controller box and connecting it via the terminal connector, all high voltage connections are made through the use of high voltage relays.

**Be sure to use the table in [Appendix A](#) (Connection Table) to record all connections for future reference and troubleshooting.**

# Pool Chemistry Management

If your system is equipped with pool chemistry capabilities and you have the appropriate equipment, The Attendant Mini will be able to read the water's current pH and/or ORP readings. The Attendant Mini can use this information to dose the appropriate amount of chemicals in your pool to bring your chemistry levels back to your desired comfort settings.

Pool Chemistry Management utilizing The Attendant Mini consists of three core components:

1. **One or More Chemistry Boards** - you will need to have at least one installed.
2. **pH and ORP Water Probes** - these are required to take readings from your water when it is operating.
3. **Chemical Dosing Equipment and Configuration** (optional) - having a salt cell, muriatic acid or chlorine dispensing pump wired to The Attendant Mini will permit automatic control of your water's pH and sanitization levels.



## Installation of the Chemistry Module

*This chapter should be followed when installing an initial chemistry board into an Attendant Mini that does not already have one installed.*

The Chemistry Module is also known as the “**Bottom Board**” in the mobile app.

Prior to installation, ensure that you have the following available:

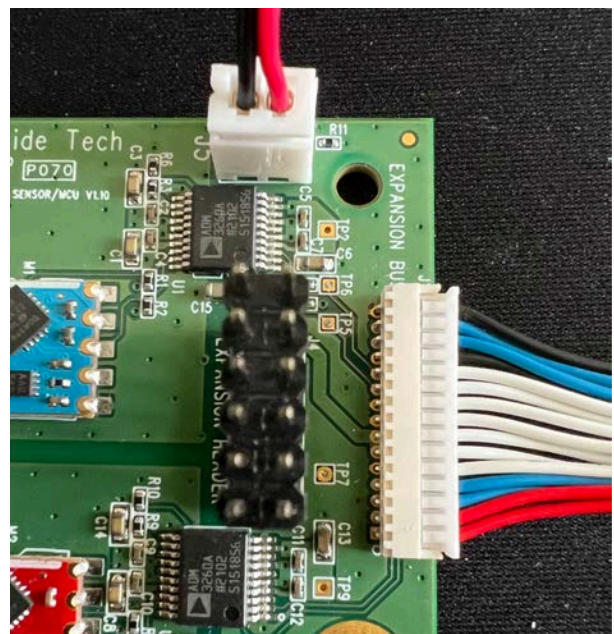
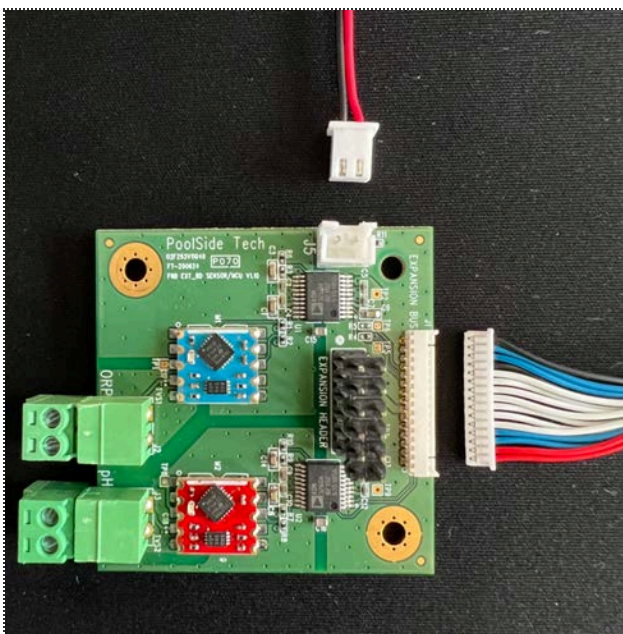
- The Chemistry Module itself
- 2 M3 mounting screws (included with the kit)
- 2 communication wires to connect the Chemistry Board to the main board of The Attendant Mini (included with the kit)
- #2 Phillips screwdriver

**SHUT OFF ALL POWER to The Attendant before attempting this procedure. Do not simply turn the controller off; Be sure to unplug the cable from the outlet or turn off the breaker.**

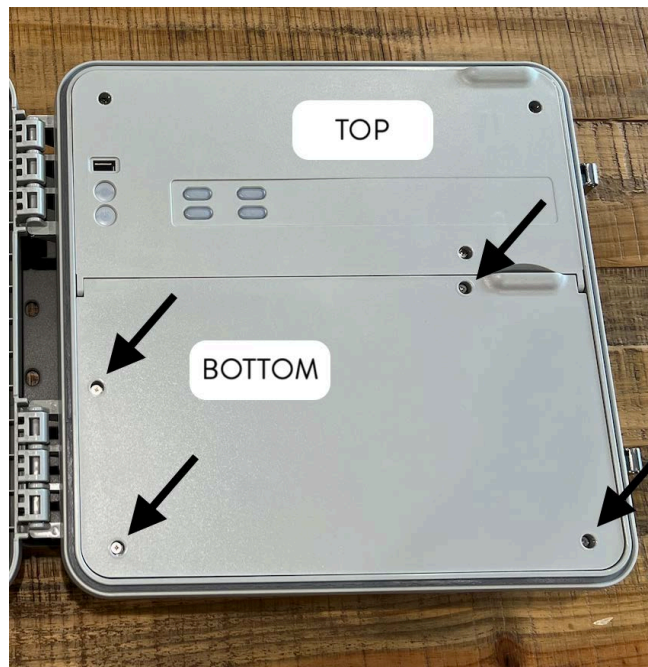
Be sure to discharge any static electricity from your body before handling the board and wires. You can do this by using an anti-static wrist strap, or by touching a grounded metal enclosure holding something metallic, like a key.

1. **SHUT OFF ALL POWER** to The Attendant Mini.
2. Prior to mounting the Chemistry Module, carefully **install the two communication cables provided** with the Chemistry Board kit into the connectors as shown below.

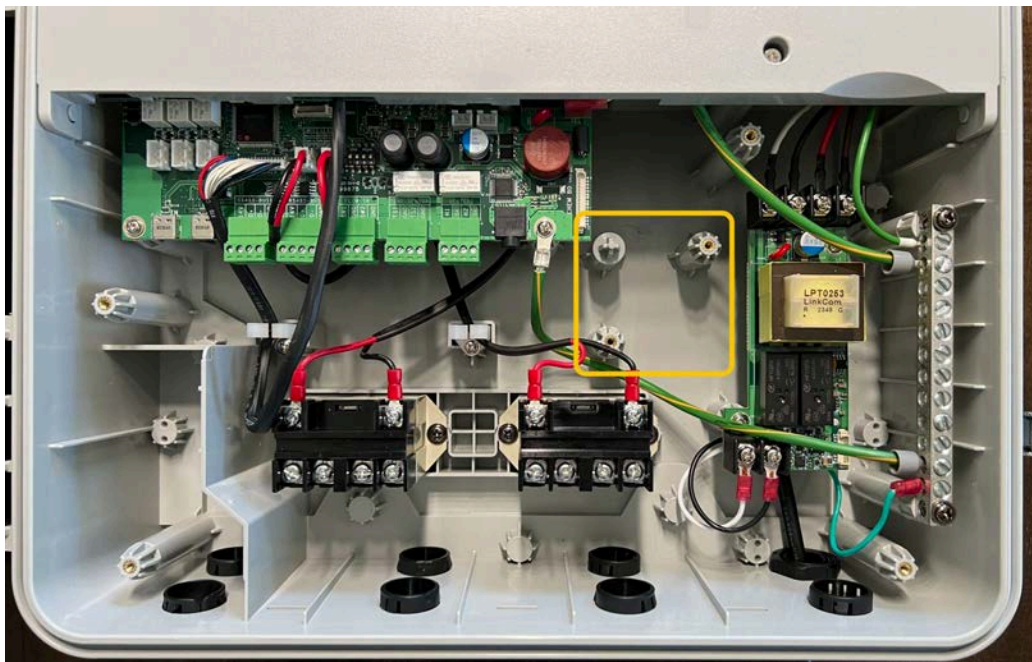
The 2-wire cable is placed into the **J5 connector**, and the wider, 15-wire cable is placed into the **Expansion Bus connector**.



3. On The Attendant Mini, **loosen the 4 mounting screws on the BOTTOM cover and remove the cover.**

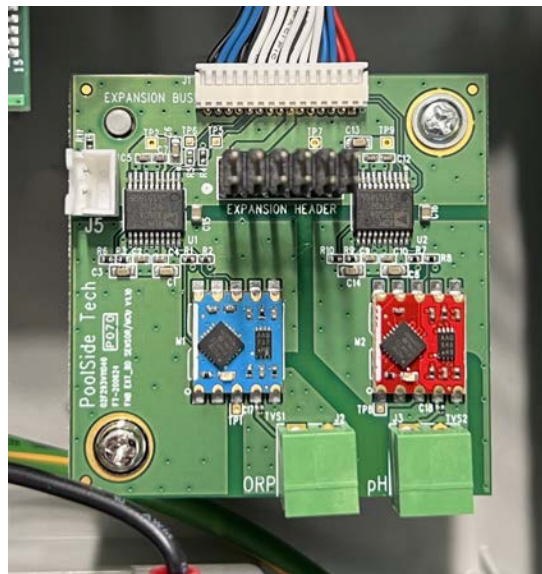


4. Locate the Chemistry Module mounting pillars near the center of the compartment. See image for placement.



5. Install the Chemistry Module by **gently** placing the board over the area and **holding it in place while inserting and tightening the mounting screws** (included). Be careful **not to over-tighten** the screws!

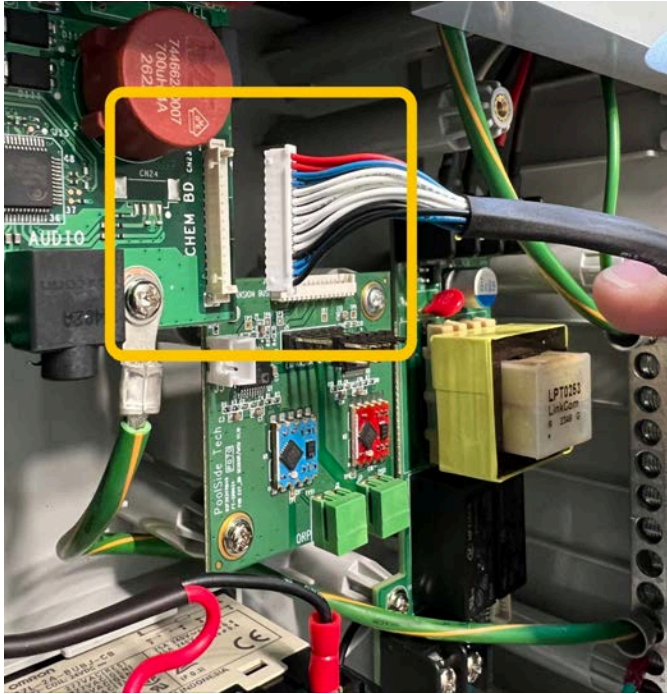




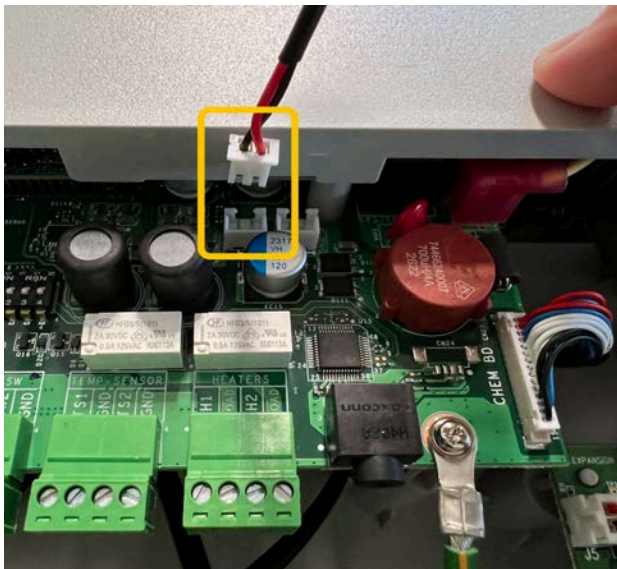
Once the Chemistry Board is securely fastened to the mounting pillars, you can continue to connect the communication wires to the main board.

## Connecting the Communication Wires

1. Take 15-pin cable and connect the other side to the **CHEM BD** socket on The Attendant Mini.



2. Next, take the 2-pin cable and connect that to the **GPIO** socket on The Attendant Mini.



3. Once you've completed connecting **both** wires, you can continue to [Installing the pH and ORP Probes](#), or you can reattach the bottom cover and power The Attendant Mini back on.



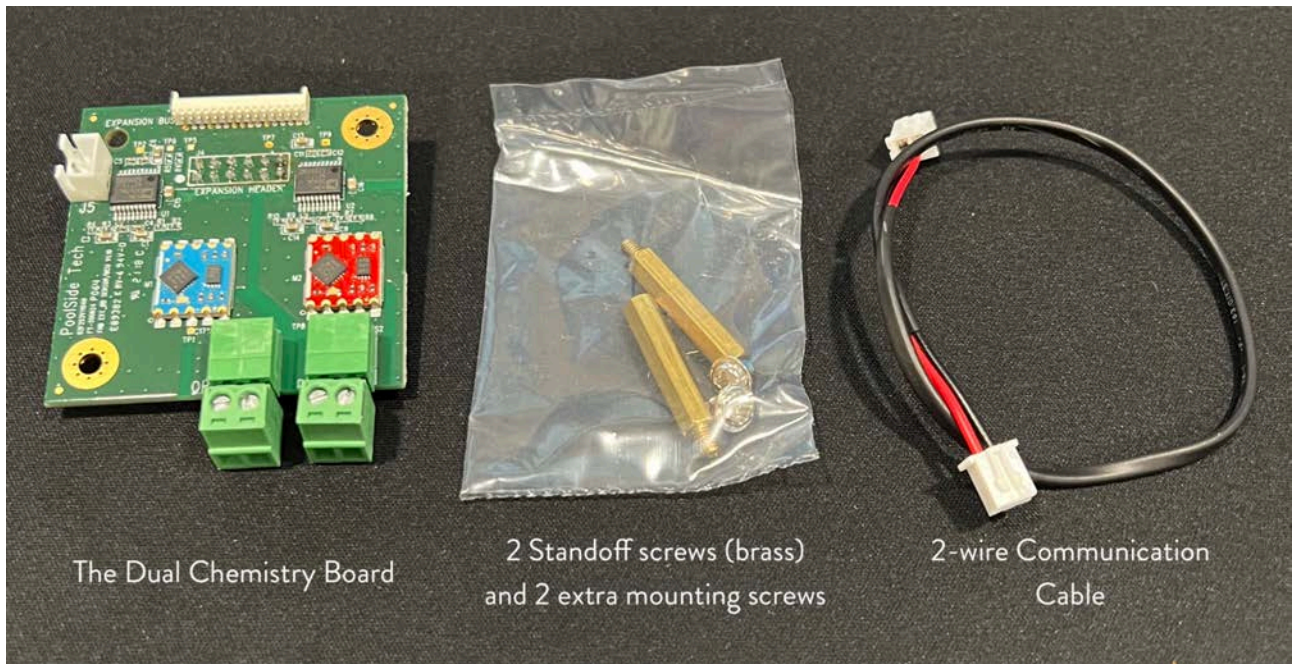
## Installation of the Dual Chemistry Module

*This chapter should be followed when installing the second Chemistry Module where one is already installed.*

The Dual Chemistry Module is also known as the “**Top Board**” in the mobile app.

Prior to installation, be sure to have the following ready:

- The Dual Chemistry Module itself
- 2 - M3 mounting screws (included with the Dual Body of Water Chemistry kit)
- 2 - board standoff screws (included with the Dual Body of Water Chemistry kit)
- The 2-wire communication cable to connect the board to the main board of The Attendant (included with the Dual Body of Water Chemistry kit)
- #2 Phillips/crosshead screwdriver
- Small adjustable wrench or 5mm socket wrench

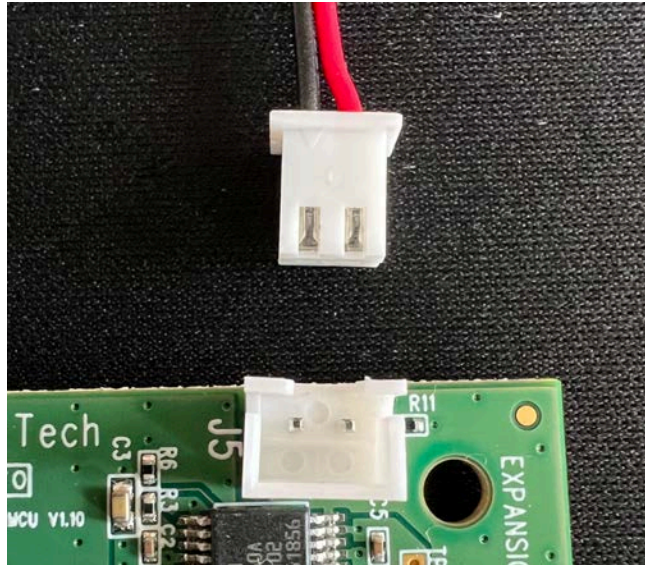


**SHUT OFF ALL POWER to The Attendant before attempting this procedure. Do not simply turn the controller off; Be sure to unplug the cable from the outlet or turn off the breaker.**

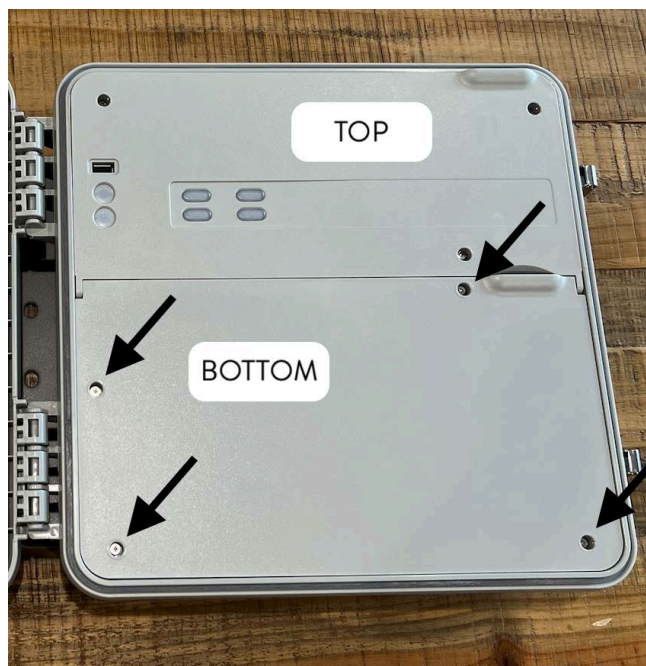
Be sure to discharge any static electricity from your body before handling the board and wires. You can do this by using an anti-static wrist strap, or by touching a grounded metal enclosure holding something metallic, like a key.

1. **SHUT OFF ALL POWER** to The Attendant Mini.
2. Prior to mounting the Dual Chemistry Module, carefully **install the single 2-pin cable provided** with the Dual Chemistry Board kit into the connector as shown below.

The 2-wire cable is placed into the **J5 connector**.

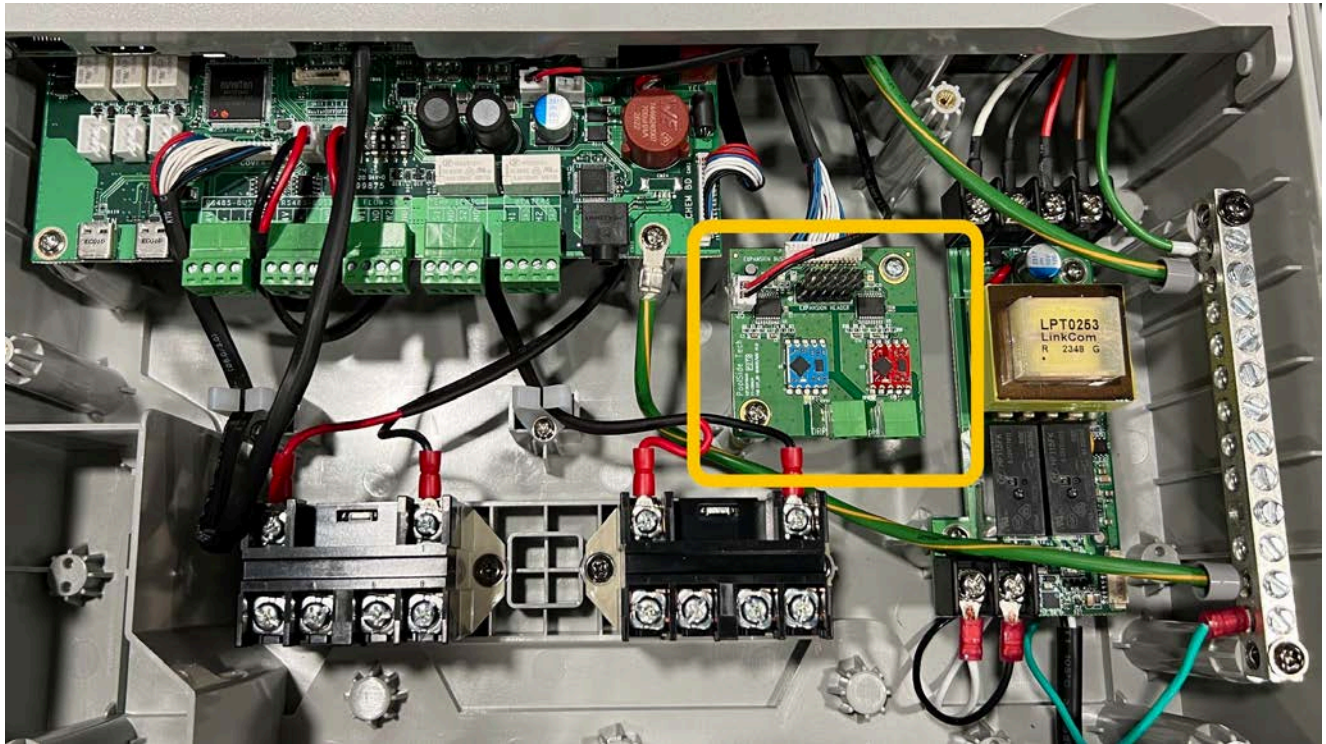


3. On The Attendant Mini, **loosen the 4 mounting screws on the BOTTOM cover and remove the cover.**

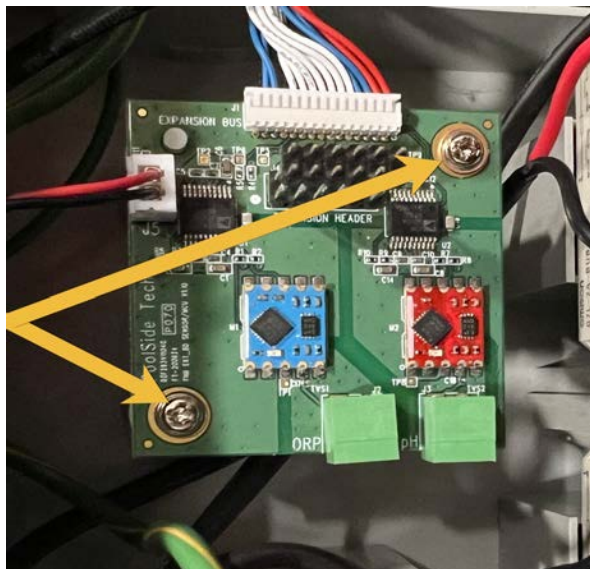




4. Locate the currently installed Chemistry Module near the center of the compartment.

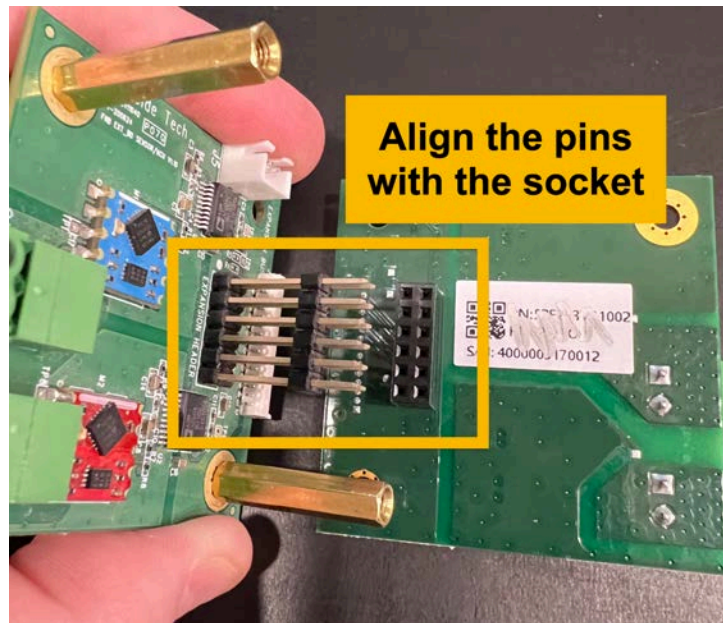


5. Next, you will need to **remove** the two crosshead screws that are currently installed on the first Chemistry board - the “bottom” one and **replace them with the 2 standoff screws** provided with the Dual Chemistry kit. Use a small wrench or 5mm socket to gently tighten each standoff. Do not over-tighten!

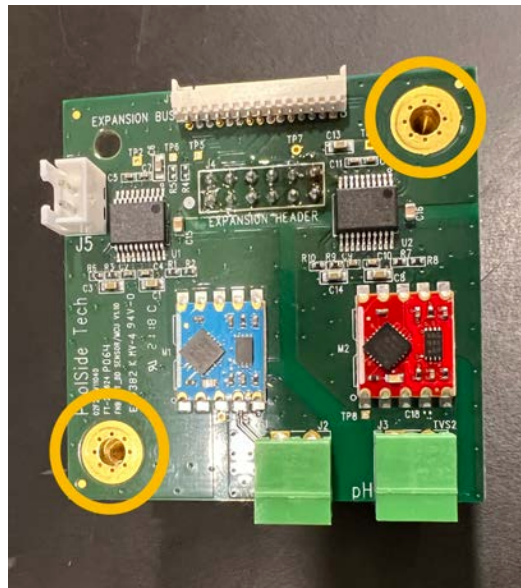


6. **Connect both boards using the 10-pin expansion connector**

Align the 10-pin expansion connector from the bottom board with the 10-pin socket on the underside of the Dual Chemistry board and connect the 2 boards together on top of one another.

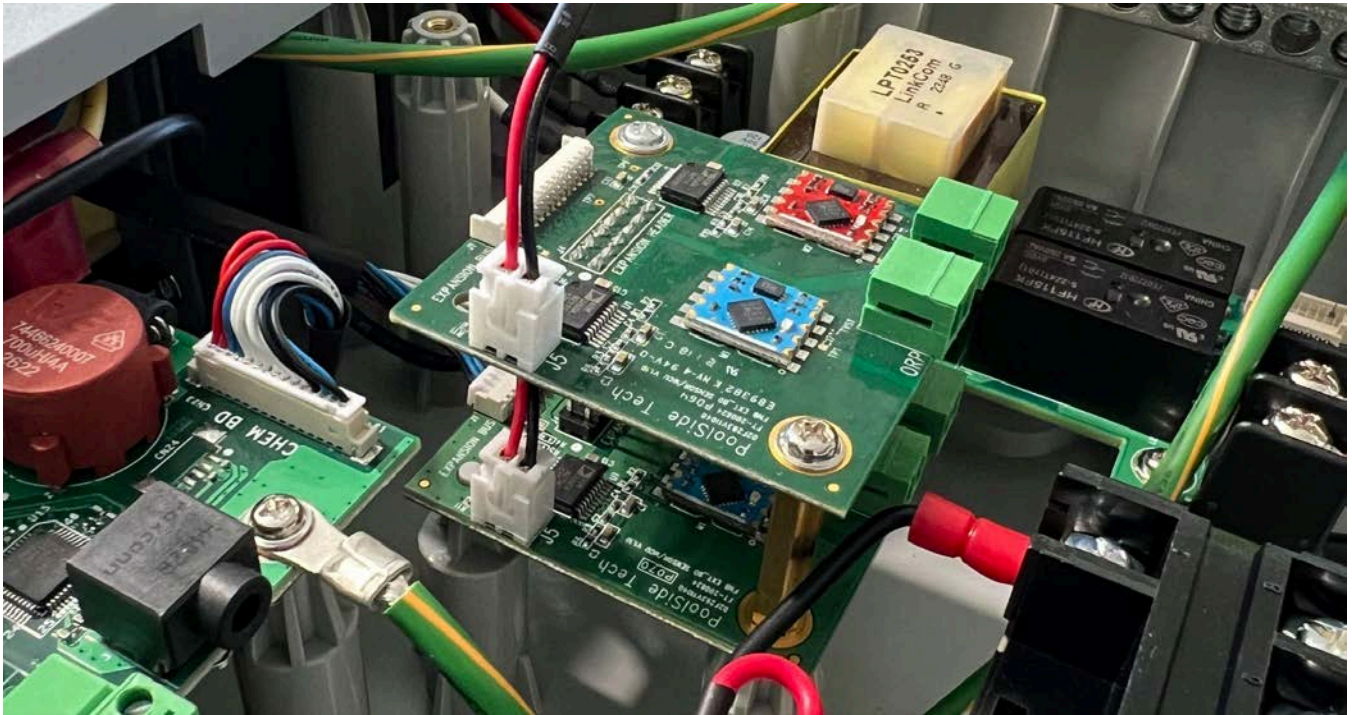


Gently push down on the top board so that the holes from the standoffs are right below the top board mounting holes. Do not use excessive force or else you could damage the connectors and possibly both Chemistry boards.

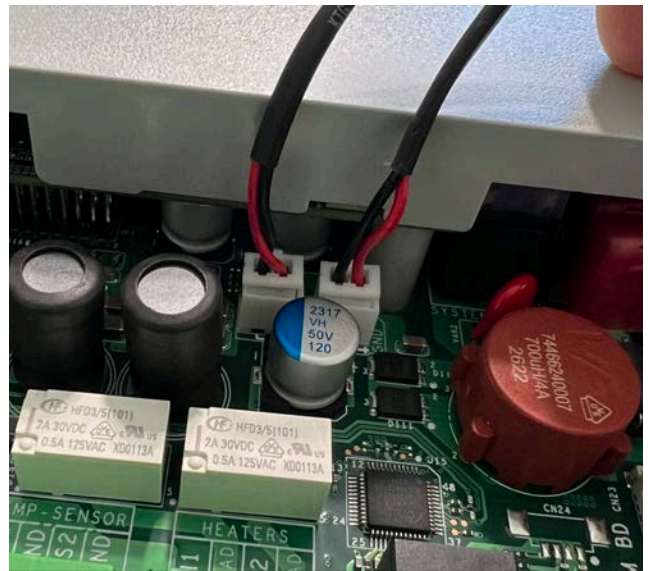
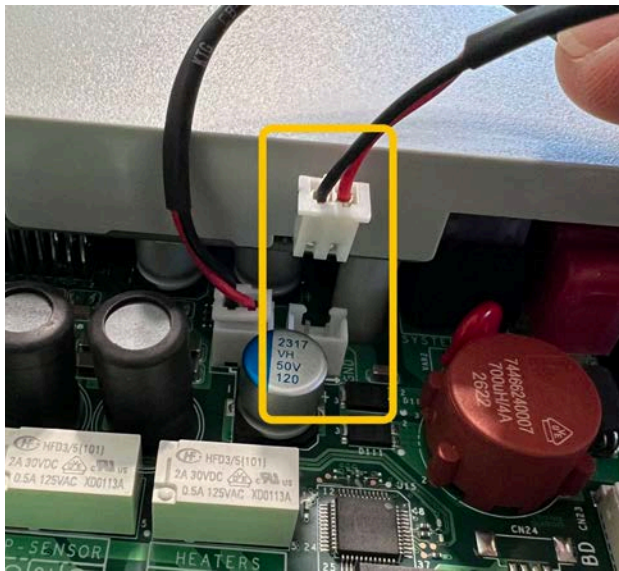


7. Use the 2 screws removed from the bottom board, and fasten down the top board to the standoff screws.





8. Next, take the 2-pin cable and connect that to the **GPIO2** socket on The Attendant Mini.



9. Once you've completed connecting the 2-pin wire, you can continue to [Installing the pH and ORP Probes](#), or you can reattach the bottom cover and power The Attendant Mini back on.

## Installation of the pH and ORP Probes

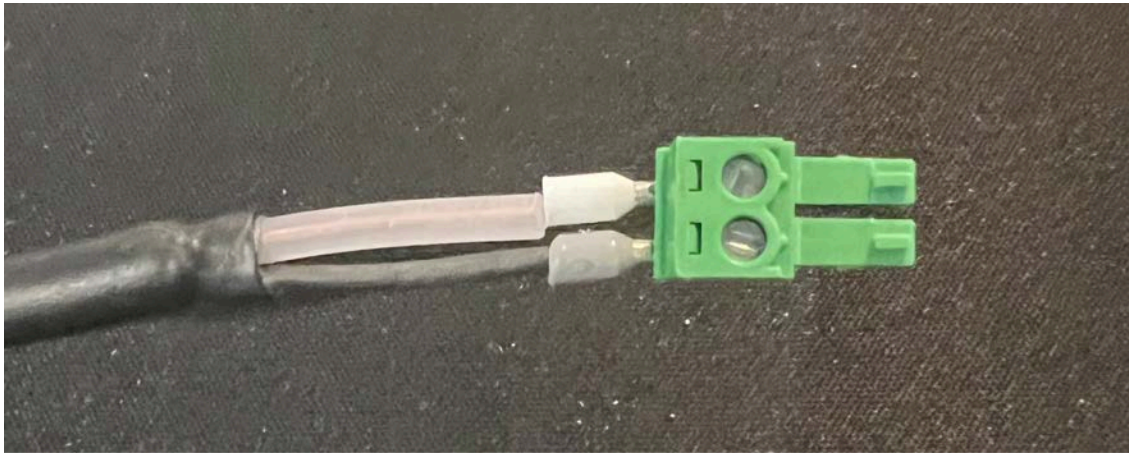
The Attendant is capable of reading both pH (potential Hydrogen) and ORP (Oxidation-Reduction Potential) when equipped with a Chemistry Board and probes are connected that read those values.

### Wiring Probes to The Attendant Mini

Wiring the water sensors onto the expansion board requires connecting the ORP sensor to the terminals labeled ORP and connecting the pH sensor to the terminals labeled pH.

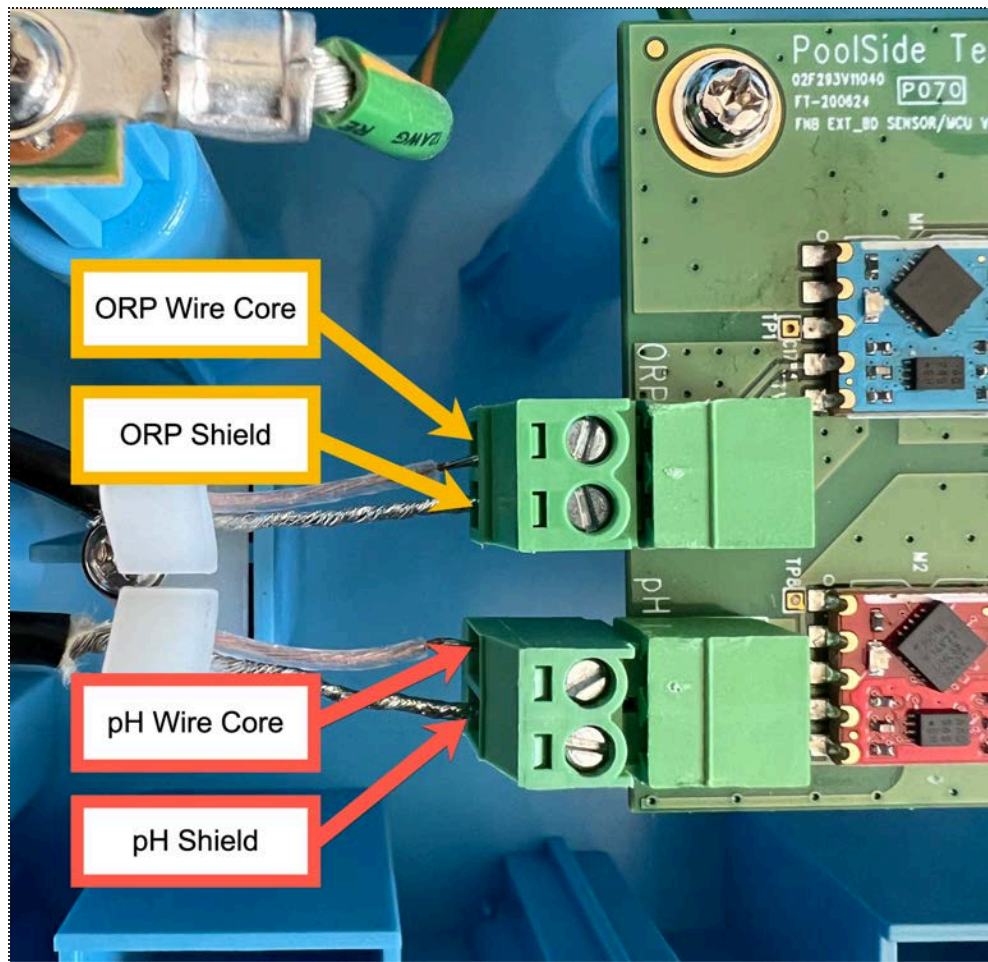
For both pH and ORP probes, the wire hosts both a “core” wire and a shield wire. The core wire typically is encased in a semi-clear plastic coating and the shield wire could be something formed by twisting the shielding into a “wire” and other times, the shield wire looks just like a standard cable.

The wire core should be connected to the top of the connector, and the shield to the bottom. There have been several different models/brands used, and each looks slightly different.



Depending on where you get your cables from, each could look different. Please review the following to match the cable you have with how each wire should be placed into the probe connector.

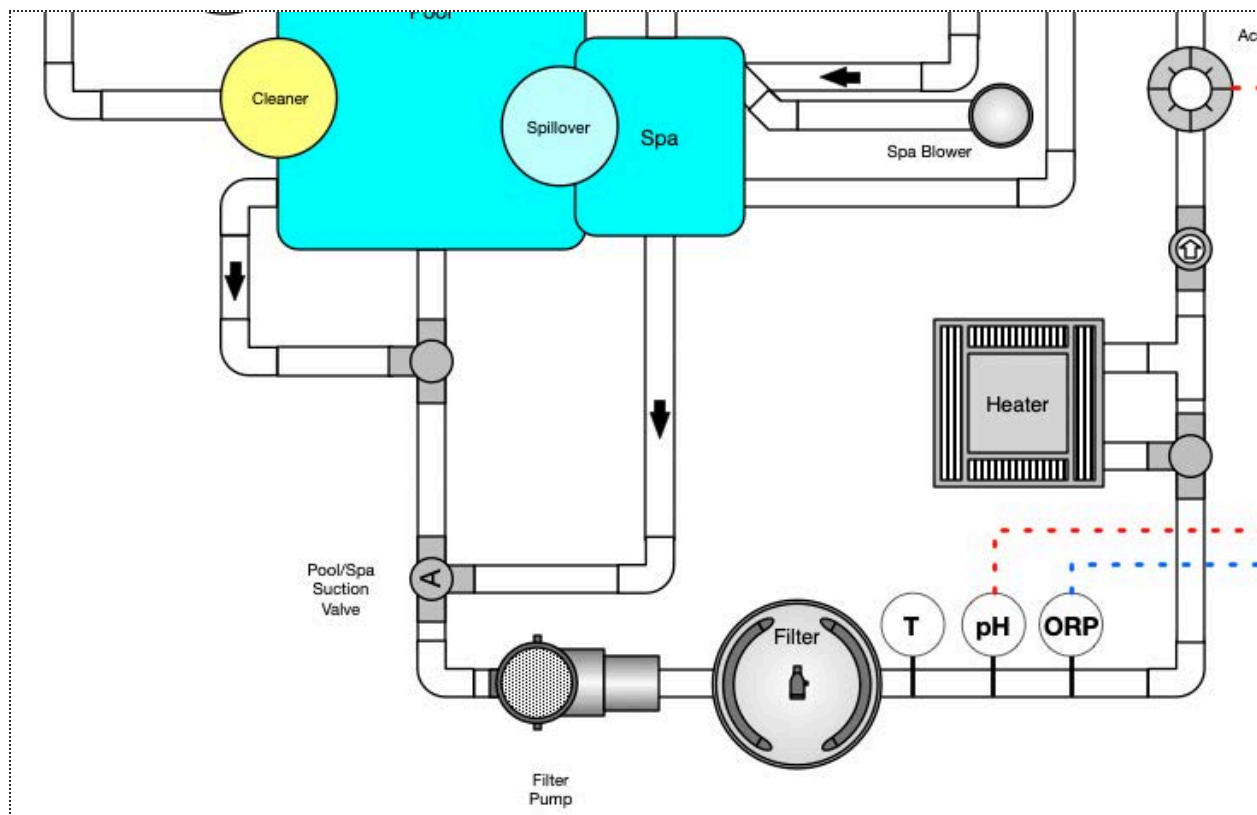




## Installing Probes into the Pool Plumbing

When installing the probes into the pool plumbing it is important to remember that debris can contaminate the probes and affect the readings from the pool. It is recommended that all probes are installed into a flow cell which has been plumbed into the water lines after the filter.

In the following diagram the pH and ORP probes are marked and installed after the temperature sensor and filter.



## Applicable Operating Ranges for pH and ORP Probes

**pH Probe:** pH Range: 6.8 to 8.2

**ORP Probe:** ORP Range: 0 to 999 mV

## Parts and SKU List

To order The Attendant, please reach out to your preferred distribution partner or buying group. A list of these can be found on our knowledge base [here](#).

Part Number	Description
ATT-2	The Attendant - Including 2 High Voltage Relays
ATT-2-CHEM	The Attendant + Chemistry - Including 2 HV Relays
ATT-2-DUALCHEM	The Attendant + Dual Chemistry - Including 2 HV Relays
ATT-4	The Attendant - Including 4 High Voltage Relays
ATT-4-CHEM	The Attendant + Chemistry - Including 4 HV Relays
ATT-4-DUALCHEM	The Attendant. + Dual Chemistry - Including 4 HV Relays
ATT-6	The Attendant - Including 6 High Voltage Relays
ATT-6-CHEM	The Attendant + Chemistry - Including 6 HV Relays
ATT-6-DUALCHEM	The Attendant + Dual Chemistry - Including 8 HV Relays
ATT-8	The Attendant - Including 8 High Voltage Relays
ATT-8-CHEM	The Attendant + Chemistry - Including 8 HV Relays
ATT-8-DUALCHEM	The Attendant + Dual Chemistry - Including 8 HV Relays
ATT-CHEM	Including Add-on Chemistry Board and 2 25ft BNC Cables, necessary for leveraging our Chemistry Management Features.
ATT-DUALCHEM	Including Add-on Chemistry Boards and 4 25ft BNC Cables, necessary for leveraging our Dual Body of Water Chemistry Management Features.
ATT-DUALCHEM-EXP	Including 1 EXP Card and 2 25ft BNC Cables, necessary for leveraging our Dual Body of Water Chemistry Management Features.
ATT-CPK	Including a pH and ORP probe necessary to track and record chemistry values via the Poolside Attendant app.
ATT-HVRK	Including 10 High Voltage Relays allowing for expansion on larger system installations.
ATT-HVR2P	Including 2 High Voltage Relays allowing for expansion on larger system installations.
ATT-LACK	Including 8 15ft cables that can be cut to length, allowing for relay connections to be made to an existing legacy automation system.
ATT-TSK	Including 2 Thermistors & 2 Clamps
ATT-CFK	Including 1 set of pH and ORP probe calibration fluids.
ATT-CHEM-CABLE	Including 1 25ft BNC pH/ORP probe replacement cable.

## Replacement Parts List

The following replacement parts are available through **authorized Warranty Stations only**.

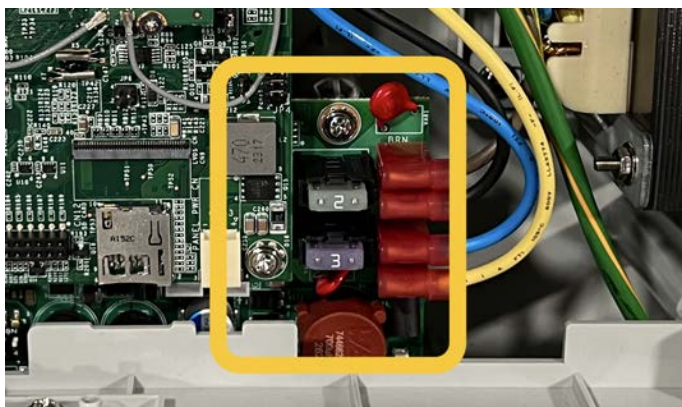
Please reach out to us via email at [support@poolside.tech](mailto:support@poolside.tech) or via telephone at +1 (267) 810-0600 for inquiries.

Part Number	Description
ATT-PH-CALIBRATION	pH Calibration Fluid (1 each pH 4, 7, 10)
ATT-ORP-CALIBRATION	ORP Calibration Fluid (1 pouch)
ATT-TRANSFORMER-V1	Attendant Transformer
ATT-HUB-BOARD-V1	Attendant Connections Module
ATT-TOP-BOARD-V1	Attendant Compute Module w/LCD screen and top cover
ATT-HVRIP	High Voltage Relay (Single Relay/Cable)
ATT-PH-PROBE	pH Single Replacement Probe
ATT-ORP-PROBE	ORP Single Replacement Probe

## Fuse Specifications

The Attendant Mini is equipped with 2 replaceable fuses. These are standard 32V Mini blade fuses, commonly used in automobiles. There is one 2 amp and one 3 amp fuse directly behind the upper hinged cover of The Attendant Mini.

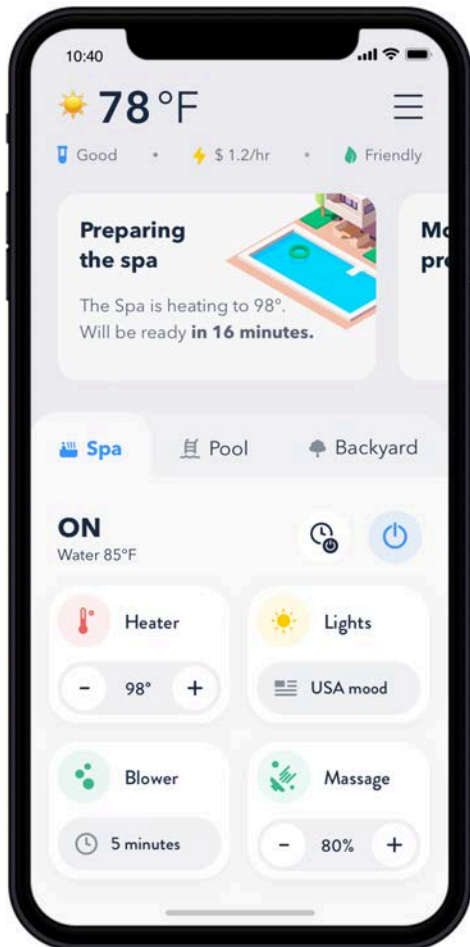
**SHUT OFF ALL POWER to The Attendant Mini before attempting to inspect or replace fuses!**



# Initial Software Configuration Instructions

## Registering The Attendant Mini

### Use the Poolside Mobile Application



The Attendant Mini requires a connection to the Internet in order to communicate with the mobile application as well as receive cloud updates. You can use the onboard Wi-Fi or Ethernet connections to connect The Attendant to your home network.

In order to get The Attendant Mini connected and configured, you will need to download and use the Poolside mobile application. It is available on both Google Play (Android) and the App Store (Apple iOS).



Once you have the Poolside mobile app installed, you can create a new account or log into an existing one.

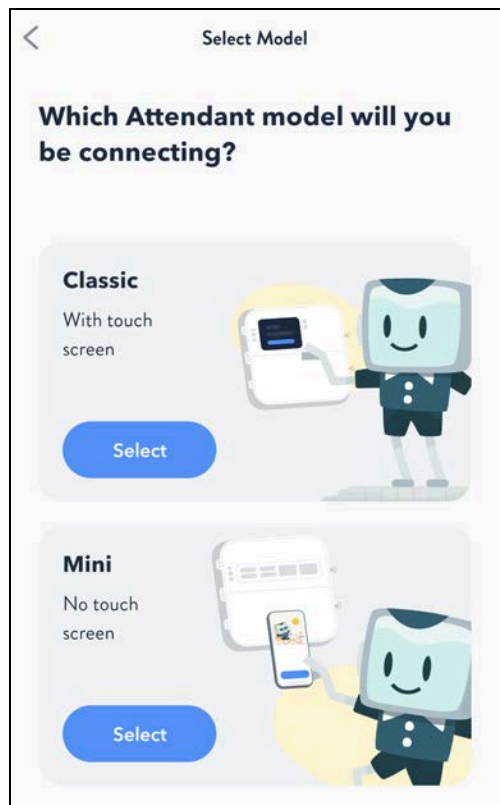
**Tap on “Sites” in the app and press the blue plus (+) button to begin the process of setting up your Attendant Mini.**

Please see the **Quick Setup Guide** located on our online knowledgebase @ <https://poolside.support!>

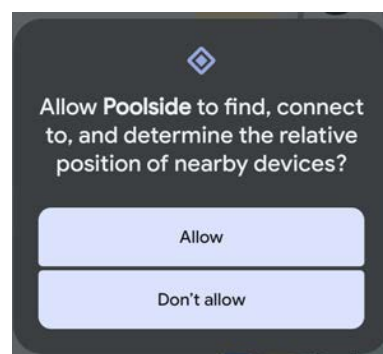
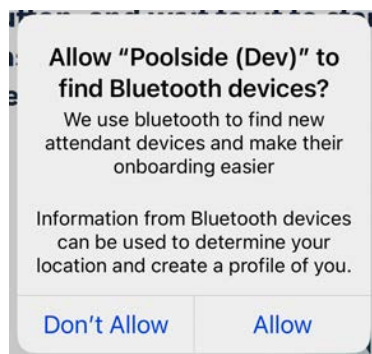
## Getting Connected to The Attendant Mini

The Attendant Mini has a smaller form factor, and does not come with a built-in touch screen display. In order to get The Attendant Mini configured and registered, you first need to use the Poolside mobile app and pair your mobile device to it using **Bluetooth**.

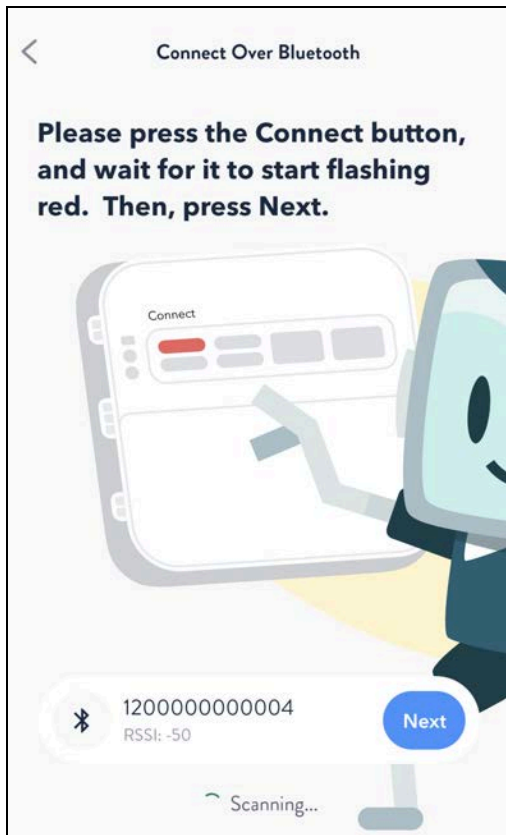
After pressing the **plus (+)** symbol in the **Sites** menu in the mobile app, you'll be asked to select which model of The Attendant you are registering. **Select Mini to continue.**



*You might be asked to approve additional permissions on your mobile device. You must allow the app access to Bluetooth, Nearby Devices, and Location so that it can find and connect to The Attendant Mini.*



*Poolside Tech only uses this information for connecting and interfacing with The Attendant and Attendant Mini controllers. Please see our [Privacy Policy](#) for additional information.*



The mobile app will begin to scan around your physical location and search for an Attendant Mini that is in pairing mode.

Press the “**Connect**” button on The Attendant Mini for a moment and release. This will place it into pairing mode, and the button should begin flashing **red**.

Once that button is flashing red, you should see a serial number shown that matches the one printed on the interior door of The Attendant Mini.

Press the **Next** button to continue.



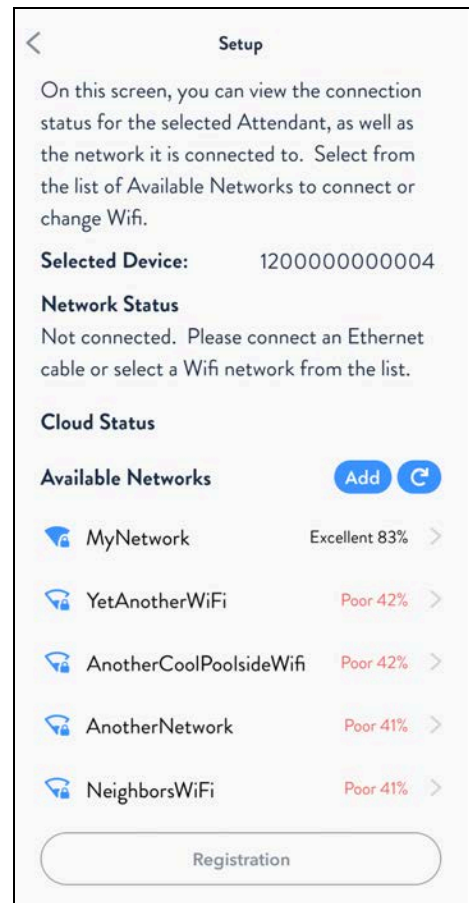
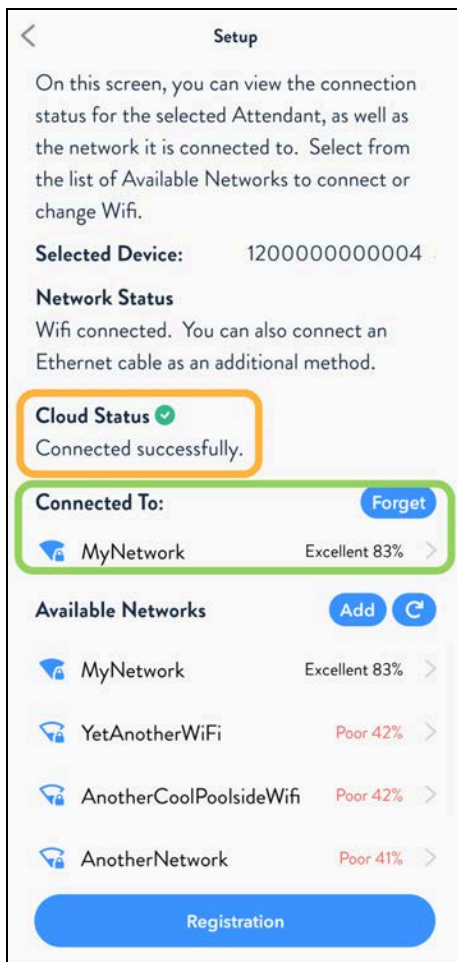
## Connecting to a Network

You'll see a list of WiFi networks that have been detected. Also shown is the serial number, and current Network and Cloud connection status.

You can attach a hard-wired Ethernet cable, or select one of the available networks listed. If a password is required to connect, you will be prompted to input it.

If you **don't** see the name of the WiFi network you wish to connect to, first tap on the **circle/refresh** button to update the list. This can take up to 60 seconds to finish.

If you know the SSID of the network you want to connect to, but it isn't shown in the list (*usually because the SSID is not being published on purpose*) you can tap on the **Add** button to manually enter the SSID and password.



Once The Attendant Mini has connected to either WiFi or Ethernet - you will see the Network and Cloud Status change.

You should see "**Cloud Status: Connected successfully.**" This indicates that The Attendant was able to not only connect to the network, but also is able to communicate with the Poolside Cloud servers.

The **Registration** button at the bottom of the screen should be **enabled** now. Tap to continue and follow the instructions in the mobile app.





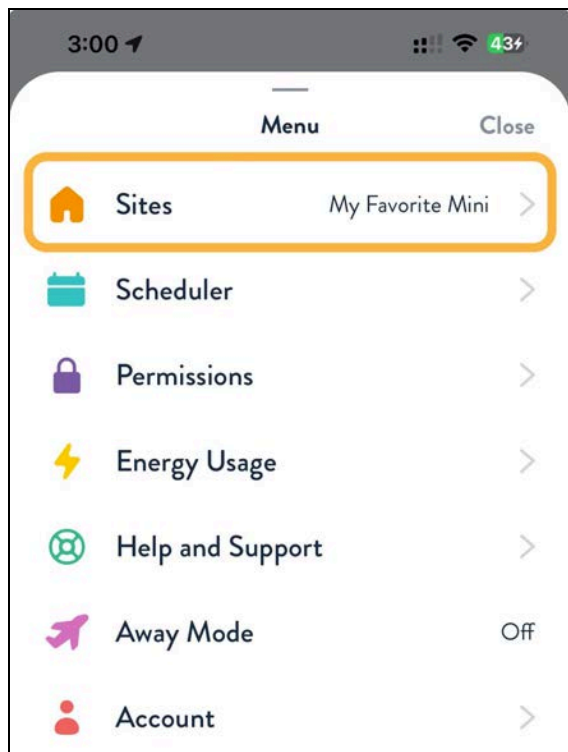
## NOTE

The Attendant only supports **DHCP (Dynamic Host Configuration Protocol)** network connections for both Ethernet and Wi-Fi. Please ensure this is available and configured on the local network.

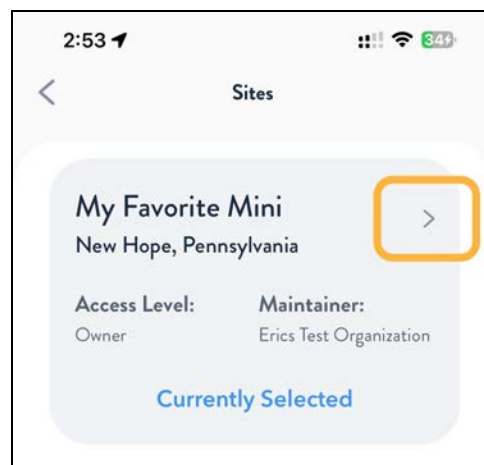
## Managing the WiFi Connection of The Attendant Mini After Initial Setup

If you ever need to update the WiFi configuration of The Attendant Mini after you've completed the initial setup, you can do so using the Poolside mobile app.

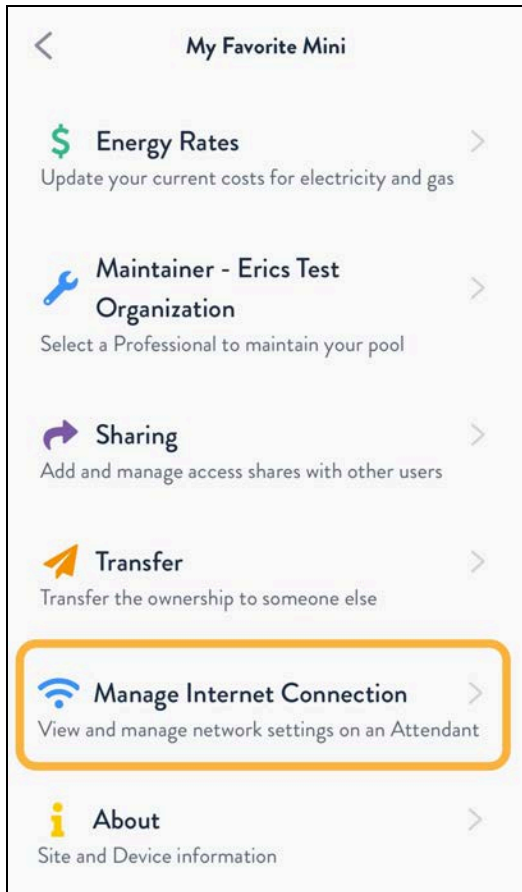
Before starting, make sure you are relatively close to The Attendant Mini that you need to update. You will be connecting to the device using Bluetooth, and this requires you to be near for the connection to work.



From the main screen, tap on the **Hamburger menu icon**, and then tap on **Sites**.

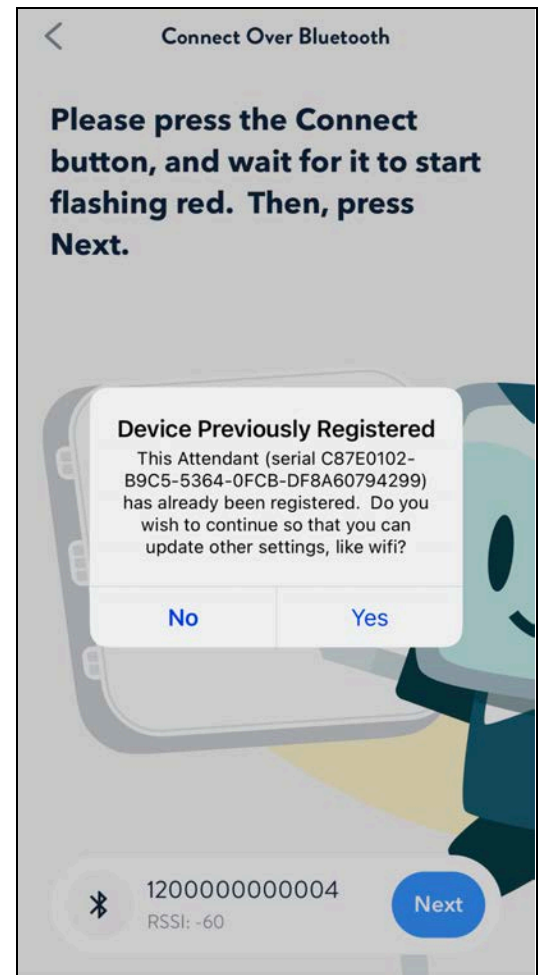


Find the site that you need to update, and tap on the **right arrow**.



Tap on **Manage Internet Connection**. Press and release the **Connect** button on The Attendant Mini, and the button should begin flashing red. Go back to the mobile app, and press **Next** after seeing the serial number appear.

Press **Yes** to the **Device Previously Registered** popup.



From the following **Setup** screen, you can select another WiFi SSID connection or Add a new one that is not listed. When you have successfully connected, make sure the Cloud Status says "Connected successfully."

## Additional Safety Instructions

- **WARNING** - Failure to follow warning notices and safety instructions may result in property damage, personal injury, or death.
- **WARNING - Hazardous Pressure Hazard:**
  - Pool and spa fluid systems operate under hazardous pressure during start up, normal operation and after pump shut down. Stand clear of pumps and filters during start up.
  - Failure to follow safety and operation instructions may result in violent separation of the pump housing, pump cover, filter housing or clamps due to system pressure, which may cause property damage, severe injury or death.
  - Before servicing pool and spa equipment, ensure all system and pump controls are in the off position.
  - Before starting the system pump, ensure that all valves are in a position such that water flows back to the pool or spa.
  - Do not change filter control valve position during normal operation, shut the pumps off first.
- **WARNING - Suction Entrapment Hazard:**
  - The suction in suction outlets (including damaged, broken, missing, or unsecured outlets) can cause severe injury and possibly death due to the following hazards:
    - Hair can become entangled in a suction outlet cover.
    - Inserting limbs into an open suction outlet sump or cover can result in mechanical binding or swelling of the limb that was inserted.
    - Jewelry, swimsuit, hair accessories, fingers or toes can be caught in an open suction outlet cover resulting in a mechanical entrapment.
    - Negative pressure applied to a large portion of the body or limbs can result in an entrapment.
    - Suction applied directly to the intestines through an unprotected suction outlet can cause evisceration/disembowelment.
  - To reduce the risk of Suction Entrapment Hazards:
    - When suction outlets are small enough to be blocked by a person, ensure that a minimum of two outlets per pump are installed and that valves are configured to ensure suction from both.
    - Suction outlets on the same surface connected must be at least 1 meter (3 feet) apart.
    - Dual suction (or main drains) fittings shall be installed in locations that avoid dual blockage by a single person.
    - Dual suction (or main drains) fittings shall not be located on seating areas or on the backrest of a seating area.

- Do not use a pool or spa if the suction outlets are missing components or damaged in any way.
- Ensure suction outlets are installed in accordance with the latest ASME, ASPA standards and CPSC guidelines and that all applicable national, state and local codes are followed.
- Failure to remove any suction outlet plugs used for winterizing or testing the pool or spa can increase the likelihood of a suction entrapment listed above.
- Keep all suction outlets and their components clear of debris (leaves, hair, dirt, etc.) as this can increase the likelihood of a suction entrapment listed above.
- Suction outlets should be inspected regularly to ensure they are not damaged or missing any components and replaced if they are found to be defective or older than 10 years.

## Additional Warnings

Read and follow all instructions contained in this manual.

- **DANGER - Risk of Electric Shock.** The installation of this product must be performed by a qualified and licensed pool technician in the jurisdiction in which it is being installed. If there are no governing state or local requirements, a professional with sufficient experience in pool equipment installation and maintenance can be used to ensure that all instructions in this manual can and will be followed exactly.
- **DANGER - Risk of Electric Shock.** All electrical work must be performed by a licensed electrician and conform to all national, state, and local codes.
- **WARNING - Risk of Electric Shock.** Install the controller at least six (6) feet (2 meters) from the inside wall of the pool and/or spa/hot tub using non-metallic plumbing. Canadian installations must be a minimum of three (3) meters from the water.
- **WARNING - Risk of Electric Shock.** Disconnect all AC power during installation and servicing of attached equipment.
- **WARNING - Risk of Electric Shock.** Before removing the high voltage cover panel from the enclosure switch off the main power circuit breaker that supplies power to the controller box.
- **WARNING - Risk of Electric Shock.** Improper installation and/or operation can create an electrical hazard which can cause serious injury, property damage, or death.
- **WARNING - Risk of Electric Shock.** A ground-fault circuit-interrupter must be provided if this device is used to control underwater lighting fixtures. Please refer to the governing local electrical codes.
- **WARNING - To reduce the risk of injury,** please ensure that you use this control system to control only pool/spa heaters that have a built-in operating and high limit control to limit the water temperature for pools and spas. This device should not be relied upon as a safety limit control for heating the pool or spa
- **WARNING - To reduce the risk of injury,** do not use The Attendant to control fire pits or any fire related equipment.
- **WARNING - Risk of Accidental Drowning.** Do not use The Attendant to control an automatic pool cover.

- **WARNING - Hazardous Pressure.** Stand clear of the pump and filter during start up. Equipment is pressurized and may cause injury or death in the event of an equipment failure.
- **WARNING** - Failure to follow warning notices and safety instructions may result in property damage, personal injury, or death.
- Unless otherwise noted in the manual, use copper conductors for all connections.
- Before installation, read and ensure you are able to comply with all warnings, notices and safety instructions in this manual.

## Suction Entrapment Hazard

- The suction in suction outlets (including damaged, broken, missing, or unsecured outlets) can cause severe injury and possibly death due to the following hazards:
  - Hair can become entangled in a suction outlet cover
  - Inserting limbs into an open suction outlet sump or cover can result in mechanical binding or swelling of the limb that was inserted.
  - Jewelry, swimsuit, hair accessories, fingers or toes can be caught in an open suction outlet cover resulting in a mechanical entrapment
  - Negative pressure applied to a large portion of the body or limbs can result in an entrapment.
  - Suction applied directly to the intestines through an unprotected suction outlet can cause evisceration/disembowelment.
- To reduce the risk of Suction Entrapment Hazards:
  - When suction outlets are small enough to be blocked by a person, ensure that a minimum of two outlets per pump are installed and that valves are configured to ensure suction from both.
  - Suction outlets on the same surface connected must be at least 3' (1 metre) apart.
  - Dual suction (or main drains) fittings shall be installed in locations that avoid dual blockage by a single person.
  - Dual suction (or main drains) fittings shall not be located on seating areas or on the backrest of a seating area.
  - Do not use a pool or spa if the suction outlets are missing components or damaged in any way.
  - Ensure suction outlets are installed in accordance with the latest ASME, ASPA standards and CPSC guidelines and that all applicable national, state and local codes are followed.
- Failure to remove any suction outlet plugs used for winterizing or testing the pool or spa can increase the likelihood of a suction entrapment listed above.
- Keep all suction outlets and their components clear of debris (leaves, hair, dirt, etc.) as this can increase the likelihood of a suction entrapment listed above.
- Suction outlets should be inspected regularly to ensure they are not damaged or missing any components and replaced if they are found to be defective or older than 10 years.

## **Hazardous Pressure Hazard**

- Pool and spa fluid systems operate under hazardous pressure during start up, normal operation and after pump shut down. Stand clear of pumps and filters during start up.
- Failure to follow safety and operation instructions may result in violent separation of the pump housing, pump cover, filter housing or clamps due to system pressure, which may cause property damage, severe injury or death.
- Before servicing pool and spa equipment, ensure all system and pump controls are in the off position.
- Before starting the system pump, ensure that all valves are in a position such that water flows back to the pool or spa.
- Do not change filter control valve position during normal operation, shut the pumps off first.

## Appendix A - Connection Table

Connection	Equipment	Description
VALVE1		
VALVE2		
VALVE3		
RELAY1		
RELAY2		
BUS1		
BUS2		
SW1		
SW2		
TS1		
TS2		
H1		
H2		