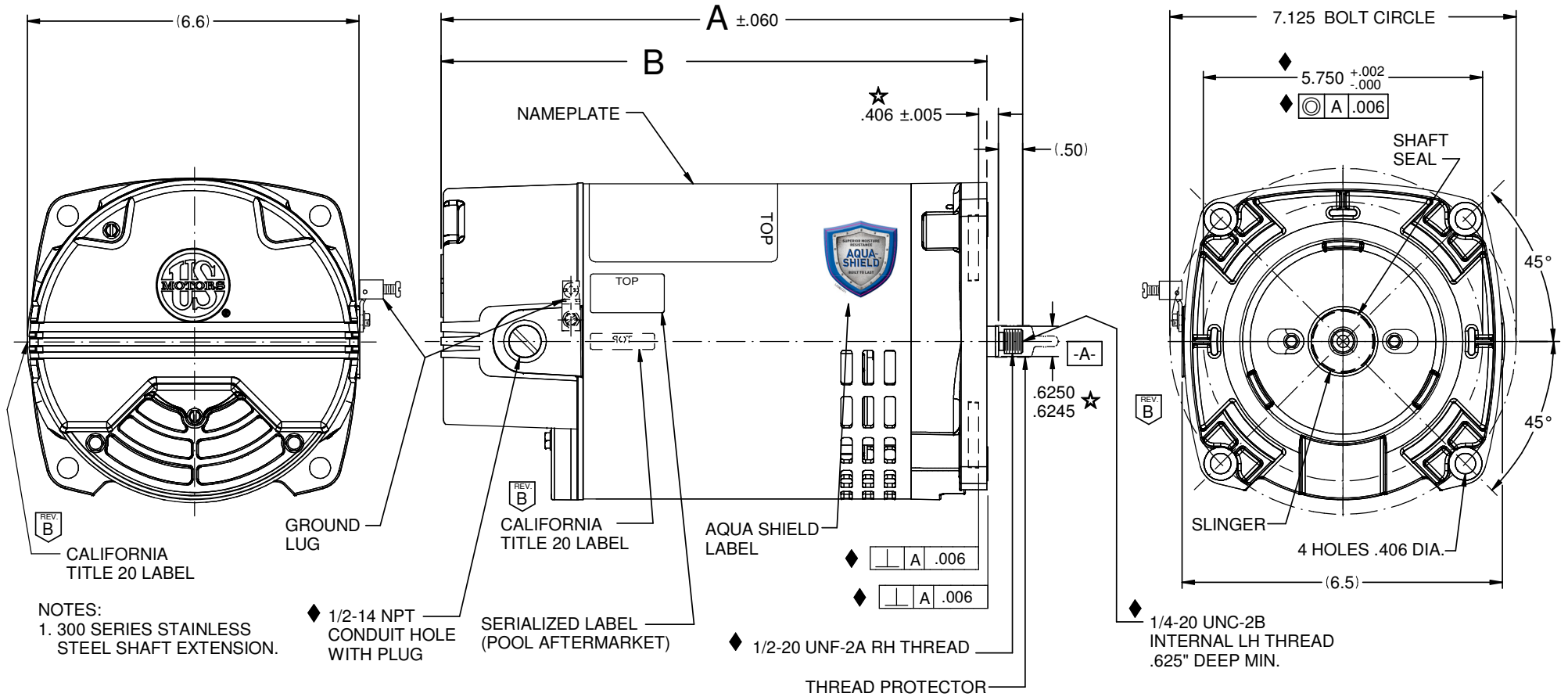


VAR	MODEL	CUSTOMER	CAT. NO.	A	B	XN	THP	VOLTS	AMPS	HZ	RPM	PREM. EFF. LABEL	CALIFORNIA TITLE 20 LABEL	DESCRIPTION / REMARKS
001	K63JXDFL-5150	POOL AFTERMARKET	ASB846	12.71	12.00	N/A	0.98	230/115	5.4/10.8	60	3450	NO	COMPLIANT	
002	K63CXDFM-5151	POOL AFTERMARKET	ASB847	13.21	12.49	N/A	1.25	230/115	7.0/14.0	60	3450	NO	NON-COMPLIANT	
003	K63CXDFN-5152	POOL AFTERMARKET	ASB848	13.46	12.74	N/A	1.65	230/115	7.7/15.4	60	3450	NO	NON-COMPLIANT	
004	K63CXDFP-5153	POOL AFTERMARKET	ASB858	14.46	13.74	N/A	2.25	230/115	10.8/21.6	60	3450	NO	NON-COMPLIANT	
													REV B	



NIDEC MOTOR CORPORATION 10-Oct-18

ROTATION: CW LEAD END

REFER TO S.E.I.M. 24-1

REVISION RECORD FOR: E32399		TOLERANCES ON DIMENSIONS (UNLESS OTHERWISE SPECIFIED)		NIDEC MOTOR CORPORATION			REVISION DATE: 10-OCT-18		
SCREW VIEW WAS UPDATED		INCHES .XX = ± .010		INFORMATION DISCLOSED ON THIS DOCUMENT IS CONSIDERED PROPRIETARY AND SHALL NOT BE REPRODUCED OR DISCLOSED WITHOUT WRITTEN CONSENT OF NIDEC MOTOR CORPORATION			TITLE		
CALIFORNIA TITLE 20 LABEL ADDED.		mm .XXX = ± .005		CUSTOMER DETAIL DRAWING			CODE		
COMPLIANT COLUMN ADDED.		ANGLES X° = ±1°		V02			ITEM NO.		
ISSUED BY: G. TREVIÑO		ENGINEER APPROVED: J. SALINAS		806062			REV		
				1 OF 4			SHEET NUMBER		
				B			DWG SIZE		
				B			SOLIDEDGE		