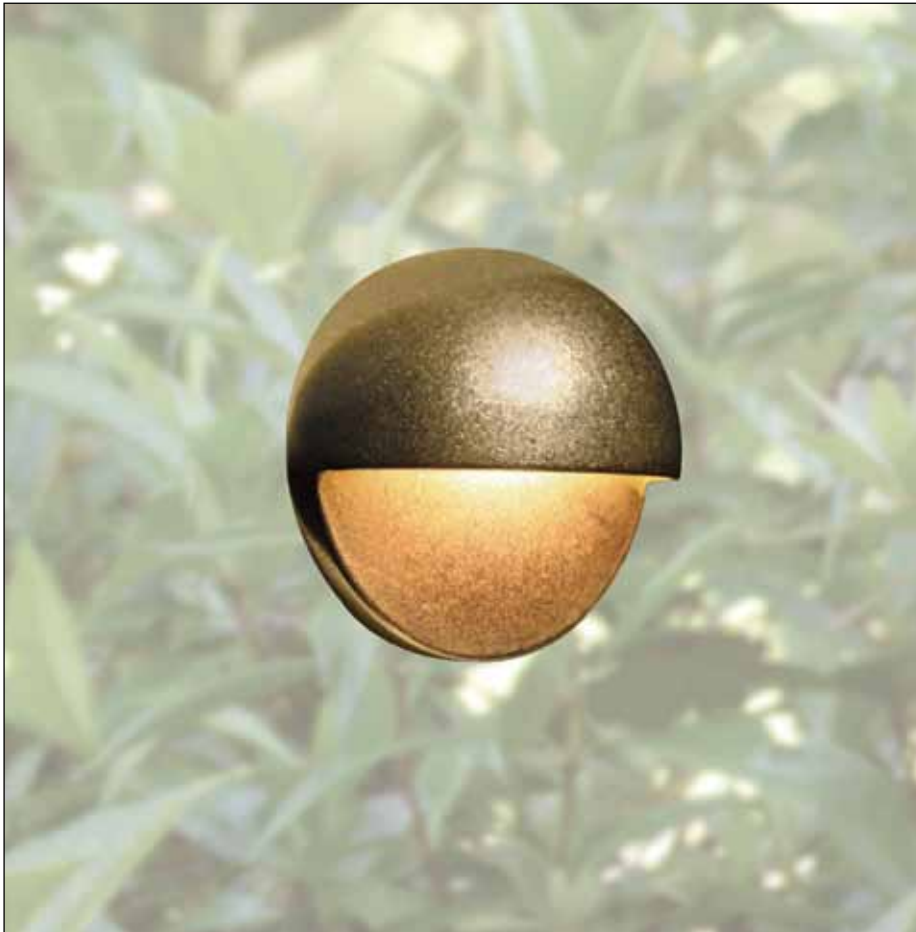


FX | LUMINAIRE®  
MM-10

WALL  
LIGHTING



MOLLUSCOMURO® | FX LUMINAIRE®

RUGGED, SMALL, AND  
A CINCH TO INSTALL

When an integral mount is not practical specify the surface mounted MolluscoMuro®. To mount, the installer simply drills a 1/4" wire-way hole through the post or wall to connect fixture to mainline. Then with the provided screws, they attach the MM to the surface.

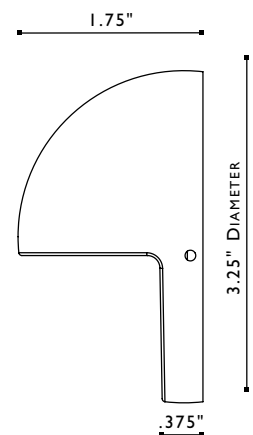
The patent pending MM fully exploits the micro scale of current 12v halogen lamp technology. The internal parabolic reflector maximizes lighting efficiency. Tempered glass diffuser optics softens the beam spread transition. The MM's narrow profile and wide range of powdercoat options allow it to blend into any surrounding.



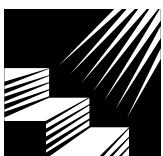
REMODEL WITH EASE

The MM is a great choice for remodel projects where integral sleeving of wall lites is not feasible. A single 1/4" hole out the back (easy to waterseal) ties the MM to the 12 gauge mainline.

A great application for the MolluscoMuro® is to mount it to a deck railing post over a color pot. This brings the nighttime deck garden to life by accenting the color and throwing shadows on the deck surface.



STAIRWAY  
LIGHTING



PERIMETER  
LIGHTING



# MOLLUSCOMURO® – ORDERING INFORMATION

The MM comes standard with a 10 watt Xenon G4 lamp and any finish.

## STANDARD PARTS:



## ORDERING SAMPLE:

SECTIONS:	DESCRIPTION:	WHAT TO ORDER:
1 + 2 + 3	+  +	= MM-10-BZ

## STANDARD OPTIONS:

1 + 2 + 3 ORDERED TOGETHER ON SAME LINE

## AVAILABLE LAMP CONFIGURATIONS:

Your choice of one lamp will come pre-installed.

FIXTURE/CODE	WATTAGE/CODE	AVG. LIFE HOUR
<b>1</b> <b>MM</b>	<b>2 XENON LAMP OPTIONS:</b>	
	<b>10</b>	10,000
	<b>HALOGEN (H) LAMP OPTIONS:</b>	
	<b>10H</b>	2000

## FINISH OPTIONS:

Choose from the following options. All have regular lead times.

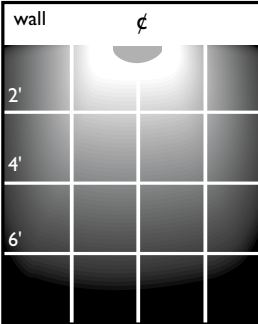
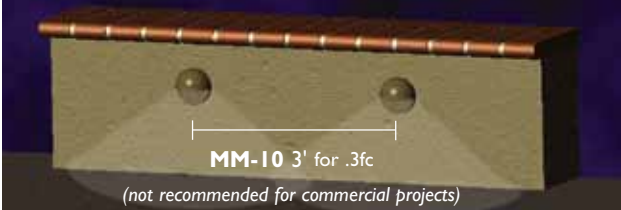
CODE	DESCRIPTION
<b>3</b>	<b>BZ</b> Bronze Metallic
	<b>DG</b> Desert Granite
	<b>BF</b> Black Wrinkle
	<b>VF</b> Verde Speckle
	<b>SB</b> Sedona Brown
	<b>WF</b> White Wrinkle
	<b>WI</b> Weathered Iron

## ADDITIONAL FINISH OPTION:

CODE	DESCRIPTION
<b>BS</b>	Brass <i>(will naturally patina)</i>
<b>NP</b>	Nickel Plate

## PHOTOMETRICS:

Spacing for minimum footcandle illumination on level ground.  
*.3fc for residential projects*



## Footcandle Power

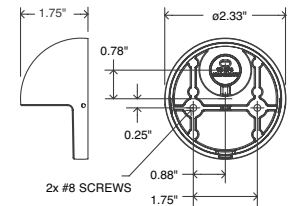
Distance from Center	MM-10
1'	1.7
2'	.4
3'	.10

For conversion to lumens: Multiply footcandles x 10. See FX glossary for a full description of fc and lumens.

## WALL MOUNT INSTALL DETAIL:

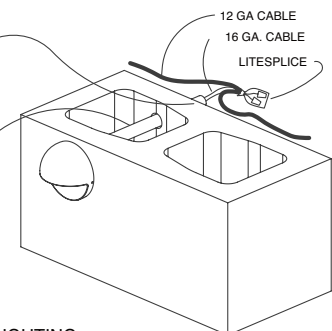
INSTALL FX LUMINAIRE MOLLUSCO MURO AS SHOWN USING 16 GAUGE CABLE AND PROVIDED WIRE NUTS.

10 WATT MAXIMUM LAMP



WATERPROOF SLEEVE END TO PREVENT WATER FROM SEEPING THROUGH THE WALL AND INTO THE LAMP HOUSING.

BLUE OR GRAY ENT CONDUIT WITH STRANDED THHN WIRE SIZED TO MATCH WATTAGE LOAD.



THIS FIXTURE IS DESIGNED FOR DOWN LIGHTING ONLY. DO NOT USE IN UP LIGHT POSITION