

DURO-BEAM *aquaBoard*™:



lighted waterfall shown

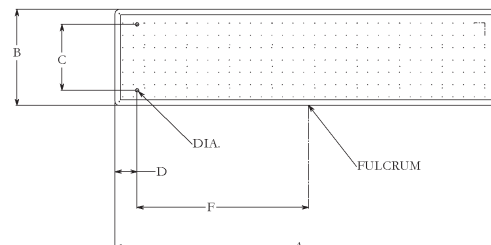
Part # DB6
Part # DB8
Part # DB10

Duro-Beam Features:

- Dual Beam Laminated Core
- Durable Non-Fading, Skid Resistant Acrylic Surface
- Fiberglass Reinforced for Superior Strength
- Ready for Use with Tip End Board Fall Waterfalls
 - 7.5–15 GPM (Actual GPM rating will vary depending on specific pool size and pool equipment used.)
- Weight Limit = 250 lbs.
- See Available Board Colors on Pg. 2

Board Thickness: 1.5"

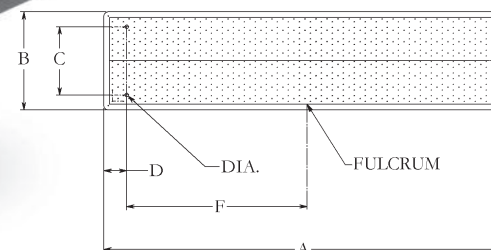
Optional Waterfalls:
Board Fall (basic);
Board Fall-L (LED)



Model #	Nominal Length	Pool Type	Use with Base Type	Colors
DB6	6'	I-V	La Mesa/Los Arcos, U-Stands	White, Blue, Black, Tan, Gray
DB8	8'	II-V	La Mesa/Los Arcos, U-Stands	White, Blue, Black, Tan, Gray
DB10	10'	III-V	La Mesa, U-Stands	White, Blue, Black, Tan, Gray

Model #	Nominal Length	A	B	C	D	F	DIA.
DB6	6'	70.25"	17.25"	12.00"	4.00"	30.00"	19/32"
DB8	8'	94.00"	17.25"	12.00"	4.00"	40.00"	19/32"
DB10	10'	117.50"	17.25"	12.00"	4.00"	52.00"	19/32"

TECHNI-BEAM BOARD:



Part # TB6
Part # TB8
Part # TB10
Part # TB12

Techni-Beam Features:

- 14" Wide Solid Laminated Core
- Durable Non-Fading, Skid Resistant Acrylic Surface
- Fiberglass Reinforced for Superior Strength
- Weight Limit = 250 lbs.
- See Available Board Colors on Pg. 2

Board Thickness: 1.5"

Model #	Nominal Length	Pool Type	Use with Base Type	Colors
TB6	6'	I-V	La Mesa/Los Arcos, Techni-Spring, U-Stands	White, Blue, Black, Tan, Gray
TB8	8'	II-V	La Mesa/Los Arcos, U-Stands	White, Blue, Black, Tan, Gray
TB8	8'	III-V	Techni-Spring	White, Blue, Black, Tan, Gray
TB10	10'	III-V	La Mesa, U-Stands	White, Blue, Black, Tan, Gray
TB12	12'	V	U-Stands, Stands by other manufacturers	White, Blue

Model #	Nominal Length	A	B	C	D	F	DIA.
TB6	6'	70.25"	17.25"	12.00"	4.00"	30.00"	19/32"
TB8	8'	94.00"	17.25"	12.00"	4.00"	40.00"	19/32"
TB10	10'	117.50"	17.25"	12.00"	4.00"	52.00"	19/32"
TB12	12'	142.00"	17.25"	12.00"	4.00"	62.00"	19/32"