

PRODUCT INFORMATION PACKET



Model No:
Catalog No: SQS1102R
1 HP 3450/1725 230 ODP 48Y THD SHAFT 2SP
Induction Motors



Regal and Century are trademarks of Regal Beloit Corporation or one of its affiliated companies.
©2019 Regal Beloit Corporation, All Rights Reserved. MC017097E





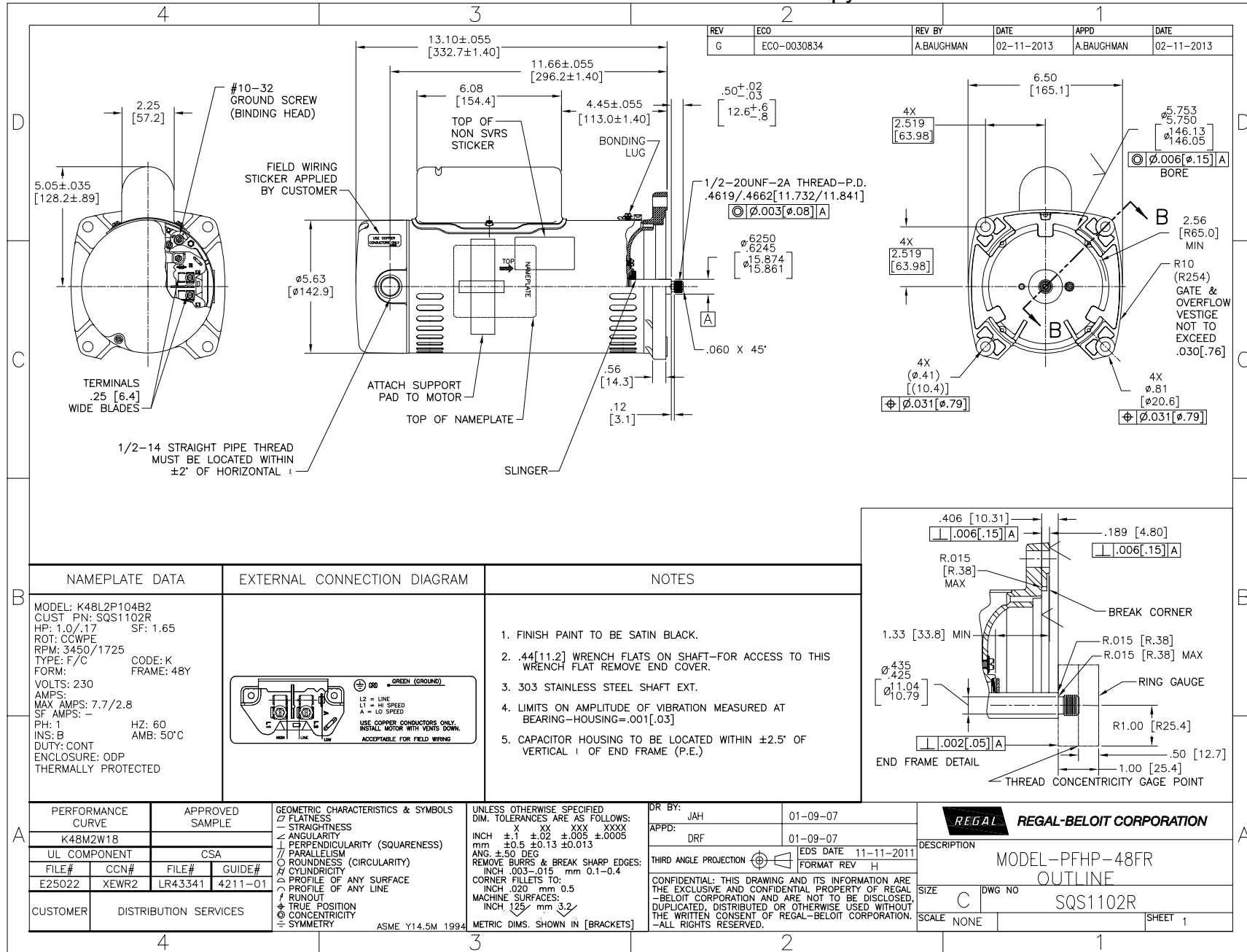
Nameplate Specifications

Output HP	1.0/1.17 HP	Output KW	0.75 kW
Frequency	60 Hz	Voltage	230 V
Current	7.7/2.8 A	Speed	3450/1725 RPM
Service Factor	1.65	Phase	1
Duty	Continuous	Insulation Class	B
Frame	48Y	Enclosure	Open Drip Proof
Overload Protector	Automatic	Ambient Temperature	50 °C
UL	Recognized	CSA	Y

Technical Specifications

Electrical Type	Psc Low Speed, Cap Start High Speed	Poles	2
Rotation	Counterclockwise Pump End	Mounting	Square Flange
Motor Orientation	Horizontal	Drive End Bearing	BALL
Opp Drive End Bearing	BALL	Frame Material	Rolled Steel
Shaft Type	Threaded	Overall Length	13.82 in
Frame Length	9.94 in	Shaft Diameter	0.625 in
Shaft Extension	0.906 in		
Outline Drawing	SQS1102R-S01	Connection Diagram	627103-003

This is an uncontrolled document once printed or downloaded and is subject to change without notice. Date Created: 10/03/2019

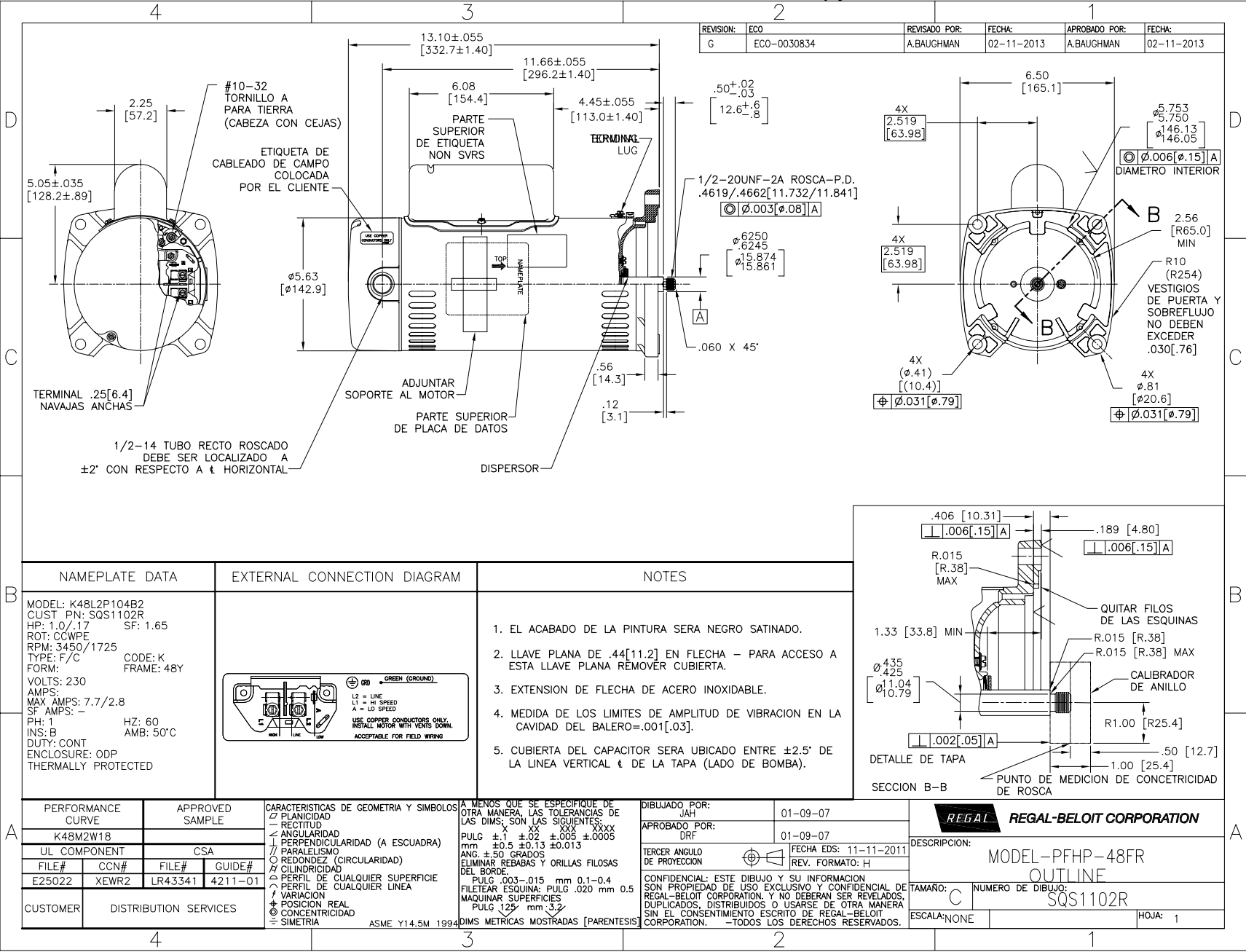


NAMEPLATE DATA	EXTERNAL CONNECTION DIAGRAM	NOTES
<p>MODEL: K48L2P104B2 CUST PN: SQS1102R HP: 1.0/1.7 SF: 1.65 ROT: CCWPE RPM: 3450/1725 TYPE: F/C FORM: VOLTS: 230 AMPS: MAX AMPS: 7.7/2.8 SF AMPS: - PH: 1 HZ: 60 INS: B AMB: 50°C DUTY: CONT ENCLOSURE: ODP THERMALLY PROTECTED</p>		<p>1. FINISH PAINT TO BE SATIN BLACK. 2. .44 [11.2] WRENCH FLATS ON SHAFT-FOR ACCESS TO THIS WRENCH FLAT REMOVE END COVER. 3. 303 STAINLESS STEEL SHAFT EXT. 4. LIMITS ON AMPLITUDE OF VIBRATION MEASURED AT BEARING-HOUSING=.001 [.03] 5. CAPACITOR HOUSING TO BE LOCATED WITHIN ±2.5' OF VERTICAL I OF END FRAME (P.E.)</p>

PERFORMANCE CURVE	APPROVED SAMPLE	GEOMETRIC CHARACTERISTICS & SYMBOLS
K48M2W18	CSA	□ FLATNESS - STRAIGHTNESS ∠ ANGULARITY ⊥ PERPENDICULARITY (SQUARENESS) // PARALLELISM ○ ROUNDNESS (CIRCULARITY) ⌀ CYLINDRICITY ∩ PROFILE OF ANY SURFACE ∪ PROFILE OF ANY LINE # RUNOUT ⊕ TRUE POSITION ⊙ CONCENTRICITY ∓ SYMMETRY

UNLESS OTHERWISE SPECIFIED DIM. TOLERANCES ARE AS FOLLOWS:	DR BY:
INCH X XX XXX XXXX ±.1 ±.02 ±.005 ±.0005 mm ±0.5 ±0.13 ±0.013 ANG. ±.50 DEG REMOVE BURRS & BREAK SHARP EDGES: INCH .003-.015 mm 0.1-0.4 CORNER FILLETS TO: INCH .020 mm 0.5 MACHINE SURFACES: INCH 125 mm 3.2	JAH
	01-09-07
	APPD: DRF
	01-09-07
	EDS DATE 11-11-2011
	FORMAT REV H
	THIRD ANGLE PROJECTION
	CONFIDENTIAL: THIS DRAWING AND ITS INFORMATION ARE THE EXCLUSIVE AND CONFIDENTIAL PROPERTY OF REGAL-BELOIT CORPORATION AND ARE NOT TO BE DISCLOSED, DUPLICATED, DISTRIBUTED OR OTHERWISE USED WITHOUT THE WRITTEN CONSENT OF REGAL-BELOIT CORPORATION. -ALL RIGHTS RESERVED.

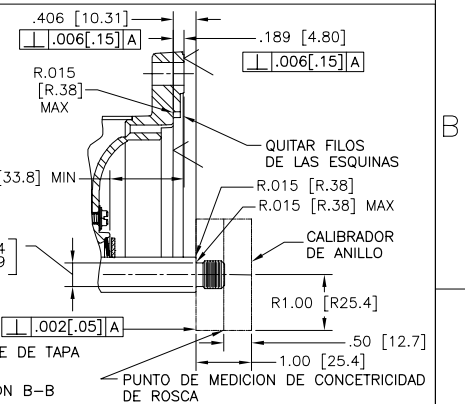
REGAL-BELOIT CORPORATION		DESCRIPTION
MODEL-PFHP-48FR OUTLINE		
SIZE C	DWG NO SQS1102R	
SCALE NONE		SHEET 1



REVISION: ECO	REVISADO POR: A.BAUGHMAN	FECHA: 02-11-2013	APROBADO POR: A.BAUGHMAN	FECHA: 02-11-2013
G	ECO-0030834			

NAMEPLATE DATA	EXTERNAL CONNECTION DIAGRAM	NOTES
MODEL: K48L2P104B2 CUST PN: SQS1102R HP: 1.0/1.7 SF: 1.65 ROT: CCWPE RPM: 3450/1725 TYPE: F/C FORM: VOLTS: 230 AMPS: MAX AMPS: 7.7/2.8 SF AMPS: - PH: 1 INS: B DUTY: CONT ENCLOSURE: ODP THERMALLY PROTECTED	<p> L2 = LINE L1 = HI SPEED A = LO SPEED USE COPPER CONDUCTORS ONLY. INSTALL MOTOR WITH YETES DOWN. ACCEPTABLE FOR FIELD WIRING </p>	<ol style="list-style-type: none"> EL ACABADO DE LA PINTURA SERA NEGRO SATINADO. LLAVE PLANA DE .44[11.2] EN FLECHA - PARA ACCESO A ESTA LLAVE PLANA REMOVER CUBIERTA. EXTENSION DE FLECHA DE ACERO INOXIDABLE. MEDIDA DE LOS LIMITES DE AMPLITUD DE VIBRACION EN LA CAVIDAD DEL BALERO=.001[.03]. CUBIERTA DEL CAPACITOR SERA UBICADO ENTRE ±2.5' DE LA LINEA VERTICAL & DE LA TAPA (LADO DE BOMBA).

PERFORMANCE CURVE	APPROVED SAMPLE	CARACTERISTICAS DE GEOMETRIA Y SIMBOLOS	A MENOS QUE SE ESPECIFIQUE DE OTRA MANERA, LAS TOLERANCIAS DE LAS DIMS: SON LAS SIGUIENTES:	DIBUJADO POR: JAH	01-09-07
K48M2W18		PLANICIDAD RECTITUD ANGULARIDAD PERPENDICULARIDAD (A ESCUADRA) PARALELISMO REDONDEZ (CIRCULARIDAD) CILINDRICIDAD PERFIL DE CUALQUIER SUPERFICIE PERFIL DE CUALQUIER LINEA VARIACION POSICION REAL CONCENTRICIDAD SIMETRIA	PULG ±.1 ±.02 ±.005 ±.0005 mm ±0.5 ±0.13 ±0.013 ANG ±50 GRADOS ELIMINAR REBASAS Y ORILLAS FILOSAS DEL BORDE. PULG .003-.015 mm 0.1-0.4 FILETEAR ESQUINA: PULG .020 mm 0.5 MAQUINAR SUPERFICIES PULG 125 mm 3.2	APROBADO POR: DRF	01-09-07
UL COMPONENT	CSA			TERCER ANGULO DE PROYECCION	FECHA EDS: 11-11-2011 REV. FORMATO: H
FILE# CCN# FILE# GUIDE#					
E25022 XEWR2 LR43341 4211-01					
CUSTOMER	DISTRIBUTION SERVICES				



REGAL-BELOIT CORPORATION	
DESCRIPCION:	MODEL-PFHP-48FR OUTLINE
TAMAÑO:	C
NUMERO DE DIBUJO:	SQS1102R
ESCALA: NONE	HOJA: 1