

32" CHANNEL DRAIN ANTI-ENTRAPMENT SUCTION OUTLET COVER AND PVC THREE-PORT MANUFACTURED SUMP



VGBA CERTIFIED SPECIFICATIONS

Open Area
22.6 in²

For SOFA Specific Flow Ratings and specifications please scan QR code or visit www.aquastarpoolproducts.com/flowcode



FEATURES

Certified, Listed, and Labeled in conformance with APSP/ANSI/ICC-16 2017 and NSF/ANSI/CAN 50 standards

Three ports: bottom 2½" OD, 2" ID S/S; inside 2" threaded FPT; two 2" threaded plugs included

Strong PVC sump does not require transitional glue

Designed for use with 2" hydrostatic relief valve part #HVxxx (see page 42)

Disposable plastic pre-gunite/plaster insert keeps debris out and retains sump shape during construction

#316 stainless steel screws

Manufactured from superior UV-resistant engineered polymers

Online product support including downloadable CAD files, General Certificate of Conformity, third-party certificate, installation instructions and more

Replace drain cover every five years from the date of installation

4 per case

NOTICE: White assemblies will come with a white PVC sump, all other colors are shipped with a medium gray sump

U.S. Patent www.aquastarpoolproducts.com/patents

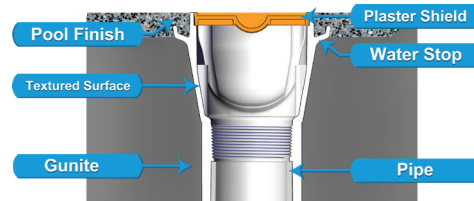
Unblockable!



NEW

Optional 2" hydrostatic relief valve available p/n HVK101

Water Stop and Textured Sump



With sump (concrete pools)
Part # 32CDAVxxx

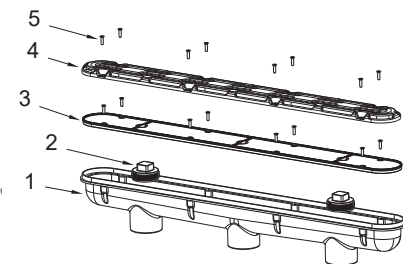
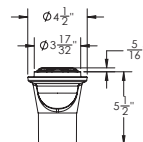
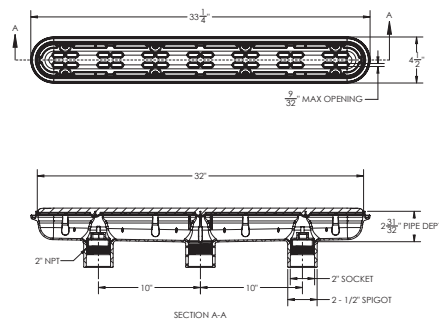
STANDARD COLORS

- 32CDAV101 – White
- 32CDAV103 – Light Gray
- 32CDAV105 – Dark Gray

Also available sump and screws only, p/n 32CDPKxxx
4 per case

Also available cover and screws only, without sump/frame
p/n 32CDAVNFKxxx
40 per case

VGBA 2017 Compliant



1. 32" PVC 3-Port Sump
2. 2" NPT Plug, Qty 2
3. 32" Channel Drain, Plaster Shield
4. #10 X 3/4" LG. Flat Head Phillips, Type A Screw, 316 SS, Qty 16
5. 32" Anti-Entrapment Suction Outlet Cover

P 877-768-2717 F 877-276-POOL Outside the US: P +1-949-336-1940 F +1-949-336-1940
info@aquastarpoolproducts.com www.aquastarpoolproducts.com CS013-011724