

# PRODUCT INFORMATION PACKET



Model No:  
Catalog No: B2982  
MODEL-PFHP-56FR  
Induction Motors



Regal and Century are trademarks of Regal Beloit Corporation or one of its affiliated companies.  
©2019 Regal Beloit Corporation, All Rights Reserved. MC017097E





**Nameplate Specifications**

Output HP	<b>1.0/ .12 HP</b>	Output KW	<b>0.75 kW</b>
Frequency	<b>60 Hz</b>	Voltage	<b>230 V</b>
Current	<b>SF 7.4/1.4 A</b>	Speed	<b>3450/1725 RPM</b>
Service Factor	<b>1.65</b>	Phase	<b>1</b>
Duty	<b>Continuous</b>	Insulation Class	<b>F</b>
Frame	<b>Y56Y</b>	Enclosure	<b>Open Drip Proof</b>
Overload Protector	<b>Thermally Protected</b>	Ambient Temperature	<b>50 °C</b>
UL	<b>Recognized</b>	CSA	<b>Y</b>

**Technical Specifications**

Electrical Type	<b>Psc Low Speed, Cap Start/Cap Run High Speed</b>	Poles	<b>2/4</b>
Rotation	<b>Counterclockwise Pump End</b>	Mounting	<b>Square Flange</b>
Motor Orientation	<b>Horizontal</b>	Drive End Bearing	<b>BALL</b>
Opp Drive End Bearing	<b>BALL</b>	Frame Material	<b>Rolled Steel</b>
Shaft Type	<b>Threaded</b>	Overall Length	<b>13.40 in</b>
Frame Length	<b>9.00 in</b>	Shaft Diameter	<b>0.625 in</b>
Shaft Extension	<b>0.91 in</b>		
Outline Drawing	<b>B2982-S01</b>	Connection Diagram	<b>D0000026-001</b>

**This is an uncontrolled document once printed or downloaded and is subject to change without notice. Date Created: 10/02/2019**

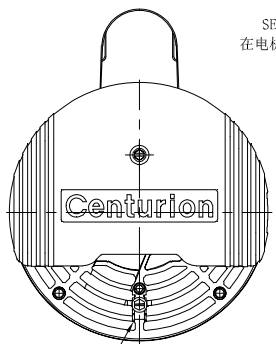
版本	ECO	编制	日期	批准	日期
L	0030713	A.NAJERA	02-05-2013	J. DE LUNA	02-05-2013

D

C

D

C



NON SVRS标贴  
顶部在电机背面  
标贴的上方

SERIAL标贴顶部  
在电机背面9点位置

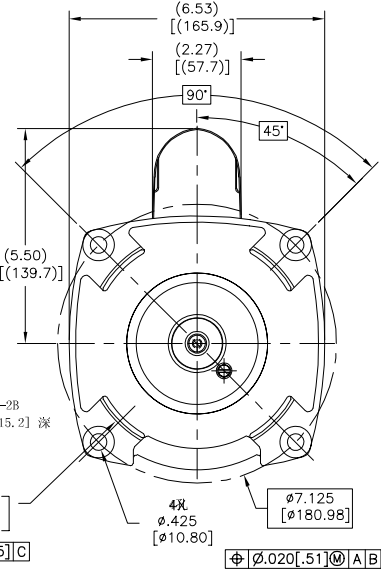
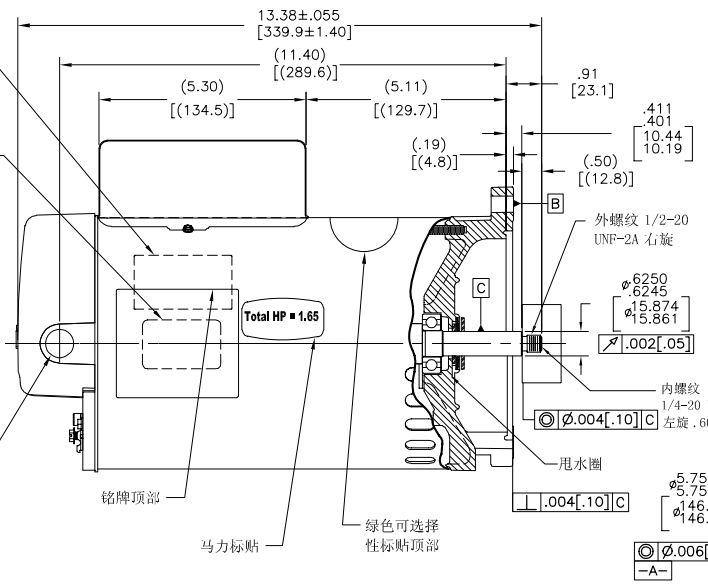
接线片

1/2-14 N.P.S.M.  
带塞子

铭牌顶部

马力标贴

绿色可选择  
性标贴顶部



B

B

NAMEPLATE DATA	EXTERNAL CONNECTION DIAGRAM	NOTES
MODEL: 196443 CUST. PN: B2982 HP: 1.0/1.2 SF: 1.65 ROT: CW/PE RPM: 3450/1725 TYPE: CXCP CODE: K FORM: KJM FRAME: Y56Y VOLTS: 230 AMPS: MAX. AMPS: SF. AMPS: 7.4/1.4 PH: 1 HZ: 60 INS: F AMB: 50°C DUTY: CONT ENCLOSURE: ODP THERMALLY PROTECTED	<p>USE COPPER CONDUCTORS ONLY. INSTALL MOTOR WITH VENTS DOWN. ACCEPTABLE FOR FIELD WIRING.</p>	1. 量规测量方法如图所示，螺纹外径与中心的同心度为.004[.10] 2. 轴向窜动不超过.010[.25] 3. 括号内尺寸为参考尺寸。 4. 表面为黑色喷漆。 6. 1.65 SF HP

A

A

PERFORMANCE CURVE	APPROVED SAMPLE	形位公差 □ 平面度 — 直线度 ∠ 垂直度 ⊥ 平行度 ○ 圆度 ⊘ 圆跳动 ⊙ 轮廓圆度 ⊖ 轮廓圆度 ⊕ 对称度 ⊖ 对称度	除图： 批准： 第三角投影 图底格式发布日期 11-11-2011 图底格式版本 H 机密：本图纸及相关信息所有权归REGAL-BELOIT CORPORATION。未经REGAL-BELOIT CORPORATION书面授权，不得泄露、复制、传播或作其他用途。一版权所有。	名称 MODEL-PFHP-56FR OUTLINE 图号 B2982 比例 NONE 页号 1
0116753	0701615	ASME Y14.5M 1994	K.GONG 08-08-2008 R.JEVON 08-08-2008 英寸 ±.1 XX ±.02 ±.005 ±.0005 毫米 ±0.5 ±0.13 ±0.013 角度 ±.50 度 圆锥度和尖锥 英寸 .003-.015 毫米 0.1-0.4 内圆角 英寸 .020 毫米 0.5 表面粗糙度 英寸 125 毫米 3.2	REGAL-BELOIT CORPORATION MODEL-PFHP-56FR OUTLINE B2982 NONE 1

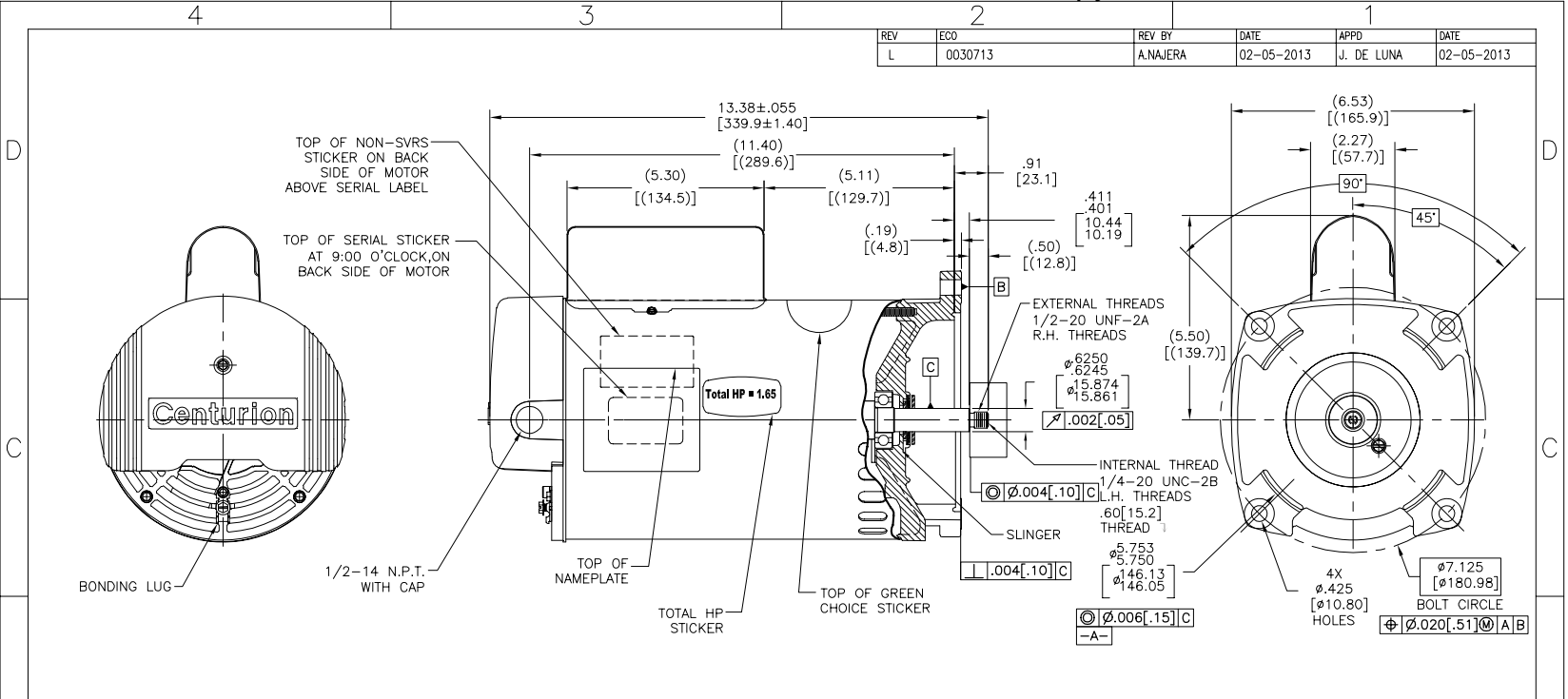
4

3

2

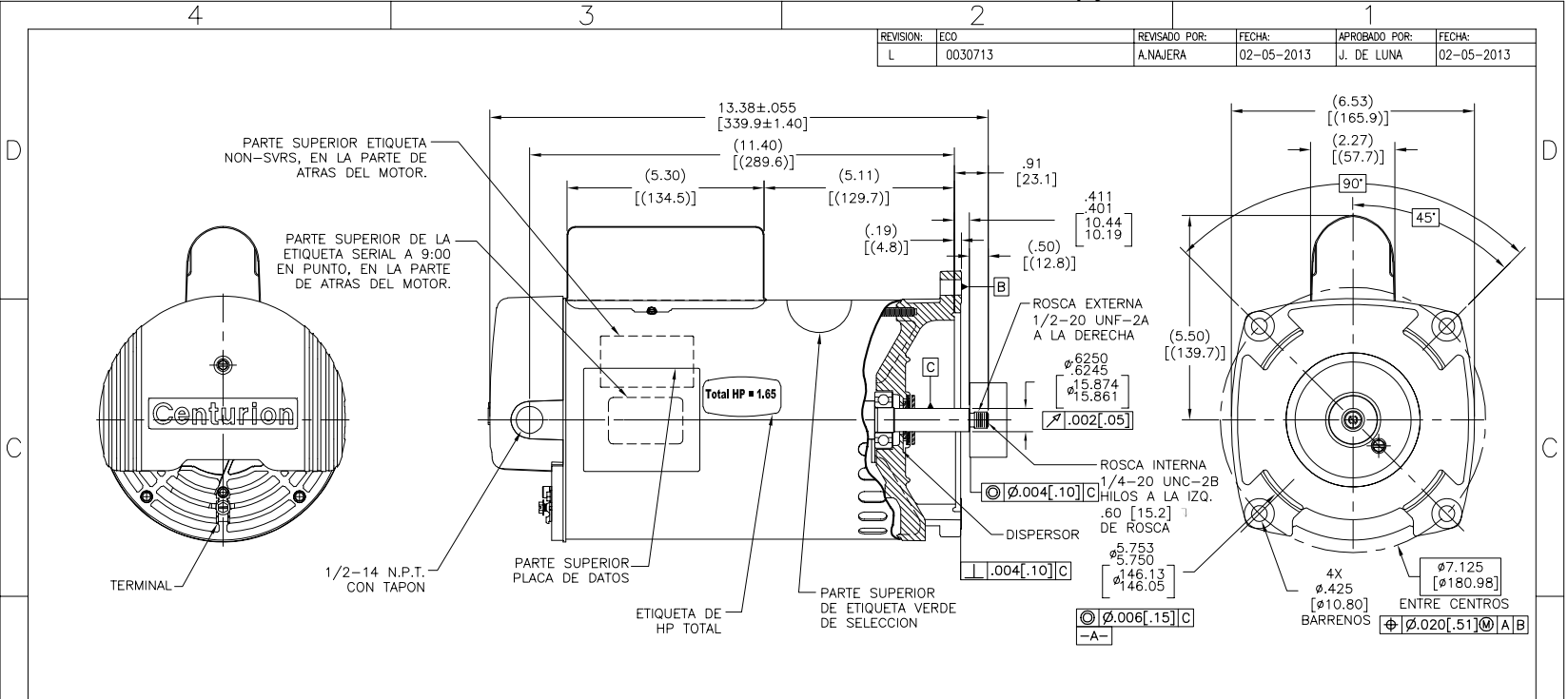
1

REV	ECO	REV BY	DATE	APPD	DATE
L	0030713	A.NAJERA	02-05-2013	J. DE LUNA	02-05-2013



NAMEPLATE DATA	EXTERNAL CONNECTION DIAGRAM	NOTES
MODEL: 196443 CUST. PN: B2982 HP: 1.0/1.2 SF: 1.65 ROT: CW/PE RPM: 3450/1725 TYPE: CXCP CODE: K FORM: KJM FRAME: Y56Y VOLTS: 230 AMPS: MAX. AMPS: SF. AMPS: 7.4/1.4 PH: 1 HZ: 60 INS: F AMB: 50°C DUTY: CONT ENCLOSURE: ODP THERMALLY PROTECTED		<ol style="list-style-type: none"> <li>FOR THREADED SHAFT EXT. ECCENTRICITY OF THREADED PORTION OF SHAFT IS HELD WITHIN .004[.10] TOTAL GAGE READING WITH THE INDICATOR ON O.D. OF GROUND RING GAGE AS SHOWN. THE GAGE BEING STATIONARY WITH RESPECT TO THE ROTOR.</li> <li>END PLAY NOT TO EXCEED .010[.25] MEASURED WITH NO THRUST.</li> <li>ALL DIMENSIONS SHOWN IN PARENTHESIS ARE REFERENCE DIMENSIONS.</li> <li>FINISH PAINT TO BE BLACK.</li> <li>1.65 SF HP</li> </ol>

PERFORMANCE CURVE 0116753	APPROVED SAMPLE 0701615	GEOMETRIC CHARACTERISTICS & SYMBOLS / FLATNESS - STRAIGHTNESS < ANGLE   PERPENDICULARITY (SQUARENESS) // PARALLELISM O ROUNDNESS (CIRCULARITY) R CYLINDRICITY / PROFILE OF ANY SURFACE / PROFILE OF ANY LINE f RUNOUT + TRUE POSITION @ CONCENTRICITY = SYMMETRY ASME Y14.5M 1994	UNLESS OTHERWISE SPECIFIED DIM. TOLERANCES ARE AS FOLLOWS: INCH X XX XXX XXXX mm ±.1 ±.02 ±.005 ±.0005 mm ±0.5 ±0.13 ±0.013 ANG. ±.50 DEG REMOVE BURRS & BREAK SHARP EDGES: INCH .003-.015 mm 0.1-0.4 CORNER FILLETS TO: INCH .020 mm 0.5 MACHINE SURFACES: INCH 125 mm 3.2 METRIC DIMS. SHOWN IN [BRACKETS]	DR BY: K.GONG 08-08-2008 APPD: R.JEVON 08-08-2008 THIRDS ANGLE PROJECTION EDS DATE 11-11-2011 FORMAT REV H CONFIDENTIAL: THIS DRAWING AND ITS INFORMATION ARE THE EXCLUSIVE AND CONFIDENTIAL PROPERTY OF REGAL-BELOIT CORPORATION AND ARE NOT TO BE DISCLOSED, DUPLICATED, DISTRIBUTED OR OTHERWISE USED WITHOUT THE WRITTEN CONSENT OF REGAL-BELOIT CORPORATION. -ALL RIGHTS RESERVED.	
UL COMPONENT FILE# CCN# FILE# GUIDE# E44549 PRG2 LR4642 4211-01	CUSTOMER DISTRIBUTION	DESCRIPTION MODEL-PFHP-56FR OUTLINE	SIZE C DWG NO B2982	SCALE NONE SHEET 1	



NAMEPLATE DATA	EXTERNAL CONNECTION DIAGRAM	NOTES
MODEL: 196443 CUST PN: B2982 HP: 1.0/1.2 SF: 1.65 ROT: CW/PE RPM: 3450/1725 TYPE: CXCP CODE: K FORM: KJM FRAME: Y56Y VOLTS: 230 AMPS: MAX AMPS: SF AMPS: 7.4/1.4 PH: 1 HZ: 60 INS: F AMB: 50°C DUTY: CONT ENCLOSURE: ODP THERMALLY PROTECTED		<ol style="list-style-type: none"> <li>PARA EXT. DE FLECHA ROSCADA LA EXCENTRICIDAD DE LA ROSCA DE LA FLECHA ES SOSTENIDA DENTRO .004[.10] LECTURA TOTAL DEL ESCANTILLON CON EL INDICADOR SOBRE EL DIAM. EXTERNO DEL ANILLO DE TIERRA COMO SE MUESTRA. EL ESCANTILLON SERA ESTACIONARIO CON RESPECTO AL ROTOR.</li> <li>JUEGO AXIAL NO EXCEDERA .010[.25] MEDIDA SIN EMPUJE.</li> <li>TODAS LAS DIMENSIONES MOSTRADAS EN PARENTESIS SON DIMENSIONES DE REFERENCIA</li> <li>EL ACABADO DE LA PINTURA SERA NEGRO.</li> <li>1.65 SF HP</li> </ol>

<table border="1"> <tr> <th>PERFORMANCE CURVE</th> <th>APPROVED SAMPLE</th> </tr> <tr> <td>0116753</td> <td>0701615</td> </tr> </table>	PERFORMANCE CURVE	APPROVED SAMPLE	0116753	0701615	<table border="1"> <tr> <th>UL COMPONENT</th> <th>CSA</th> </tr> <tr> <td>E44549</td> <td>LR4642</td> </tr> </table>	UL COMPONENT	CSA	E44549	LR4642	<table border="1"> <tr> <th>FILE#</th> <th>CCN#</th> <th>FILE#</th> <th>GUIDE#</th> </tr> <tr> <td>E44549</td> <td>PRG2</td> <td>LR4642</td> <td>4211-01</td> </tr> </table>	FILE#	CCN#	FILE#	GUIDE#	E44549	PRG2	LR4642	4211-01	<table border="1"> <tr> <th>CUSTOMER</th> <th>DISTRIBUTION</th> </tr> <tr> <td></td> <td></td> </tr> </table>	CUSTOMER	DISTRIBUTION			CARACTERISTICAS DE GEOMETRIA Y SIMBOLOS ▽ PLANICIDAD - RECTITUD ∠ ANGULARIDAD ⊥ PERPENDICULARIDAD (A ESCUADRA) ∥ PARALELISMO ○ REDONDEZ (CIRCULARIDAD) ∅ CILINDRICIDAD ~ PERFIL DE CUALQUIER SUPERFICIE ~ PERFIL DE CUALQUIER LINEA / VARIACION * POSICION REAL ⊙ CONCENTRICIDAD = SIMETRIA ASME Y14.5M 1994	A MENOS QUE SE ESPECIFIQUE DE OTRA MANERA, LAS TOLERANCIAS DE LAS DIMS. SON LAS SIGUIENTES: PULG ±.1 ±.02 ±.005 ±.0005 mm ±0.5 ±0.13 ±0.013 ANG. ±.50 GRADOS ELIMINAR REBASAS Y ORILLAS FILOSAS DEL BORDE PULG .003-.015 mm 0.1-0.4 FILETEAR ESQUINA: PULG .020 mm 0.5 MAQUINAR SUPERFICIES PULG 12 <sup>o</sup> mm 3.2 <sup>o</sup> DIMS. METRICAS MOSTRADAS [PARENTESIS]	DIBUJADO POR: K.GONG APROBADO POR: R.JEVON 08-08-2008 08-08-2008 TERCER ANGULO DE PROYECCION FECHA EDS: 11-11-2011 REV. FORMATO: H	REGAL REGAL-BELOIT CORPORATION DESCRIPCION: MODEL-PFHP-56FR OUTLINE TAMAÑO: C NUMERO DE DIBUJO: B2982 ESCALA: NONE HOJA: 1
PERFORMANCE CURVE	APPROVED SAMPLE																										
0116753	0701615																										
UL COMPONENT	CSA																										
E44549	LR4642																										
FILE#	CCN#	FILE#	GUIDE#																								
E44549	PRG2	LR4642	4211-01																								
CUSTOMER	DISTRIBUTION																										