

12" x 12" Square "Wave" Anti-Entrapment Suction Outlet Cover and Frame

VGB Series

Product Specification Sheet

The AquaStar line of suction outlet covers, compliant with the new Virginia Graeme-Baker Pool and Spa Safety Act (ASME/ANSI A112.19.8a-2008)

Features

For single or multiple drain use
(see installation instructions)

Requires a minimum 3" sump depth

Single

Floor: 361 GPM at 1.3 fps

Wall: 361 GPM at 1.3 fps

85.2 square inch opening

Trademarked VGB compliance button easily identifies VGB 2008 compliant cover from on deck and underwater

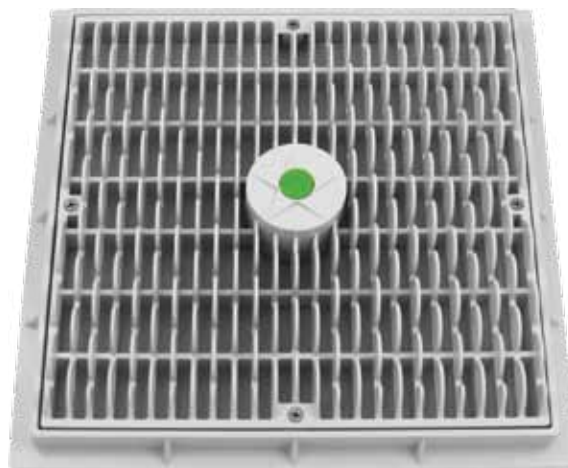
#316 stainless steel screws

Manufactured from superior UV-resistant engineered polymers

Easily and safely retrofits most brands' existing 12" frames* (see chart on pages 164-166 and installation instructions for details and special requirements)

All components (cover, frame, screws) meet or exceed NSF 50/ASME/ANSI A112.19.8a-2008 national standards and ASTM G154 UV testing exposure 12 per case

Specially designed and engineered for ALL 1.0 and 1.5 fps states – great for gravity drain systems as well as direct suction.



Part # WAV12xxx

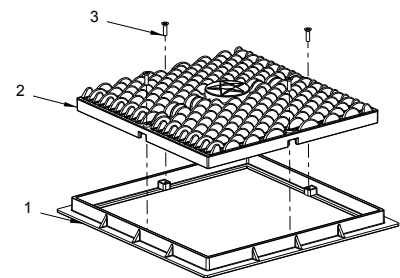
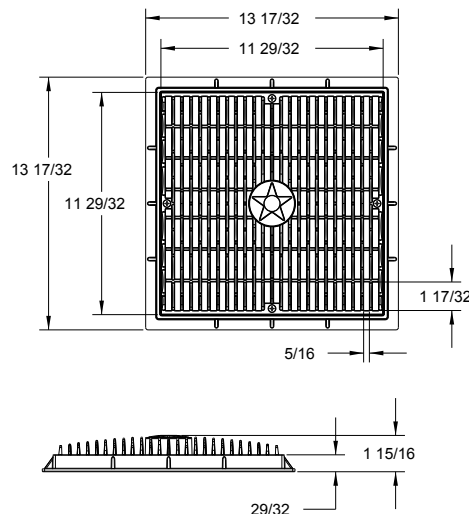
*Fits: AquaStar (p/n 12xxx, pre-VGB "flat"); Pentair (#1 selling) with 3/4" deep existing frames and four screw hole pattern

Part Numbers / Colors

- ☐ WAV12101 White
- ☐ WAV12102 Black
- ☐ WAV12103 Lt. Gray
- ☐ WAV12104 Blue
- ☐ WAV12105 Dk. Gray
- ☐ WAV12106 Bone
- ☐ WAV12107 Taupe
- ☐ WAV12108 Tan

Frame included

VGB 2008 Compliant



1. 12" x 12" flat square drain frame
2. 12" x 12" square wave drain
3. #10 flat head screw, ss, qty 4

ADDITIONAL PRODUCT CONFIGURATIONS FOR WAV12xxx

Features: Sump Buckets for WAV12xxx

For single or multiple drain use (see installation instructions)

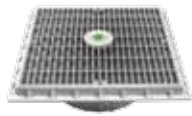
#316 stainless steel screws

Manufactured from superior UV-resistant engineered polymers

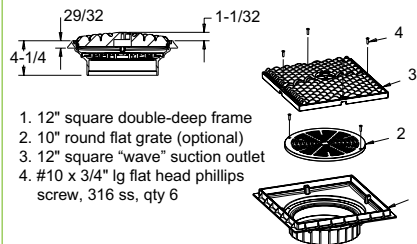
All components (cover, frame, screws) meet or exceed NSF 50/ASME/ANSI A112.19.8a-2008 national standards and ASTM G154 UV testing exposure

Sold with WAV12xxx, not sold separately

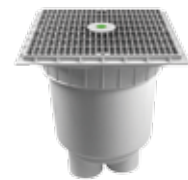
12" Square "Wave" Suction Outlet with 12" Square Double-Deep Sump



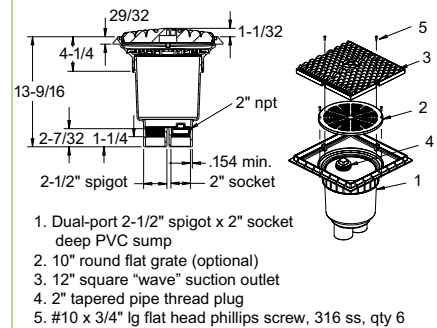
Part #
WAV12DDxxx
4 per case



12" Square "Wave" Suction Outlet with Dual-Port 2 1/2" Spigot x 2" Socket Deep PVC Sump



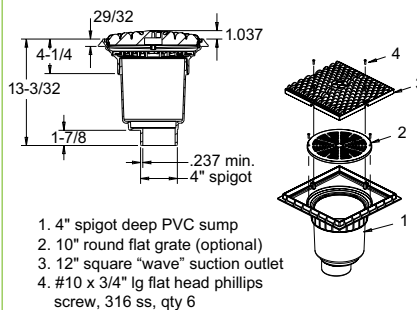
Part #
WAV12DDSBxxx
1 per case



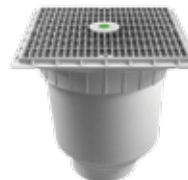
12" Square "Wave" Suction Outlet with 4" Spigot Deep PVC Sump



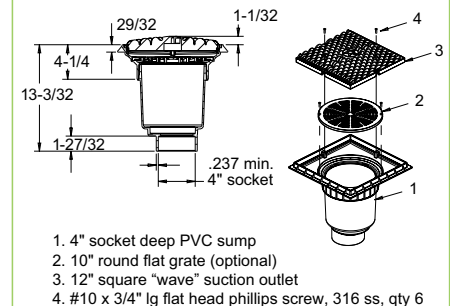
Part #
WAV12DDSB4SPxxx
1 per case



12" Square "Wave" Suction Outlet with 4" Socket Deep PVC Sump



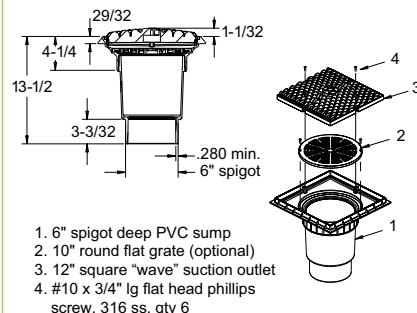
Part #
WAV12DDSB4SOCxxx
1 per case



12" Square "Wave" Suction Outlet with 6" Spigot Deep PVC Sump



Part #
WAV12DDSB6SPxxx
1 per case



12" Square "Wave" Suction Outlet with 6" Socket Deep PVC Sump



Part #
WAV12DDSB6SOCxxx
1 per case

