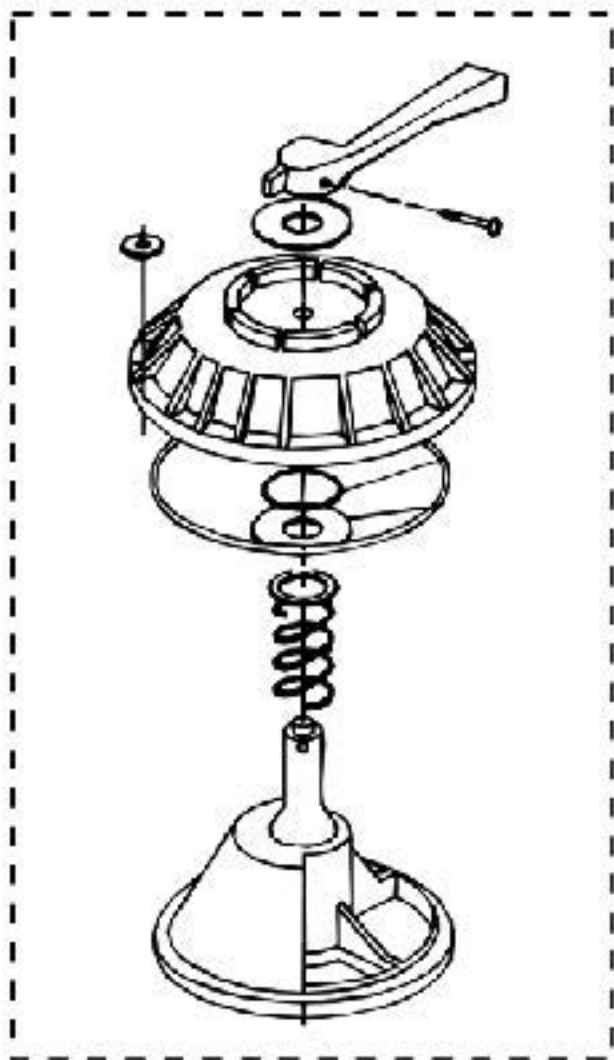


20



Sand Dollar Filter Systems Replacement Parts List Manufactured Prior to 2009

<u>Item No.</u>	<u>Part No.</u>	<u>Description</u>
1	262506	Valve 6-way assembly
2	711006	Adapter 1-1/2 in. hose, 2 req.
2	150046	Adapter w/chlorinator conn., 2 req.
3	711004	Clamp hose, 3 req.
4	154893	Hose 21-1/2 in. clear/grey spiral, SD 35
4	154894	Hose 26 in. clear/grey spiral, SD 40
4	154895	Hose 30 in. clear/grey spiral, SD 60
5	152165	Clamp Assembly - aboveground system ¹
6	152168	Screw #M6 x 1 pan head Phillips s/s, 2 req. ¹
8	152167	Nut #M6 s/s, 2 req. ¹
9	Dynamo	Pump
10	354265	Screw 1/4 in. - 18 hex washer head, 2 req. ²
11	155109	T-Nut 4 prong 5/16 in. - 18, req. ²
12	152901	Base assembly ²
13	154699	Drain Plug drain 1/4 in. NPT wing ⁵
14	192115	O-ring, drain plug (1/16 in. x 1/2 in. i.d.) ⁵
15	154710	Drain, Sand, 1 in., 5, ACME ⁵
15	150055	Drain kit ⁴
16	154713	Gasket, sand drain ³
17	155007	Lateral SD35, 8 req.
17	152290	Lateral SD40, SD60, 8 req.
17	150084	Lateral SD35, SD40 ⁴
17	150085	Lateral XLong, SD60 ³
18	155504	Piping (internal) assembly - SD35
18	155062	Piping Assembly (internal) assembly - SD40
18	155532	Piping (internal) assembly - SD60
19	145324	Tank w/internals SD35, almond
19	145327	Tank w/internals SD40, almond
19	145330	Tank w/internals SD60, almond
20	272531	HiFlow 1-1/2 in. top valve assembly

Not Shown

<u>Part No.</u>	<u>Description</u>
155151	Hose Kit, 1 1/2in.x6 ft. filter/pump to pool
155005	Hose Kit, 1 1/2 in. x 12 ft. filter/pump to pool
154712	Drain cap 1-1/2"
154715	O-ring for 1-1/2" drain cap
155167	Kit Bag Systems

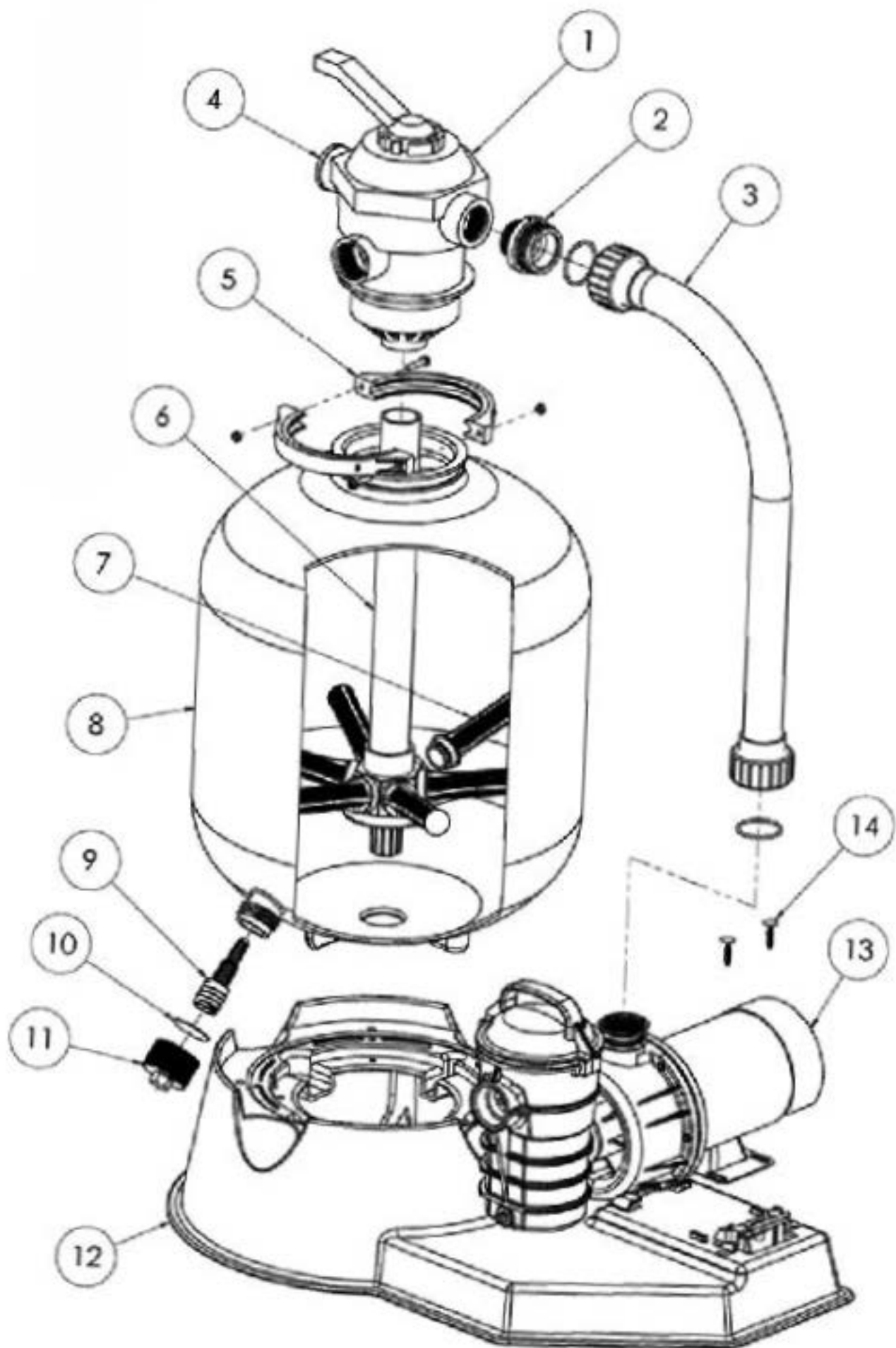
1: P/N 152165 (clamp assy.) consists of 2 each of the following: P/N 152166 (clamp half), P/N 152167 (nut) and P/N 152168 (screw).

2: P/N 152901 (aboveground base) consists of P/N 152900 (base) and 2 each of the following: P/N 155109 (T4 nuts) and P/N 354265 (screw).

3: P/N 192040 O-ring used on tanks manufactured after 1/1/03.

4: Manufactured after 10/04.

5: Manufactured before 10/04.



Sand Dollar Filter Systems Replacement Parts List Manufactured 2009 and Beyond

<u>Item No.</u>	<u>Part No.</u>	<u>Description</u>
1	262506	Valve 1-1/2 Inch, 6-Way
2	354588	Adaptor, NPT to Buttress
3	155709	Pump to Filter Assy (Dynamo to SD35)
3	155710	Pump to Filter Assembly (Dynamo to SD40)
3	155711	Pump to Filter Assembly (Dynamo to SD60)
4	190059	Pressure gauge
5	152165	Clamp Assembly
6	152229	Pipe assembly - SD35
6	152228	Pipe assembly - SD40
6	152227	Pipe assembly - SD60
7	150084	Lateral SD35 & SD40
7	150085	Lateral SD60
8	145339	Tank with drain SD35
8	145341	Tank with drain SD40
8	145343	Tank with drain SD60
9	154711	Sand Drain
10	154715	Gasket (Sand Drain)
11	154712	Drain cap
12	155333P	Systems Base
12	155333CP	Systems Base, CSA Pump
13	Dynamo	Pump
14	710009	Base Hardware Kit

Not Shown

Part No.	Description
155151	Kit, Flex Hose, 6ft. ¹
155005	Kit, Flex Hose, 12ft. ¹

1: Replacement Hose Kits include two (2) hoses, four (4) hose adaptors, and four (4) hose clamps